



# South Coast Air Quality Management District

## NOTICE OF PUBLIC MEETING TO DISCUSS HEALTH RISK ASSESSMENT FOR A FACILITY IN YOUR NEIGHBORHOOD

The following business in your neighborhood has been emitting toxic air pollutants that could potentially cause a risk to public health. Carpenter Co. (Carpenter) has been required to conduct a Health Risk Assessment (HRA) to evaluate how emissions are released and dispersed from Carpenter, and the potential impact those releases may have to public health.

Business Name	Location Address	Type of Business
Carpenter Co.	7809 Lincoln Avenue Riverside, CA 92504	Manufacturer of flexible polyurethane foam products

As the air pollution control agency for this area, South Coast Air Quality Management District (South Coast AQMD) will hold a public meeting to answer questions about the results of Carpenter’s 2019 Approved HRA. A representative for Carpenter will also attend the meeting. South Coast AQMD will hold the public meeting via video conferencing and by telephone. The audience will be able to participate during the public comment period.

Date & Time	Meeting Details
April 25, 2024 6:00 - 8:00 pm*	<p><b>INSTRUCTIONS FOR ELECTRONIC PARTICIPATION</b></p> <p>Join Zoom Webinar Meeting - from PC or Laptop  <a href="https://scagmd.zoom.us/j/92670382707">https://scagmd.zoom.us/j/92670382707</a>  <b>Zoom Webinar ID: 926 7038 2707</b> (applies to all)            Teleconference Dial In +1 669 900 6833            One tap mobile +16694449171,,926 7038 2707 #</p> <p>Audience will be allowed to participate during public comment periods.</p>

\*Please note that the meeting end time is dependent on public participation, therefore the meeting may end before 8:00 pm.

### INSTRUCTIONS FOR ELECTRONIC PARTICIPATION

#### Instructions for Participating in a Virtual Meeting as an Attendee

- As an attendee, you will have the opportunity to virtually raise your hand and provide public comment.
- Before joining the call, please silence your other communication devices such as your cell phone or desk phone. This will prevent any feedback or interruptions during the meeting.
- Please note that during the meeting, all participants will be placed on mute by the host. You will not be able to mute or unmute your lines manually.
- Speakers will be limited to a total of three (3) minutes for their opportunity to provide comments. This time may be reduced if there are a large number of commenters to ensure that all comments can be heard. A countdown timer will be displayed on the screen for each public comment.
- Once you raise your hand to provide public comment, your name will be added to the speaker list. Your name will be called when it is your turn to comment. The host will then unmute your line.

#### Directions for Video Zoom on a Desktop/Laptop/Smartphone

- If you would like to make a public comment, please click on the “Participants” button on the bottom of the screen.
- A list of participants will appear on the right side of the screen for computers and on a new screen for smartphones. At the bottom of the list, please click on the grey “Raise Hand” button.
- This will signal to the host that you would like to provide a public comment and you will be added to the list.
- Please Note: At the bottom of your screen, please click the “Interpretation” button and select the appropriate language.

#### Directions for Telephone Line Only

- If you would like to make a public comment, please dial \*9 on your keypad to signal that you would like to comment
- Please Note: There is no interpretation feature available when joining via telephone dial-in.





## Summary of Health Risk Assessment

The approved HRA, which used 2019 data, showed that toluene diisocyanate from Carpenter may cause an increased health risk for people who live and work in the area as seen in the attached Facility Risk Map ([Figure 1]).

The attached information sheet provides additional background on the business, air pollutants and health risks. The following table shows the estimated, potential health risks from the 2019 Approved HRA.

	<b>2019 Approved HRA</b>
Maximum chronic risk for any individual living near the facility	2.28 hazard index*
Maximum chronic risk for any individual working near the facility	1.92 hazard index*
Maximum non-cancer health effects from daily 8-hour exposures	3.19 hazard index*

\*A hazard index above 1.0 increases the probability of adverse human health effects.

For more information about South Coast AQMD programs to control toxic air pollution or the public meeting, please contact Victoria Moaveni of South Coast AQMD at (909) 396-2455 or [vmoaveni@aqmd.gov](mailto:vmoaveni@aqmd.gov). For more information about the facility, please contact Frank Vasicek at (951) 354-7550 or [frank.vasicek@carpenter.com](mailto:frank.vasicek@carpenter.com).

*Disability and language-related accommodations can be requested to allow participation in the Carpenter Rule 1402 public notification meeting. The agenda will be made available, upon request, in appropriate alternative formats to assist persons with a disability (Gov't Code Section 54954.2(a)). In addition, other documents may be requested in alternative formats and languages. Any disability or language-related accommodation must be requested as soon as practicable. Requests will be accommodated unless providing the accommodation would result in a fundamental alteration or undue burden to the District. Please contact the AB 2588 Hotline at (909) 396-3610 from 7:00 a.m. to 5:30 p.m., Tuesday through Friday, or send the request to [AB2588@aqmd.gov](mailto:AB2588@aqmd.gov).*





# South Coast Air Quality Management District

## 2019 Approved HRA Facility Risk Map (Figure 1)

Carpenter Co.

(South Coast AQMD ID No. 7730)  
Riverside, California

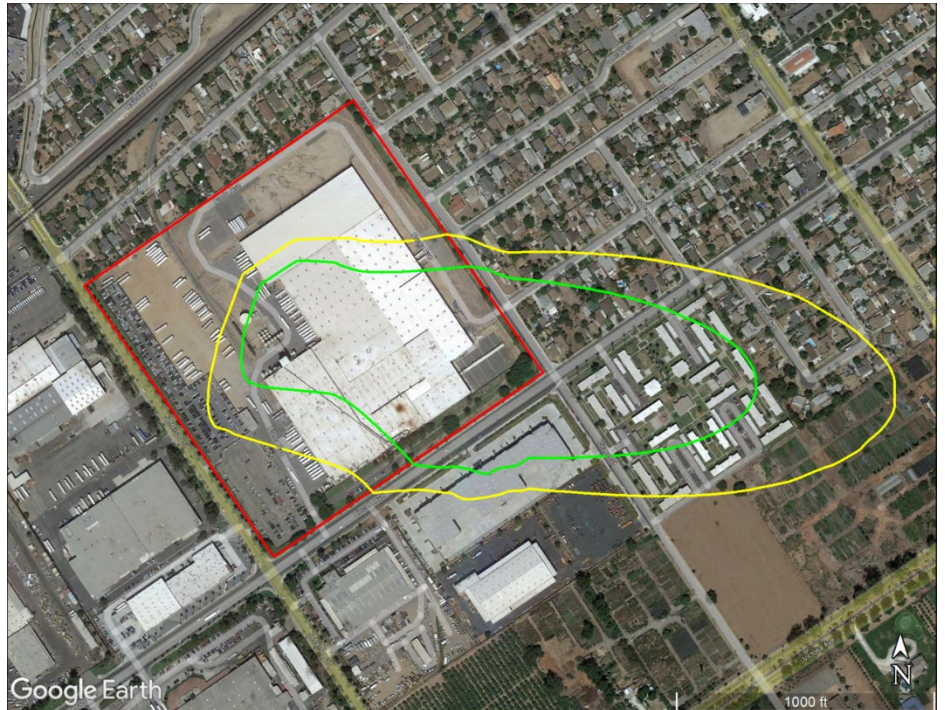
---

Public Notification Area Map

8-Hour Chronic Hazard Index of 1.0  
(Yellow Contour)

Chronic Hazard Index of 1.0  
(Green Contour)

Facility Boundary (Red Outline)



### Public Notification Required if:

- Maximum probability of cancer for those living closest to the facility is greater than 10 chances in-one-million
- Maximum probability of cancer for those working closest to the facility is greater than 10 chances in-one-million
- Long-term non-cancer health effects have a hazard index greater than 1.0 for those working and living closest to the facility
- Short-term non-cancer health effects have a hazard index greater than 1.0 for those who are near the facility





## INFORMATION SHEET

### What are toxic air pollutants?

Chemicals that can cause cancer and other adverse health effects such as harm to the human respiratory system are known as toxic substances. When these toxic substances are released in the air, they are called toxic air pollutants. Toxic air pollutants come from a variety of sources including chemical plants, large manufacturers, businesses and cars and trucks. Many products used at home, such as cleaners and paint thinners also contain toxic air pollutants.

### What toxic air pollutants does this facility emit?

Exposure to elevated concentrations of toluene diisocyanate can have potential cancer and non-cancer health risks. Long and short term health-based levels have been established by the California Office of Environmental Health Hazard Assessment (OEHHA).

The facility emits the following toxic air pollutants as a result of manufacturing flexible polyurethane foam products.

Pollutants	Possible Health Effects
Toluene Diisocyanate	Long term exposure can cause adverse effects to the respiratory system (such as asthma)

### How was the health risk from this facility determined?

The 2019 Approved HRA used estimated amounts of pollutants released from operations at Carpenter. That information is inputted into a computer-based model that evaluates air quality dispersion and predicts air pollution concentrations throughout the community. The results are then measured against exposure levels determined by OEHHA to predict potential impacts to people's health.

OEHHA updated their health effects guidance in March 2015 to specifically include new information that provides more insight on how toxic air pollutants can have a greater impact on children than they do on adults. This newer methodology led to stricter health standards, which in turn resulted in health risk estimates that are approximately three times more conservative than those using previous methods. This method of determining risk may differ from other regulatory programs, such as public notification being carried out under Proposition 65.

### What did the Health Risk Assessment find?

An HRA is currently the best method for estimating the amount of exposure to a chemical over a long period of time and the potential health impacts.

The 2019 Approved HRA for Carpenter was calculated using conservative exposure periods which assumed continuous exposure from the facility.

The 2019 Approved HRA, based on known information at the time, found that people who live in the area shown on the Facility Risk Map (Figure 1) would have a maximum chronic hazard index of 2.28. Those who work in the area would also experience a maximum 8-hour chronic hazard index of 3.19 and a maximum worker chronic hazard index of 1.92. The chronic risks are primarily due to toluene diisocyanate emissions from polyurethane foam manufacturing operations at the facility.

### What is being done to reduce the health risks from this facility?

South Coast AQMD Rule 1402 — Control of Toxic Air Contaminants from Existing Sources applies to facilities that exceed specific risk thresholds (e.g., cancer risk greater than 25 chances in-one-million) and requires the facility to submit a plan to reduce its risk below thresholds and implement this risk reduction plan within two and a half years after approval.

In this case, Carpenter is required to conduct both public notification and risk reduction. South Coast AQMD has also developed other programs designed to prevent pollution and reduce exposure to toxic air pollution, such as air toxic regulations specific to certain sources.

### What is the cancer risk from toxic air contaminants in general?

The Multiple Air Toxics Exposure Study V (MATES V) presents estimates of cancer risk throughout South Coast AQMD's four-county jurisdiction. The estimated risk for cancer from all toxic air contaminants emitted from all sources (cars, trucks, factories, power plants, etc.) is about 455 chances in-one-million.

### How can I get more information?

Table ES-2 of MATES V Executive Summary, available at: <http://www.aqmd.gov/docs/default-source/planning/mates-v/mates-v-final-report-9-24-21.pdf>

A copy of South Coast AQMD's approved health risk assessment for Carpenter is available online at:

<http://www.aqmd.gov/docs/default-source/planning/risk-assessment/carpenter-co/carpenter-hra-report.pdf>

