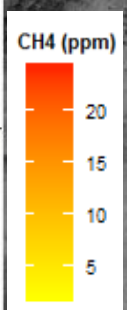


CH4 (ppm)

03/16/16 (09:00am to 10:05am)

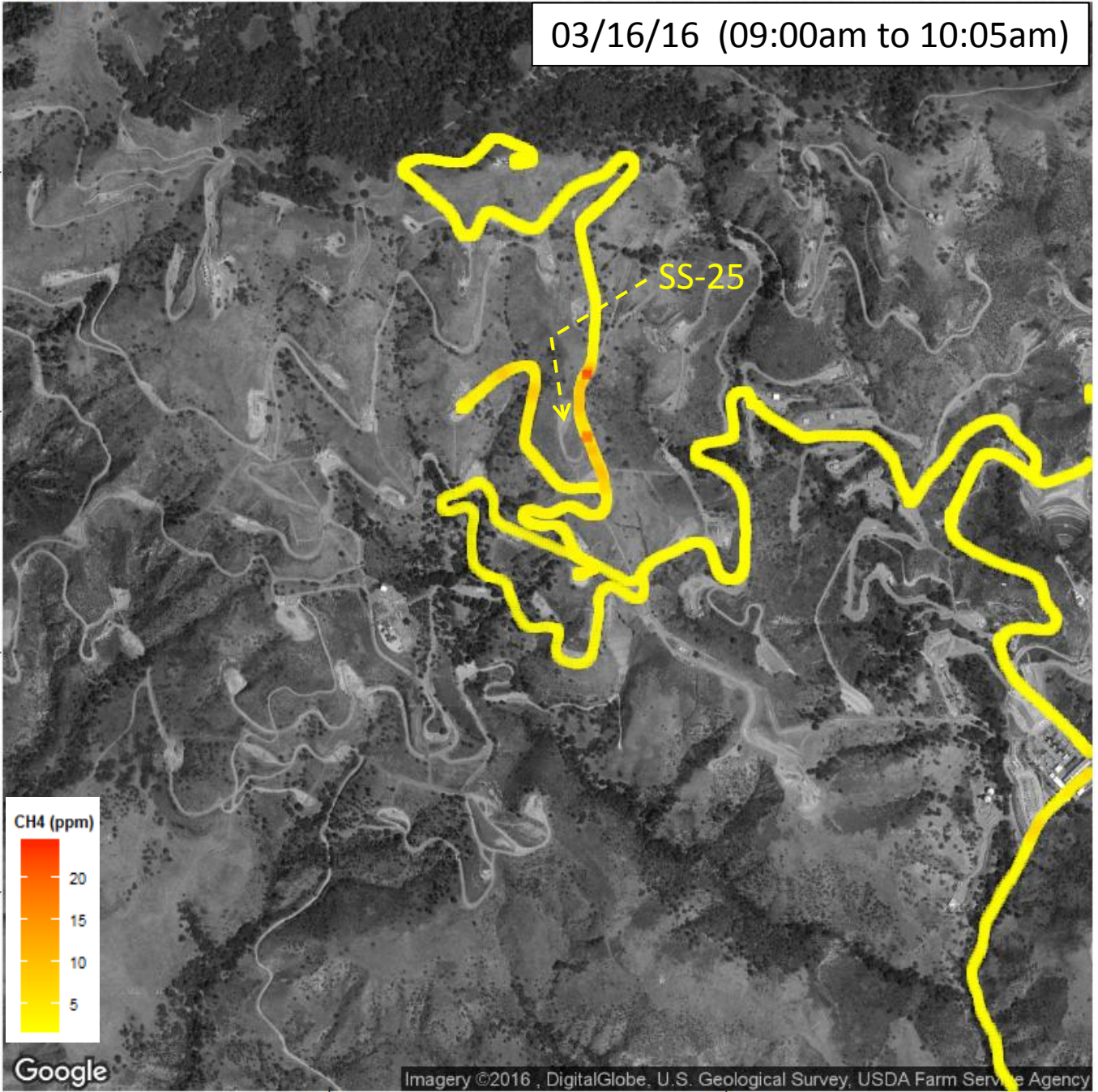
Latitude  
34.320  
34.315  
34.310  
34.305



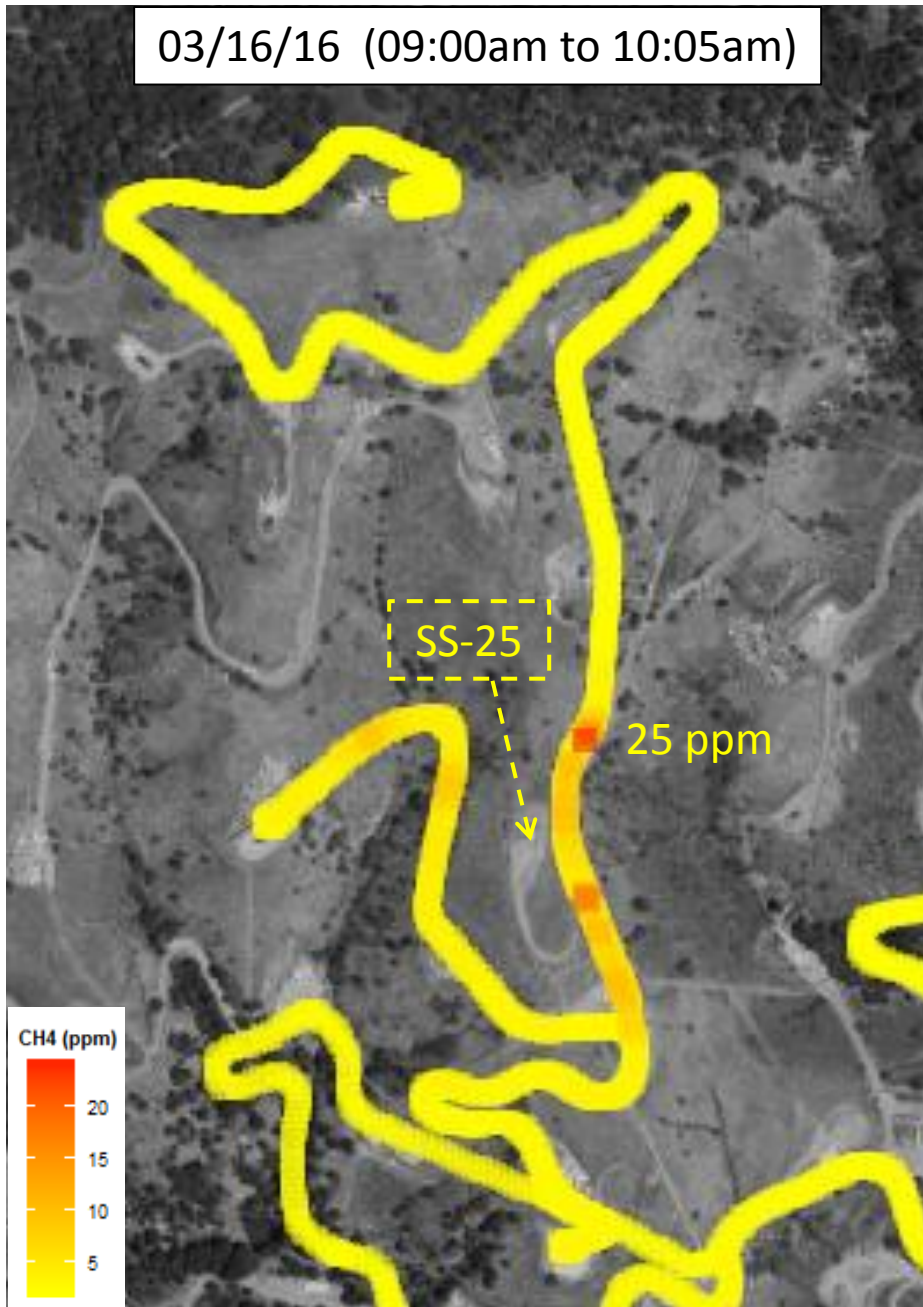
Google

Imagery ©2016 , DigitalGlobe, U.S. Geological Survey, USDA Farm Service Agency

Longitude  
-118.57 -118.56



03/16/16 (09:00am to 10:05am)



- Methane concentrations ~150-200 ft E of SS-25 are still elevated (up to 25 ppm)
- Methane levels immediately W and NW of well SS-25 have been decreasing but are still higher than background
- SCAQMD inspectors used a portable TVA-1000 monitor to confirm these findings and complement the LICOR data
- Videos were taken with FLIR cameras to identify the presence of natural gas