

During the FCCU start up process, SCAQMD's fixed site PM monitoring measurements were supplemented with mobile platform measurements. Two vehicles were outfitted with air monitoring equipment to measure continuous particulate matter (PM) and the capability to collect additional information (Figure 1). A GPS was also used to track the vehicles' locations at all time. Mobile platform measurements were conducted at the perimeter of the facility and in the adjacent communities in Torrance (Figure 2) starting before the FCCU startup on May 9, 2016 and extending to the mid- morning of May 10, 2016. Instantaneous PM levels were within typical ambient air PM levels with exception of a few times when the mobile platforms were downwind of direct vehicle exhaust and a brief period at about 1 am on May 10, 2016 east of the facility for which instantaneous readings of PM10 were elevated but not exceeding the levels of health based standards.

More detailed results of the mobile measurements will be provided in a future update.

Figure 1. SCAQMD mobile platform for Exxon Mobil FCCU startup monitoring



Figure 2. The area of focus for the mobile platform monitoring is depicted on the map in blue

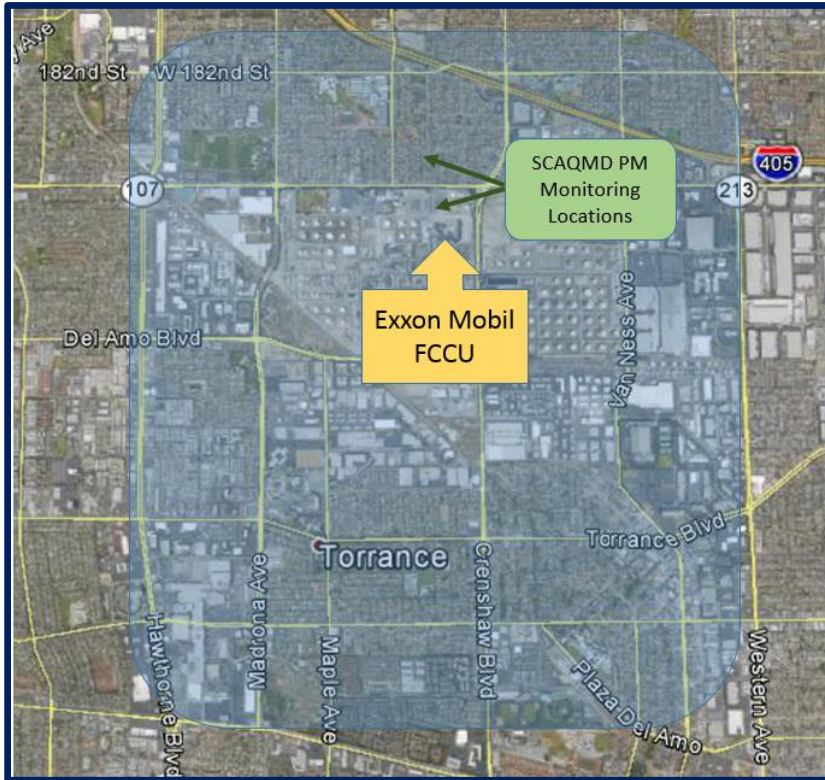


Figure 3. Mobile Platform collocation at the facility PM monitoring fixed site

