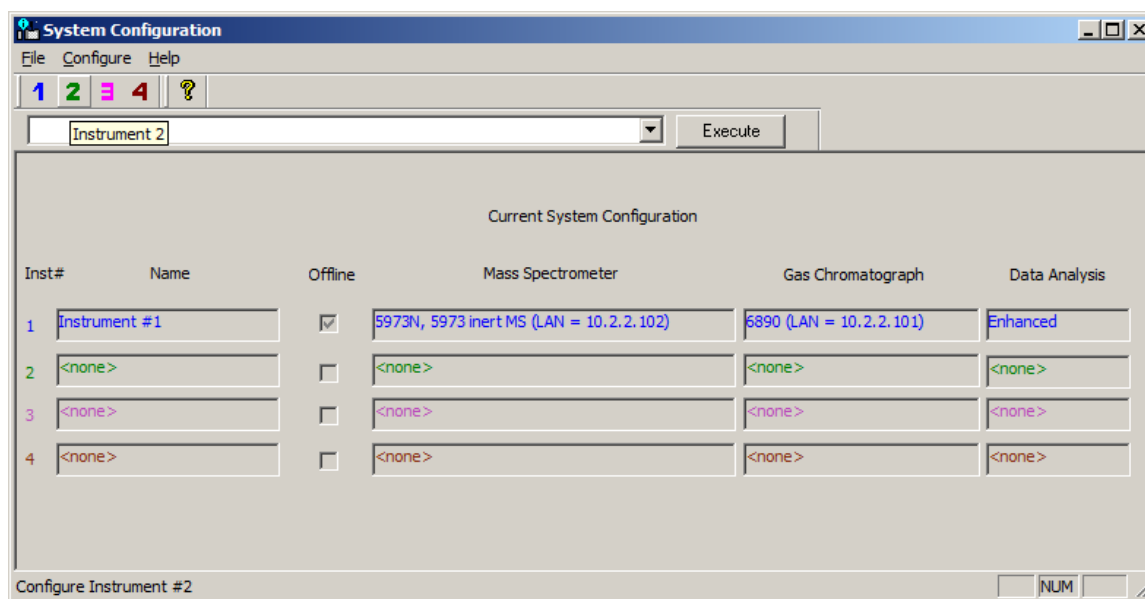


Before configuring MSD ChemStation, you must stop all analysis and close ChemStation.



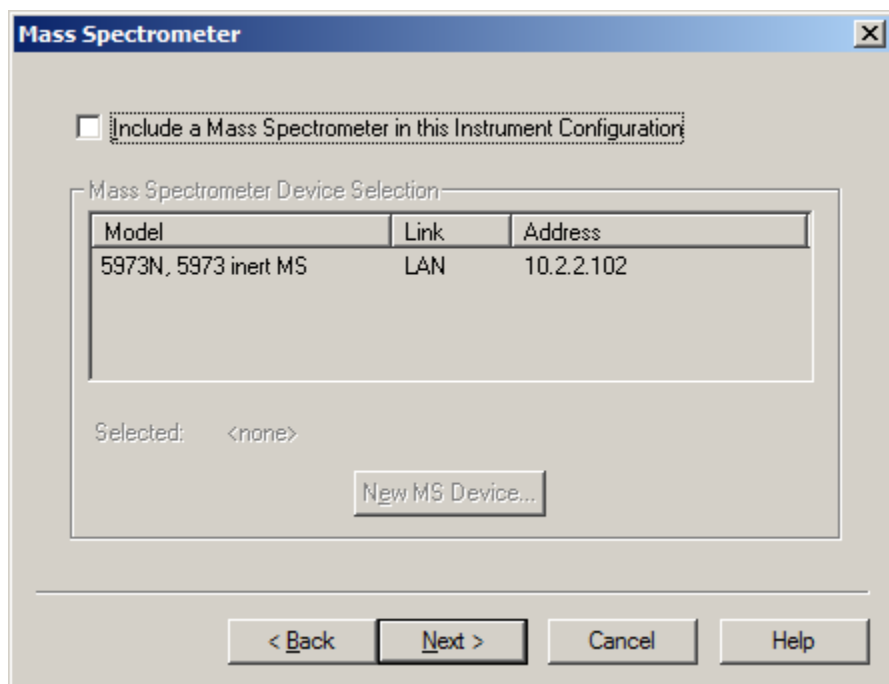
Highlight the MS Config icon and double-click the left-mouse button to run the MS Config program. If no MS Config icon is found on the desktop, you can run the **msconfig.exe** found at:

C:\msdchem\MSexe\msconfig.exe by highlighting **msconfig.exe** and double clicking left-mouse button. You should see a window similar to the one below appear.

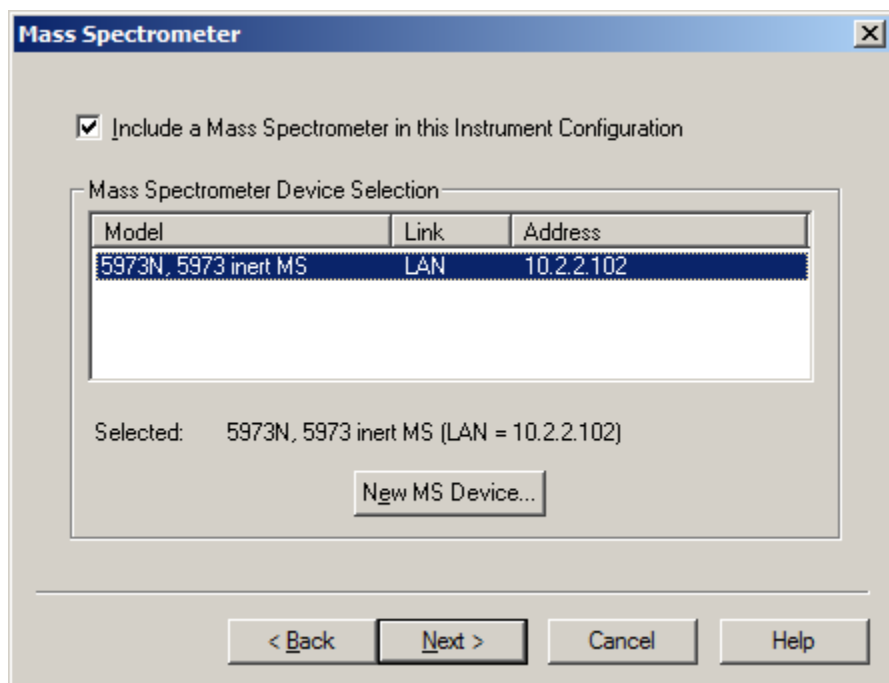


You should have instrument #1 configured if you are currently running your instrument under Enhanced Data Analysis for Online analysis and probably instrument #2 for Enhanced Data Analysis for Offline analysis. Since instrument #2 is available, our example will use instrument #2, but the same procedure applies to instrument #3, and #4.

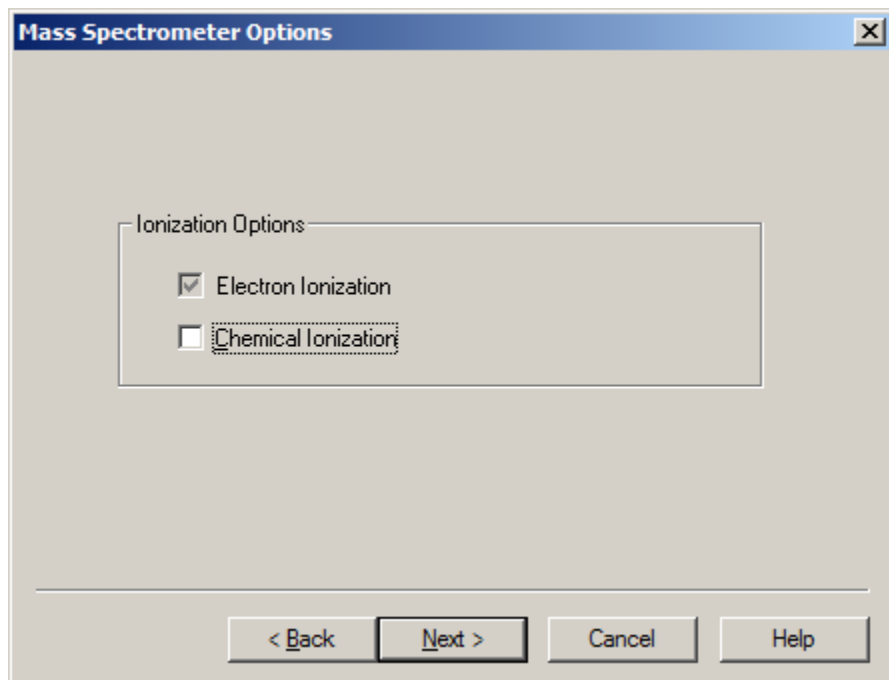
To install EnviroQuant Data Analysis, you must install on an available instrument which in this case its instrument #2. Install instrument by clicking on the **2** on the menu bar of the window. Once you click on the 2 on the menu bar, you should see a window similar to the one below appear.



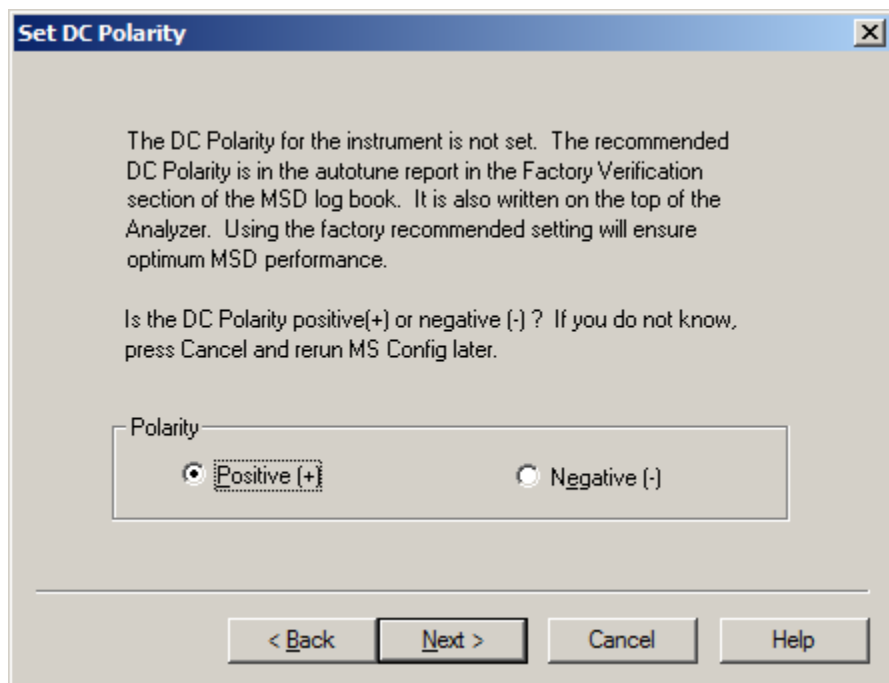
Click on the **Include a Mass Spectrometer in this Instrument Configuration** check-box, select the instrument found in the **Mass Spectrometer Device Selection** box, and click on the **Next >** button.



You should see a window similar to the one below appear.

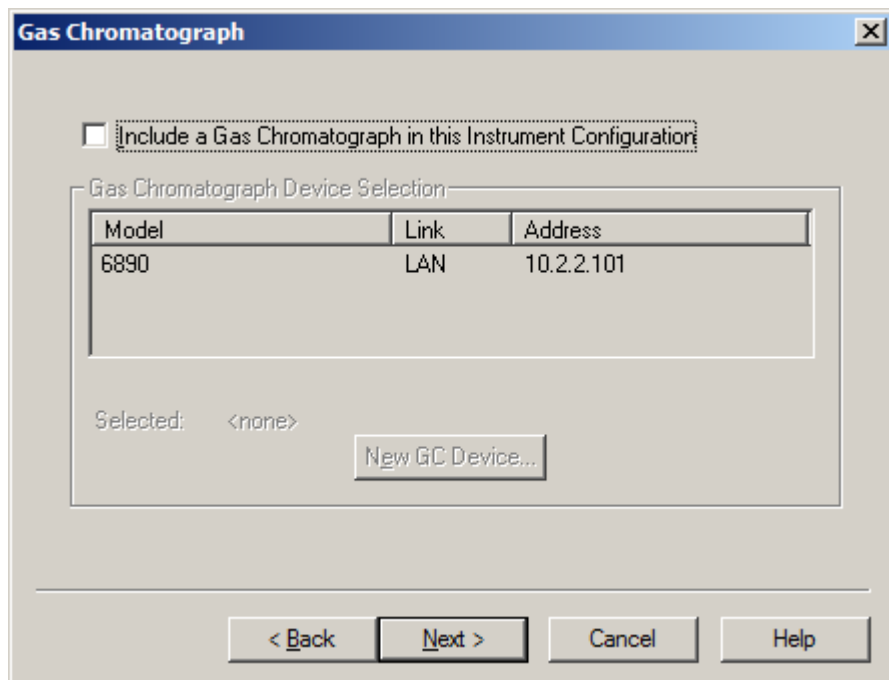


Check box for Electron Ionization should be checked and grayed out, so just click on the **Next >** button. A windows similar to the one below should appear.

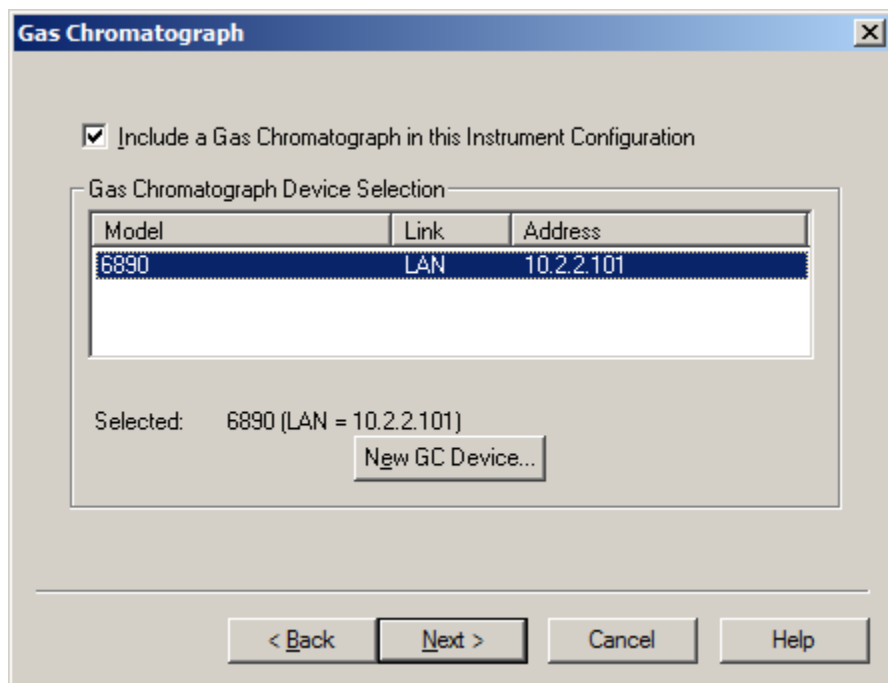


Make sure that the Positive (+) Polarity button is selected and press the **Next >** button.

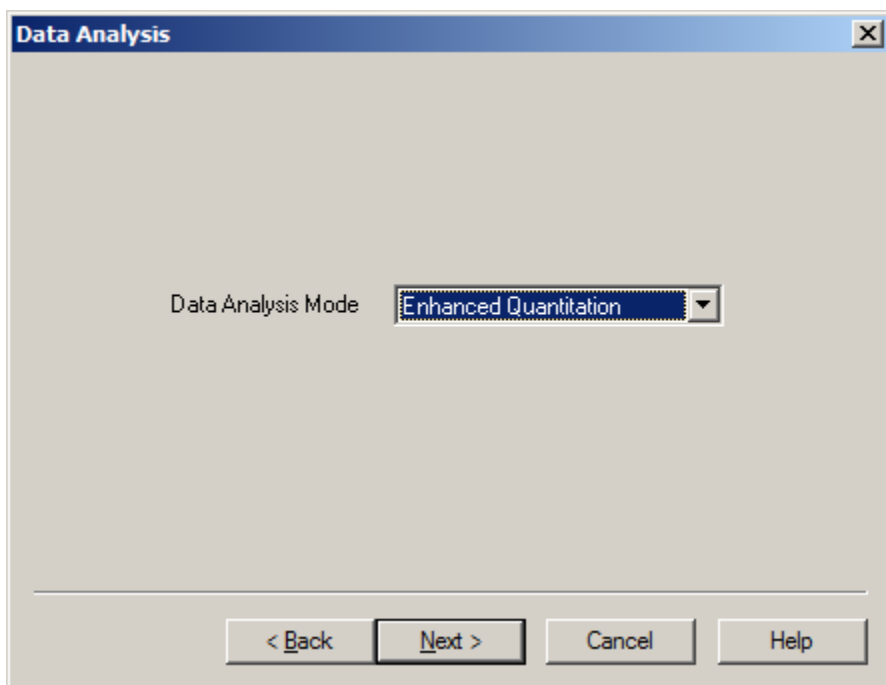
A window similar to one below should appear.



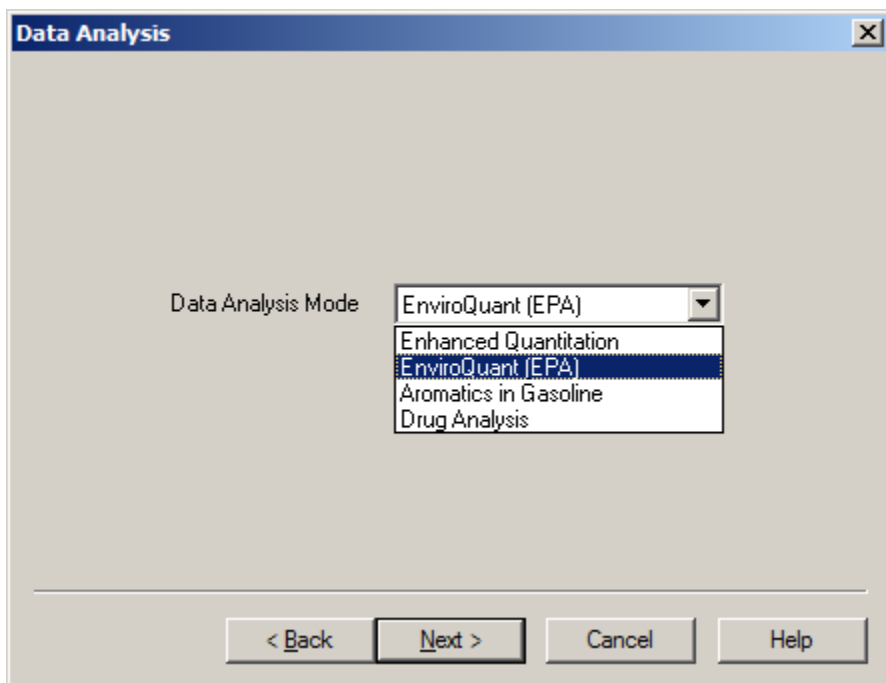
Click on the Include a **Gas Chromatograph in this Instrument Configuration**, select the instrument found in the **Gas Chromatograph Device Selection** box, and click on the **Next >** button.



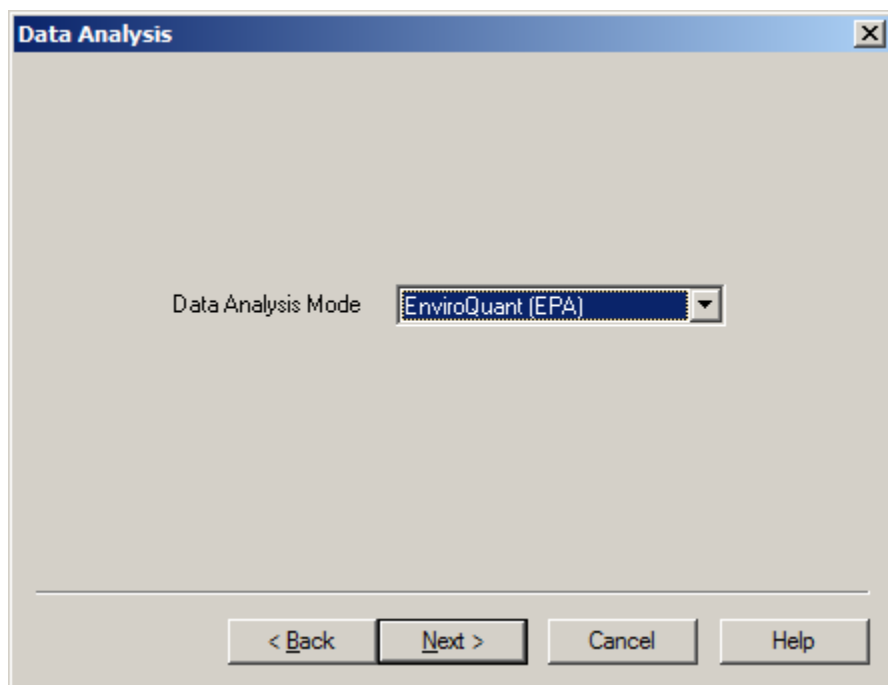
A window similar to one below should appear with the **Data Analysis Mode** having **Enhanced Quantitation** highlighted in the drop-down menu.



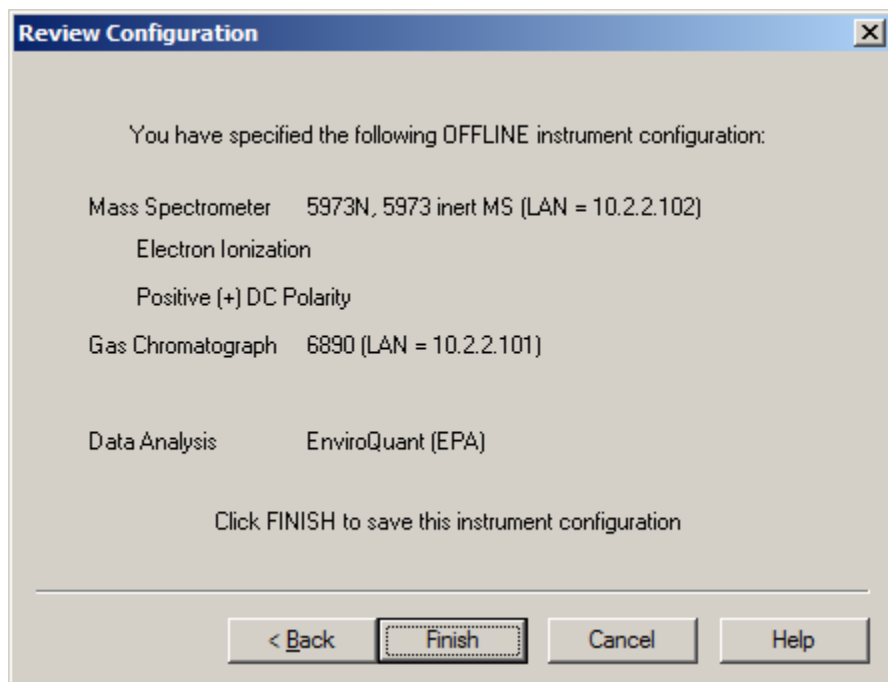
Click on the down arrow and select **EnviroQuant (EPA)** to install the EnviroQuant Software.



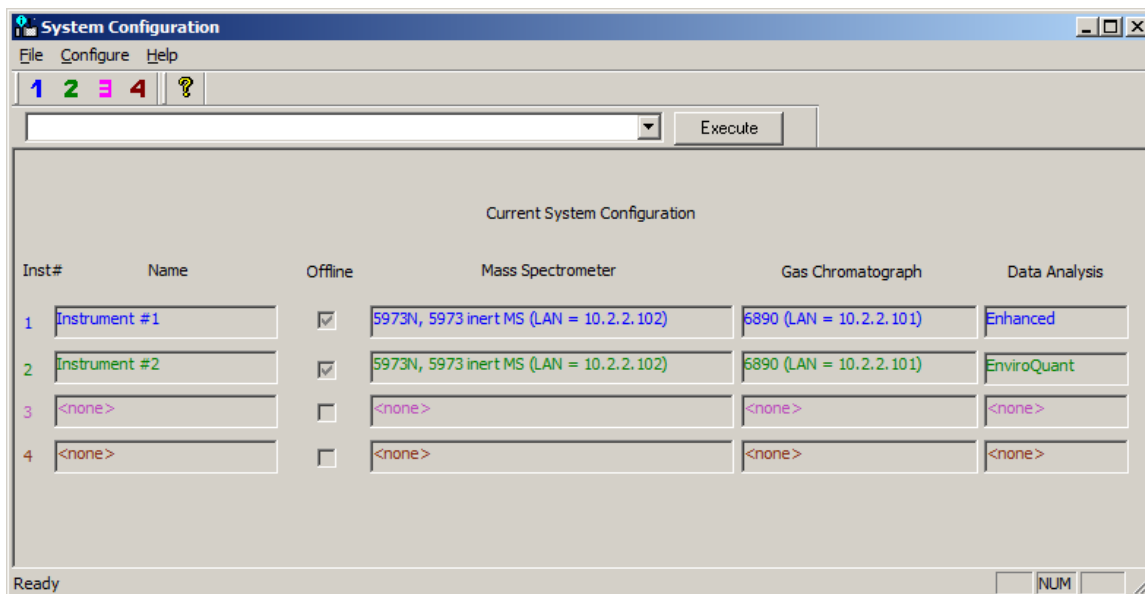
A window similar to one below should be on your screen now. Press the **Next >** button to continue with the installation of the ChemStation EnviroQuant Software.



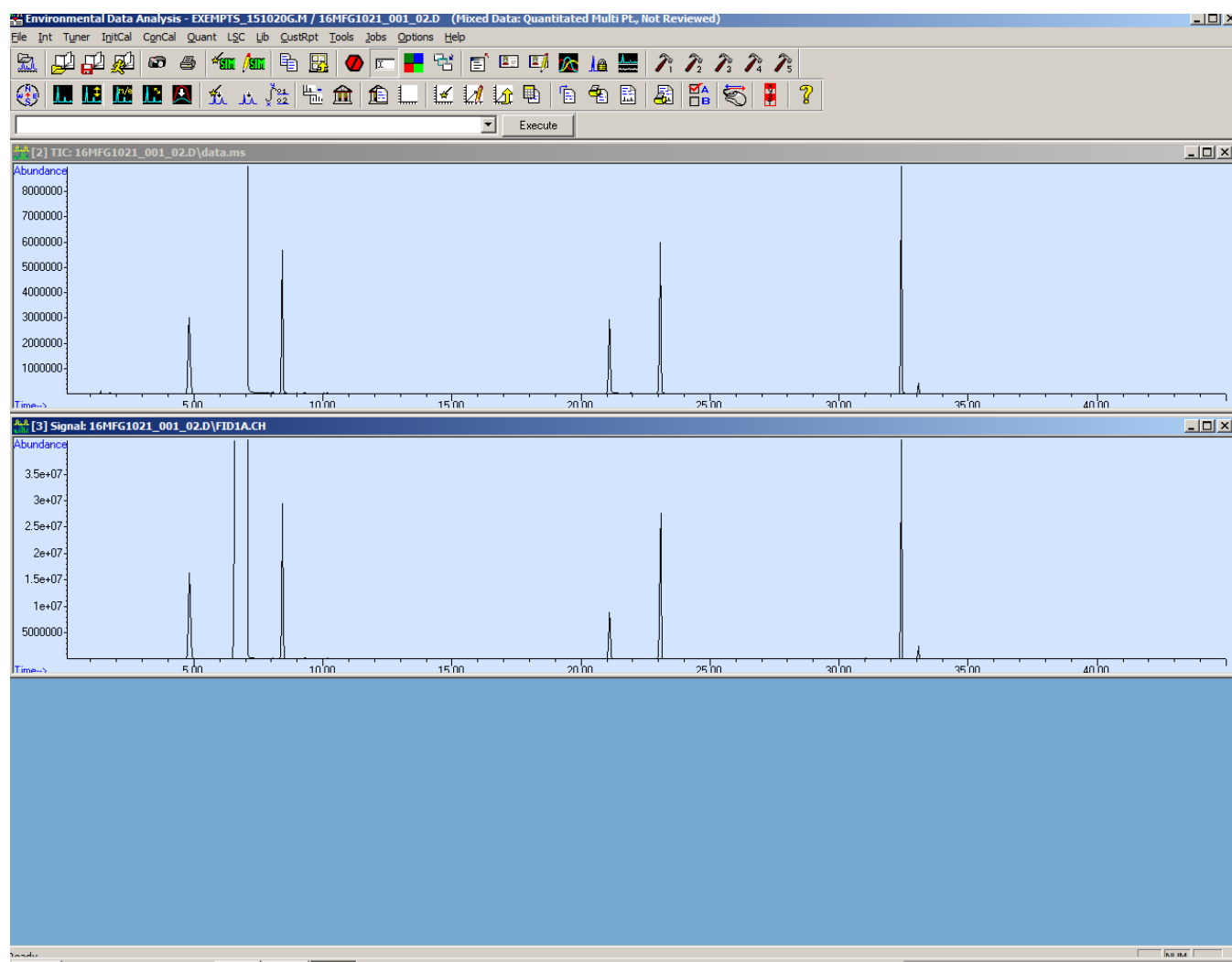
A windows similar to one below should appear. Click on the Finish button to install the EnviroQuant Software.



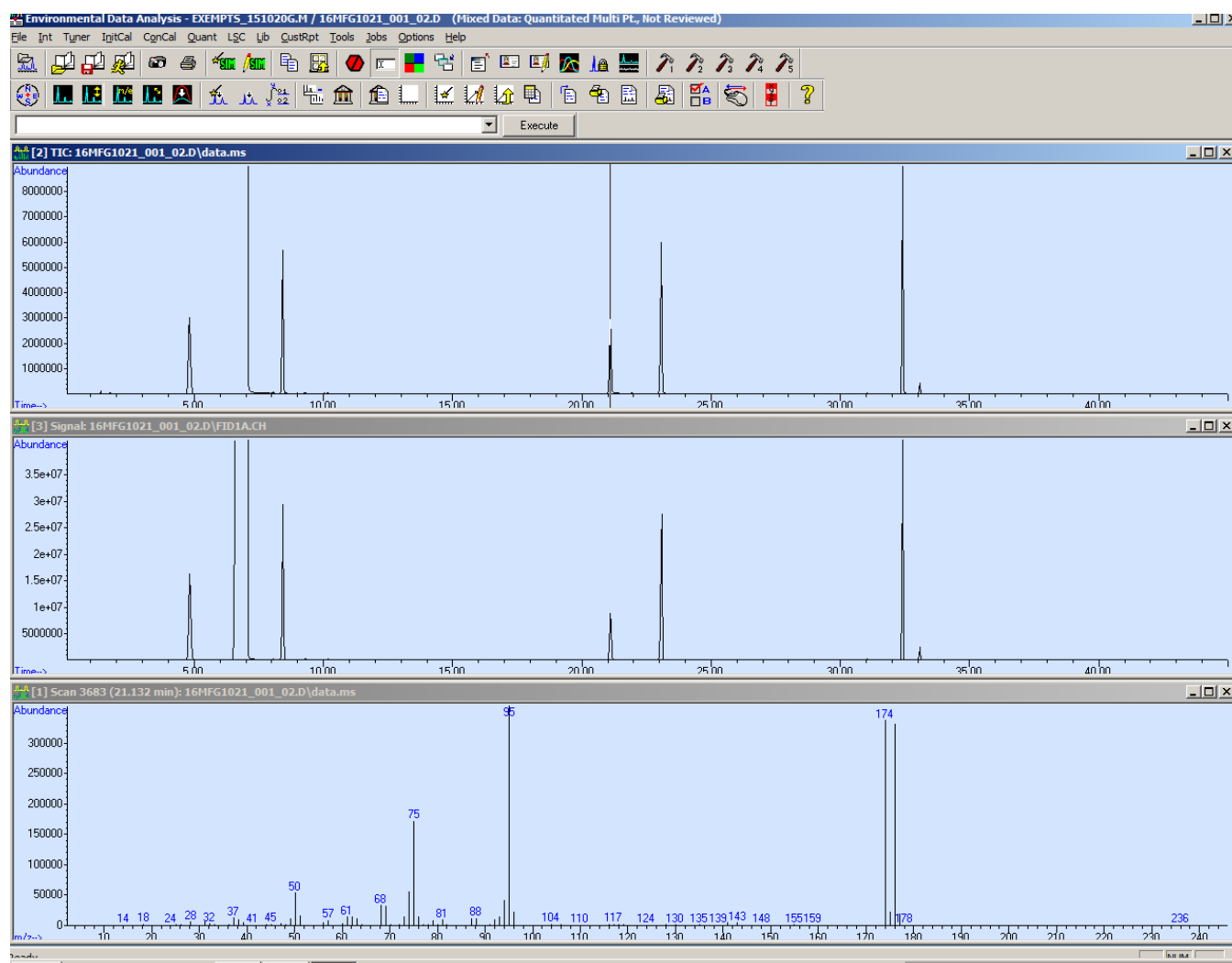
The configuration window similar to the one below should appear with the #2 instrument being the offline instrument and the **Data Analysis** being **EnviroQuant**. You should also see the appearance of EnviroQuant Data Analysis icon on the desktop.



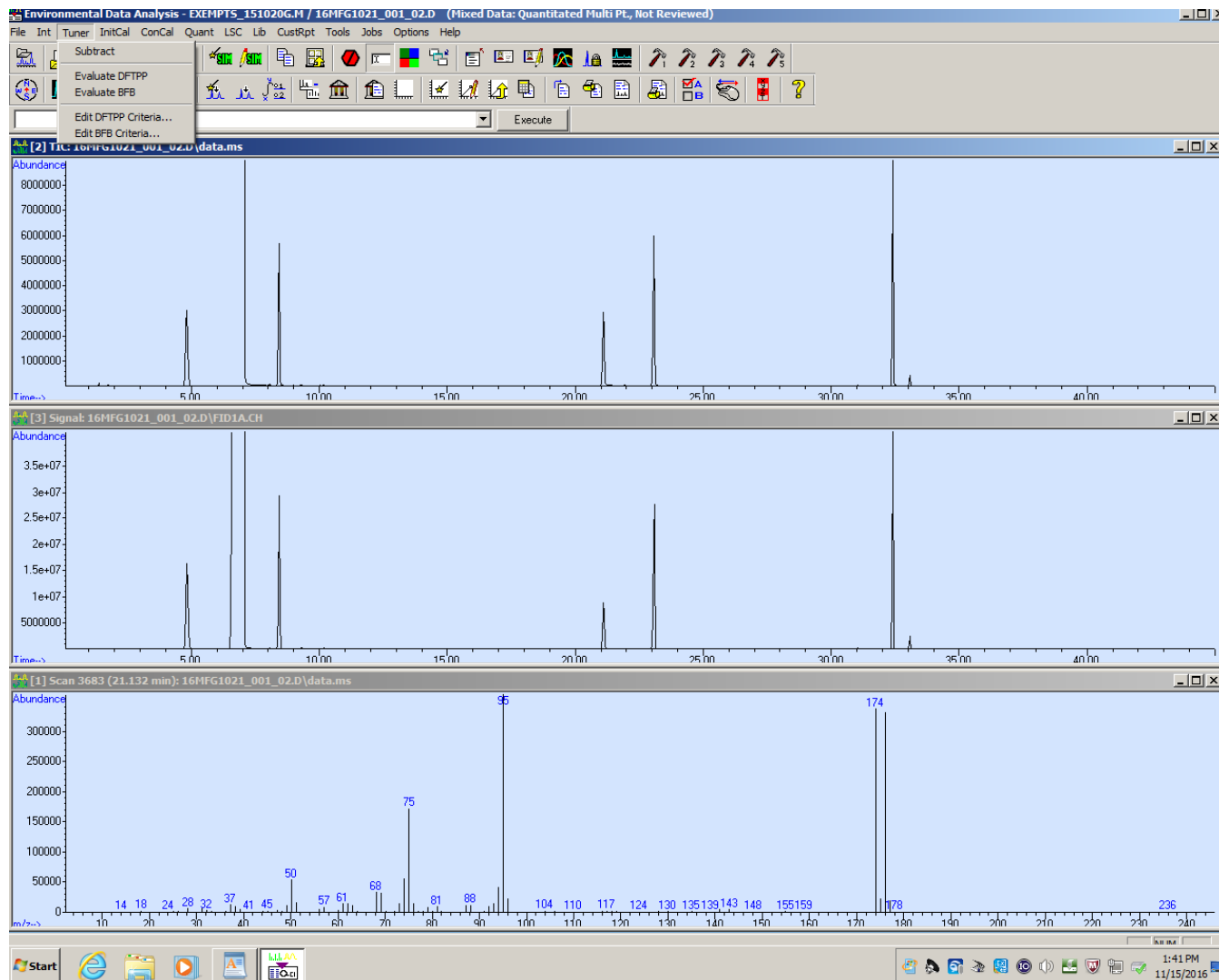
In order to obtain a BFB report you must open the recently installed EnviroQuant software by double-clicking on the EnviroQuant Data Analysis Icon found on your desktop. A window similar to the one below should appear.



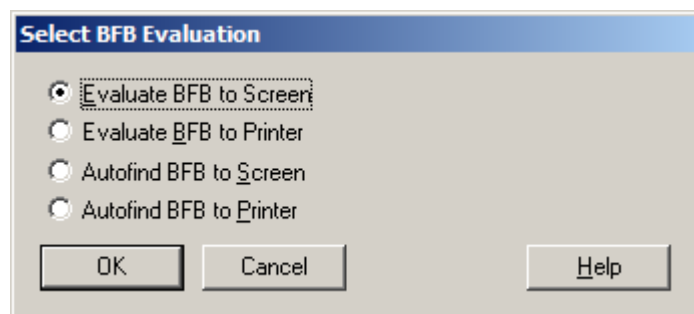
Left mouse click on the BFB peak on the TIC chromatograph to obtain the MS spectra of BFB. A spectra similar to one below should appear.



To obtain BFB report click on the **Tuner Menu** option and select the **Evaluate BFB** report option.



A Pop-Up window should appear similar to the one below:



Select the desired Radio-Button report option and click on the **OK** button.

The desired report option will then printout similar to the one below.

BFB

Data Path : H:\COMPLIANCE\0_INSTRUMENT RAW DATA\MFG\2016 MFG\16MFG1021_001\
Data File : 16MFG1021_001_02.D
Acq On : 21 Oct 2016 6:42 pm
Operator : AB
Sample : IOM BFB
Misc : MFG-156-039 (Sig #1); (Sig #2)
ALS Vial : 11 Sample Multiplier: 1

Integration File signal 1: ExemptsMS.e
Integration File signal 2: Exempts.e

Method : C:\msdchem\1\methods\EXEMPTS_151020G.M
Title : SCAQMD M313
Last Update : Wed Oct 28 16:32:30 2015

Spectrum Information: Scan 3683

Target Mass	Rel. to Mass	Lower Limit%	Upper Limit%	Rel. Abn%	Raw Abn	Result Pass/Fail
50	95	8	40	14.9	53696	PASS
75	95	30	66	47.4	171136	PASS
95	95	100	100	100.0	361088	PASS
96	95	5	9	6.1	21888	PASS
173	174	0.00	2	0.0	0	PASS
174	95	50	120	93.4	337280	PASS
175	174	4	9	6.4	21600	PASS
176	174	93	101	98.3	331520	PASS
177	176	5	9	5.5	18320	PASS

EXEMPTS 151020G.M Tue Nov 15 13:44:58 2016

