



# PAR1113 WORKING GROUP MEETING

February 19, 2015



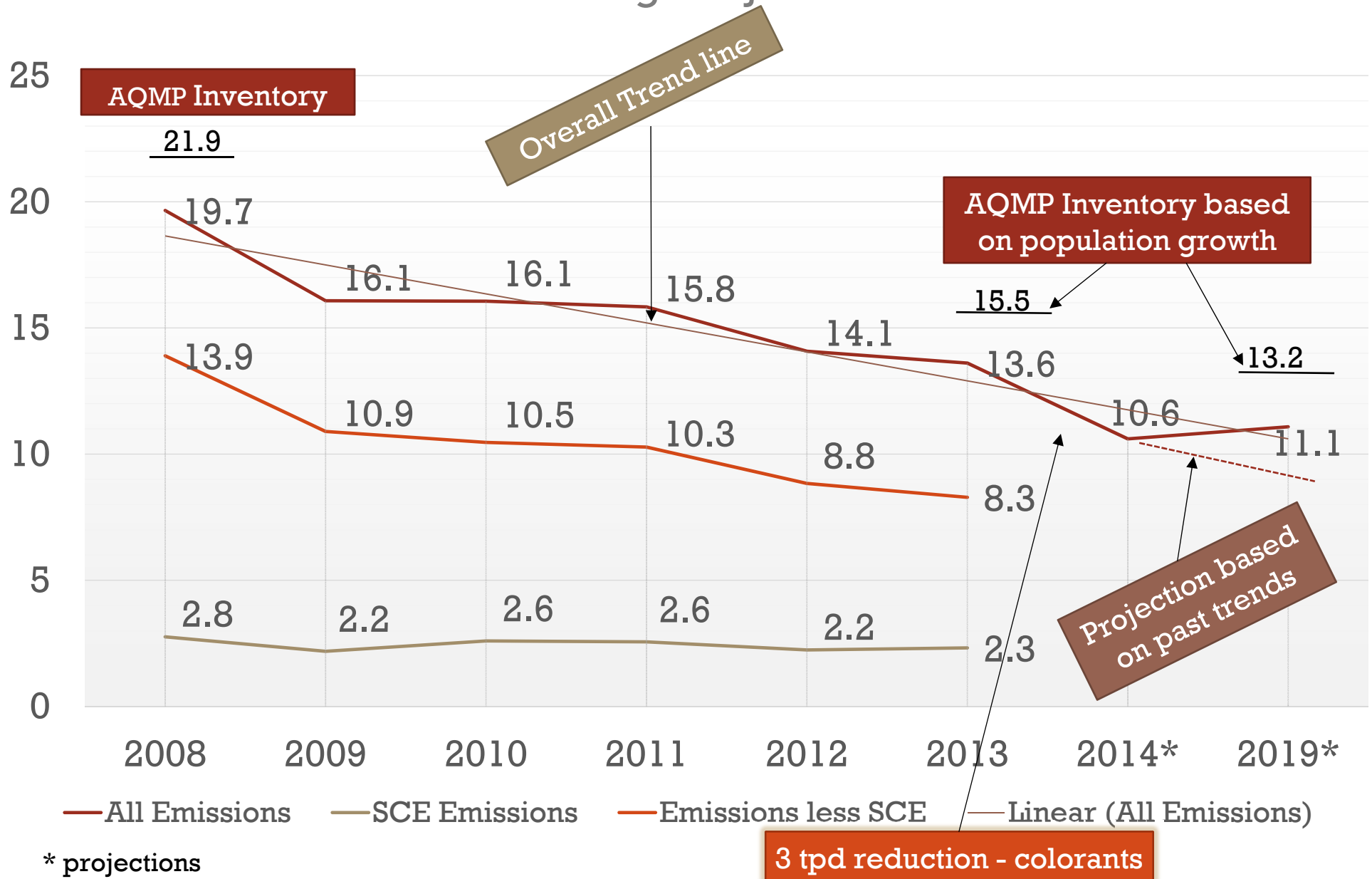
# OVERVIEW

- 2012 AQMP CTS-01 includes 2-4 tpd VOC reductions
  - Alternative fee structure - *in lieu of 25 g/L VOC limit flats, non-flats, PSU*
  - *Restrictions on Small Container Exemption*
  - *Transfer Efficiency – proposing a non-regulatory approach*
- *Rule Cleanup*



# CREDIT FOR CURRENT INVENTORY

# Rule 314 Emissions Summary (tons/day) Including Projections



Year	Architectural Coatings VOC Inventory (tpd)			314 Data <sup>3</sup>
	2003 AQMP <sup>1</sup>	2007 AQMP <sup>1</sup>	2012 AQMP <sup>2</sup>	
1995	50.27			
1997	50.96			
2000	49.84			
2002	43.39	48.58	-	
2003	38.62			
2005	38.36	38.79	-	
2006	32.67			
2007	26.84			
2008	25.35	22.65	21.91	19.7
2010	24.08 <i>7.2 reduction</i> 16.8	23.13	-	16.1
2011		23.4	-	15.8
2012			-	14.1
2013			-	13.6
2014		24.19	15.46	10.6
2015		25.63		
2017		-	16.17	
2019			<i>2 - 4 reduction</i>	
2020	26.87	25.81		
2023		26.55	16.71	
2030		28.25	17.58	

Includes 4.4 tpd reduction from 2011 amendment + 2 tpd reduction from CTS-01.

2014 is projected based on the 3 tpd reduction from colorant limit.

1. Based on CARB survey data, colorants not included
2. Based on Rule 314 data with 3 tpd added for colorant and a small amount from clean up solvent
3. Includes 3 tpd for colorant until January 1, 2014

# **RULE 314 — AMENDED FEE STRUCTURE**

# INITIAL CONCEPT

- Fee structure to further encourage sales of low-VOC products
- Revenue neutral
- Example\*

Current Fee Rate for all Coatings

VOC of Coating (g/L)	Sales Fee (per gallon)	Emission Fee (per ton)
<10**	\$ 0	\$ 0
10 - 24.99	\$ 0.009	\$ 260.54
<b>25 - 49.99</b>	<b>\$ 0.039</b>	<b>\$ 260.54</b>
50 - 99.99	\$ 0.049	\$ 260.54
100 - 274.99	\$ 0.059	\$ 260.54
>275	\$ 0.39	\$ 260.54

\*\* Approximate current  $\leq 5$  g/L VOC of material exemption

\* For discussion purposes only

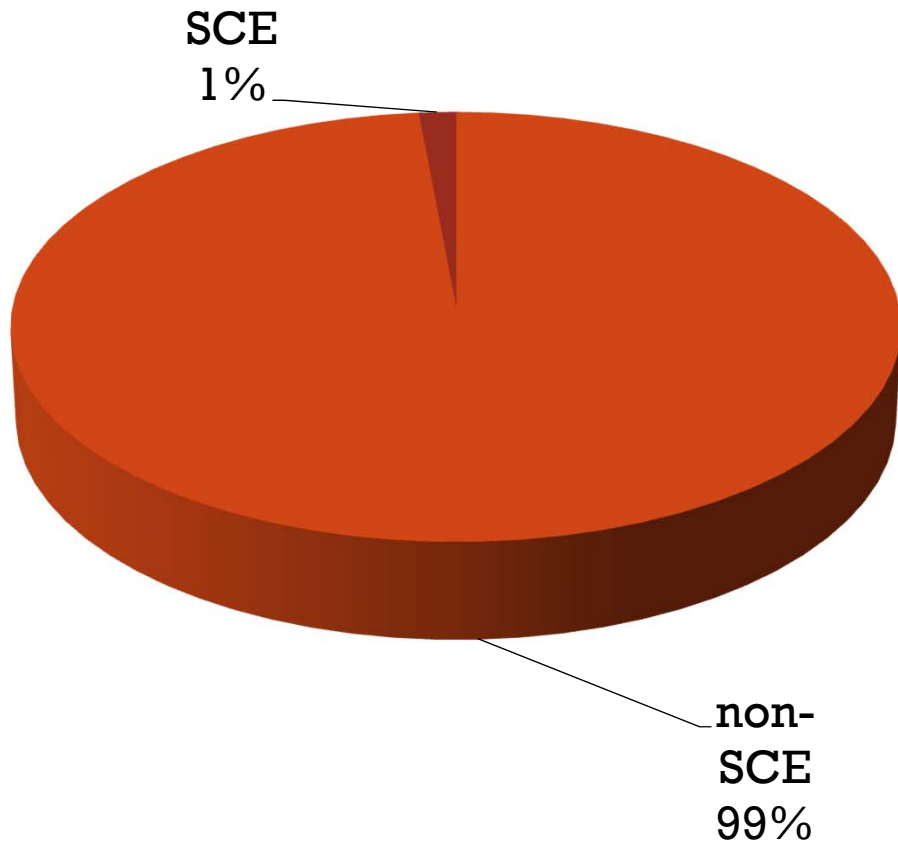
# **SMALL CONTAINER EXEMPTION (SCE)**

Coating sold in one-liter or smaller containers above the VOC limit

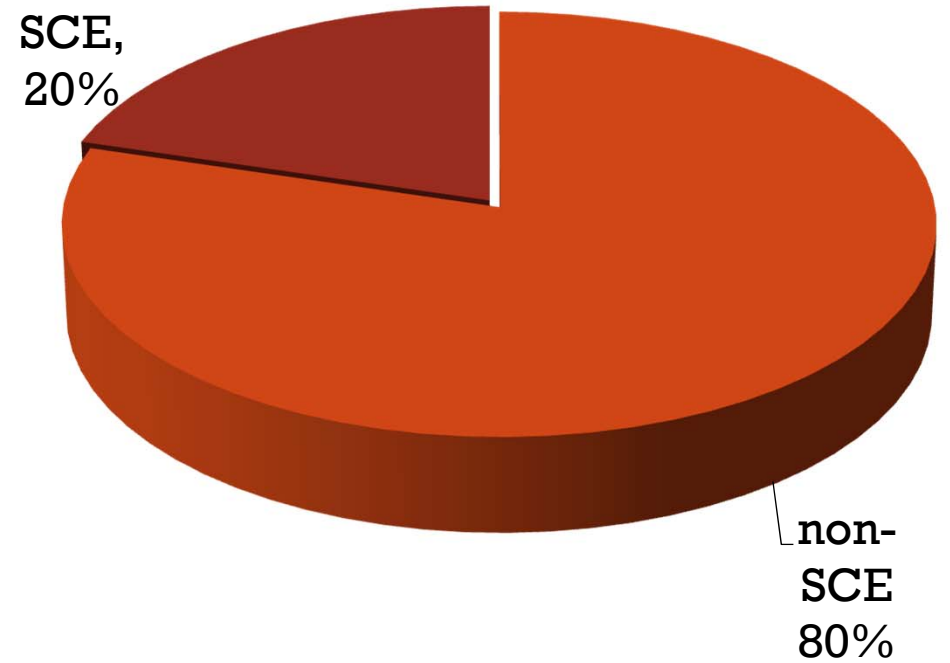


# SCE VERSUS NON-SCE

## Sales



## Emissions



# SCE RESTRICTION

- Phase out the SCE, effective January 1, 2018 for:
  - Flat Coatings (0.01 tpd)
  - Non-Flat Coatings (0.25 tpd)
  - Industrial Maintenance Coatings (0.01 tpd)\*
  - Rust Preventative Coatings (0.74 tpd)
- Total Reduction: 1 tpd

\* Prevent rule circumvention – re-categorizing RPCs and IMCs.

# OTHER CONCEPTS

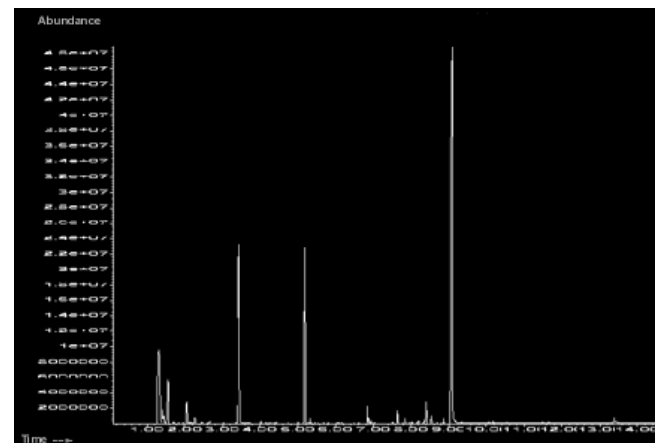
# TRANSFER EFFICIENCY



- Collaborate with manufacturer/ contractors to improve transfer efficiency
  - Establish a training program for contractors
  - Work with retailers who offer rental equipment
    - Phase out older, less efficient guns/tips
    - Offer the laser system to assist DIY end user
- **Spray Gun Manufacturers – Air Assist versus Airless Guns**
  - Assess product usage
  - Consider labor (including surface prep) and cost of paint
  - On site review and assessment
- Explore a potential SCAQMD incentive program (e.g. provide free gun tips, laser guidance system and/or discounted guns to enhance transfer efficiency)

# VOC TEST METHODOLOGY

- Include SCAQMD Laboratory Method 313
- **Need industry support to further analyze exclusion principle**
- Considering Cal Poly approach:
  - Neat Compounds evaluation (analyte + MP in pan or TGA with M24 parameter)
  - Spike a near-Zero VOC coating



## Architectural Coating Product Search

Manufacturer Name :

- VEXCON CHEMICALS INC./POLYSAT INC.
- VISIONS PAINT RECYCLING INC
- VISTA PAINT CORP
- W R GRACE & CO CONN, CONSTRUCTION PROD  
DV
- W R MEADOWS INC

Brand Name :

Product Name :

Coating Category :  
Flats

Regulatory VOC (g/L) :  
From  To

### Product Summary (Click the column header to sort)

Total: 78

Items per Page: [25](#) | [100](#) | [200](#) | [500](#)

<a href="#">Manufacturer</a>	<a href="#">Product Code</a>	<a href="#">Category</a>	<a href="#">Brand</a>	<a href="#">Product Name</a>	<a href="#">Type (1)</a>	<a href="#">Use (2)</a>	<a href="#">VOC Limit (g/L)</a>	<a href="#">VOC (g/L)</a>	<a href="#">Low Solids</a>	<a href="#">SCE (3)</a>
VISTA PAINT CORP	.013	Flats	Vista	ACOUSTIC KOTE WHITE	WB	I	50	33		
VISTA PAINT CORP	.1000	Flats	Vista	DURAGLIDE FLAT P BASE FACTORY TINT	WB	D	50	47		
VISTA PAINT CORP	.1023	Flats	Vista	DURAGLIDE FLAT SWISS COFFEE	WB	D	50	47		
VISTA PAINT CORP	.1032	Flats	Vista	DURAGLIDE FLAT SHELL WHITE	WB	D	50	47		
VISTA PAINT CORP	.1037	Flats	Vista	DURAGLIDE FLAT WHITE SHADOW	WB	D	50	47		

# DEFINITIONS

**GLAZES, which are coatings designed for:**

(A) Wet-in-wet techniques, where a wet coating is applied over another wet coating used to create artistic effects, including simulated marble or wood grain, or

(B) Subtractive techniques, where a wet coating is applied over specially prepared pre-painted substrates or base coats and subsequently treated with various tools, such as a brush, rag or sponge, during the drying period to create effects such as ~~but not limited to~~ dirt, old age, smoke damage, simulated marble and wood grain finishes, decorative patterns, or color blending, ~~and wet edge techniques.~~



**BUILDING ENVELOPE COATINGS** are coatings labeled and formulated to provide air barrier materials which have an air permeance not to exceed 0.004 cubic feet per minute per square foot under a pressure differential of 1.57 pounds per square foot (0.004 cfm/ft<sup>2</sup> @ 1.57 psf), [0.02 liters per square meter per second under a pressure differential of 75 Pa (0.02 L/(s•m<sup>2</sup>) @ 75 Pa)] when tested in accordance with ASTM E2178; and/or a coating labeled and formulated to resist liquid water that has penetrated a cladding system. Water resistance shall be tested in accordance with ASTM E331. Water vapor permeance shall be tested in accordance with ASTM E96/E96M-10. **Building Envelope Coatings which form continuous films are regulated under Rule 1113.**

**CLEAR** WOOD FINISHES are ~~clear and semi-transparent~~ coatings, including lacquers and varnishes, applied to wood substrates, including floors, decks and porches, to provide a ~~transparent or translucent~~ solid film.

Or Add

**PIGMENTED** WOOD FINISHES are opaque lacquers or varnishes, not including undercoaters, which are applied to wood to provide a solid film.

# MOLD AND FORM RELEASE COMPOUNDS

- Include in Rule 1113?
- Include in Proposed Rule 1161?
- Remove Form Release from Rule 1113?
- Appropriate Test Method for Non-Film Forming, Neat Oily Compounds?



# **NEXT STEPS**

- **Schedule Public Workshop**
- **Finalize Exclusion Pathway in Test Method**
- **Set date of Public Hearing**

