



South Coast Air Quality Management District

21865 Copley Drive, Diamond Bar, CA 91765-4182
(909) 396-2000 • www.aqmd.gov

NOTICE OF PUBLIC MEETING TO DISCUSS AIR TOXIC RISK FROM A FACILITY IN YOUR NEIGHBORHOOD

State law ensures your right to know about possible levels of health risks from toxic air pollutants emitted by facilities in your neighborhood. South Coast Air Quality Management District (SCAQMD) Rule 1402 – Control of Toxic Air Contaminants from Existing Sources requires the following facility to notify you:

Facility Name: Carlton Forge Works
Address: 7743 E. Adams Street, Paramount, CA 90723-4200
Type of Business: Metal Forging

Even though this facility may be complying with all air pollution control regulations, some toxic air pollutants escape to the air during its normal operations. State law and SCAQMD rules require the facility to notify all of the people in the area where there is a potential health risk above established thresholds.

Summary of Health Risks

Toxic air pollutants from Carlton Forge Works may increase the cancer and non-cancer health risks for people who live in the area shown on the attached “Public Notification Area Map.” The potential health risks are highest for those living and working closest to the facility.

- **Cancer Risk - Assuming the facility’s 2012 emissions persisted for 30 years, people who live closest to the facility could have an increased cancer risk up to about 15 chances in one million.**
- **Long-Term, Non-Cancer Risk - Assuming the facility’s 2012 emissions persisted for more than 8 years, the estimated pollutant concentrations closest to the facility would be about the same level at which negative long-term non-cancer health impacts could begin to occur.**
- **Short-Term, Non-Cancer Risk - Estimated short-term concentrations due to the facility’s 2012 emissions were about 1.8 times higher than the level at which negative non-cancer health impacts could begin to occur.**

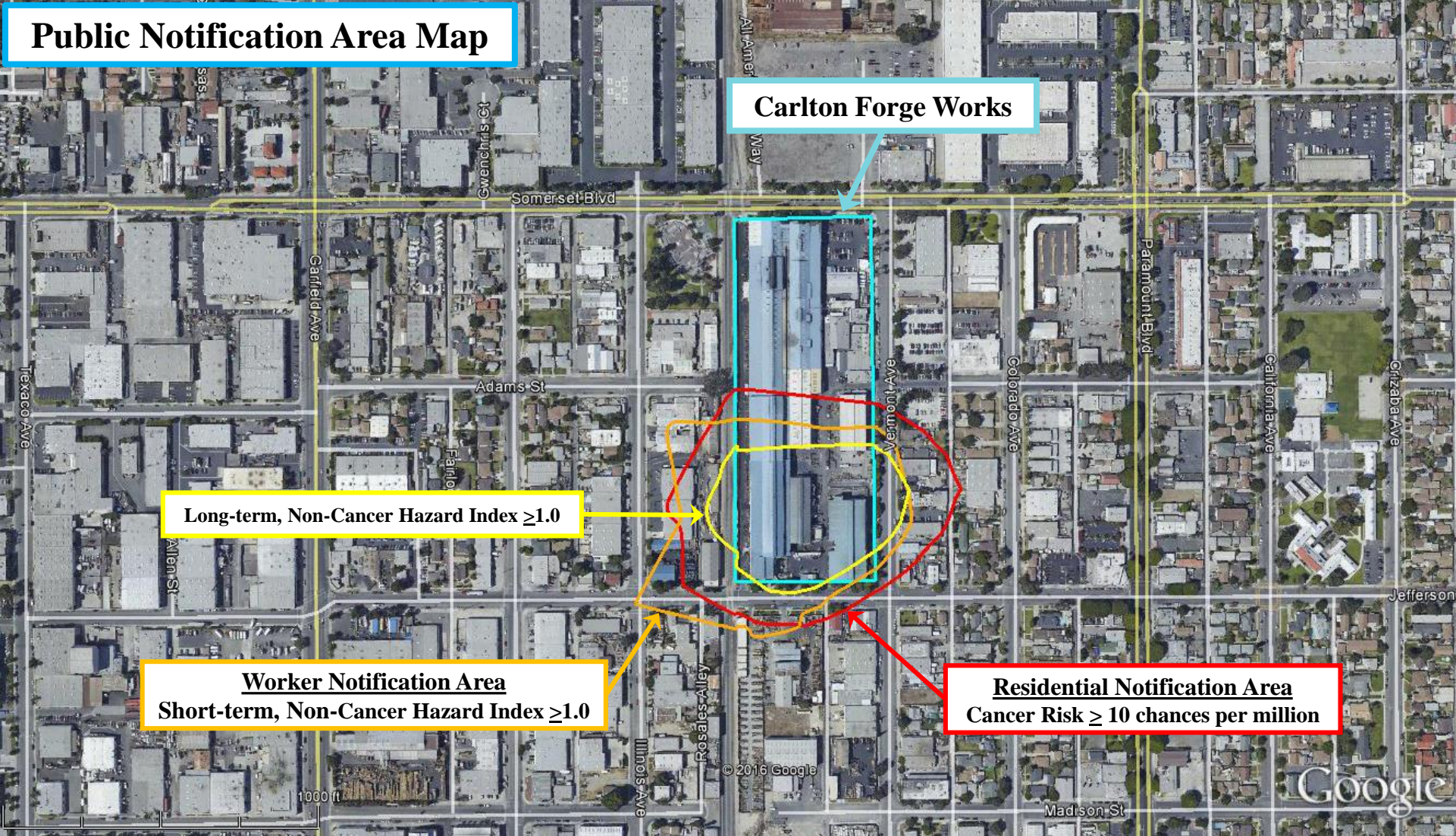
Further explanation of these health risks have been prepared by SCAQMD in the enclosed “Information Sheet”. The SCAQMD staff will conduct a public meeting at the location, date, and time listed below to answer additional questions about the emissions, potential health risks, and what is being done to reduce health risks. Officials from Carlton Forge Works will also attend the meeting to present information about their operations and to help answer your questions.

PUBLIC MEETING	<i>Date and Time:</i> November 10, 2016 at 6:00 PM
	<i>Location:</i> Gateway Cities Council of Government 16401 Paramount Blvd., Paramount, CA 90723

For more information about SCAQMD programs to control toxic air pollution or the public meeting, contact Ian MacMillan of SCAQMD at (909) 396-3244 or e-mail him at imacmillan@aqmd.gov. For more information about the facility, please contact Mr. Armando Bautista of Carlton Forge Works at (562) 633-1131.

Businesses receiving this notice should post it where it is most likely to be read by employees.

Public Notification Area Map



Carlton Forge Works

Long-term, Non-Cancer Hazard Index ≥ 1.0

**Worker Notification Area
Short-term, Non-Cancer Hazard Index ≥ 1.0**

**Residential Notification Area
Cancer Risk ≥ 10 chances per million**

Public Notification Required by SCAQMD if:

- Cancer risk is higher than 10 chances per million.
- Non-Cancer 'Hazard Index' is higher than 1.0.

A 'Hazard Index' less than 1.0 indicates that non-cancer health effects are not expected.

INFORMATION SHEET

What are toxic air pollutants and where do they come from?

Chemicals that cause cancer or other health effects that are released into the air are called toxic air pollutants. Toxic air pollutants come from a variety of sources including chemical plants and manufacturers as well as cars, trucks and smaller businesses. Many products used at home, such as cleaners and paint thinners also contain toxic air pollutants.

What toxic air pollutants does this facility emit?

Under normal operation, this facility emits various toxic air pollutants, particularly metal particulates such as nickel, hexavalent chromium, and arsenic. These pollutants pose a potential cancer and non-cancer health risks to those living or working in close proximity to Carlton Forge Works if they were exposed to the facility's emissions in 2012 for many years. Emissions of many key toxic air pollutants from this facility have been decreasing since 2013.

What is the health risk from this facility?

For chemicals that could cause health effects, a calculation called a Health Risk Assessment was done. This is the best method government officials currently have for estimating the chance that breathing a chemical over a long period of time will cause either cancer or non-cancer health effects. The cancer risk is written as the "number of chances in one million." For non-cancer effects, risks are expressed with a Hazard Index (HI). If the HI is less than 1.0, then negative non-cancer health effects are not expected. A HI above 1.0 does not indicate that a negative non-cancer health effect will occur, but the odds will increase the higher the HI is above 1.0.

The long-term health risk estimates conservatively assumes that a person is continually exposed for 30 years at a single outdoor location to the toxic air pollutants that came from Carlton Forge Works in 2012. Most people do not stay in one location for that amount of time, so their actual risk is likely to be lower.

Based on the risk assessment, people who live in the area shown on the Public Notification Area Map would have an increased cancer risk between 10 and about 15 chances in one million because of toxic air pollutant emissions from this facility. The attached Public Notification Area Map shows how far the 10 chances in one million cancer risk level extends into the community. The maximum short-term non-cancer HI is about 1.8 and the maximum long-term non-cancer HI is about 1.0.

How does the risk from this facility compare to other risks?

The cancer risk from this facility is relatively small compared to the average overall risk for people living in the United States. According to the American Cancer Society, about four out of ten people will get cancer sometime during their lifetime, due to genetics, lifestyle, environmental exposures, etc. In other words, the odds of getting cancer at some time in your life are about 400,000 in one million.

What is the cancer risk just from toxic air pollution?

SCAQMD's Multiple Air Toxics Exposure Study IV (MATES IV) presents estimates of cancer risk throughout SCAQMD's four county jurisdiction. The average cancer risk from all pollutants emitted from all sources (cars, trucks, factories, power plants, etc.) is about 900 chances in one million. In the neighborhood around Carlton Forge Works, the MATES IV study identified a cancer risk of about 1,120 chances in one million. SCAQMD is also conducting air monitoring studies in the area around Carlton Forge. Monitoring data collected in the past few years has shown elevated levels of hexavalent chromium that have an unidentified source. SCAQMD is currently expanding its monitoring and investigation to identify the source of this elevated hexavalent chromium. Information about this investigation can be found online: www.aqmd.gov/home/regulations/compliance/air-monitoring-activities

How was the health risk from this facility determined?

The health risk assessment relied on data collected directly from emission sources at the facility as well as ambient air quality monitoring instruments set up near Carlton Forge Works. This data was input into a computer model and Guidance from the state Office of Environmental Health Hazard Assessment (OEHHA) was applied on the model output to determine how the levels of air pollution may impact people’s health. The OEHHA guidance was updated in March 2015 to specifically address recent scientific advancements in the understanding of how toxic air pollutants have a greater influence on children than previously considered. This results in a roughly three-fold increase in residential cancer risk estimates compared to previous assessments, even at the same emissions level.

What is being done to reduce the health risks from this facility?

Since 2013, Carlton Forge has taken several steps to reduce emissions from its operations, including voluntary installation of additional air pollution control equipment, enclosing their grinding operation, and increasing housekeeping activities, to name a few. SCAQMD is also undertaking rule-making (Rule 1430) designed to address metal emissions from facilities like Carlton Forge. Information on this effort is available here: www.aqmd.gov/home/regulations/rules/proposed-rules#1430.1

How can I get more information?

A copy of the Carlton Forge Works health risk assessment report is available for your review at the following libraries. The health risk assessment and other information about SCAQMD activities related to Carlton Forge Works can be found on our website at:

www.aqmd.gov/home/regulations/compliance/toxic-hot-spots-ab-2588/carlton-forge-works

Paramount Library, (562) 630-3171
16254 Colorado Ave
Paramount, CA 90723
Tue & Wed: 10 AM - 8 PM
Thu & Fri: 10 AM - 6 PM
Sat: 10 AM - 5 PM
Sun & Mon: Closed

SCAQMD Library, (909) 396 - 2600
21865 Copley Drive
Diamond Bar, CA 91765
Tue - Thu: 10 AM - 5 PM
Fri: 8 AM - 3 PM
Sat, Sun, Mon: Closed