

Budget and Economic Outlook Update

Board Meeting

February 4, 2022



Presentation Topics

- Economic Indicators
- South Coast AQMD Metrics and Economic Implications
- Summary Charts

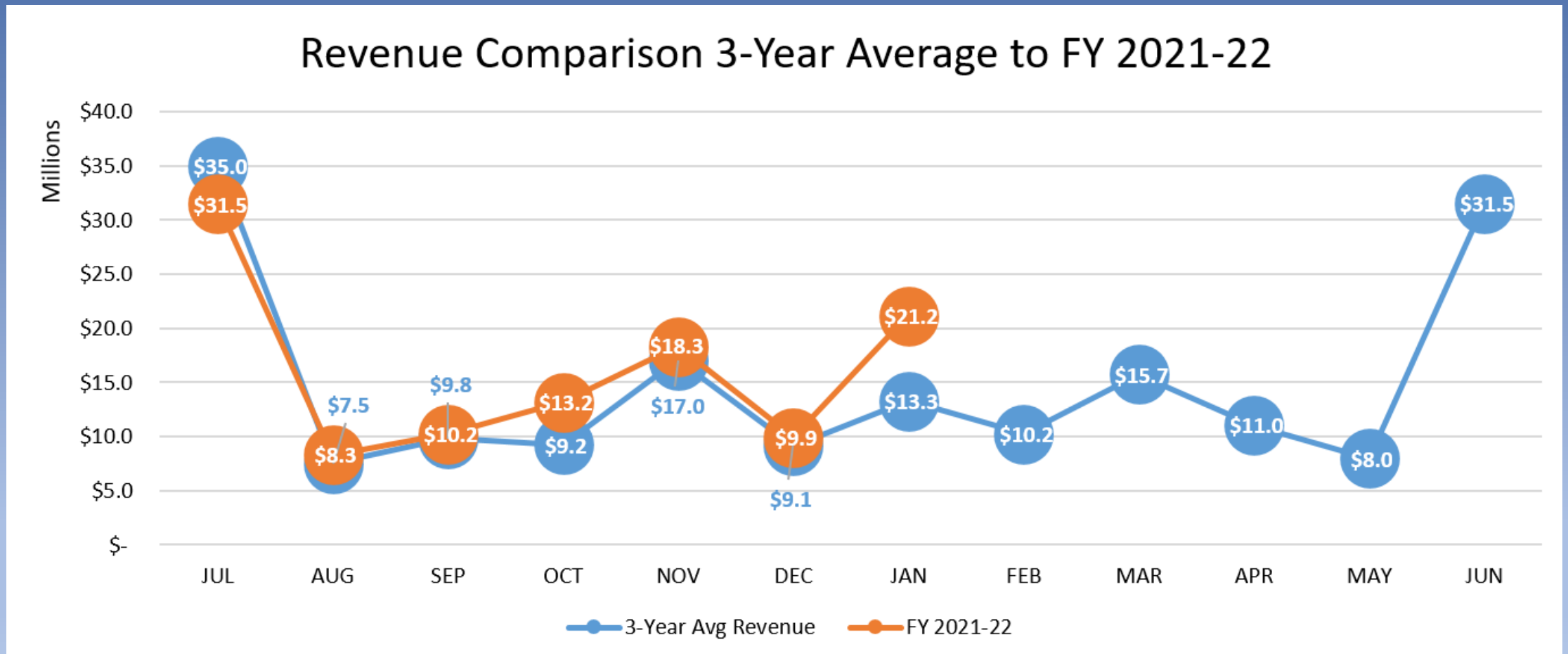
Summary of Metrics – Monthly

Metric			
State Economic Indicators	December 2020	December 2021	Notes
<i>Statewide Refinery Activity (Million Barrels Crude Oil Input)</i>	34.1	41.5	
<i>Port TEU Throughput (Million TEUs)</i>	1.7	1.5	
<i>Statewide Unemployment</i>	9.3%	6.5%	
South Coast AQMD	January 2021	January 2022	
<i>Revenue</i>	\$12.6 million	\$21.1 million	<i>Jan 2022 higher than previous year due to quarterly grant reimbursements. Year end total expected to be similar to last year.</i>
<i>Expenditures</i>	\$13.0 million	\$11.8 million	
<i>Vacancy Rate</i>	16.7%	16.8%	
<i>Permit Applications Received</i>	379	429*	(*Jan 2022 preliminary)
<i>Expired or Potentially Expired Permits</i>	109	491	

Summary of Metrics – Year to Date

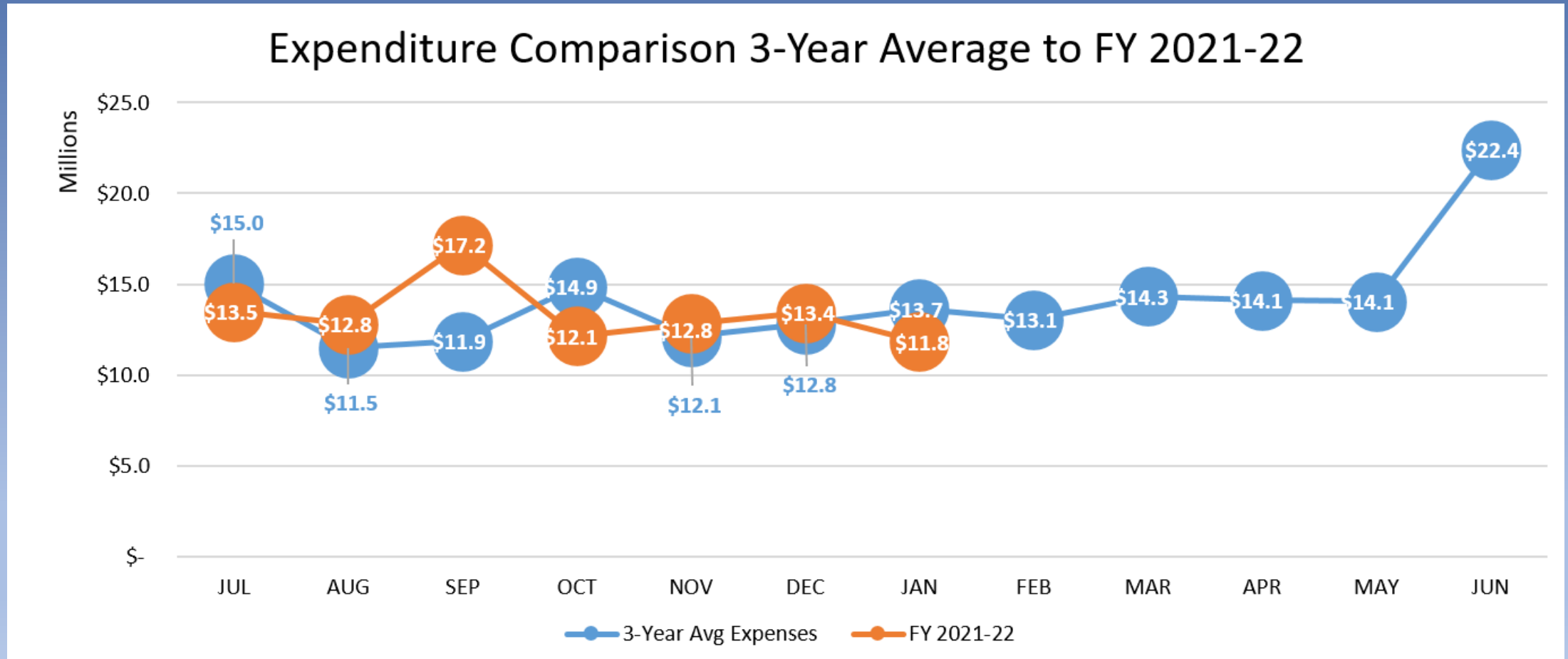
Metric			
State Economic Indicators	Jan 2020 – Dec 2020	Jan 2021 – Dec 2021	Notes
<i>Statewide Refinery Activity (Million Barrels Crude Oil Input)</i>	481	525	
<i>Port TEU Throughput (Million TEUs)</i>	17.3	20.1	
South Coast AQMD	Jul 2020 - Jan 2021	July 2021 – Jan 2022	
<i>Revenue</i>	\$100.5 million	\$112.6 million	
<i>Expenditures</i>	\$92.2 million	\$93.7 million	
<i>Permit Applications Received</i>	3,533	3,398*	(*Jan 2022 preliminary)
<i>Expired or Potentially Expired Permits</i>	671	1,630	1 year to reinstate

Revenue



January 2022 revenue is significantly higher than the previous year due to quarterly reimbursements for various state and federal grants. Year end total expected to be similar to last year.

Expenditures

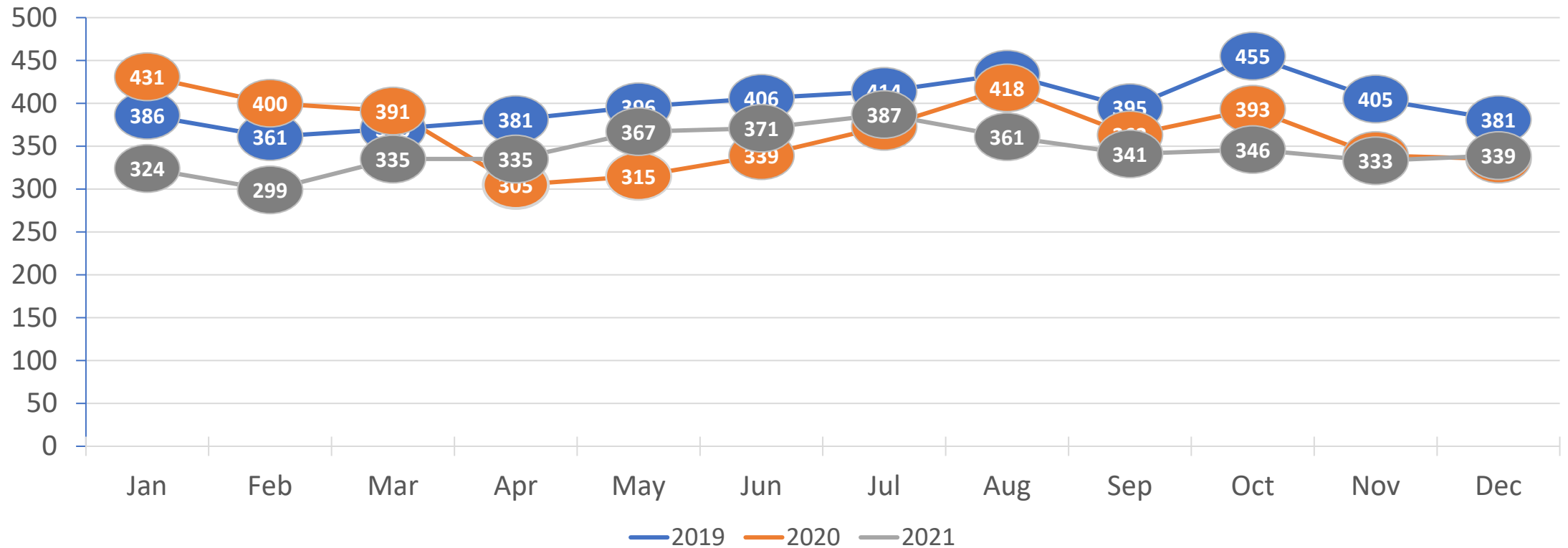


Staffing Levels as of 2/2/22

- 959 budgeted FTEs
- 168 vacant positions
- 791 filled positions
- 17.5 % vacancy rate

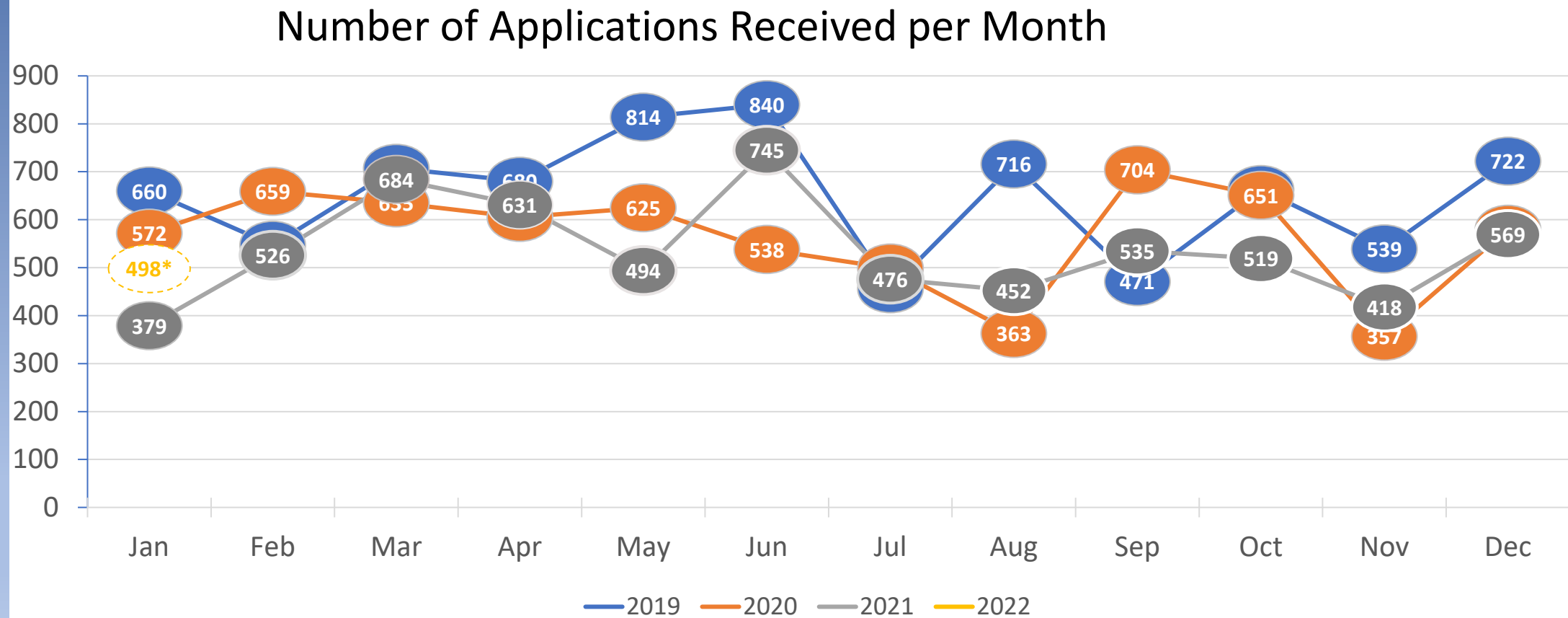
Emission Trends

NOx Emissions, RECLAIM Major Sources (tons)



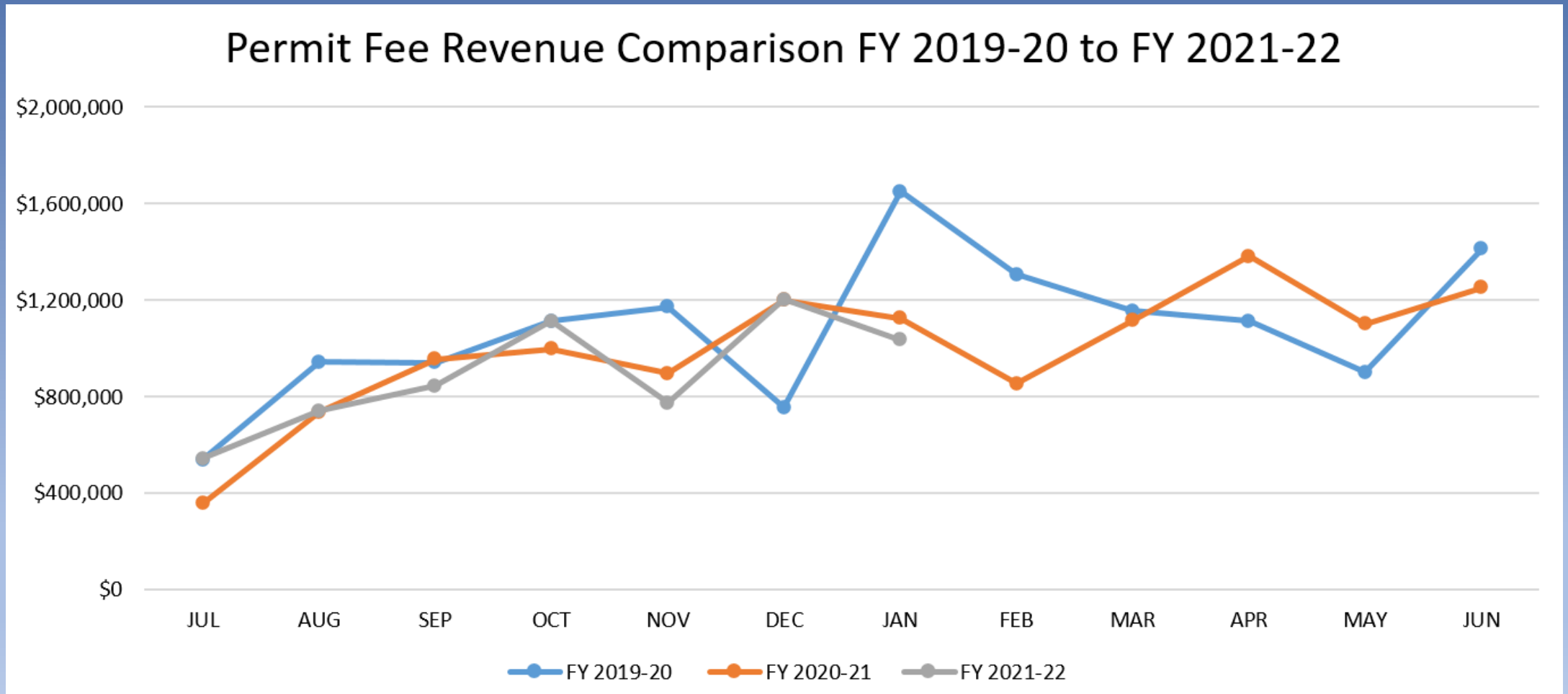
As of January 21, 2022

Permit Activity

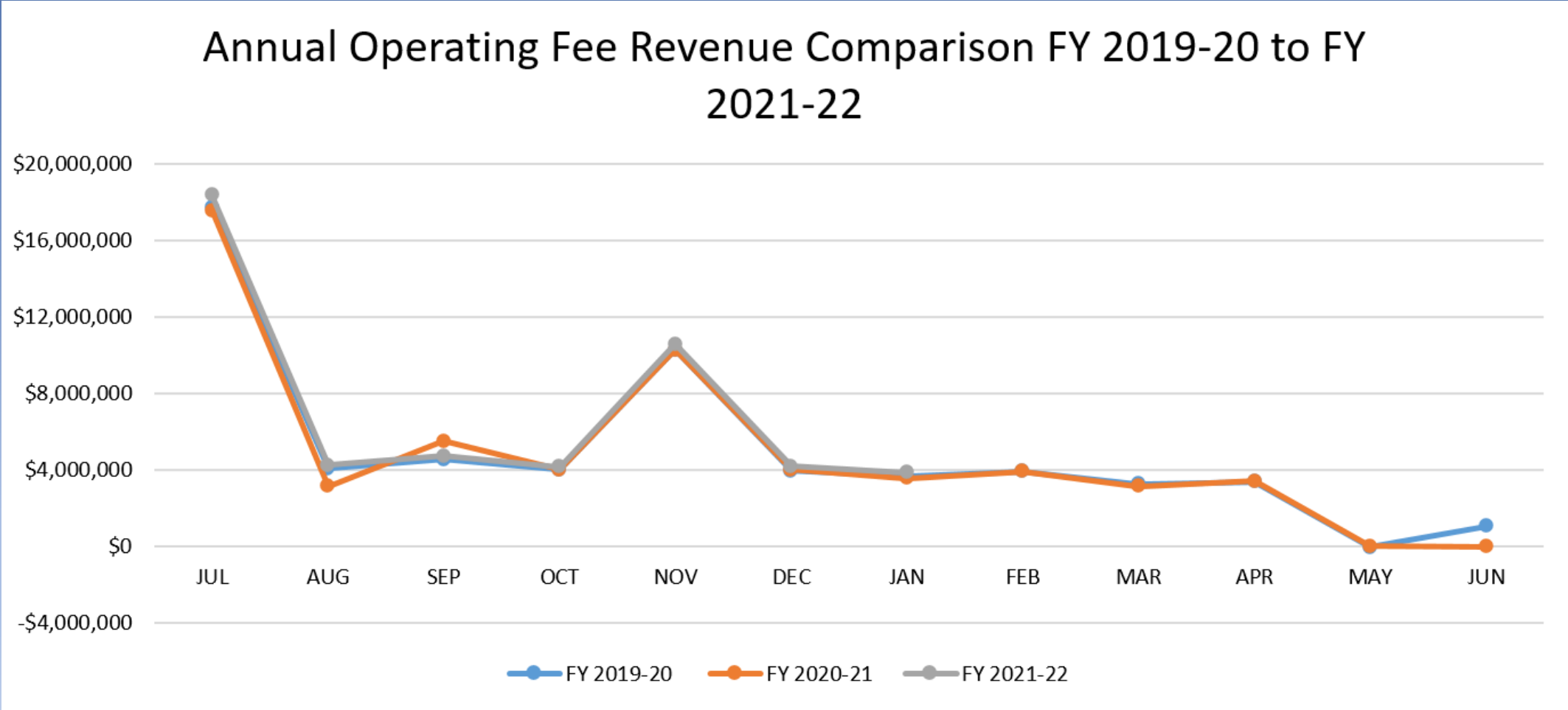


*January Data Preliminary

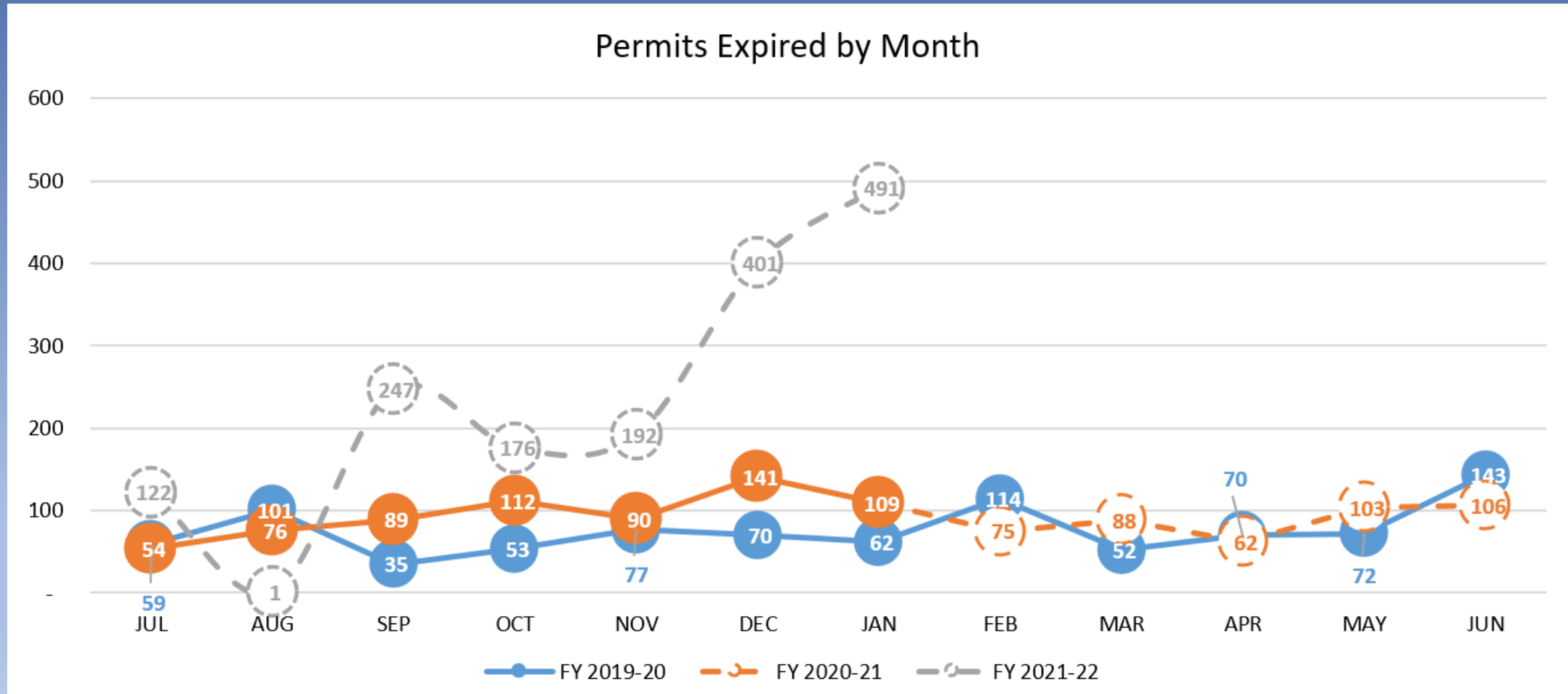
Permit Revenue



Annual Operating Fee Revenue



Permits - Expired and Potentially Expired



Dotted lines represent permits that have time to be reinstated

Summary of Metrics – Monthly

Metric			
State Economic Indicators	December 2020	December 2021	Notes
<i>Statewide Refinery Activity (Million Barrels Crude Oil Input)</i>	34.1	41.5	
<i>Port TEU Throughput (Million TEUs)</i>	1.7	1.5	
<i>Statewide Unemployment</i>	9.3%	6.5%	
South Coast AQMD	January 2021	January 2022	
<i>Revenue</i>	\$12.6 million	\$21.1 million	
<i>Expenditures</i>	\$13.0 million	\$11.8 million	
<i>Vacancy Rate</i>	16.7%	16.8%	
<i>Permit Applications Received</i>	379	429*	(*Jan 2022 preliminary)
<i>Expired or Potentially Expired Permits</i>	109	491	

Summary of Metrics – Year to Date

Metric			
State Economic Indicators	Jan 2020 – Dec 2020	Jan 2021 – Dec 2021	Notes
<i>Statewide Refinery Activity (Million Barrels Crude Oil Input)</i>	481	525	
<i>Port TEU Throughput (Million TEUs)</i>	17.3	20.1	
South Coast AQMD	Jul 2020 - Jan 2021	July 2021 – Jan 2022	
<i>Revenue</i>	\$100.5 million	\$112.6 million	
<i>Expenditures</i>	\$92.2 million	\$93.7 million	
<i>Permit Applications Received</i>	3,533	3,398*	(*Jan 2022 preliminary)
<i>Expired or Potentially Expired Permits</i>	671	1,630	1 year to reinstate