

AB 617 Community Steering Committee Meeting

Wilmington/Carson/West Long Beach
May 9, 2019

Improving On-road Vehicle Data: Automated License Plate Readers (ALPR) Portable Emission Acquisition System (PEAQS)

Sara Forestieri, Victoria Villa, Jeremy Smith
California Air Resources Board

What is ALPR?

- Collect footage of on-road traffic
- Use ALPR software to read license plates
- Use DMV Registration data and other databases to link license plate to vehicle information



Potential Applications of ALPR Data



- Understand what vehicles operate in the community
- Determine split of local vs non-local trucks
- Understand how often commercial trucks operate certain roads (e.g., truck-prohibited routes)
- Validate/refine on-road vehicle emission estimates
 - The fraction of light- vs heavy-duty vehicles
 - Model year distribution and therefore age
 - Traffic counts
- Identify older trucks for targeted incentives

3

ALPR Privacy and Usage Policy



- Agencies that collect and process ALPR data will comply with 2015 Senate Bill 34 (SB 34) Automated License Plate Recognition Act requirements
https://leginfo.legislature.ca.gov/faces/billNavClient.xhtml?bill_id=201520160SB34
- Agencies must maintain reasonable security procedures and practices to protect ALPR info and implement a usage and privacy policy for ALPR info
- Sections 1798.29 and 1798.82 also require any agency or business in California to disclose in specified way any breach of the security of the system or data
- CARB's ALPR privacy and usage policy:
https://www.arb.ca.gov/enf/arb_alpr_privacy_usage_policy_050317.pdf

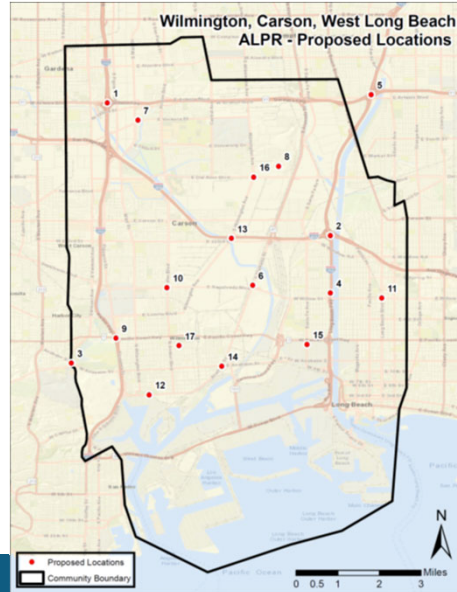
4

On-road Mobile Source Concerns



Community Identified Initial Locations for Discussion

ID	Location
1	110/91 Freeway
2	405/710 Freeway
3	5 Points
4	710 Freeway
5	91/710 Freeway
6	Alameda Corridor
7	Carson Logistics
8	Carson Warehousing District
9	On/Off Ramp Traffic
10	E Sepulveda Blvd. and S Avalon Blvd.
11	Traffic East of Transportation Corridor
12	Wilmington Waterfront Park
13	405 Fwy Off Ramp Traffic - S Wilmington Ave
14	E Anaheim St. and Alameda St.
15	Santa Fe Ave and PCH
16	S. Wilmington Ave and E. Del Amo Blvd
17	Lakme Avenue



Portable Emission AcQuisition System (PEAQS)

What is PEAQS?



Video available on YouTube: https://www.youtube.com/watch?v=5kdsRR7_VVE

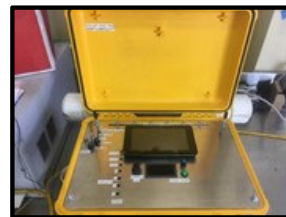
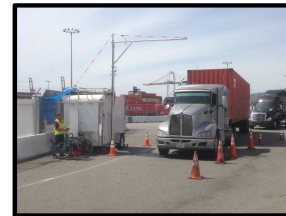
7

PEAQS Field Measurements



- **PEAQS platforms and deployments**

- **Prototype** trailer and suitcase sized platforms
- 12 weeks of pilot measurements across California
- Assessing ability to serve as a screening tool for enforcement programs
- CARB will test first unattended system for long-term operation summer 2019
- Building additional PEAQS units – Expected availability 2020



PEAQS is a prototype system under active development

8