

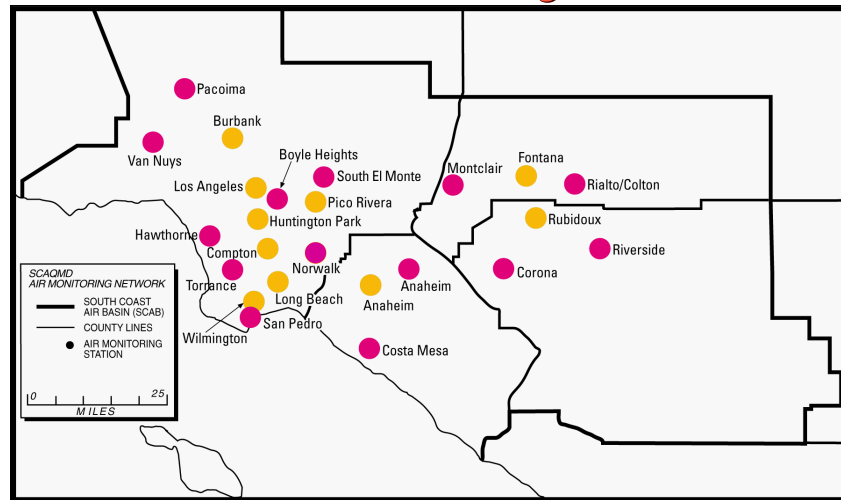
## MATES III Technical Advisory Group

December 9, 2003

### Background

- MATES II conducted 1998-99
- Bulk of air toxic risk from mobile sources
- Diesel exhaust accounted for 71%

## MATES II Monitoring Network



● Fixed Sites ● Microscale Sites

## MATES III Goals

- Assess current air toxics levels
- Determine community level gradients
- Update toxics emissions inventory
- Update dispersion modeling and exposure analysis
- Risk characterization
  - Carcinogenic risk
  - Non-cancer effects

## MATES III Components

- Ambient Measurements
- Emissions Inventory Update
- Dispersion Modeling
- Risk Characterization

## Proposed Substances

- Significant risk drivers from MATES II
- Other substances?
  - Environmental tobacco smoke
  - Naphthalene
    - Resource issues (outsource analyses)
    - Potential health significance
- Seeking partial support from EPA Air Toxics Program – Specific list of toxics

## Proposed Substances

Benzene	Carbon Tetrachloride	Chloroform
1,3-Butadiene	Propylene Dichloride	Acrolein
Methylene Chloride	Tetrachloroethylene (Perchloroethylene)	Trichloroethylene, TCE
Vinyl Chloride	Arsenic	Beryllium
Cadmium	Chromium VI	Lead
Manganese	Nickel	Acetaldehyde
Formaldehyde	Organic Carbon	Elemental Carbon
Total Carbon	PM <sub>10</sub>	PM <sub>2.5</sub>
Naphthalene		Diesel PM

## Proposed Monitoring Sites

- Fixed sites (1 year monitoring)
  - Ten sites from MATES II
- Movable/Microscale sites (1–2 months) criteria
  - Near emission source
  - EJ issues
  - Neighborhood gradients
  - Elevated risk from MATES II
- Sampling: 1 in 3 days or 1 in 6 days

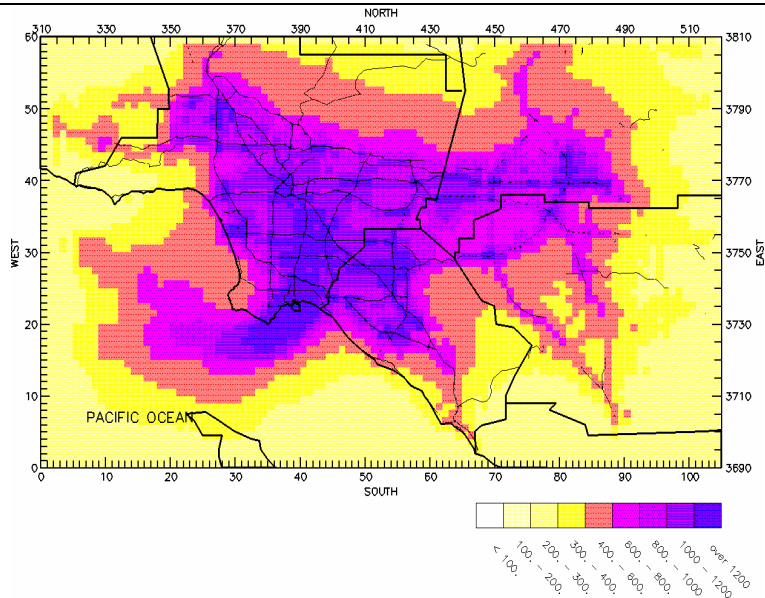
## MATES II Fixed Sites

Site	Period of Record	Address
Anaheim	4/29/98 – 3/25/99	1010 S. Harbor Blvd.
Burbank	4/05/98 – 3/31/99	228 W. Palm Ave.
Compton	7/22/98 – 3/31/99	720 N. Bullis Rd.
Fontana	4/05/98 – 3/31/99	14360 Arrow Highway
Huntington Park	6/10/98 – 3/31/99	6301 S. Santa Fe Ave.
Long Beach	4/05/98 – 3/31/99	3648 N. Long Beach Blvd.
Los Angeles	4/05/98 – 3/31/99	1630 N. Main St., Los Angeles
Pico Rivera	4/23/98 – 3/31/99	3713B San Gabriel River Parkway
Rubidoux	5/29/98 – 3/31/99	5888 Mission Blvd.
Wilmington	7/31/98 – 3/31/99	900 E. Lomita Blvd.

## Potential Microscale Sites

- Airports
- Freeway interchanges
- Rail traffic – Alameda corridor/ east
- Diesel traffic
- Multiple industrial/commercial sources

## Model Estimated Risk From MATES II



## Tentative Schedule

- Draft workplan - December '03
- Technical Advisory Group Review of draft workplan – Jan' 04
- Finalize monitoring workplan – Jan '04
- Begin Monitoring – Feb '04
- Finalize Inventory and Modeling workplan Feb '04

## Tentative Schedule (cont.)

- Advisory Group or Sub-Group review for specific issues – as needed
  - Diesel PM methodology
  - Modeling methodology/ interim results
  - Inventory methodology/ interim results
- Draft report – June '05
- Final report – July '05