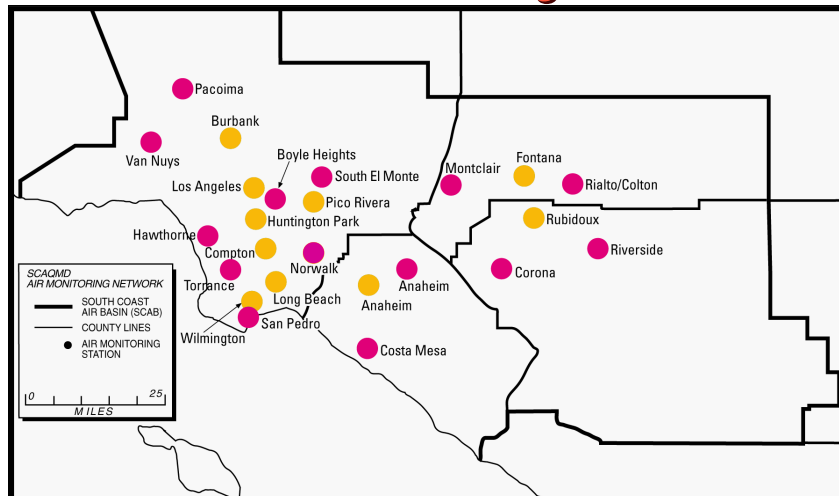


MATES III Technical Advisory Group

Discussion on Microscale Monitoring Sites

March 31, 2004

MATES II Monitoring Network

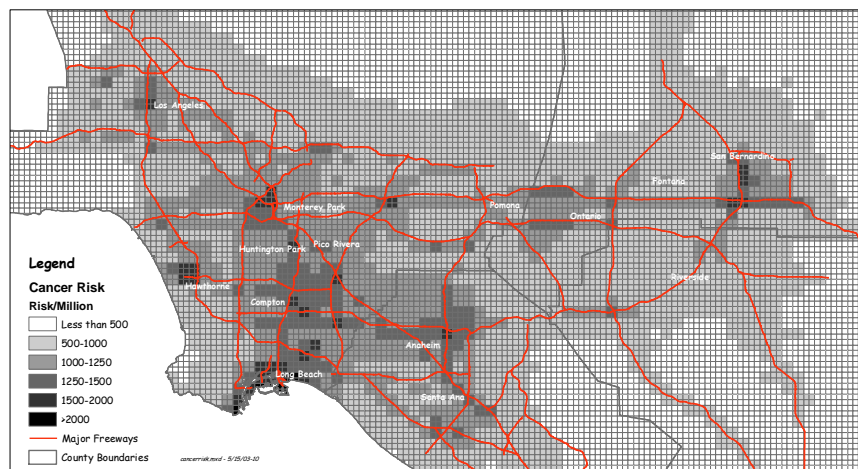


● Fixed Sites ● Microscale Sites

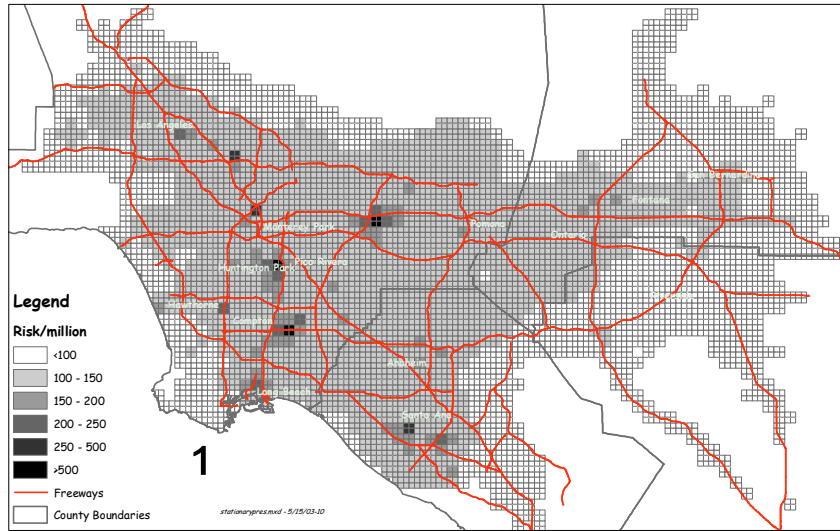
Microscale Sites

- Neighborhood scale measurements
- Levels compared to fixed sites
- Selection criteria
 - Community concerns
 - Town Hall meetings
 - Public Advisor
 - Advisory Committees
 - Near emissions source/s
 - MATES II modeled risk

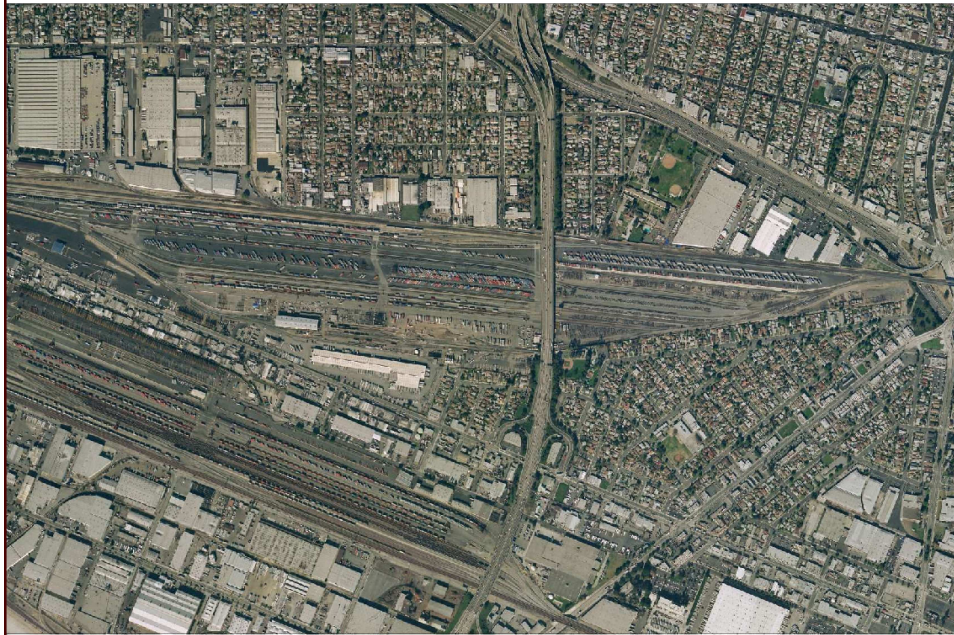
Range of Risk From All Sources In the South Coast Air Basin,
Including All Mobile and Stationary Sources

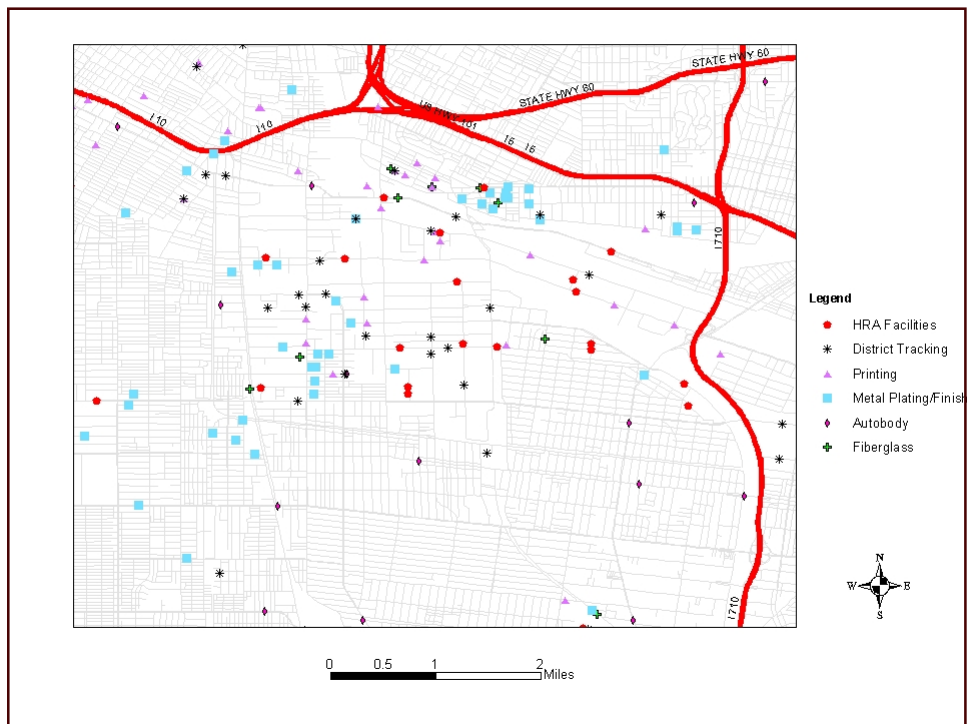
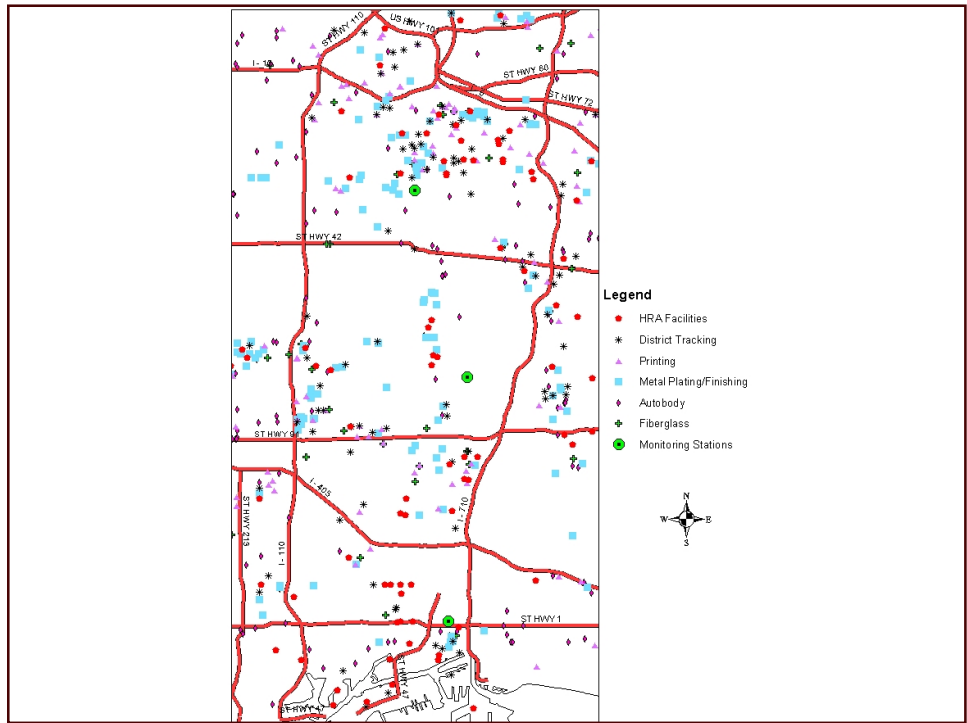


Range of Risk from Stationary Sources Only in the South Coast Air Basin

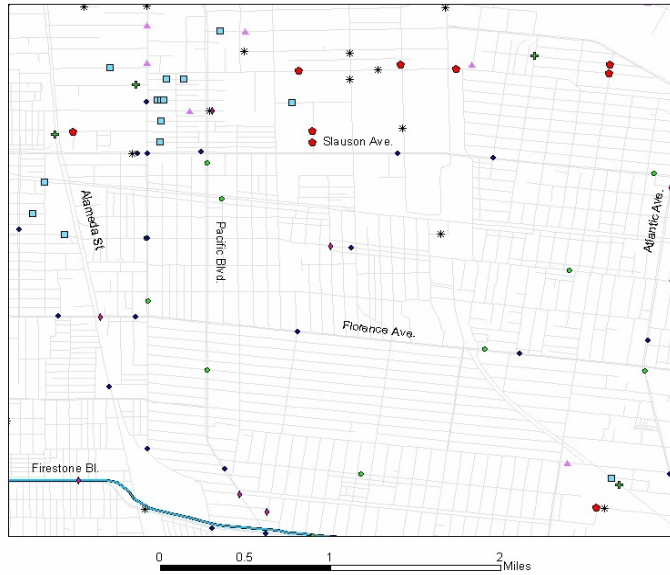


East L.A. Railyard Area





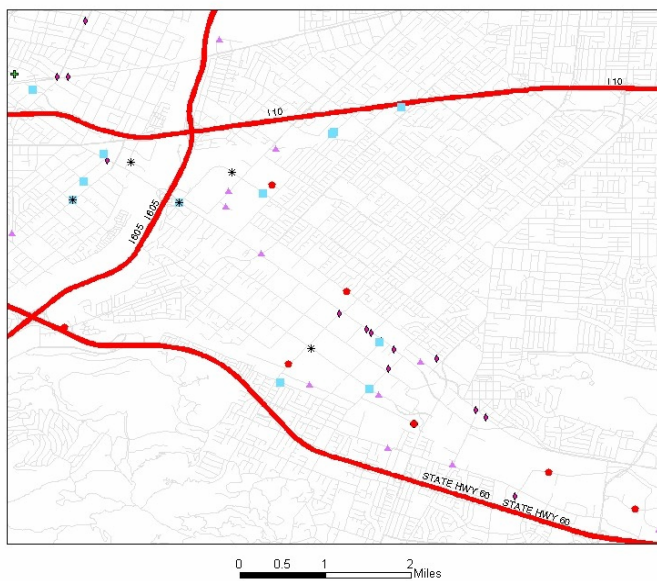
Huntington Park Area



- Legend**
- HRA Facilities
 - * District Tracking
 - ▲ Printing
 - Metal Plating/Finishing
 - ◆ Autobody
 - ⊕ Fiberglass
 - Gas Stations
 - Dry Cleaner



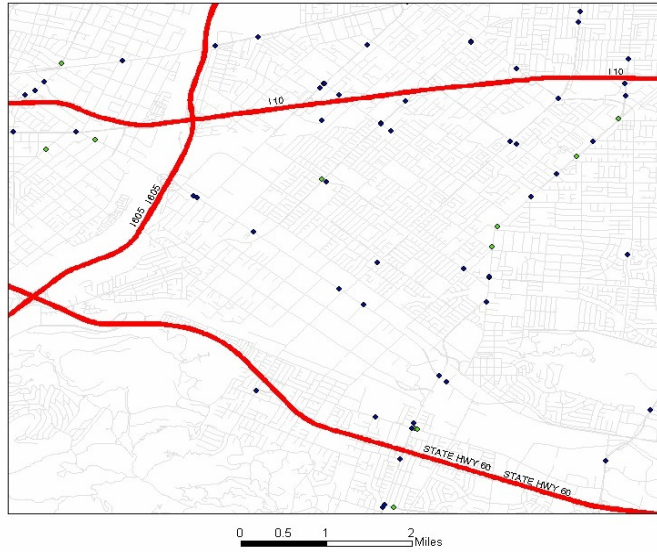
Bassett Area



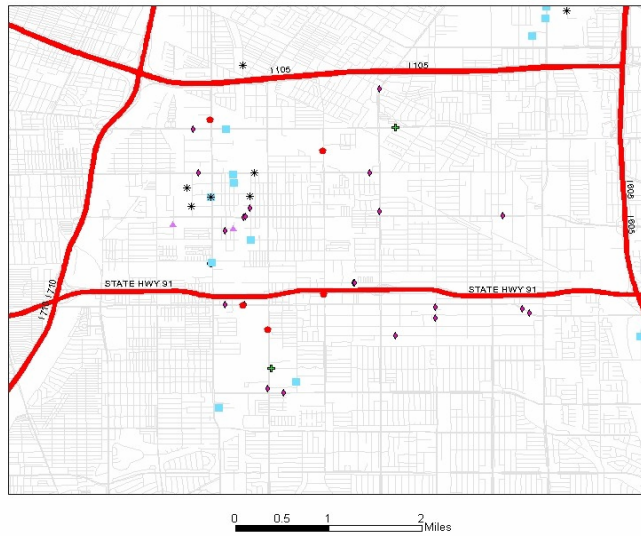
- Legend**
- HRA Facilities
 - * District Tracking
 - ▲ Printing
 - Metal Plating/Finishing
 - ◆ Autobody
 - ⊕ Fiberglass



Bassett Area



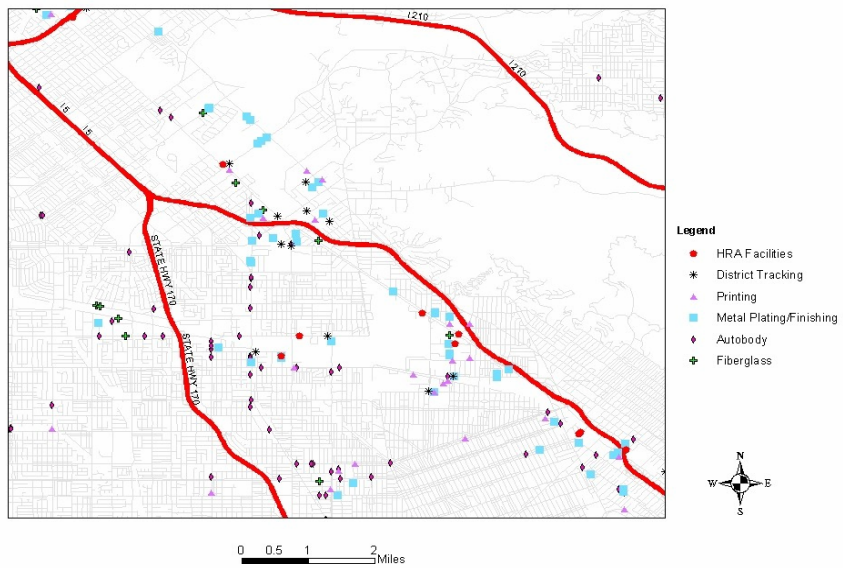
Paramount Area



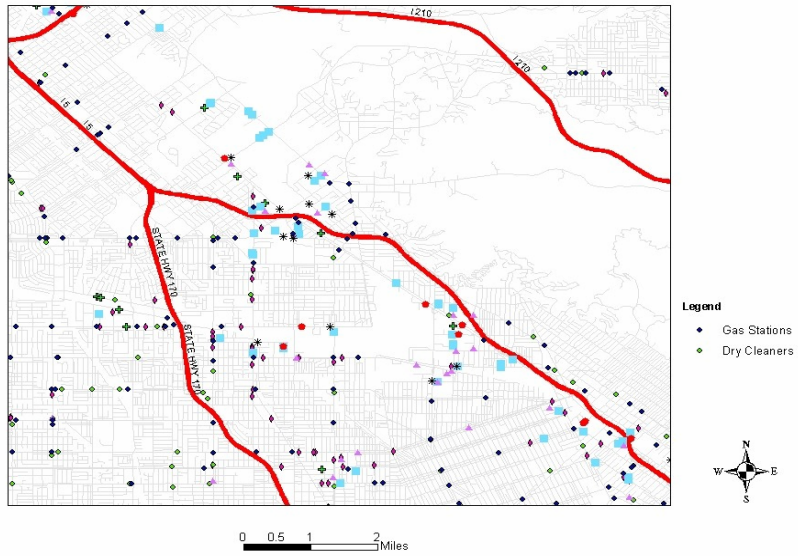
Paramount Area



Sun Valley Area



Sun Valley Area



- List of potential sites - Handout