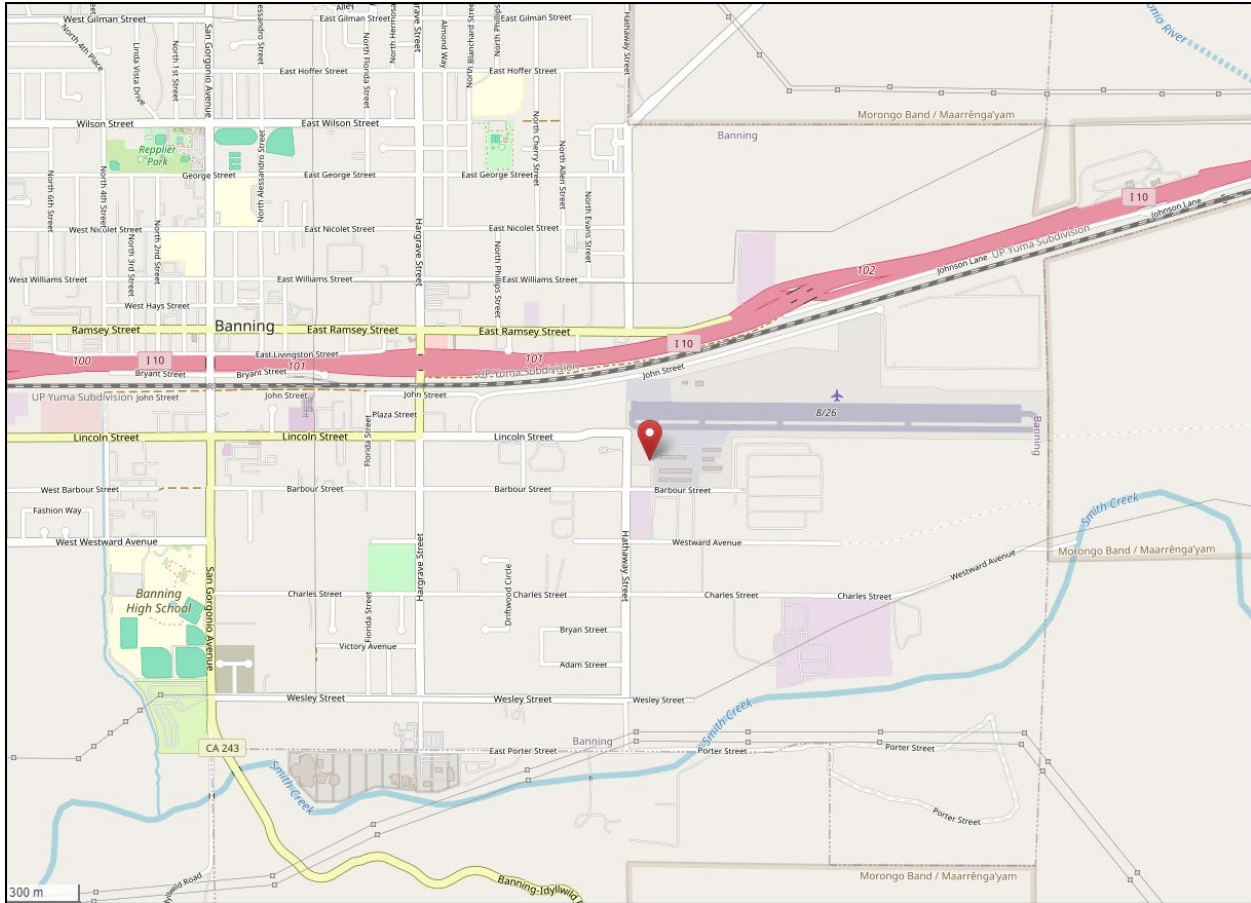


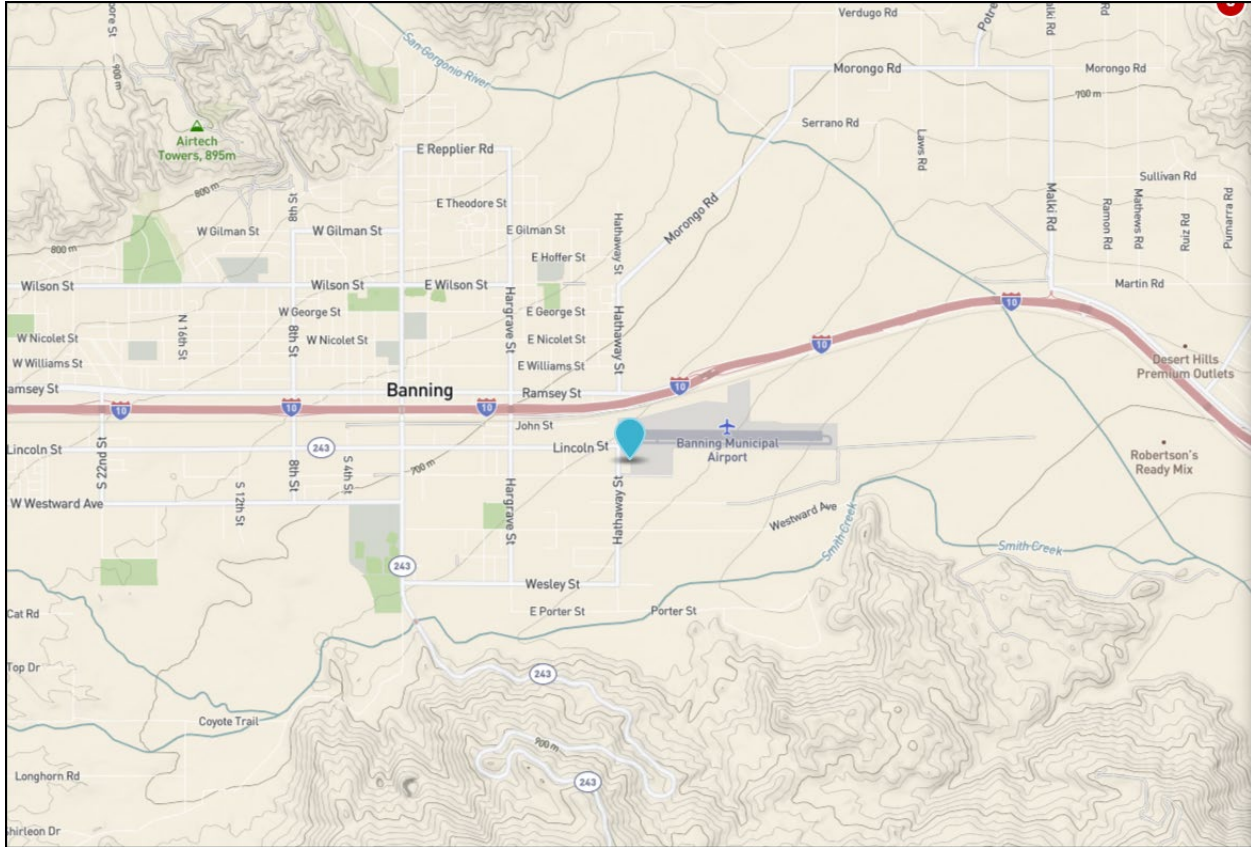
South Coast AQMD Site Survey Report for Banning Airport

Last updated: May 7, 2024



AQS ID	ARB Number	Site Start Date	Reporting Agency and Agency Code
060650012	33164	04/1997	South Coast AQMD (0972)

Site Address	County	Air Basin	Latitude	Longitude	Elevation
200 S. Hathaway Street Banning, CA 92220	Riverside	South Coast	33.920860	-116.858410	671



Detailed Site Information

Local site name		Banning Airport		
AQS ID		060650012		
GPS coordinates (decimal degrees)		Latitude: 33.920860 Longitude: -116.858410		
Street Address		200 S. Hathaway Street, Banning, CA 92220		
County		Riverside		
Distance to roadways (meters)		80 Hathaway; 414 I-10		
Traffic count (AADT, year)		861, 2022, Hathaway; 104,000, 2022, I-10		
Groundcover (e.g. asphalt, dirt, sand)		Dirt		
Representative statistical area name (i.e. MSA, CBSA, other)		40140-Riverside-San Bernardino-Ontario, CA MSA		
Pollutant, POC	Nitrogen Dioxide, 1	Ozone, 1	PM10, 1	Continuous PM2.5, 3
Primary / QA Collocated / Other	N/A	N/A	Primary	Other
Parameter code	42602	44201	81102	88502
Basic monitoring objective(s)	NAAQS	NAAQS	NAAQS	General Public Info
Site type(s)	Population Exposure	Population Exposure	Population Exposure	Population Exposure
Monitor (type)	SLAMS	SLAMS	SLAMS	Other
Network Affiliation	N/A	N/A	N/A	N/A
Instrument manufacturer and model	Teledyne T200	Teledyne T400	Tisch SSI TE- PM10PLUS-BL	Met One BAM 1020
Method code	099	087	141	731
FRM/FEM/ARM/ other	FRM	FEM	FRM	Non-FEM
Collecting Agency	South Coast AQMD	South Coast AQMD	South Coast AQMD	South Coast AQMD
Analytical Lab (i.e., weigh lab, toxics lab, other)	N/A	N/A	South Coast AQMD	N/A
Reporting Agency	South Coast AQMD	South Coast AQMD	South Coast AQMD	South Coast AQMD
Spatial scale (e.g. micro, neighborhood)	Neighborhood	Neighborhood	Neighborhood	Neighborhood
Monitoring start date (MM/DD/YYYY)	04/01/1997	04/01/1997	04/01/1997	02/10/2006
Current sampling frequency (e.g. 1:3, continuous)	Continuous	Continuous	1:6	Continuous
Calculated sampling frequency (e.g. 1:3/1:1)	N/A	N/A	1:6	N/A
Sampling season (MM/DD-MM/DD)	01/01-12/31	01/01-12/31	01/01-12/31	01/01-12/31
Probe height (meters)	4.1	4.1	2.5	4.3
Distance from supporting structure (meters)	N/A	N/A	N/A	N/A
Distance from obstructions on roof (meters)	N/A	N/A	N/A	N/A

Distance from obstructions not on roof (meters)	N/A	N/A	N/A	N/A
Distance from trees (meters)	N/A	N/A	N/A	N/A
Distance to furnace or incinerator flue (meters)	N/A	N/A	N/A	N/A
Distance between collocated monitors (meters)	N/A	N/A	N/A	N/A
Unrestricted airflow (degrees)	360°	360°	360°	360°
Probe material for reactive gases (e.g. Pyrex, stainless steel, Teflon)	Teflon	Teflon	N/A	N/A
Residence time for reactive gases (seconds)	16.2	11.3	N/A	N/A
Will there be changes within the next 18 months? (Y/N)	No	No	No	No
Is it suitable for comparison against the annual PM2.5? (Y/N)	N/A	N/A	N/A	N/A
Frequency of flow rate verification for manual PM samplers	N/A	N/A	Monthly	N/A
Frequency of flow rate verification for automated PM analyzers	N/A	N/A	N/A	Monthly
Frequency of one-point QC check for gaseous instruments	Nightly	Nightly	N/A	N/A
Last Annual Performance Evaluation for gaseous parameters (MM/DD/YYYY)	04/28/2023	04/28/2023	N/A	
Last two semi-annual flow rate audits for PM monitors (MM/DD/YYYY, MM/DD/YYYY)	N/A	N/A	04/19/2023 10/17/2023	04/19/2023 10/17/2023

Pollutant, POC	WS & D, 1/1	RH/T, 1/1	BP, 1	
Primary / QA Collocated / Other	N/A	N/A	N/A	
Parameter code	61101/61102	62201/62101	64101	
Basic monitoring objective(s)	Research	Research	Research	
Site type(s)	Meteorological	Meteorological	Meteorological	
Monitor (type)	SLAMS	SLAMS	SLAMS	
Network Affiliation	N/A	N/A	N/A	
Instrument manufacturer and model	RM Young 05305V	Rotronic HC2-S3	Vaisala PTB110	
Method code	065/065	063/063	015	
FRM/FEM/ARM/ other	N/A	N/A	N/A	
Collecting Agency	South Coast AQMD	South Coast AQMD	South Coast AQMD	
Analytical Lab (i.e., weigh lab, toxics lab, other)	N/A	N/A	N/A	
Reporting Agency	South Coast AQMD	South Coast AQMD	South Coast AQMD	
Spatial scale (e.g. micro, neighborhood)	Neighborhood	Neighborhood	Neighborhood	
Monitoring start date (MM/DD/YYYY)	04/1997	04/1997	04/1997	
Current sampling frequency (e.g. 1:3, continuous)	Continuous	Continuous	Continuous	
Calculated sampling frequency (e.g. 1:3/1:1)	1:1	1:1	1:1	
Sampling season (MM/DD-MM/DD)	01/01-12/31	01/01-12/31	01/01-12/31	
Probe height (meters)	10	3.5	3.5	
Distance from supporting structure (meters)	N/A	N/A	N/A	
Distance from obstructions on roof (meters)	N/A	N/A	N/A	
Distance from obstructions not on roof (meters)	N/A	N/A	N/A	
Distance from trees (meters)	N/A	N/A	N/A	
Distance to furnace or incinerator flue (meters)	N/A	N/A	N/A	
Distance between collocated monitors (meters)	N/A	N/A	N/A	
Unrestricted airflow (degrees)	360°	360°	360°	

Probe material for reactive gases (e.g. Pyrex, stainless steel, Teflon)	N/A	N/A	N/A	
Residence time for reactive gases (seconds)	N/A	N/A	N/A	
Will there be changes within the next 18 months? (Y/N)	No	No	No	
Is it suitable for comparison against the annual PM2.5? (Y/N)	N/A	N/A	N/A	
Frequency of flow rate verification for manual PM samplers	N/A	N/A	N/A	
Frequency of flow rate verification for automated PM analyzers	N/A	N/A	N/A	
Frequency of one-point QC check for gaseous instruments	N/A	N/A	N/A	
Last Annual Performance Evaluation for gaseous parameters (MM/DD/YYYY)	N/A	N/A	N/A	
Last two semi-annual flow rate audits for PM monitors (MM/DD/YYYY, MM/DD/YYYY)	N/A	N/A	N/A	

**Banning Airport
Site Photos**



Looking North from the probe.



Looking East from the probe.



Looking South from the probe.



Looking West from the probe.

**Banning Airport
Site Photos (Cont.)**



Looking at the probe from the North.



Looking at the probe from the East.



Looking at the probe from the South.



Looking at the probe from the West.