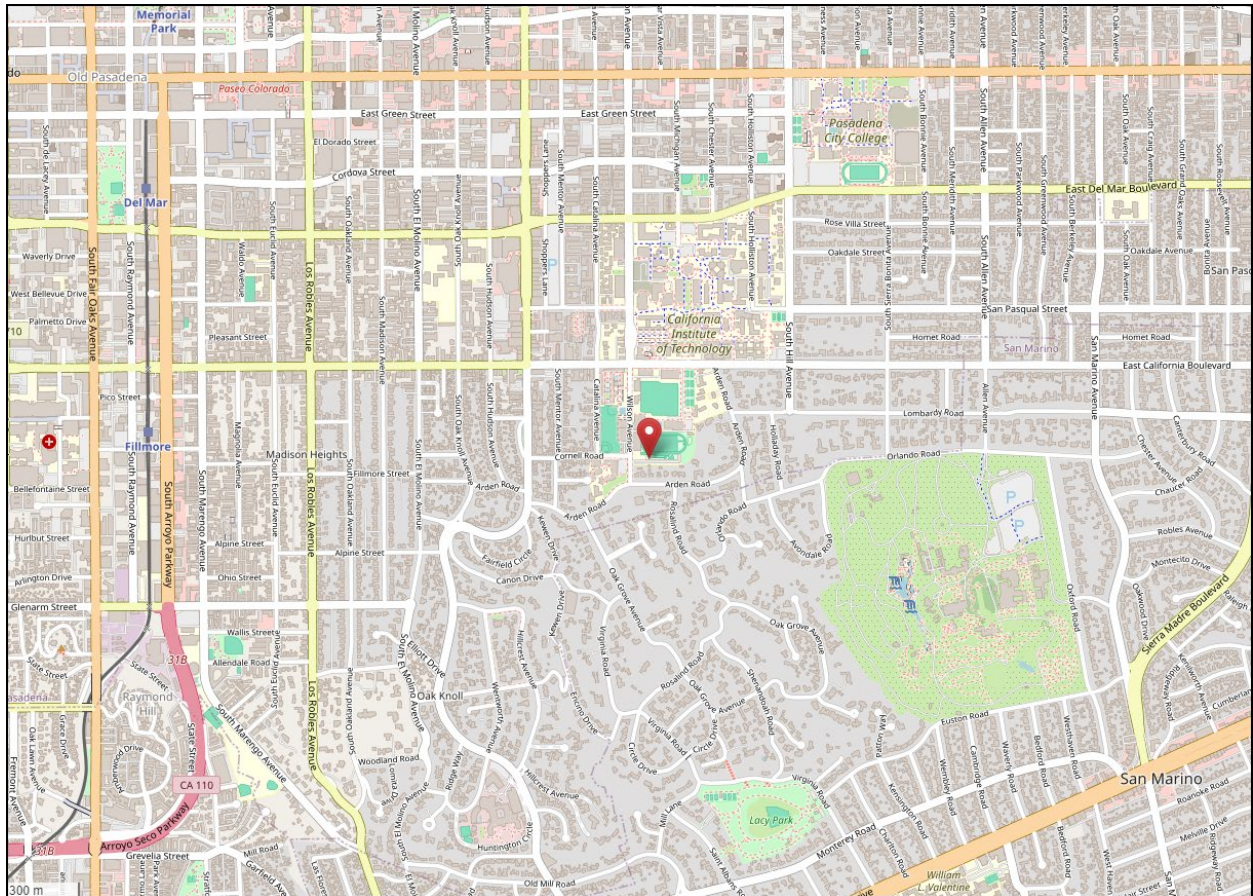
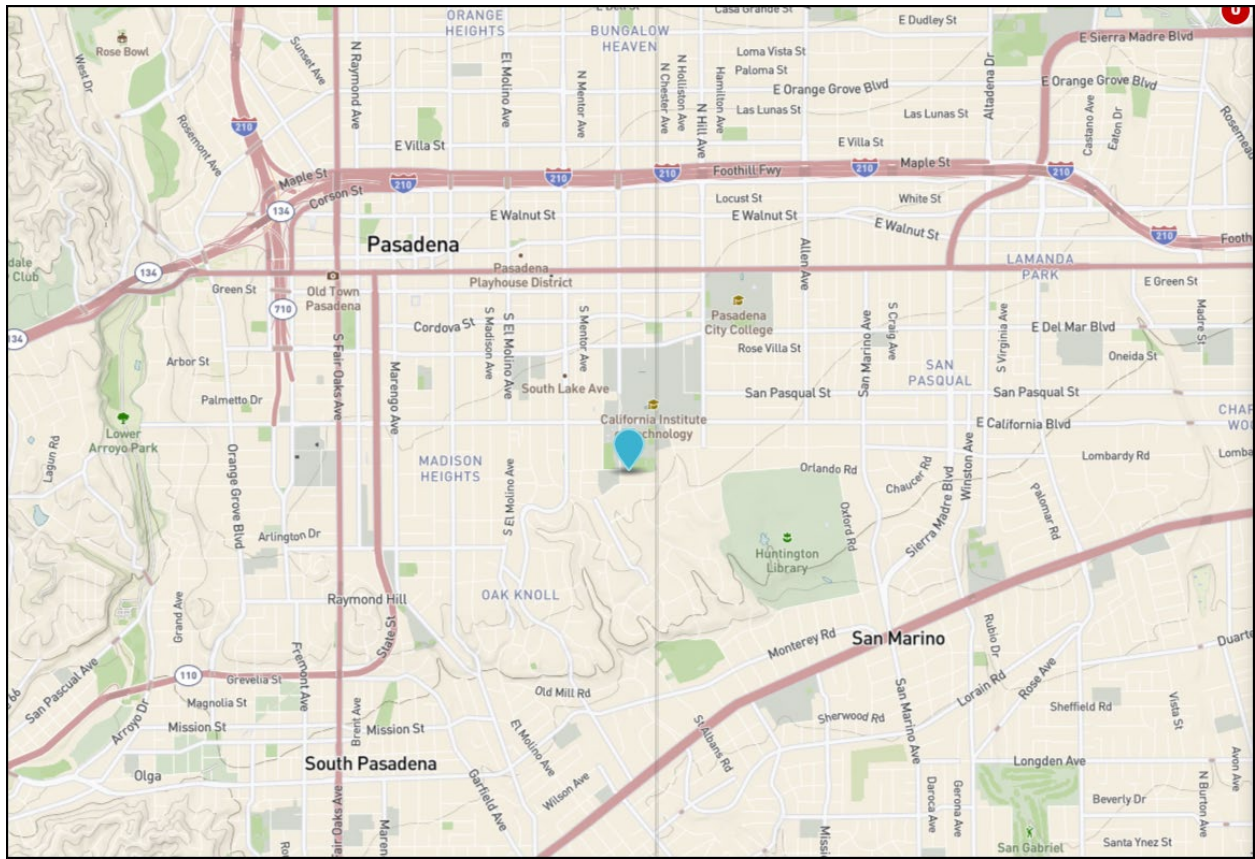


South Coast AQMD
Site Survey Report for Pasadena
Last updated: May 7, 2024



AQS ID	ARB Number	Site Start Date	Reporting Agency and Agency Code			
060372005	70088	04/1982	South Coast AQMD (0972)			
Site Address		County	Air Basin	Latitude	Longitude	Elevation
752 S. Wilson Avenue Pasadena, CA 91702		Los Angeles	South Coast	34.132620	-118.127200	226



Detailed Site Information

Local site name	Pasadena			
AQS ID	060372005			
GPS coordinates (decimal degrees)	Latitude: 34.132620, Longitude: -118.127200			
Street Address	752 S. Wilson Avenue, Pasadena, CA 91702			
County	Los Angeles			
Distance to roadways (meters)	66			
Traffic count (AADT, year)	2021 / 2022			
Groundcover (e.g. asphalt, dirt, sand)	Grass			
Representative statistical area name (i.e. MSA, CBSA, other)	31080-Los Angeles-Long Beach-Anaheim, MSA			
Pollutant, POC	Carbon Monoxide, 1	Nitrogen Dioxide, 1	Ozone, 1	24 Hour PM2.5, 1
Primary / QA Collocated / Other	N/A	N/A	N/A	Primary
Parameter code	42101	42602	44201	88101
Basic monitoring objective(s)	NAAQS	NAAQS	NAAQS	NAAQS
Site type(s)	Population Exposure	Population Exposure	Population Exposure	Population Exposure
Monitor (type)	SLAMS	SLAMS	SLAMS	SLAMS
Network affiliation	N/A	N/A	N/A	N/A
Instrument manufacturer and model	Horiba APMA 370	Teledyne T200	Teledyne T400	Partisol Plus 2025i PM2.5
Method code	158	099	087	145
FRM/FEM/ARM/ other	FRM	FRM	FEM	FRM
Collecting Agency	South Coast AQMD	South Coast AQMD	South Coast AQMD	South Coast AQMD
Analytical Lab (i.e., weigh lab, toxics lab, other)	N/A	N/A	N/A	South Coast AQMD
Reporting Agency	South Coast AQMD	South Coast AQMD	South Coast AQMD	South Coast AQMD
Spatial scale (e.g. micro, neighborhood)	Neighborhood	Neighborhood	Neighborhood	Neighborhood
Monitoring start date (MM/DD/YYYY)	04/1982	04/1982	04/1982	04/1982
Current sampling frequency (e.g.1:3, continuous)	Continuous	Continuous	Continuous	1:3
Calculated sampling frequency (e.g. 1:3/1:1)	N/A	N/A	N/A	1:3
Sampling season (MM/DD-MM/DD)	01/01-12/31	01/01-12/31	01/01-12/31	01/01-12/31
Probe height (meters)	4.4	4.4	4.4	3.1
Distance from supporting structure (meters)	N/A	N/A	N/A	N/A
Distance from obstructions on roof (meters)	N/A	N/A	N/A	N/A

Distance from obstructions not on roof (meters)	N/A	N/A	N/A	14.3 m SE Bearing Height 10.4 (Oak)
Distance from trees (meters)	9.1m W 11.1m H 14m E 8.5m H	9.1m W 11.1m H 14m E 8.5m H	9.1m W 11.1m H 14m E 8.5m H	9.1m W 11.1m H 14m E 8.5m H
Distance to furnace or incinerator flue (meters)	N/A	N/A	N/A	N/A
Distance between collocated monitors (meters)	N/A	N/A	N/A	N/A
Unrestricted airflow (degrees)	360°	360°	360°	360°
Probe material for reactive gases (e.g. Pyrex, stainless steel, Teflon)	Teflon	Teflon	Teflon	N/A
Residence time for reactive gases (seconds)	8.9	10.7	9.3	N/A
Will there be changes within the next 18 months? (Y/N)	No	No	No	No
Is it suitable for comparison against the annual PM _{2.5} ? (Y/N)	N/A	N/A	N/A	Yes
Frequency of flow rate verification for manual PM samplers	N/A	N/A	N/A	Monthly
Frequency of flow rate verification for automated PM analyzers	N/A	N/A	N/A	N/A
Frequency of one-point QC check for gaseous instruments	Nightly	Nightly	Nightly	N/A
Last Annual Performance Evaluation for gaseous parameters (MM/DD/YYYY)	05/04/2023	05/04/2023	05/04/2023	N/A
Last two semi-annual flow rate audits for PM monitors (MM/DD/YYYY, MM/DD/YYYY)	N/A	N/A	N/A	04/28/2023 10/05/2023

Pollutant, POC	WS & D, 1/1	RH/T, 1/1		
Primary / QA Collocated / Other	N/A	N/A		
Parameter code	61101/61102	62201/62101		
Basic monitoring objective(s)	Research	Research		
Site type(s)	Meteorological	Meteorological		
Monitor (type)	SLAMS	SLAMS		
Network affiliation	N/A	N/A		
Instrument manufacturer and model	RM Young 05305VP	Rotronic HC2-S3		
Method code	065/065	063/063		
FRM/FEM/ARM/ other	N/A	N/A		
Collecting Agency	South Coast AQMD	South Coast AQMD		
Analytical Lab (i.e., weigh lab, toxics lab, other)	N/A	N/A		
Reporting Agency	South Coast AQMD	South Coast AQMD		
Spatial scale (e.g. micro, neighborhood)	Neighborhood/Middle	Neighborhood/Middle		
Monitoring start date (MM/DD/YYYY)	04/1982	04/1982		
Current sampling frequency (e.g.1:3, continuous)	Continuous	Continuous		
Calculated sampling frequency (e.g. 1:3/1:1)	N/A	N/A		
Sampling season (MM/DD-MM/DD)	01/01-12/31	01/01-12/31		
Probe height (meters)	10	3.7		
Distance from supporting structure (meters)	N/A	N/A		
Distance from obstructions on roof (meters)	N/A	N/A		
Distance from obstructions not on roof (meters)	N/A	N/A		
Distance from trees (meters)	10 m NW Bearing Height 19.2 (Palm)	10 m NW Bearing Height 19.2 (Palm)		
Distance to furnace or incinerator flue (meters)	N/A	N/A		
Distance between collocated monitors (meters)	N/A	N/A		
Unrestricted airflow (degrees)	360°	360°		

Probe material for reactive gases (e.g. Pyrex, stainless steel, Teflon)	N/A	N/A		
Residence time for reactive gases (seconds)	N/A	N/A		
Will there be changes within the next 18 months? (Y/N)	No	No		
Is it suitable for comparison against the annual PM2.5? (Y/N)	N/A	N/A		
Frequency of flow rate verification for manual PM samplers	N/A	N/A		
Frequency of flow rate verification for automated PM analyzers	N/A	N/A		
Frequency of one-point QC check for gaseous instruments	N/A	N/A		
Last Annual Performance Evaluation for gaseous parameters (MM/DD/YYYY)	N/A	N/A		
Last two semi-annual flow rate audits for PM monitors (MM/DD/YYYY, MM/DD/YYYY)	N/A	N/A		

Pasadena Site Photos



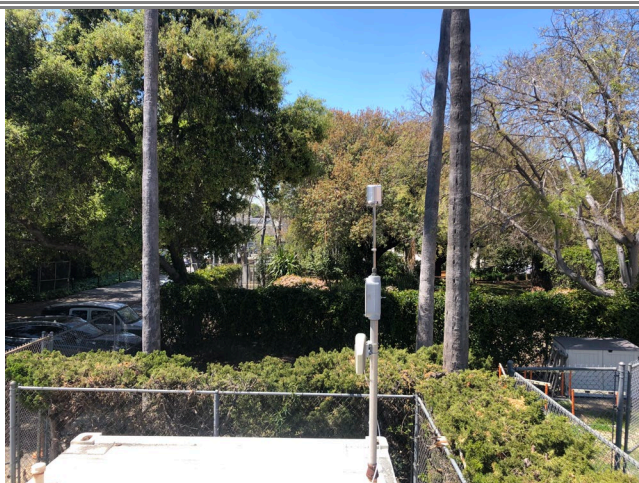
Looking North from the probe.



Looking East from the probe.



Looking South from the probe.



Looking West from the probe.

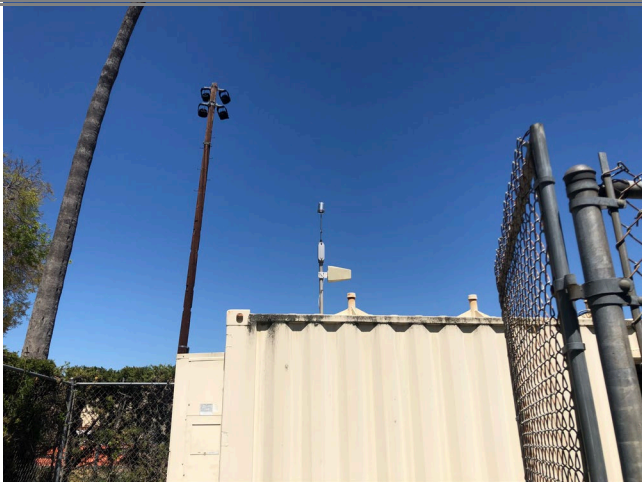
**Pasadena
Site Photos (Cont.)**



Looking at the probe from the North.



Looking at the probe from the East.



Looking at the probe from the South.



Looking at the probe from the West.