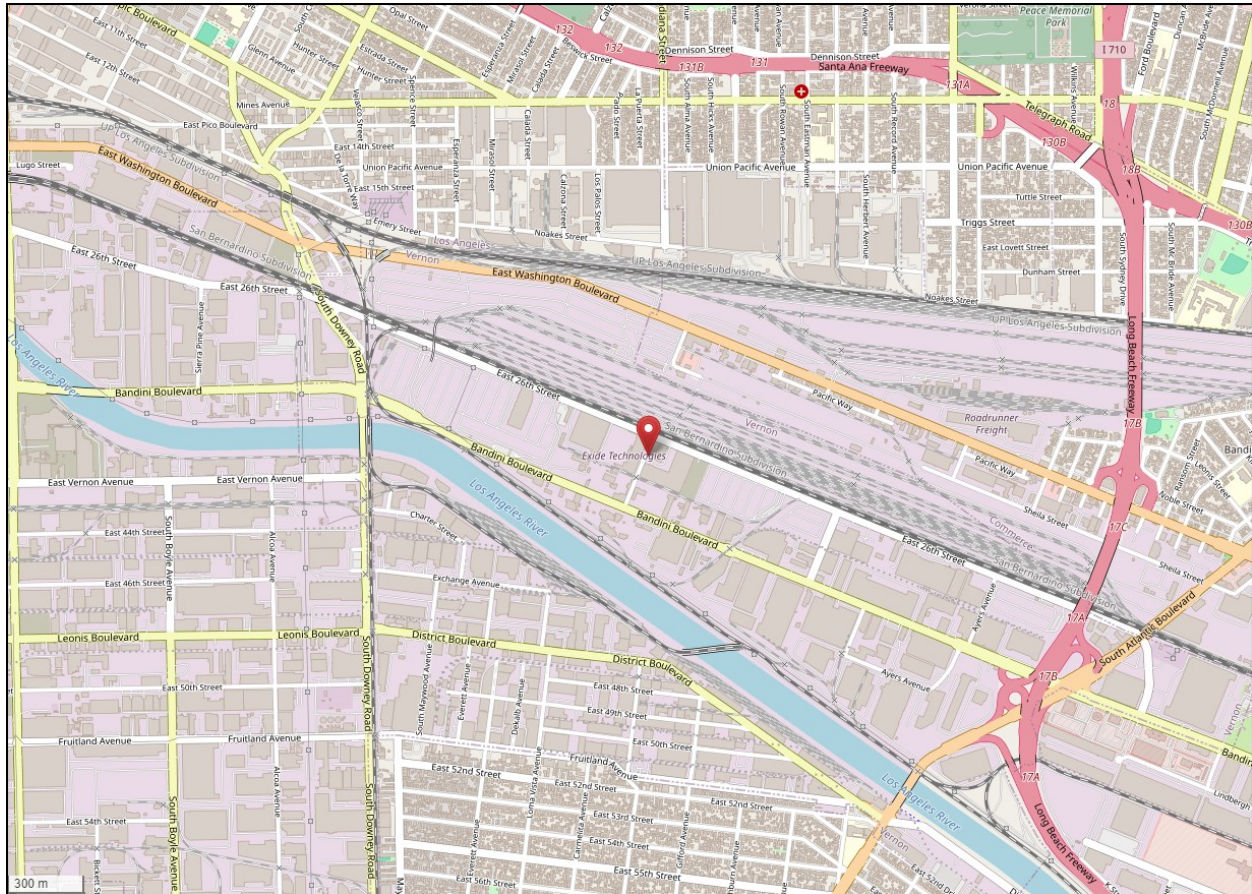
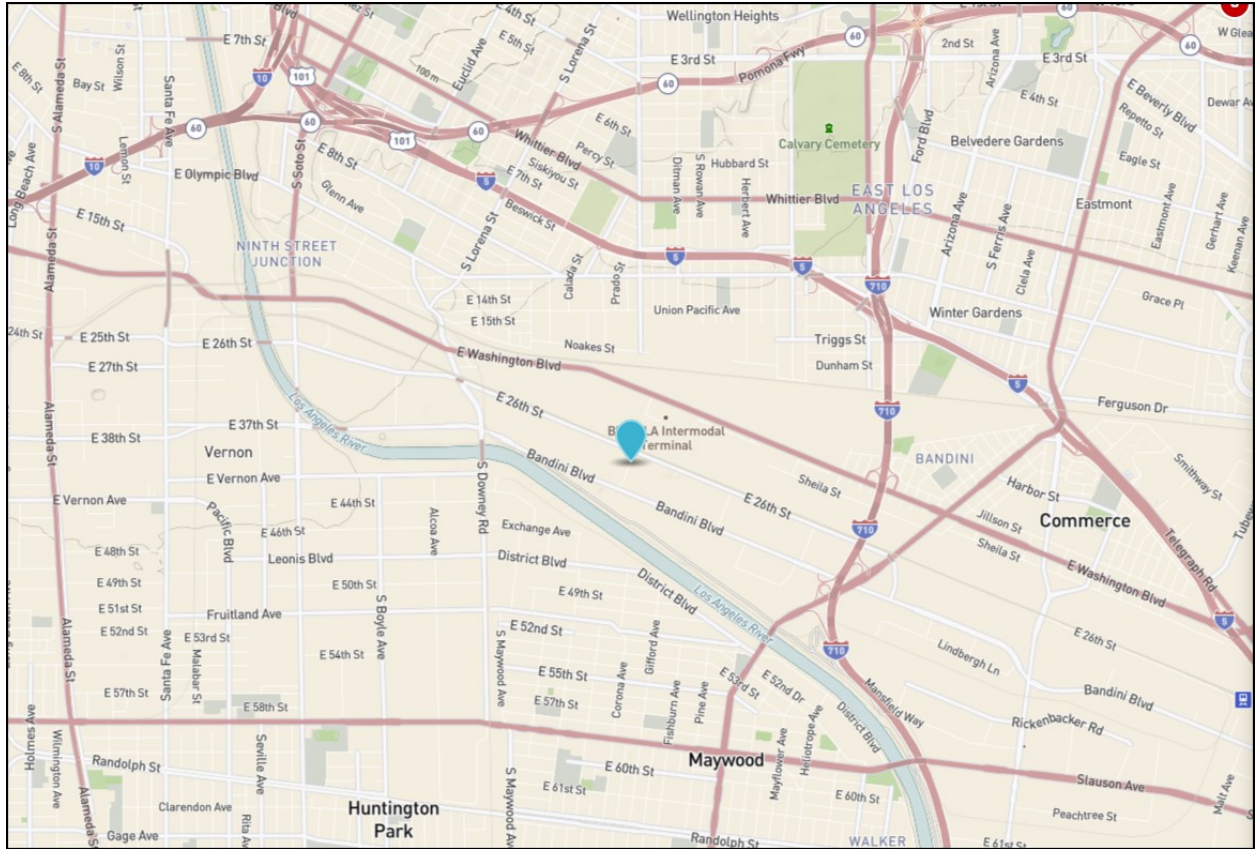


South Coast AQMD
Site Survey Report for Rehrig (Exide)
Last updated: May 16, 2025



AQS ID	ARB Number	Site Start Date	Reporting Agency and Agency Code
060371405	70044	11/14/2007	South Coast AQMD (0972)

Site Address	County	Air Basin	Latitude	Longitude	Elevation
4010 E. 26 th Street Vernon, CA 90058	Los Angeles	South Coast	34.006421	-118.192941	53 m



Detailed Site Information

Local site name	Rehrig (Exide)			
AQS ID	060371405			
GPS coordinates (decimal degrees)	Latitude: 34.006421, Longitude: -118.192941			
Street Address	4010 E. 26 th Street, Vernon, CA 90058			
County	Los Angeles			
Distance to roadways (meters)	7 (Indiana St.)			
Traffic count (AADT, year)	281 / 2022			
Groundcover (e.g. asphalt, dirt, sand)	Asphalt			
Representative statistical area name (i.e. MSA, CBSA, other)	31080-Los Angeles-Long Beach-Anaheim MSA			
Pollutant, POC	Lead, 2	Lead, 3		
Primary / QA Collocated / Other	Primary	QA Collocated		
Parameter code	14129	14129		
Basic monitoring objective(s)	NAAQS	NAAQS		
Site type(s)	Source Oriented	Source Oriented		
Monitor (type)	SLAMS	SLAMS		
Network affiliation	N/A	N/A		
Instrument manufacturer and model	Tisch TSP Hi-Vol+	Tisch TSP Hi- Vol+BL		
Method code	261	261		
FRM/FEM/ARM/ other	FRM	FRM		
Collecting Agency	South Coast AQMD	South Coast AQMD		
Analytical Lab (i.e., weigh lab, toxics lab, other)	South Coast AQMD	South Coast AQMD		
Reporting Agency	South Coast AQMD	South Coast AQMD		
Spatial scale (e.g. micro, neighborhood)	Micro	Micro		
Monitoring start date (MM/DD/YYYY)	11/2007	11/2007		
Current sampling frequency (e.g. 1:3, continuous)	1:6	1:12		
Calculated sampling frequency (e.g. 1:3/1:1)	1:6	1:12		
Sampling season (MM/DD-MM/DD)	01/01-12/31	01/01-12/31		
Probe height (meters)	2.2	2.2		
Distance from supporting structure (meters)	N/A	N/A		
Distance from obstructions on roof (meters)	N/A	N/A		

Distance from obstructions not on roof (meters)	N/A	N/A		
Distance from trees (meters)	N/A	N/A		
Distance to furnace or incinerator flue (meters)	N/A	N/A		
Distance between collocated monitors (meters)	3.2	3.2		
Unrestricted airflow (degrees)	360°	360°		
Probe material for reactive gases (e.g. Pyrex, stainless steel, Teflon)	N/A	N/A		
Residence time for reactive gases (seconds)	N/A	N/A		
Will there be changes within the next 18 months? (Y/N)	No	No		
Is it suitable for comparison against the annual PM2.5? (Y/N)	N/A	N/A		
Frequency of flow rate verification for manual PM samplers	Monthly	Monthly		
Frequency of flow rate verification for automated PM analyzers	N/A	N/A		
Frequency of one-point QC check for gaseous instruments	N/A	N/A		
Last Annual Performance Evaluation for gaseous parameters (MM/DD/YYYY)	N/A	N/A		
Last two semi-annual flow rate audits for PM monitors (MM/DD/YYYY, MM/DD/YYYY)	03/14/2024 08/20/2024	03/14/2024 08/20/2024		

**Exide - Rehrig
Site Photos**



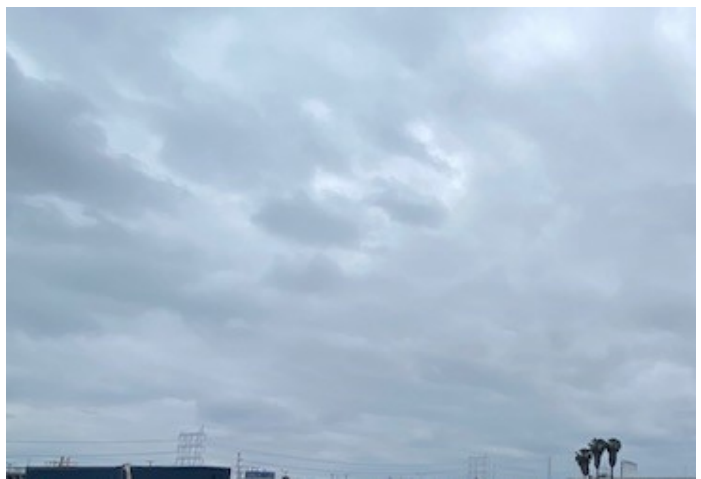
Looking North from the probe.



Looking East from the probe.



Looking South from the probe.



Looking West toward the probe

**Exide - Rehrig
Site Photos (Cont.)**



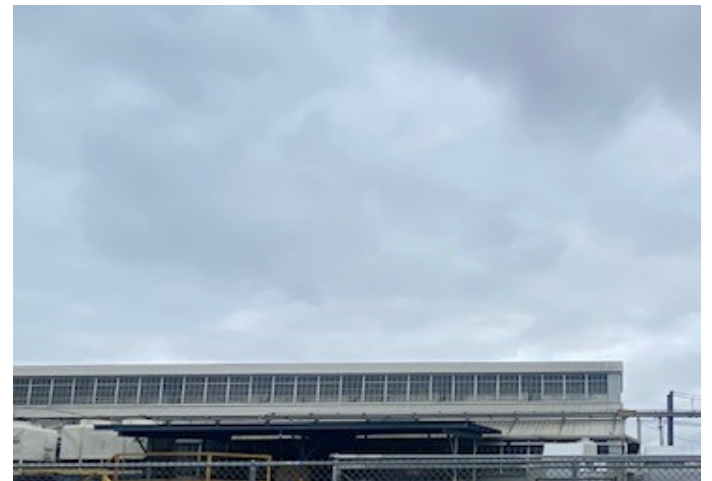
Looking at the probe from the North.



Looking at the probe from the East.



Looking at the probe from the South.



Looking at the probe from the West.