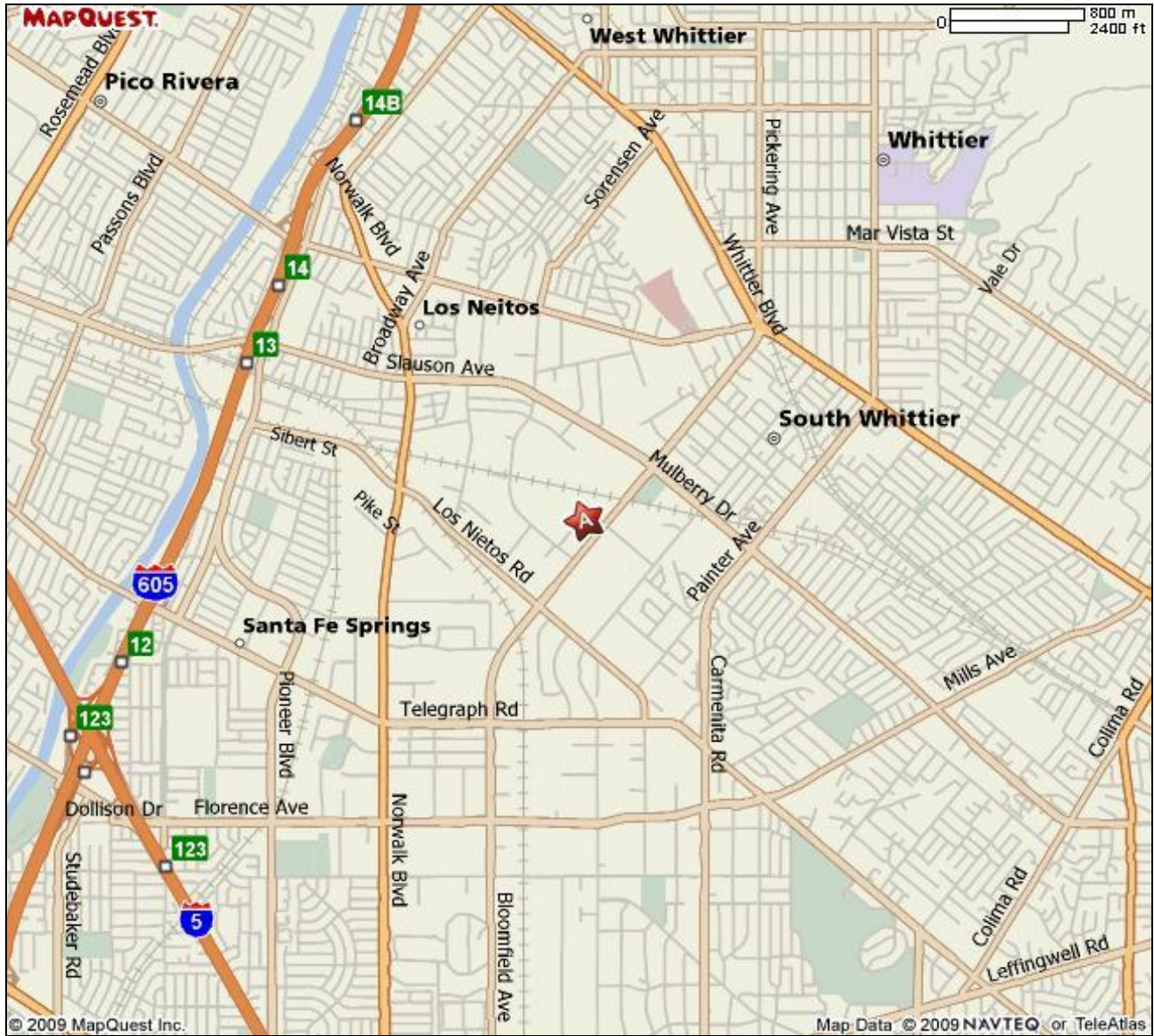


# South Coast AQMD Site Survey Report for Uddeholm (Trojan Battery)

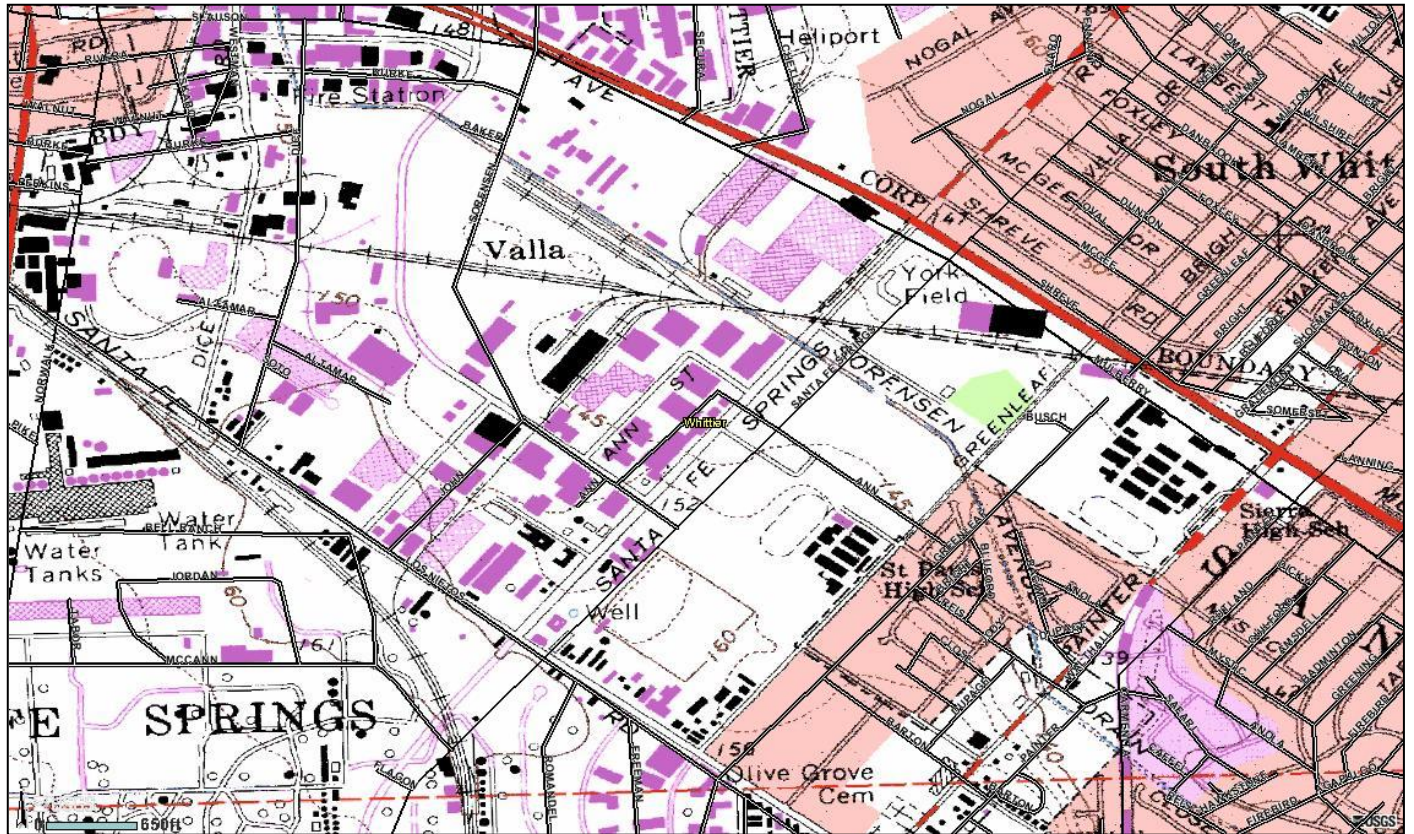
Last updated: May 19, 2022



AQS ID	ARB Number	Site Start Date	Reporting Agency and Agency Code
060371403	70045	11/26/1992	South Coast AQMD (0972)

Site Address	County	Air Basin	Latitude	Longitude	Elevation
9440 Ann Street Santa Fe Springs, CA 90670	Los Angeles	South Coast	33° 57' 18"N	118° 03' 21"W	44 m





## Detailed Site Information

Local site name	Uddeholm (Trojan Battery)			
AQS ID	060371403			
GPS coordinates (decimal degrees)	Latitude: 33° 57' 18" Longitude: 118° 03' 21'			
Street Address	9440 Ann Street, Santa Fe Springs, CA 90670			
County	Los Angeles			
Distance to roadways (meters)	60			
Traffic count (AADT, year)	30,000 / 2012			
Groundcover (e.g. asphalt, dirt, sand)	Asphalt			
Representative statistical area name (i.e. MSA, CBSA, other)	31080-Los Angeles-Long Beach-Anaheim MSA			
Pollutant, POC	Lead, 1			
Primary / QA Collocated / Other	Primary			
Parameter code	14129			
Basic monitoring objective(s)	NAAQS			
Site type(s)	Source Oriented			
Monitor (type)	SLAMS			
Network affiliation	N/A			
Instrument manufacturer and model	Tisch+ TSP			
Method code	110			
FRM/FEM/ARM/ other	FRM			
Collecting Agency	South Coast AQMD			
Analytical Lab (i.e., weigh lab, toxics lab, other)	South Coast AQMD			
Reporting Agency	South Coast AQMD			
Spatial scale (e.g. micro, neighborhood)	Micro			
Monitoring start date (MM/DD/YYYY)	11/26/1992			
Current sampling frequency (e.g.1:3, continuous)	1:6			
Calculated sampling frequency (e.g. 1:3/1:1)	1:6			
Sampling season (MM/DD-MM/DD)	01/01-12/31			
Probe height (meters)	3.7			
Distance from supporting structure (meters)	1.2			
Distance from obstructions on roof (meters)	N/A			

Distance from obstructions not on roof (meters)	N/A			
Distance from trees (meters)	N/A			
Distance to furnace or incinerator flue (meters)	N/A			
Distance between collocated monitors (meters)	N/A			
Unrestricted airflow (degrees)	360°			
Probe material for reactive gases (e.g. Pyrex, stainless steel, Teflon)	N/A			
Residence time for reactive gases (seconds)	N/A			
Will there be changes within the next 18 months? (Y/N)	No			
Is it suitable for comparison against the annual PM2.5? (Y/N)	N/A			
Frequency of flow rate verification for manual PM samplers	Monthly			
Frequency of flow rate verification for automated PM analyzers	N/A			
Frequency of one-point QC check for gaseous instruments	N/A			
Last Annual Performance Evaluation for gaseous parameters (MM/DD/YYYY)	N/A			
Last two semi-annual flow rate audits for PM monitors (MM/DD/YYYY, MM/DD/YYYY)	03/24/2021 08/31/2021			



**Uddeholm (Trojan Battery)  
Site Photos**



**Looking North from the probe**



**Looking East from the probe.**



**Looking South toward the probe.**



**Looking West from the probe**