

Sunshine Canyon Landfill Update

March 18, 2016

South Coast Air Quality Management District
Stationary Source Committee

Sunshine Canyon Landfill Update Overview

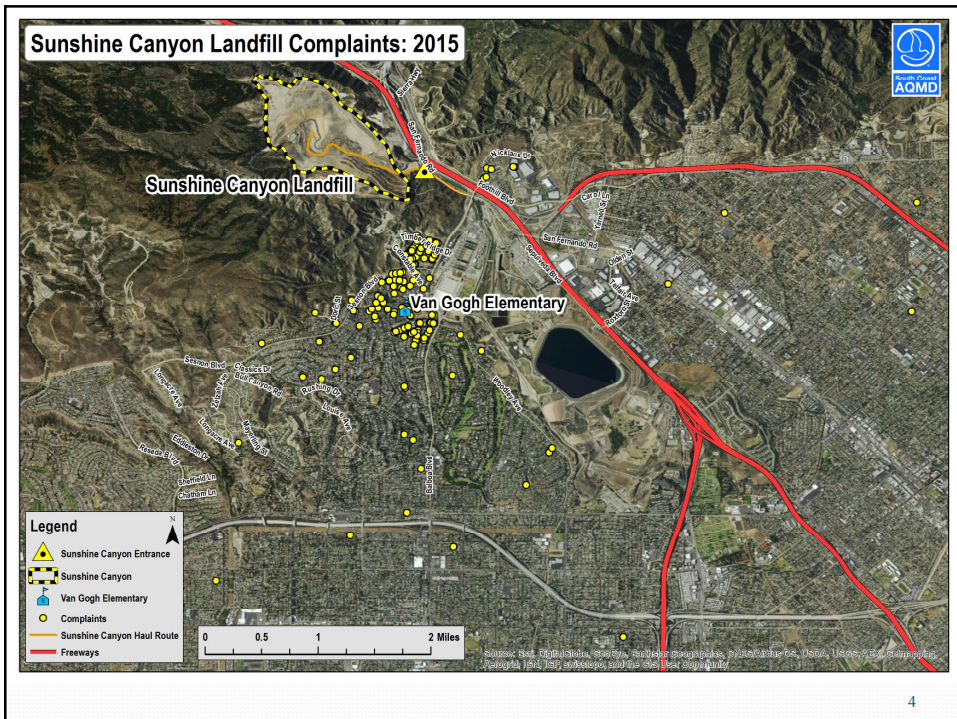
- Compliance Activities
- Recent Landfill Improvements
- Annual Emissions Reporting
- 2012-13 Air Quality Monitoring Study
- Potential Health Effects
- Next Steps



Sunshine Canyon Landfill

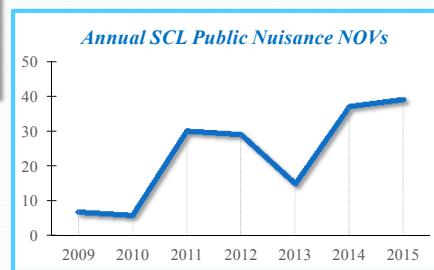
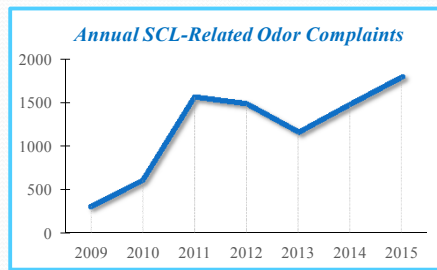
- Opened in 1958
- Operated within both the City and County of Los Angeles
- Owned and operated by Browning-Ferris Industries (Allied Waste/Republic)
- Sunshine Canyon Landfill has a gas collection system and control equipment

3



4

Sunshine Canyon Landfill Odor Complaints



5

SCAQMD Compliance Activities

- Responded to and Investigated Odor Complaints
- Conducted Regular Unannounced Facility Inspections
- Took Enforcement Actions (NOVs)
- Petitioned with the Hearing Board for an Order for Abatement in 2009 (Order Modified 4 times through end of 2013)
- Formed a Sunshine Canyon Landfill Inter-Agency Task Force consisting of the following agencies to coordinate efforts to reduce/control odors:
 - LA County (Departments of Public Works, Regional Planning, Public Health & County Counsel's Office)
 - LA City (Departments of City Planning, Building & Safety and City Attorney's Office)
 - Sunshine Canyon Landfill Local Enforcement Agency (SCL-LEA) of CalRecycle



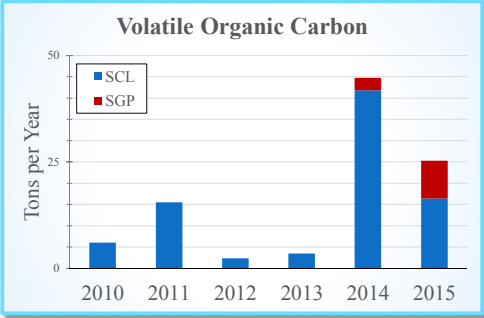
Sunshine Canyon Landfill Recent Improvements

- Landfill Gas Collection System
 - Wells and piping
- Alternative Daily Cover Pilot Project
 - Replaces soil cover
- Landfill Gas Control System
 - Improved flares
- Sunshine Gas Producers
 - 24 MW Landfill Gas-to-Energy Project
- 2015 Consultant Reports
 - Recommendations being pursued

7

Reported Emissions

- Sunshine Canyon Landfill (SCL) and Sunshine Gas Producers (SGP) report emissions annually through AER
 - Emissions currently undergoing audit
 - Calculation errors found in previous years
- Landfill surface emissions first reported in 2014
 - 2014 gas collection efficiency =75% (default)
 - 2015 gas collection efficiency =88% (onsite data)



Volatile Organic Carbon

Year	SCL (Tons per Year)	SGP (Tons per Year)
2010	~8	0
2011	~18	0
2012	~2	0
2013	~5	0
2014	~40	~5
2015	~18	~7

8

2012-13 Air Monitoring Study

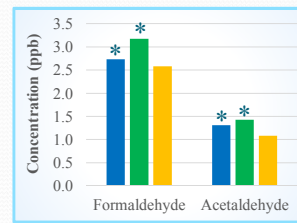
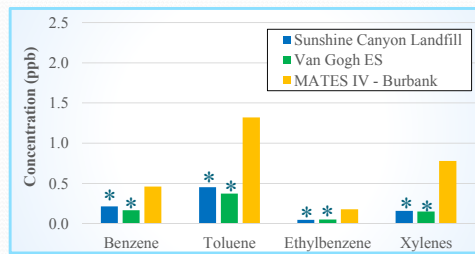
➤ **Objective:** to estimate long-term air toxic exposure in the community, and compare to levels at the landfill and in the Southern California region.

- SCAQMD Hearing Board orders the study (2011)
- BFI hired consultants to conduct the study in 2011-2013
 - Similar approach to MATES IV
 - One year+ of sampling at Van Gogh ES and at the landfill
 - Data quality concerns raised in three separate reviews



2012-13 Air Monitoring Study Results

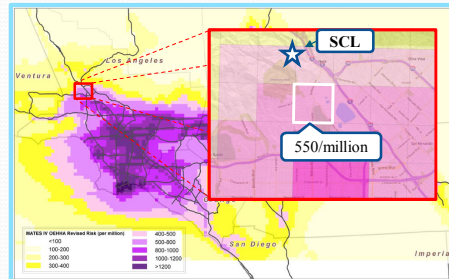
- Measured levels at the landfill are typically higher than at the school*
- Most air toxics too low to be measured, or not higher than MATES
 - Formaldehyde and acetaldehyde are the only exceptions
- Results generally consistent with other monitoring efforts
 - City of LA PM monitoring
 - Rule 1150.1



*Data quality review is continuing, and results will be updated

Potential Health Impacts from Sunshine Canyon Landfill Gas

- Reported emissions levels have been below screening levels requiring a detailed facility-specific Health Risk Assessment
- Measured air toxics levels generally no worse than typically seen in SCAQMD region
- Cancer risk estimates for area near SCL below Basin average
- Significant ongoing odor issue
 - Strong unpleasant odors can evoke physiological responses, e.g. headaches, nausea



11

Next Steps

- Continue to assess quality of 2012-13 toxics study data
- Continue to audit emissions reports
- Work with the City of LA on upcoming toxics study
- Continue complaint response and enforcement presence
- Hold a Town Hall meeting in April 2016
- Disseminate fact sheets and information on SCAQMD website
- Reconvene the Sunshine Canyon Landfill Inter-Agency Task Force previously formed by SCAQMD to coordinate actions to reduce/control odors

12