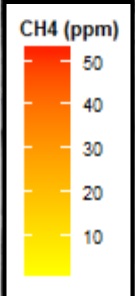
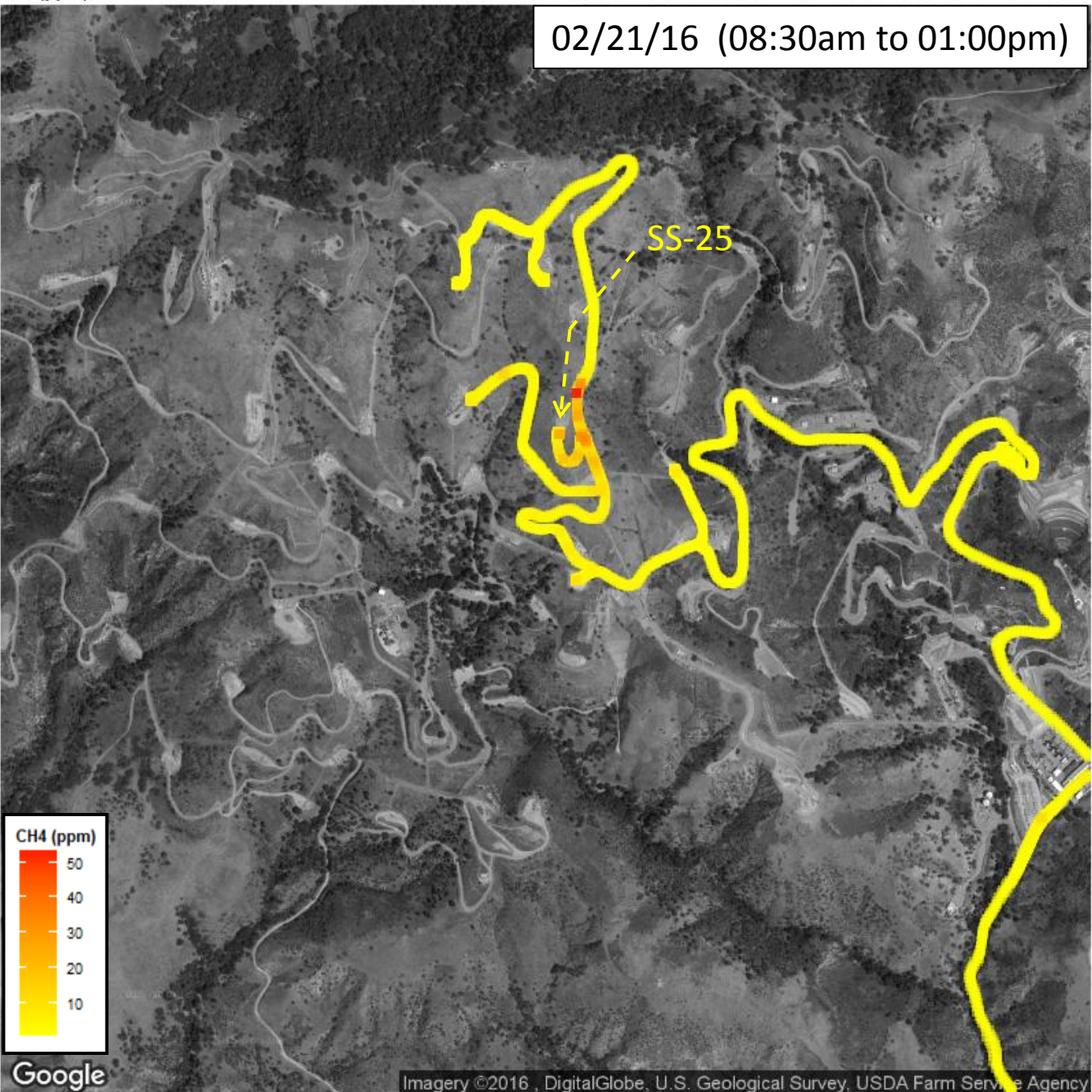


CH4 (ppm)

02/21/16 (08:30am to 01:00pm)

Latitude
34.320
34.315
34.310
34.305



Google

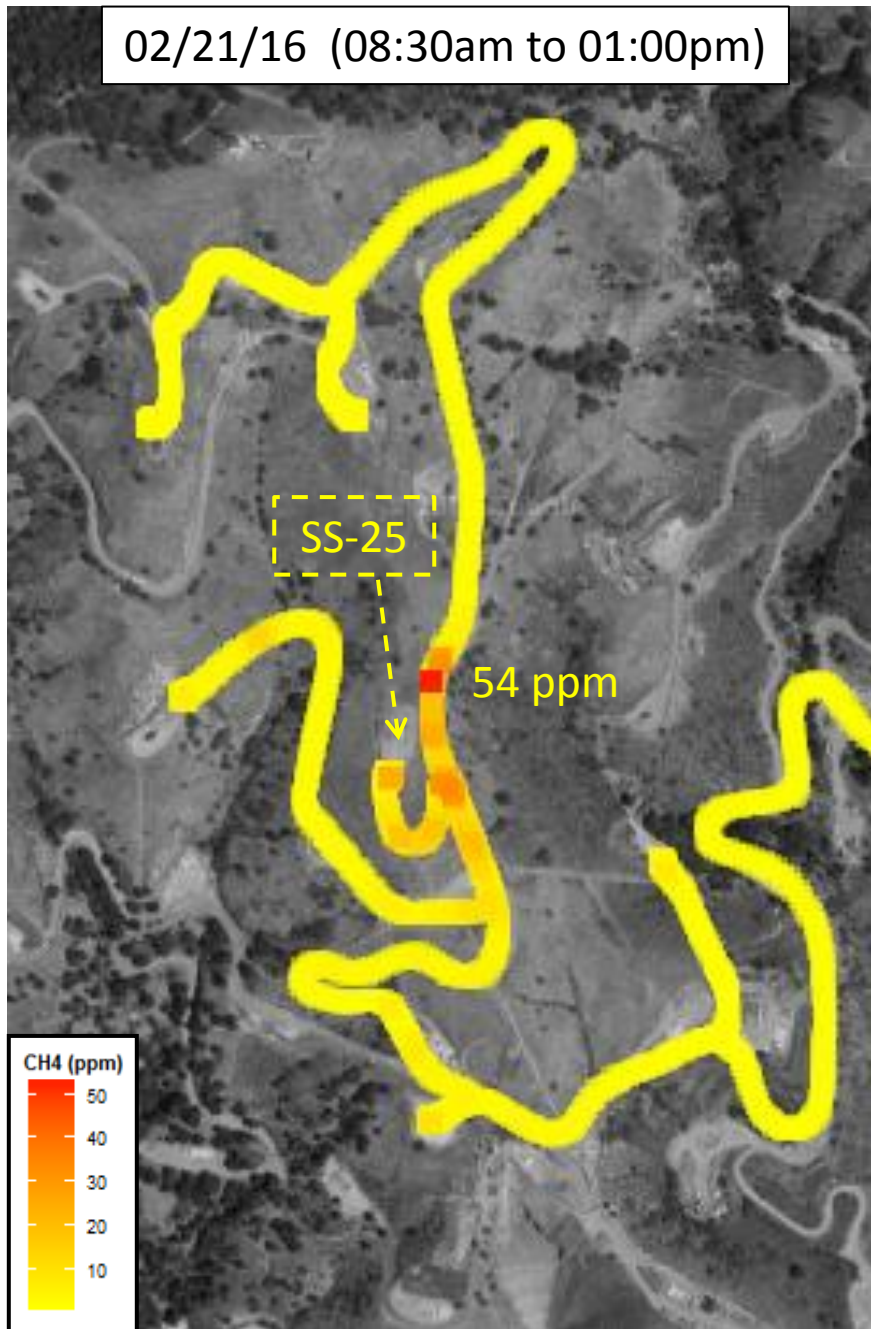
Imagery ©2016, DigitalGlobe, U.S. Geological Survey, USDA Farm Service Agency

-118.57

Longitude

-118.56

02/21/16 (08:30am to 01:00pm)



- Elevated methane concentrations (up to 54 ppm) were measured ~150-200 ft E of SS-25, probably from multiple naturally occurring holes on the side of the hill
- Methane levels immediately W and NW of well SS-25 have been decreasing during the past few days
- SCAQMD inspectors used a portable TVA-1000 monitor to confirm these findings and complement the LICOR data
- Videos were taken with FLIR cameras to identify the presence of natural gas