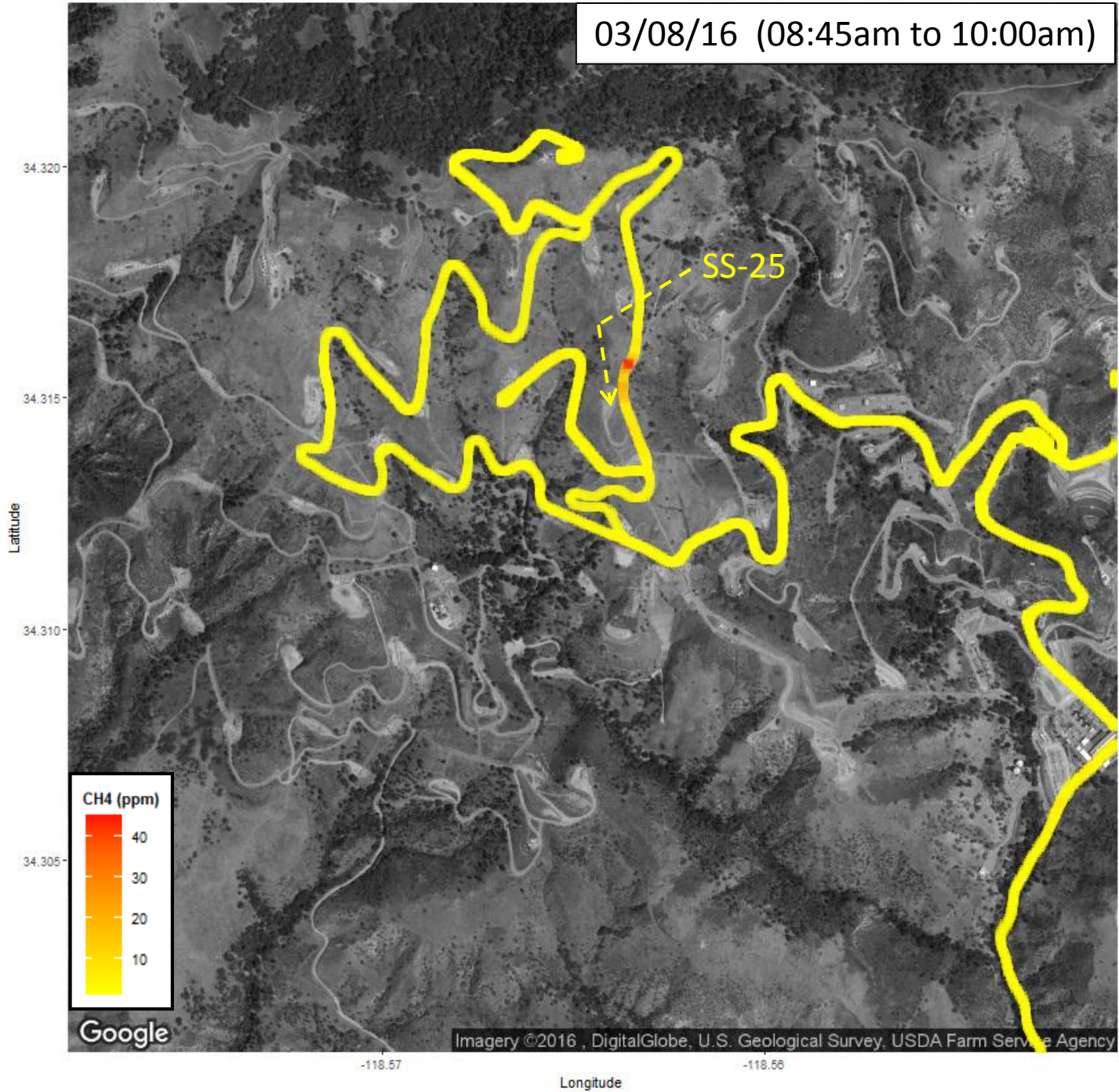
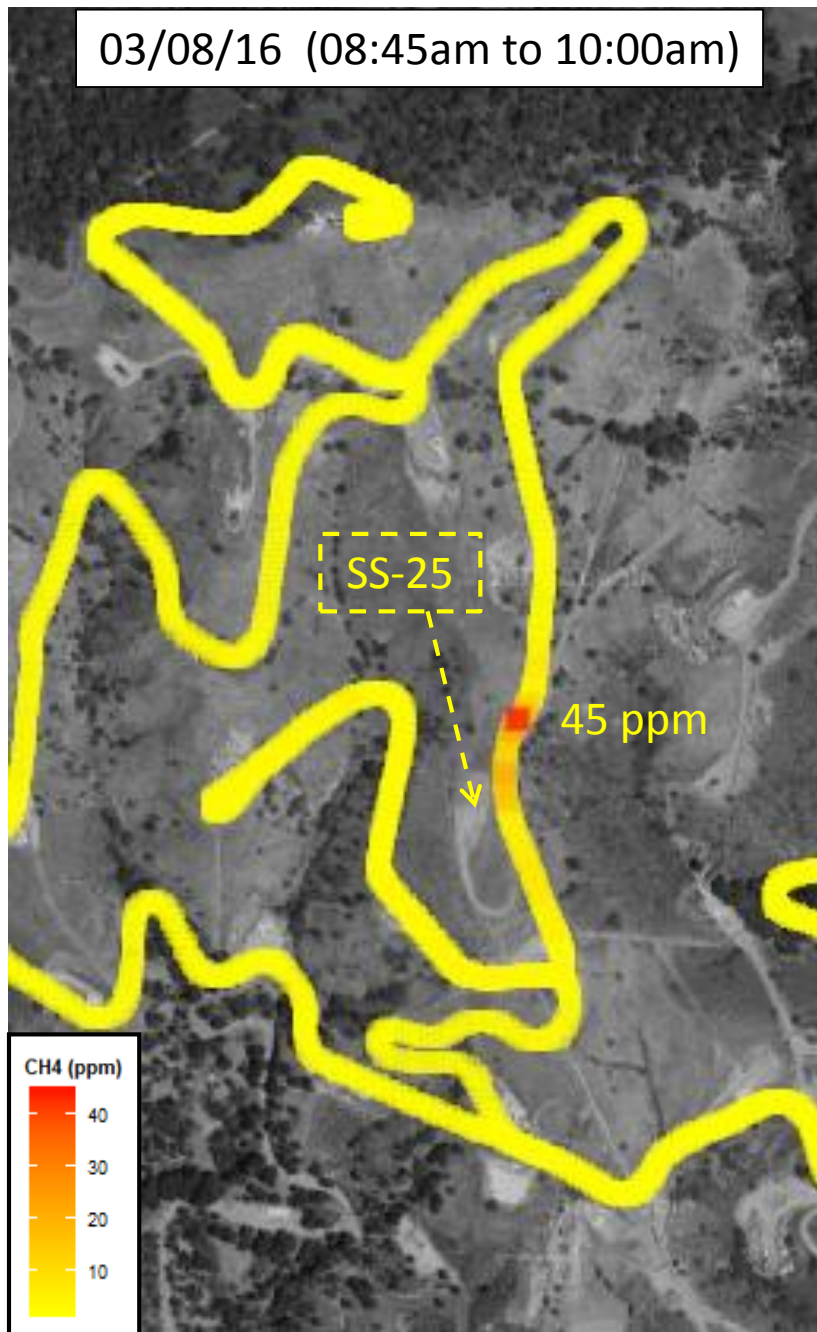


CH4 (ppm)

03/08/16 (08:45am to 10:00am)



03/08/16 (08:45am to 10:00am)



- Methane concentrations ~150-200 ft E of SS-25 are still elevated (up to 45 ppm)
- Methane levels immediately W and NW of well SS-25 have been decreasing but are still higher than background
- SCAQMD inspectors used a portable TVA-1000 monitor to confirm these findings and complement the LICOR data
- Videos were taken with FLIR cameras to identify the presence of natural gas