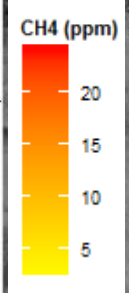
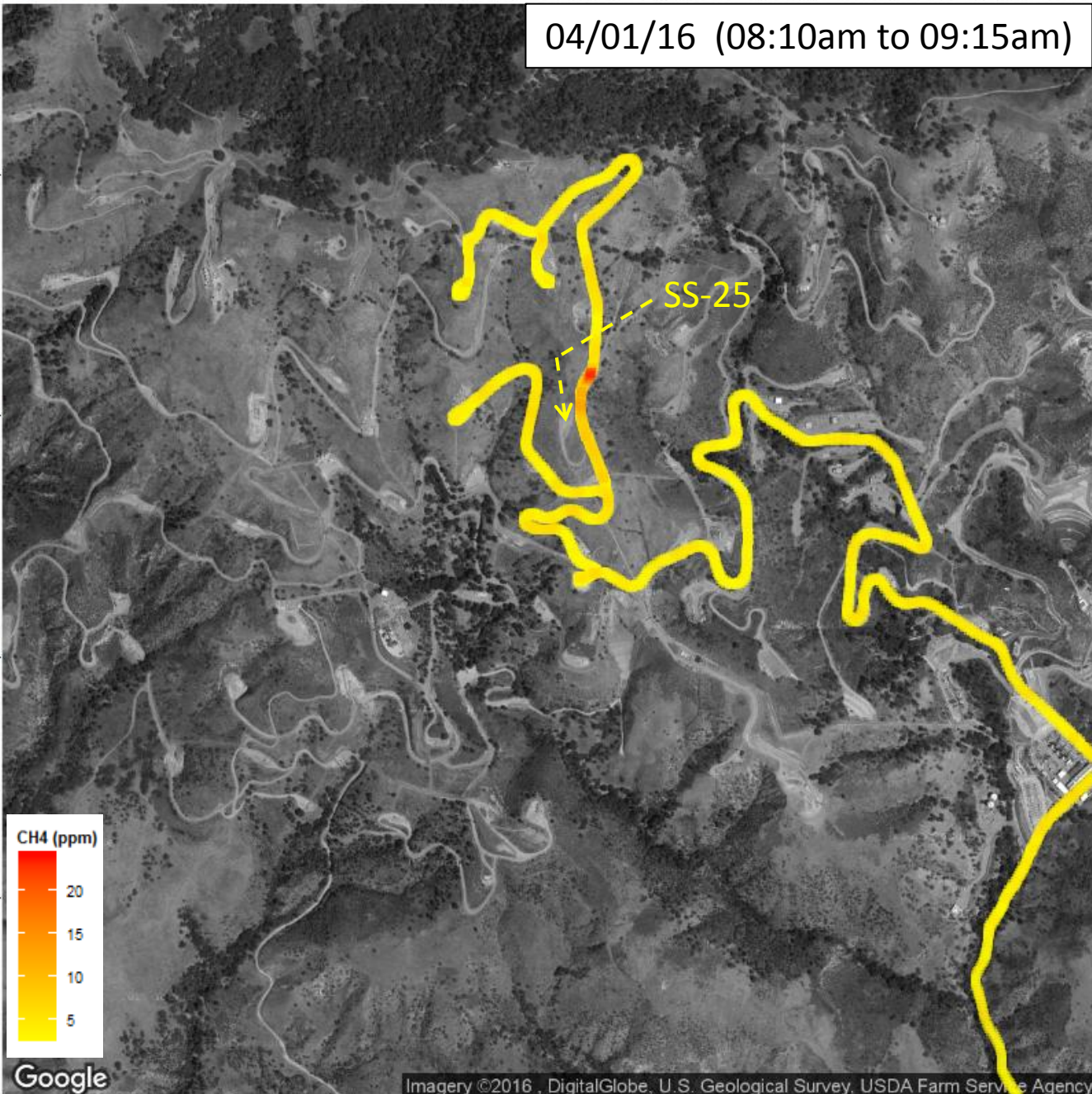


CH4 (ppm)

04/01/16 (08:10am to 09:15am)

Latitude
34.320
34.315
34.310
34.305



Google

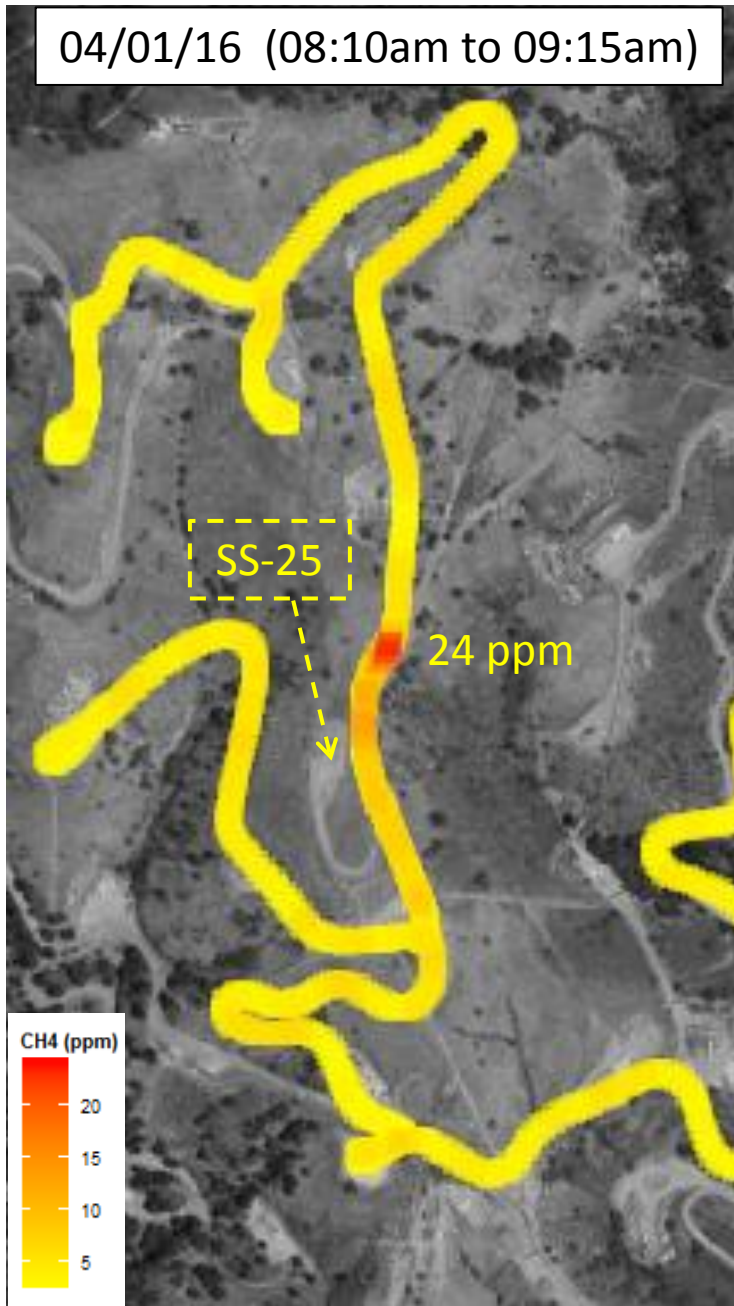
Imagery ©2016, DigitalGlobe, U.S. Geological Survey, USDA Farm Service Agency

-118.57

Longitude

-118.56

04/01/16 (08:10am to 09:15am)



- Methane concentrations ~150-200 ft E of SS-25 are still elevated (up to 24 ppm)
- SCAQMD inspectors used a portable TVA-1000 monitor to confirm these findings and complement the LICOR data
- Videos were taken with FLIR cameras to identify the presence of natural gas