



South Coast Air Quality Management District

21865 Copley Drive, Diamond Bar, CA 91765-4182
(909) 396-2000 • www.aqmd.gov

NOTICE OF PUBLIC MEETING TO DISCUSS TOXIC RISK FROM A FACILITY IN YOUR NEIGHBORHOOD

State law ensures your right to know about possible health risks from toxic air pollutants emitted by facilities in your neighborhood. The law requires the following facility to notify you:

Facility Name: Tesoro Refining and Marketing Company, Los Angeles Refinery
Address: 2101 E. Pacific Coast Hwy, Wilmington, CA 90744
Type of Business: Petroleum Refining

Even though this facility may be complying with all current air pollution control regulations, some toxic chemicals escape to the air during its normal operations. State law requires the facility to notify all of the people in the area where there is a possible health risk.

Summary of Health Risks

Toxic air pollutants from Tesoro Refining and Marketing Company may be increasing the cancer risk of people who live in the area shown on the attached "Facility Risk Map." Based on the calculated risk, people who live in the area of impact would have their chances of getting cancer increased by a maximum of 10.8 chances in a million over a 70 year lifetime due to emissions from this facility.

As the air pollution control agency for this area, the South Coast Air Quality Management District (AQMD) has prepared the enclosed "Information Sheet". Officials from the AQMD and Tesoro Refining and Marketing Company will conduct a public meeting in your area to answer questions about the toxic chemicals, and the potential health risks.

PUBLIC MEETING

Date: February 4th, 2014, Tuesday
Time: 6:30 PM
Location: Boys and Girls Clubs of Long Beach
Freeman E. Fairfield Westside Center
1835 W. Willard Street
Long Beach, CA 90810

For more information about the facility or the public meeting, please contact Mr. Ken Dami of Tesoro Refining and Marketing Company at (310) 847-5691. For more information about government programs to control toxic air pollution, call the AQMD AB2588 Section at (909) 396-3149.

**Businesses receiving this notice should post it
where it is most likely to be read by employees.**

Cleaning the air we breathe...

INFORMATION SHEET

What are toxic air pollutants?

Chemicals that cause cancer, birth defects or other health effects are known as toxic substances. When these toxic substances are released in the air, they are called toxic air pollutants.

Where do toxic air pollutants come from?

Toxic air pollutants come from a variety of sources. These sources include chemical plants and large manufacturers as well as cars and trucks and smaller businesses. Many products used at home, such as cleaners and paint thinners also contain toxic air pollutants.

What toxic air pollutants does this facility emit?

Under normal operation, this facility emits the toxic air pollutants listed below. The possible health effects of exposure to those pollutants are listed below:

Pollutant	Possible Health Effects	Contribution
Diesel particulate matter	Cancer	33%
1,3-butadiene	Cancer	23%
Benzene	Cancer	9%
Hexavalent chromium	Cancer	8%
Arsenic and compounds	Cancer	7%

What is the cancer risk from this facility?

For chemicals that could cause cancer, a calculation called a “risk assessment” was done. This is the best method officials currently have for estimating the chance that breathing small amounts of a chemical over a long period of time will cause cancer. Because the odds are generally small, they are written as a “number of chances in a million” of getting cancer.

The risk estimate conservatively assumes that a person continually breathes the same level of these pollutants for an entire lifetime (24 hours per day, 365 days per year, for 70 years). Most people are not exposed for that amount of time, so their actual risk is likely to be lower.

Based on the risk assessment, people who live in the area shown on the Facility Risk Map would have their chance of getting cancer increased by up to 10.8 chances in a million because of the emissions from this facility. The map shows the risks at various locations. The risk assessment is based on the emissions from the facility during the period of July 2006 through June 2007. This facility must continue to report its emissions to the AQMD.

How does the risk from this facility compare to other risks?

The risk from this facility is relatively small compared to the overall risk that the average American has of getting cancer. Currently, according to the American Cancer Society, about one out of three women and one out of two men get cancer sometime during their lifetime. In other words, the odds of getting cancer at some time in your life are between 330,000 and 500,000 per million.

What is the cancer risk from toxic air pollution in general?

For the Multiple Air Toxics Exposure Study III (MATES III), finalized in September 2008, cancer risks were estimated at ten sites in the South Coast air basin. The cancer risks range from 870 per million in Anaheim to 1,400 per million in Fontana. Cancer risks at the west Long Beach site were estimated to be about 1275 per million. These estimates assume that a person is exposed for a 70-year lifetime to the current levels of pollution. The levels of pollution should decrease in the future under SCAQMD and other government programs to reduce emissions.

What is being done to reduce the health risks from this facility?

The state law requiring issuance of this public notice is one step in getting facilities throughout the state to reduce toxic emissions resulting from their operations. The AQMD and other agencies have also developed other programs designed to prevent pollution and reduce exposure to toxic air pollution.

How can I get more information?

A copy of Tesoro Refining and Marketing Company's risk assessment report is available for your review at the following two libraries.

SCAQMD Library
21865 Copley Drive
Diamond Bar, CA 91765
Tue-Thu: 10:00 AM - 5:00 PM
Fri: 8:00 AM - 3:00 PM
Sat, Sun, & Mon: Closed

Bret Harte Neighborhood Library
1595 W. Willow St.
Long Beach, CA 90810
Tue & Thu: 12:00 PM - 7:00 PM
Wed: 12:00 PM - 6:00 PM
Fri & Sat: 10:00 AM - 5:00 PM
Sun & Mon: Closed

If you would like to know more about the state law or AQMD's toxics program, call or write the AQMD at:

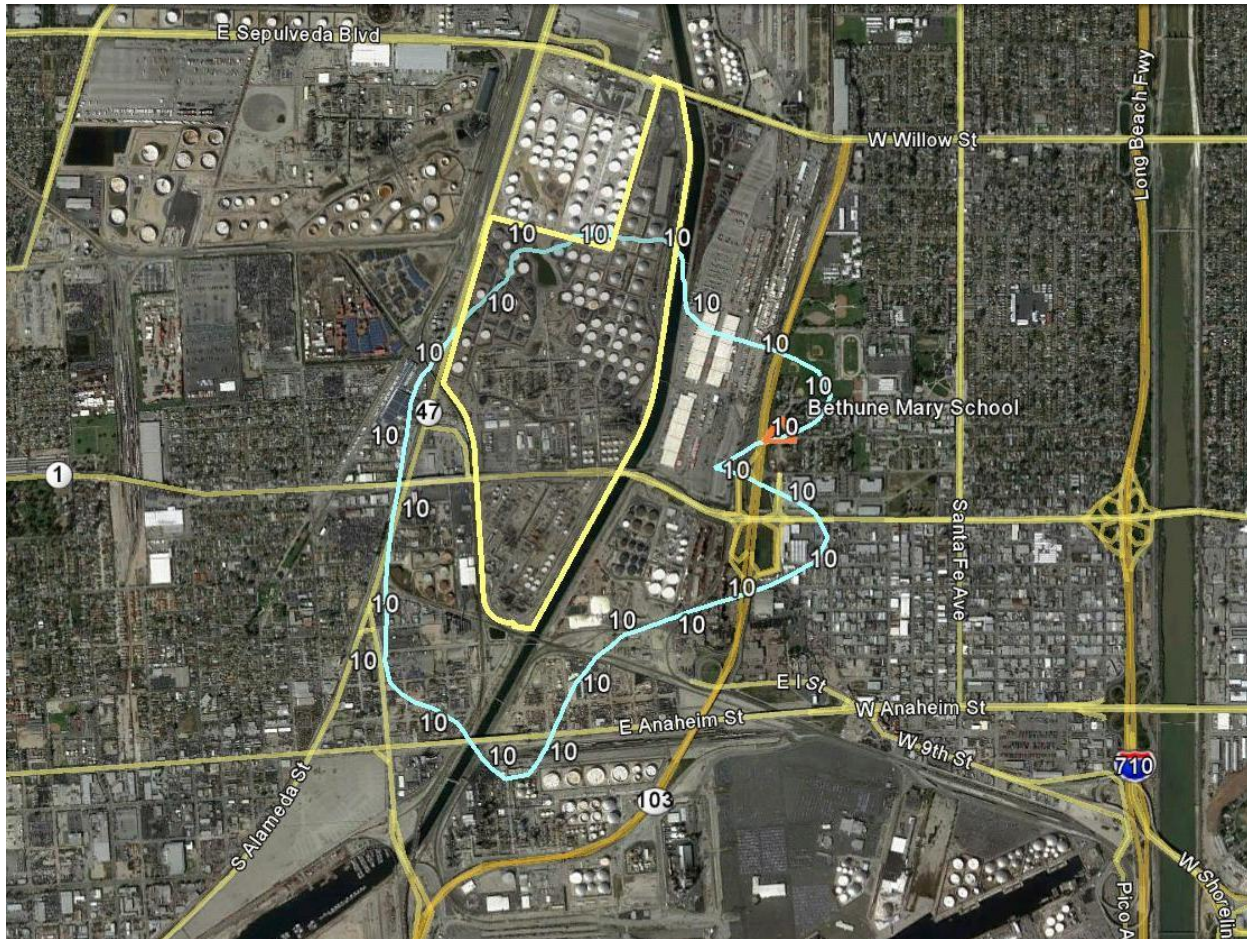
South Coast AQMD - AB2588 Section
21865 Copley Drive
Diamond Bar, CA 91765
(909) 396-3149

If you would like to know more about Tesoro Refining and Marketing Company's activities, call or write:

Mr. Ken Dami
Public and Government Affairs
Tesoro Refining and Marketing Company, LLC
Los Angeles Refinery
2101 East Pacific Coast Hwy
Wilmington, CA 90744
(310) 847-5691

FACILITY RISK MAP

70-year Cancer Risk Map for Tesoro Refining & Marketing Company (SCAQMD ID: 800436)



Note: Assuming a continuous exposure for 70 years, this map shows the area exceeding the 10 in-a-million cancer risk threshold.