

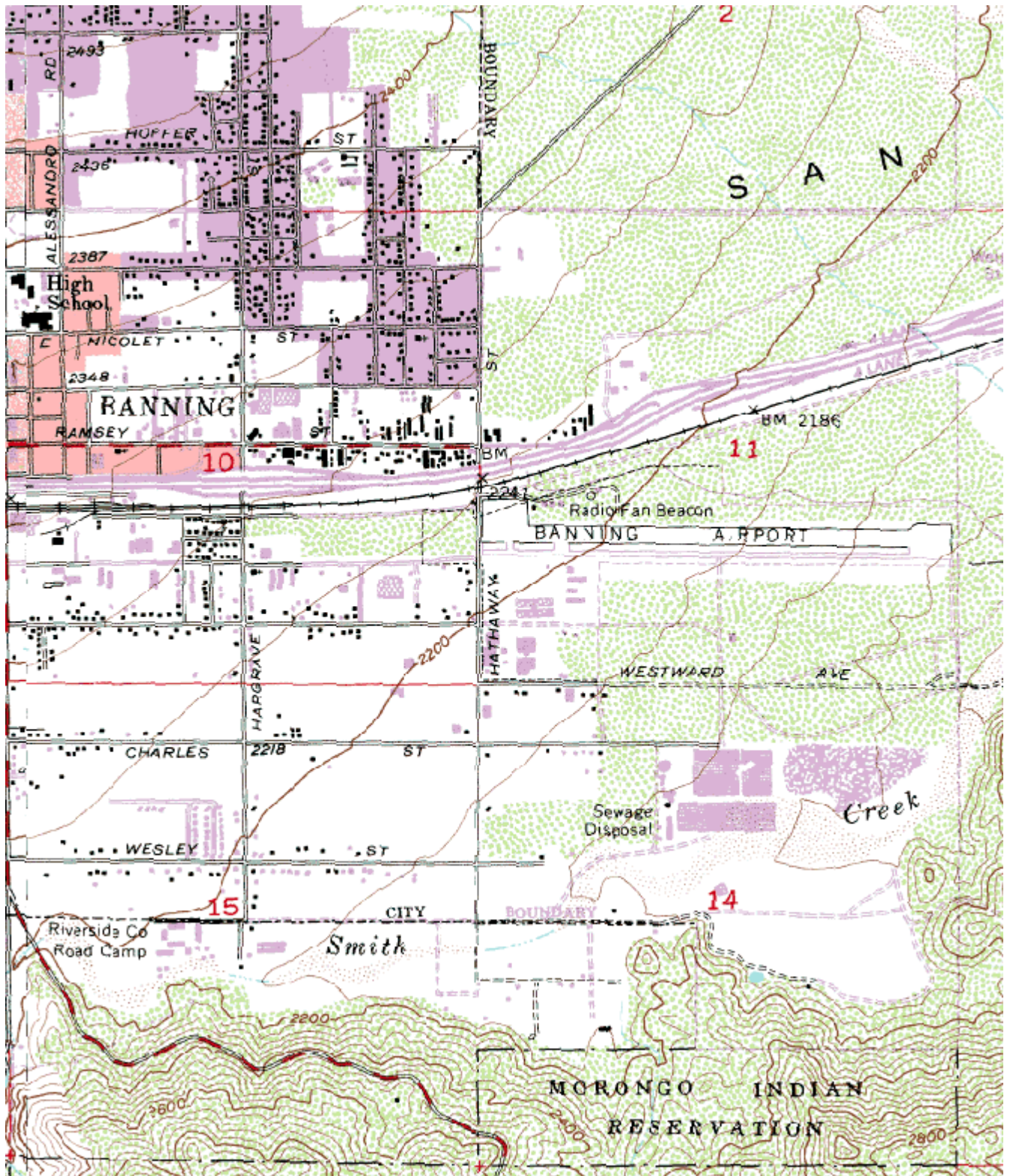
South Coast AQMD Site Survey Report for Banning-Airport

Last updated May, 2011



AIRS Number	ARB Number	Site Start Date	Reporting Agency and Agency Code
060650012	33164	04/97	South Coast AQMD (061)

Site Address	County	Air Basin	Latitude	Longitude	Elevation
200 S. Hathaway St Banning, CA 92220	Riverside	South Coast	33° 55' 14"N	116° 51' 30"W	671



Site Survey Report

Siting Information

Site Name: Banning-Airport	Date: 5/17/11	State Code: 33164	AIRS Number: 060650012
Address: 200 S. Hathaway St Banning, CA 92220	Latitude: 33° 55' 14"	Longitude: 116° 51' 30"	Elevation (m): 671
	Senior AQIS: Keith Brown	Site Technician: Brandon Feenstra	Site Phone: (951)849-8208
Operating Agency: South Coast AQMD			

General Siting Conditions

Station Temperature Controlled: Yes Recorded: Yes	Traffic Description: Residential Distance: 80 m Count (Veh/Day): < 2000	Topography Site: Level Region: Level	Predominant Wind Direction: E Arc Air Flow (Deg): 360 Degrees Probe Last Cleaned: 06/11		
		Meteorology Located With Instruments: Yes	Non-vehicular Local Sources Description: Aircraft Distance: 60 meters Direction: N/NE	QA Manual Approved: Yes Agency: SCAQMD	Manifold Clean: Yes Cleaning Schedule: 6 Months Autocalibrator Type: Environics 9100
				Urbanization: Rural	Site Survey Complete: Yes
Ground Cover: Gravel	Logbook Up To Date: Yes				

Action Items

Comments

Detailed Site Information

Site name	Banning-Airport			
AQS ID (AIRS #)	060650012			
GIS coordinates	Latitude: 33° 55' 14" Longitude: 116° 51' 30"			
Location	Airport			
Address	200 S Hathaway St, Banning, CA 92220			
County	Riverside			
Distance to road	80 meters			
Traffic count	< 2000 veh/day			
Groundcover	Gravel			
Representative area	40140-Riverside-San Bernardino-Ontario, CA MSA			
Pollutant	Nitrogen Dioxide	Ozone	PM10-SSI	PM2.5 BAM (Non FEM)
Site type	SLAMS	SLAMS	SLAMS	SLAMS
Monitor objective	Population Oriented	Population Oriented	Population Oriented	Population Oriented
Spatial scale	Neighborhood Scale	Neighborhood Scale	Neighborhood Scale	Neighborhood Scale
Instrument type	Primary	Primary	Primary	Non-FEM Continuous
Method code	N/A	N/A	N/A	731
POC code	1	1	1	3
Instrument manufacturer/model	Thermo 42i	Thermo 49i	Sierra Andersen 1200	MetOne BAM 1020
Serial #	CM08360051	510	3546	Y15495
Property #	0016765	E000314	N/A	E000070
Last calibration date	3/25/11	4/15/11	4/19/11	3/4/11
Analysis method	Chemiluminescence	UV Photometric	Gravimetric	Beta attenuation
Start date	04/01/97	04/01/97	04/01/97	02/10/06
Operation schedule	1:1	1:1	1:6	1:1
Sampling season	All Year	All Year	All Year	All Year
Probe height	4.05	4.05	3.5	4.75
Distance from supporting structure	2	2	2	2
Distance from obstructions on roof	N/A	N/A	N/A	N/A
Distance from obstructions not on roof	N/A	N/A	N/A	N/A
Distance from trees	N/A	N/A	N/A	N/A
Distance to furnace or incinerator flue	N/A	N/A	N/A	N/A
Distance between collocated monitors	N/A	N/A	N/A	N/A
Unrestricted airflow	Yes	Yes	Yes	Yes
Probe material	Teflon	Teflon	N/A	N/A
Residence time	9.1	8.2	N/A	N/A
Will there be changes within the next 18 months?	No	No	No	No
Is it suitable for comparison against the annual PM2.5?	N/A	N/A	N/A	No

Frequency of flow rate verification for manual PM samplers audit	N/A	N/A	Monthly	N/A
Frequency of flow rate verification for automated PM analyzers audit	N/A	N/A	N/A	Monthly
Frequency of one-point QC check (gaseous)	Nightly	Nightly	N/A	N/A
Date of last annual performance evaluation	2/1/11	2/1/11	N/A	2/1/11
Dates of semi-annual flow rate audits for PM monitors	N/A	N/A	6/8/10	N/A
	N/A	N/A	12/14/10	N/A
Date of past year's PM2.5-PEP audit	N/A	N/A	N/A	N/A
Date of past year's Pb-PEP audit	N/A	N/A	N/A	N/A

**Banning-Airport
Site Photos**



Looking North from the probe.



Looking East from the probe.



Looking South from the probe.



Looking West from the probe.

**Banning-Airport
Site Photos (Cont.)**



Looking at the probe from the North.



Looking at the probe from the East.



Looking at the probe from the South.



Looking at the probe from the West.