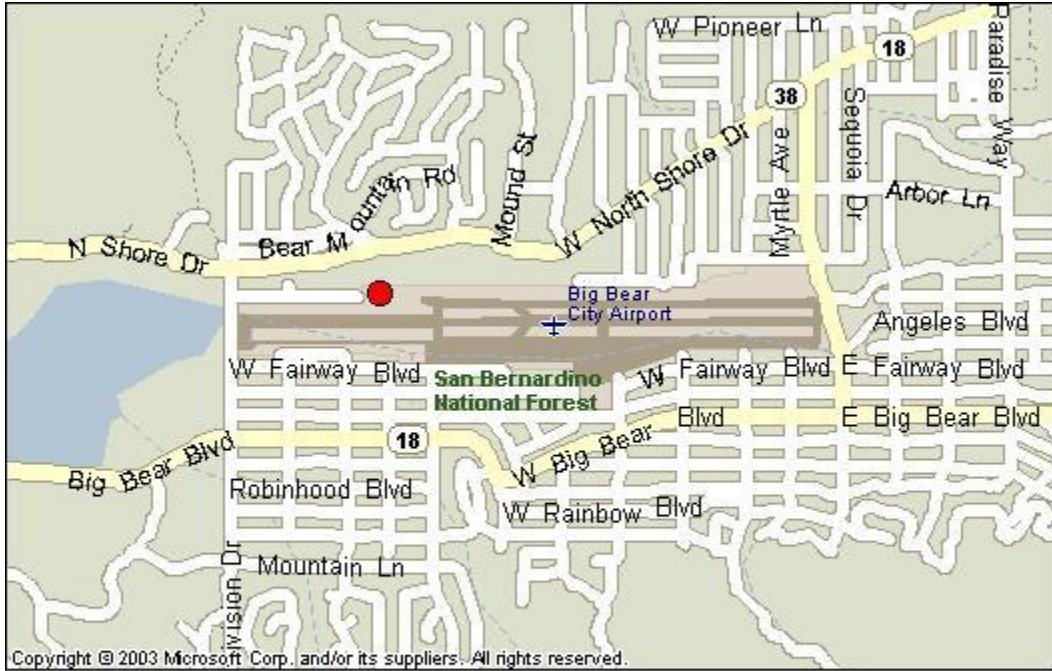


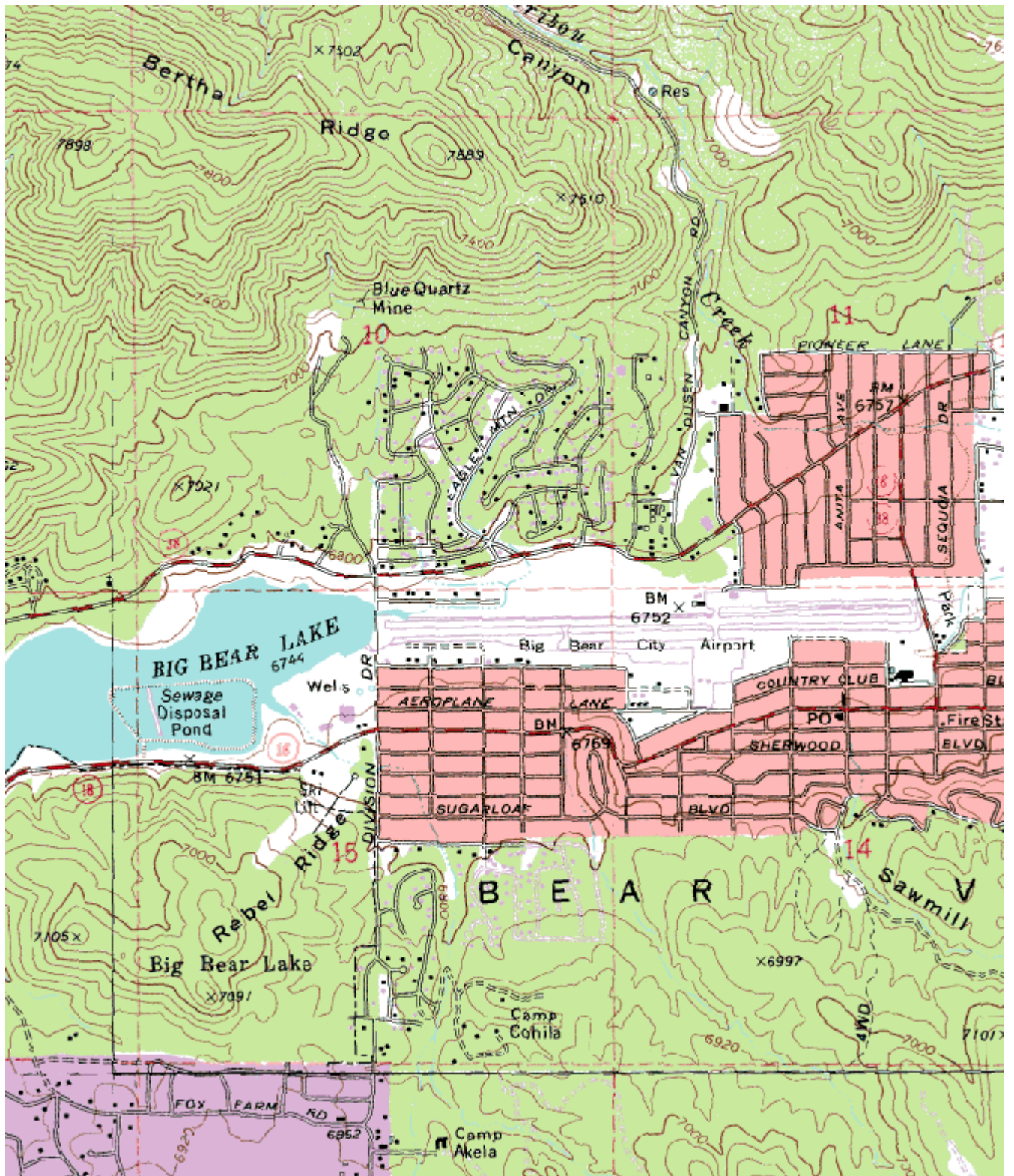
South Coast AQMD Site Survey Report for Big Bear

Last updated May, 2011



AIRS Number	ARB Number	Site Start Date	Reporting Agency and Agency Code
060718001	36001	02/99	South Coast AQMD (061)

Site Address	County	Air Basin	Latitude	Longitude	Elevation
501 W. Valley Blvd Big Bear City, CA 92314	San Bernardino	South Coast	34° 15' 52"N	116° 51' 41"W	2059



Site Survey Report

Siting Information

Site Name: Big Bear	Date: 5/17/11	State Code: 36001	AIRS Number: 060718001
Address: 501 Valley Blvd Big Bear City, CA 92314	Latitude: 34° 15' 52"	Longitude: 116° 51' 41"	Elevation (m): 2059
	Senior AQIS: Keith Brown	Site Technician: Twyla Miner	Site Phone: N/A
Operating Agency: South Coast AQMD			

General Siting Conditions

Station Temperature Controlled: No Recorded: No	Traffic Description: Hwy Distance: 114 m Count (Veh/Day): 2876	Topography Site: Level Region: Mountainous	Predominant Wind Direction: E
		QA Manual Approved: Yes Agency: South Coast AQMD Urbanization: Forest/Residential Ground Cover: Grassland	Arc Air Flow (Deg): 360 Degrees
			Probe Last Cleaned: N/A
Meteorology Located With Instruments: No	Non-vehicular Local Sources Description: Airport Distance: 50 meters Direction: SE	Manifold Clean: N/A Cleaning Schedule: N/A Autocalibrator Type: N/A Site Survey Complete: Yes Logbook Up To Date: Yes	

Action Items

Comments

Detailed Site Information

Site name	Big Bear			
AQS ID (AIRS #)	060718001			
GIS coordinates	Latitude: 34° 15' 52" Longitude: 116° 51' 41"			
Location	Big Bear Airport			
Address	501 W. Valley Blvd, Big Bear, CA 92314			
County	San Bernardino			
Distance to road	114 meters			
Traffic count	2876 veh/day			
Groundcover	Grassland			
Representative area	40140-Riverside-San Bernardino-Ontario, CA MSA			
Pollutant	PM2.5 RAAS			
Site type	SLAMS			
Monitor objective	Population oriented			
Spatial scale	Neighborhood Scale			
Instrument type	Primary			
Method code	N/A			
POC code	1			
Instrument manufacturer/model	Andersen RAAS PM2.5			
Serial #	00099			
Property #	E000010			
Last calibration date	8/25/10			
Analysis method	Gravimetric			
Start date	02/08/99			
Operation schedule	1:6			
Sampling season	All Year			
Probe height	2.9			
Distance from supporting structure	2			
Distance from obstructions on roof	N/A			
Distance from obstructions not on roof	N/A			
Distance from trees	36			
Distance to furnace or incinerator flue	N/A			
Distance between collocated monitors	N/A			
Unrestricted airflow	Yes			
Probe material	N/A			
Residence time	N/A			
Will there be changes within the next 18 months?	No			
Is it suitable for comparison against the annual PM2.5?	Yes			

Frequency of flow rate verification for manual PM samplers audit	Monthly			
Frequency of flow rate verification for automated PM analyzers audit	N/A			
Frequency of one-point QC check (gaseous)	N/A			
Date of last annual performance evaluation	N/A			
Dates of semi-annual flow rate audits for PM monitors	6/8/10			
	12/14/10			
Date of past year's PM2.5-PEP audit				
Date of past year's Pb-PEP audit	N/A			

**Big Bear
Site Photos**



Looking North from the probe.



Looking East from the probe.



Looking South from the probe.



Looking West from the probe.

**Big Bear
Site Photos (Cont.)**



Looking at the probe from the North.



Looking at the probe from the East.



Looking at the probe from the South.



Looking at the probe from the West.