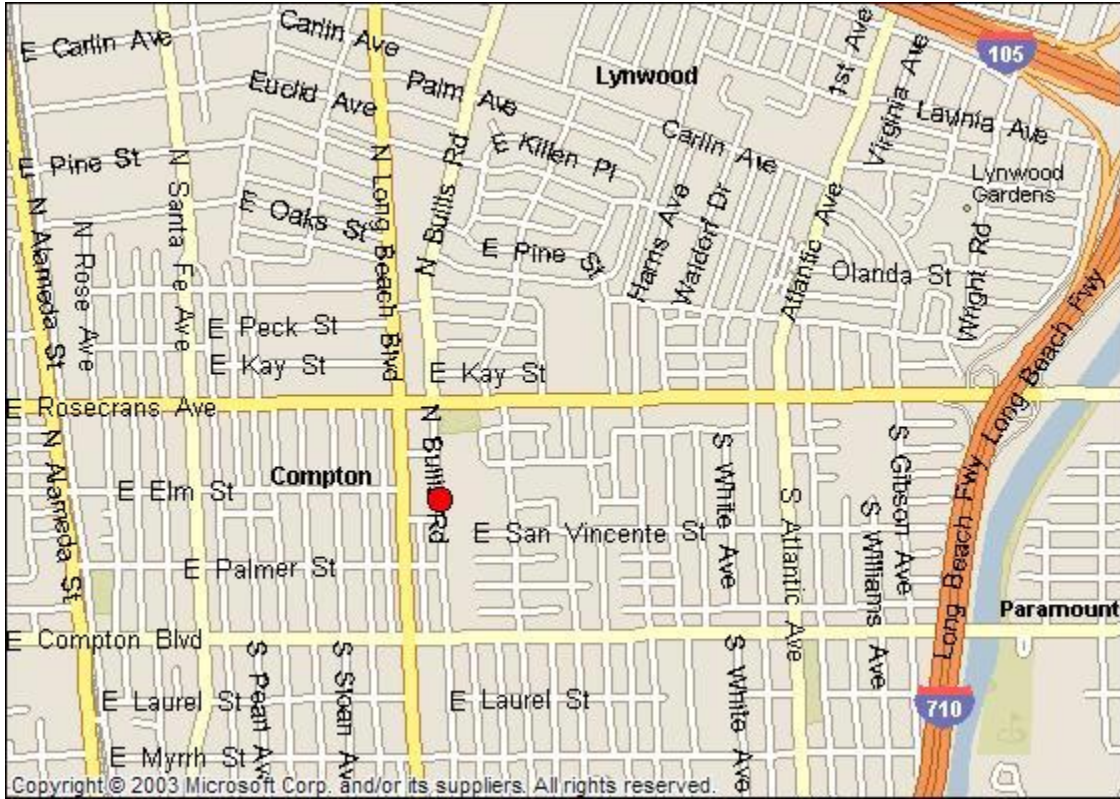
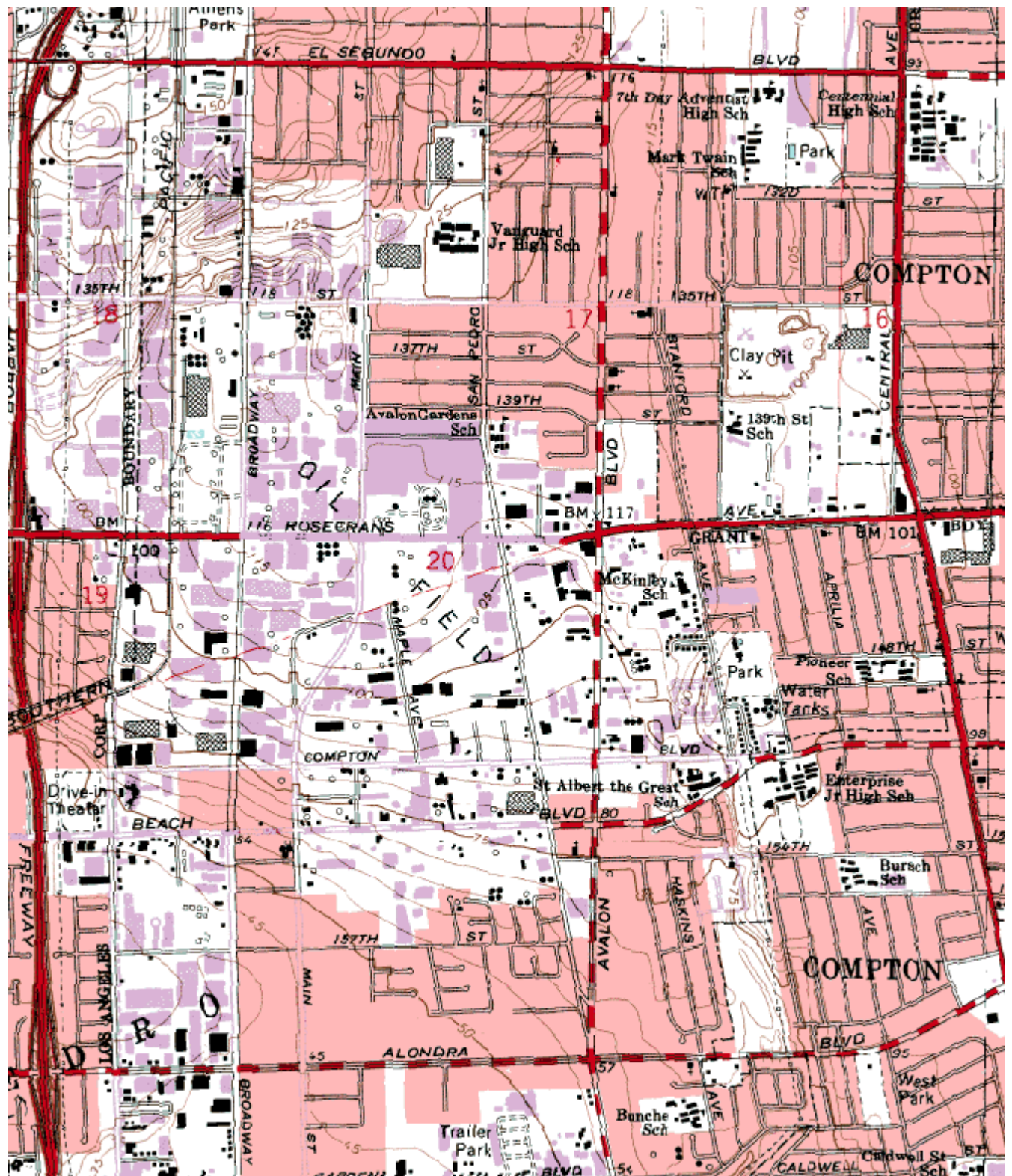


## South Coast AQMD Site Survey Report for Compton

Last updated May, 2011



AIRS Number	ARB Number	Site Start Date	Reporting Agency and Agency Code			
060371302	70112	01/04	<a href="#">South Coast AQMD (061)</a>			
Site Address		County	Air Basin	Latitude	Longitude	Elevation
700 North Bullis Rd Compton, CA 90221		<a href="#">Los Angeles</a>	<a href="#">South Coast</a>	33° 54' 05"N	118° 12' 18"W	22



# Site Survey Report

## Siting Information

Site Name: Compton	Date: 5/20/11	State Code: 70112	AIRS Number: 060371302
Address: 700 North Bullis Rd Compton, CA 90221	Latitude: 33° 54' 05"	Longitude: 118° 12' 18"	Elevation (m): 22
	Senior AQIS: Albert Dietrich	Site Technician: Robert Wimmer	Site Phone: N/A
Operating Agency: South Coast AQMD			

## General Siting Conditions

<b>Station Temperature</b>	<b>Traffic</b>	<b>Topography</b>	Predominant Wind Direction: W		
			Arc Air Flow (Deg): 360 Degrees		
		Controlled: Yes Recorded: Yes	Description: Residential Distance: 13 - 17 m Count (Veh/Day): < 1000	Site: Level Region: Level	Probe Last Cleaned: 06/11
<b>Meteorology</b>	<b>Non-vehicular Local Sources</b>	<b>QA Manual</b>	Manifold Clean: Yes		
			Cleaning Schedule: 6 Months		
		Located With Instruments: Yes	Description: None Distance: N/A Direction: N/A	Approved: Yes Agency: South Coast AQMD	Autocalibrator Type: Environics
				Urbanization: Suburban Ground Cover: Asphalt	Site Survey Complete: Yes Logbook Up To Date: Yes

## Action Items

## Comments

## Detailed Site Information

Site name	Compton			
AQS ID (AIRS #)	060371302			
GIS coordinates	Latitude: 33° 54' 05" Longitude: 118° 12' 18"			
Location	City of Compton Job Training Facility			
Address	700 N Bullis Rd, Compton, CA 90221			
County	Los Angeles			
Distance to road	13 – 17 m			
Traffic count	1,000 veh/day			
Groundcover	Asphalt			
Representative area	31100-Los Angeles-Long Beach-Santa Ana, CA MSA			
Pollutant	Carbon Monoxide	Nitrogen Dioxide	Ozone	TSP (Lead)
Site type	SLAMS	SLAMS	SLAMS	SLAMS
Monitor objective	Highest Concentration	Population Exposure	Population Exposure	Population Exposure
Spatial scale	Middle Scale	Middle Scale	Neighborhood Scale	Neighborhood Scale
Instrument type	Primary	Primary	Primary	Primary
Method code	N/A	N/A	N/A	N/A
POC code	1	1	1	1
Instrument manufacturer/model	APMA 370	Thermo 42i	Thermo 49i	GMW
Serial #	H000CYAV	CM08360054	0610116251	N/A
Property #	E000347	16726	116251	1524
Last calibration date	11/19/10	12/1/10	11/30/10	1/25/11
Analysis method	Non dispersive infrared	Chemiluminescence	UV Photometric	Inductively Coupled Argon Plasma-Mass Spectrometry
Start date	1/04	1/04	1/04	1/04
Operation schedule	1:1	1:1	1:1	1:6
Sampling season	All Year	All Year	All Year	All Year
Probe height	4.0	4.0	4.0	3.0
Distance from supporting structure	1.5	1.5	1.5	1.1
Distance from obstructions on roof	N/A	N/A	N/A	N/A
Distance from obstructions not on roof	N/A	N/A	N/A	N/A
Distance from trees	16	16	16	13
Distance to furnace or incinerator flue	N/A	N/A	N/A	N/A
Distance between collocated monitors	N/A	N/A	N/A	N/A
Unrestricted airflow	Yes	Yes	Yes	Yes
Probe material	Teflon	Teflon	Teflon	N/A
Residence time	6.5	7.6	7.6	N/A
Will there be changes within the next 18 months?	No	No	No	No

Is it suitable for comparison against the annual PM2.5?	N/A	N/A	N/A	N/A
Frequency of flow rate verification for manual PM samplers audit	N/A	N/A	N/A	Monthly
Frequency of flow rate verification for automated PM analyzers audit	N/A	N/A	N/A	N/A
Frequency of one-point QC check (gaseous)	Nightly	Nightly	Nightly	N/A
Date of last annual performance evaluation	5/20/11	5/20/11	5/20/11	N/A
Dates of semi-annual flow rate audits for PM monitors	N/A	N/A	N/A	
	N/A	N/A	N/A	3/22/10, 5/27/10
Date of past year's PM2.5-PEP audit	N/A	N/A	N/A	9/30/10, 12/15/10
Date of past year's Pb-PEP audit	N/A	N/A	N/A	Scheduled

Pollutant	PM2.5 RAAS			
Site type	SLAMS			
Monitor objective	Population Oriented			
Spatial scale	Neighborhood Scale			
Instrument type	Primary			
Method code	N/A			
POC code	1			
Instrument manufacturer/model	Sierra Andersen RAAS PM2.5			
Serial #	00369			
Property #	E000004			
Last Calibration Date	1/28/11			
Analysis method	Gravimetric			
Start date	1/04			
Operation schedule	1:3			
Sampling season	All Year			
Probe height	2.5			
Distance from supporting structure	1.0			
Distance from obstructions on roof	NA			
Distance from obstructions not on roof	N/A			
Distance from trees	17			
Distance to furnace or incinerator flue	N/A			

Distance between collocated monitors	N/A			
Unrestricted airflow	Yes			
Probe material	N/A			
Residence time	N/A			
Will there be changes within the next 18 months?	No			
Is it suitable for comparison against the annual PM2.5?	Yes			
Frequency of flow rate verification for manual PM samplers audit	Monthly			
Frequency of flow rate verification for automated PM analyzers audit	N/A			
Frequency of one-point QC check (gaseous)	N/A			
Date of last annual performance evaluation	N/A			
Dates of semi-annual flow rate audits for PM monitors	5/27/10			
	12/15/10			
Date of past year's PM2.5-PEP audit	Scheduled			
Date of past year's Pb-PEP audit	Scheduled			

**Compton  
Site Photos**



**Looking North from the probe.**



**Looking East from the probe.**



**Looking South from the probe.**



**Looking West from the probe.**

**Compton  
Site Photos (Cont.)**



**Looking at the probe from the North.**



**Looking at the probe from the East.**



**Looking at the probe from the South.**



**Looking at the probe from the West.**