

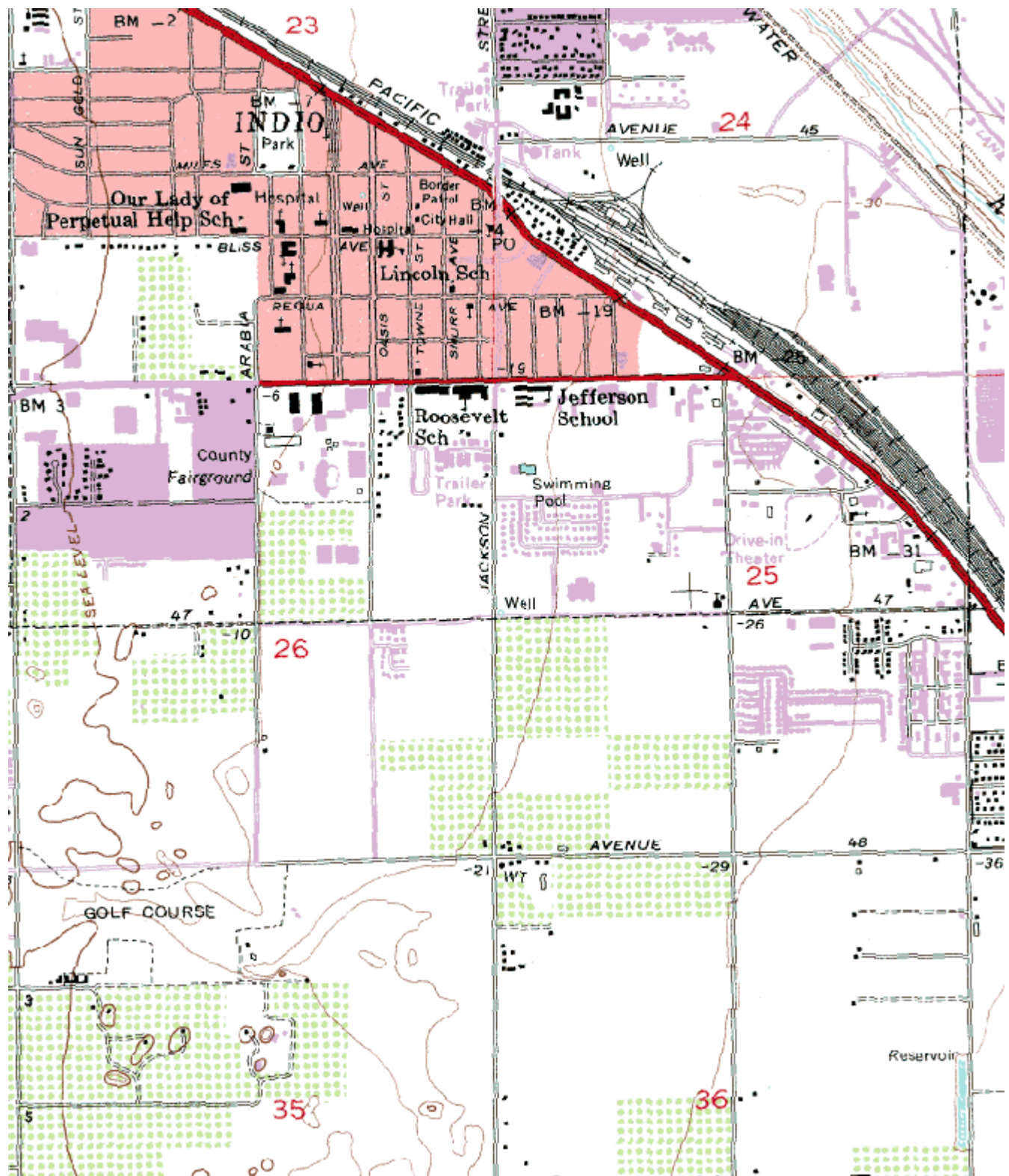
South Coast AQMD Site Survey Report for Indio-Jackson Street

Last updated May, 2011



AIRS Number	ARB Number	Site Start Date	Reporting Agency and Agency Code
060652002	33157	01/83	South Coast AQMD (061)

Site Address	County	Air Basin	Latitude	Longitude	Elevation
46990 Jackson St Indio, CA 92201	Riverside	Salton Sea	33° 42' 30"N	116° 12' 55"W	0



Site Survey Report

Siting Information

Site Name: Indio-Jackson St	Date: 05/24/11	State Code: 33157	AIRS Number: 060652002
Address: 46990 Jackson St Indio, CA 92201	Latitude: 33° 42' 30"	Longitude: 116° 12' 55"	Elevation (m): 0
	Senior AQIS: Keith Brown	Site Technician: Jeff Baerenwald	Site Phone: (760) 347-6920
Operating Agency: South Coast AQMD			

General Siting Conditions

Station Temperature Controlled: Yes Recorded: Yes	Traffic Description: Arterial Distance: 88 meters Count (Veh/Day): 16528	Topography Site: Level	Predominant Wind Direction: SE
		Region: Level	Arc Air Flow (Deg): 360 Degrees
		QA Manual	Probe Last Cleaned: 06/11
Meteorology Located With Instruments: Yes	Non-vehicular Local Sources Description: Dirt Lot Distance: 6 Direction: E	Approved: Yes	Manifold Clean: Yes
		Agency: South Coast AQMD	Cleaning Schedule: 6 Months
		Urbanization: Suburban	Autocalibrator Type: Environics 9100
		Ground Cover: Asphalt/dirt	Site Survey Complete: Yes
			Logbook Up To Date: Yes

Action Items

Comments

Detailed Site Information

Site name	Indio-Jackson Street			
AQS ID (AIRS #)	060652002			
GIS coordinates	Latitude: 33° 42' 30" Longitude: 116° 12' 55"			
Location	Police Department			
Address	46990 Jackson Street, Indio, CA 92201			
County	Riverside			
Distance to road	88 meters			
Traffic count	16258			
Groundcover	Asphalt/dirt			
Representative area	40140-Riverside-San Bernardino-Ontario, CA MSA			
Pollutant	Ozone	PM10-SSI (A)	PM10-SSI (B)	PM10-SSI (C)
Site type	SLAMS	SLAMS	SLAMS	SLAMS
Monitor objective	Population Oriented	Highest Concentration	Highest Concentration	Highest Concentration
Spatial scale	Neighborhood Scale	Neighborhood Scale	Neighborhood Scale	Neighborhood Scale
Instrument type	Primary	Primary (1:6 day)	Primary (1:3 day)	Audit
Method code	N/A	N/A	N/A	N/A
POC code	1	1	1	2
Instrument manufacturer/model	API/Teledyne 400E	Tisch TE300-310	Tisch TE300-310	Tisch TE300-310
Serial #	526-S	15397 A-1	1559 A-2	1593
Property #	N/A	15532	53044	53044
Last calibration date	5/4/11	1/19/11	1/19/11	1/19/11
Analysis method	UV Photometric	Gravimetric	Gravimetric	Gravimetric
Start date	01/83	01/83	03/03	03/03
Operation schedule	1:1	1:6	1:6	1:6
Sampling season	All Year	All Year	All Year	All Year
Probe height	9.0	3.5	3.5	3.5
Distance from supporting structure	1:1	1:6	1:6	1:6
Distance from obstructions on roof	N/A	N/A	N/A	N/A
Distance from obstructions not on roof	N/A	N/A	N/A	N/A
Distance from trees	N/A	N/A	N/A	N/A
Distance to furnace or incinerator flue	N/A	N/A	N/A	N/A
Distance between collocated monitors	N/A	2.0	2.0	2.0
Unrestricted airflow	Yes	Yes	Yes	Yes
Probe material	Teflon	N/A	N/A	N/A
Residence time	12.5	N/A	N/A	N/A
Will there be changes within the next 18 months?	Yes	Yes	Yes	Yes
Is it suitable for comparison against the annual PM2.5?	N/A	N/A	N/A	N/A

Frequency of flow rate verification for manual PM samplers audit	N/A	Monthly	Monthly	Monthly
Frequency of flow rate verification for automated PM analyzers audit	N/A	N/A	N/A	N/A
Frequency of one-point QC check (gaseous)	Nightly	N/A	N/A	N/A
Date of last annual performance evaluation	11/30/10	N/A	N/A	N/A
Dates of semi-annual flow rate audits for PM monitors	N/A	6/8/10	6/8/10	6/8/10
	N/A	12/14/10	12/14/10	12/14/10
Date of past year's PM2.5-PEP audit	N/A	N/A	N/A	N/A
Date of past year's Pb-PEP audit	N/A	N/A	N/A	N/A

Pollutant	TEOM PM10	PM2.5 – A	PM2.5 – B	PM10-SSI (D)
Site type	SLAMS	SLAMS	SLAMS	Non - Regulatory
Monitor objective	Highest Concentration	Population Oriented	Population Oriented	Data Comparison
Spatial scale	Neighborhood Scale	Neighborhood Scale	Neighborhood Scale	Neighborhood Scale
Instrument type	Audit	Primary	Audit	N/A
Method code	079	N/A	N/A	N/A
POC code	3	1	2	2
Instrument manufacturer/model	TEOM 1400N R&P	Andersen 300 RAAS	Andersen 300 RAAS	Tisch TE300-310
Serial #	140AB263200607	160	442	
Property #	E000338	N/A	N/A	
Last calibration date	01/19/11	11/17/10	07/01/10	
Analysis method	TEOM	Gravimetric	Gravimetric	Gravimetric
Start date	02/09/09	02/04/99	12/30/99	
Operation schedule	1:1	1:3	1:6	1:6
Sampling season	All Year	All Year	All Year	All Year
Probe height	7.0	4.8	4.8	3.5
Distance from supporting structure	1.8	1.6	1.6	1:6
Distance from obstructions on roof	N/A	N/A	N/A	N/A
Distance from obstructions not on roof	N/A	N/A	N/A	N/A
Distance from trees	N/A	N/A	N/A	N/A
Distance to furnace or incinerator flue	N/A	N/A	N/A	N/A
Distance between collocated monitors	4.0	2.0	2.0	2.0
Unrestricted airflow	N/A	Yes	Yes	Yes

Probe material	N/A	N/A	N/A	N/A
Residence time	N/A	N/A	N/A	N/A
Will there be changes within the next 18 months?	No	No	No	Yes
Is it suitable for comparison against the annual PM2.5?	N/A	Yes	Yes	N/A
Frequency of flow rate verification for manual PM samplers audit	N/A	Monthly	Monthly	Monthly
Frequency of flow rate verification for automated PM analyzers audit	Monthly	N/A	N/A	N/A
Frequency of one-point QC check (gaseous)	N/A	N/A	N/A	N/A
Date of last annual performance evaluation	11/30/10	N/A	N/A	N/A
Dates of semi-annual flow rate audits for PM monitors	N/A	6/8/10	6/8/10	N/A
	N/A	12/15/10	12/15/10	12/14/10
Date of past year's PM2.5-PEP audit	N/A	Scheduled	Scheduled	N/A
Date of past year's Pb-PEP audit	N/A	N/A	N/A	N/A

**Indio-Jackson Street
Site Photos**



Looking North from the probe.



Looking East from the probe.



Looking South from the probe.



Looking West from the probe.

**Indio-Jackson Street
Site Photos (Cont.)**



Looking at the probe from the North.



Looking at the probe from the East.



Looking at the probe from the South.



Looking at the probe from the West.