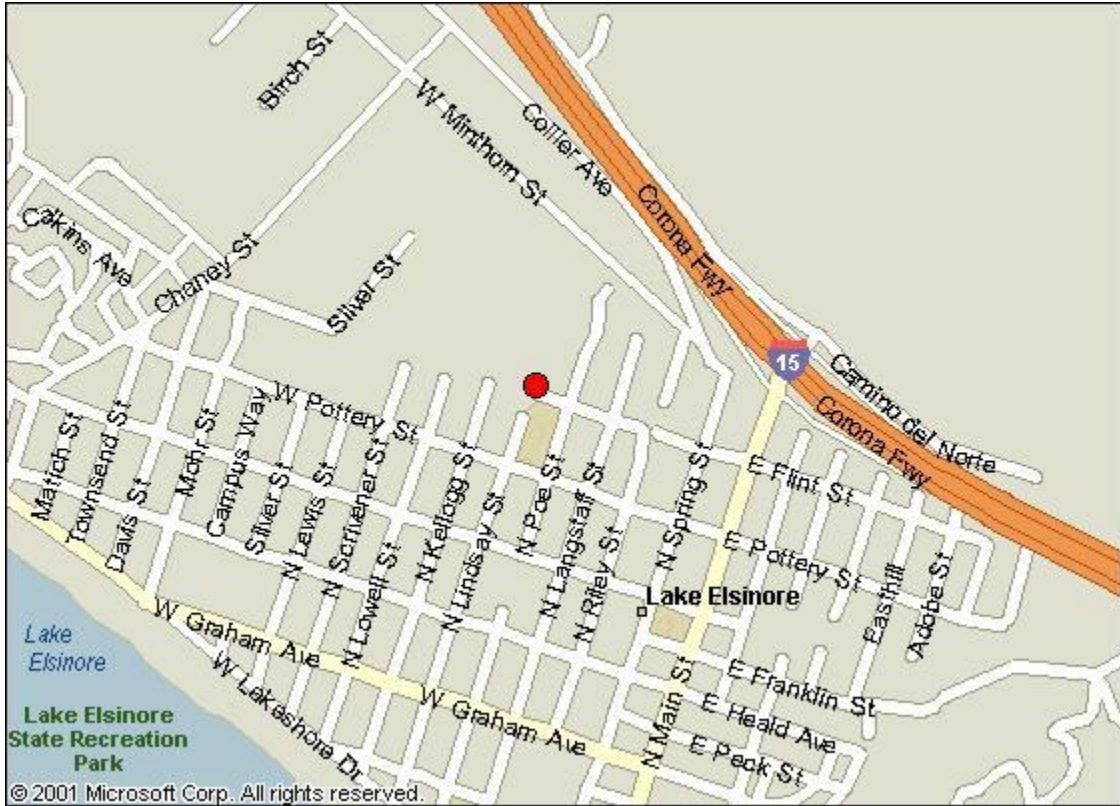


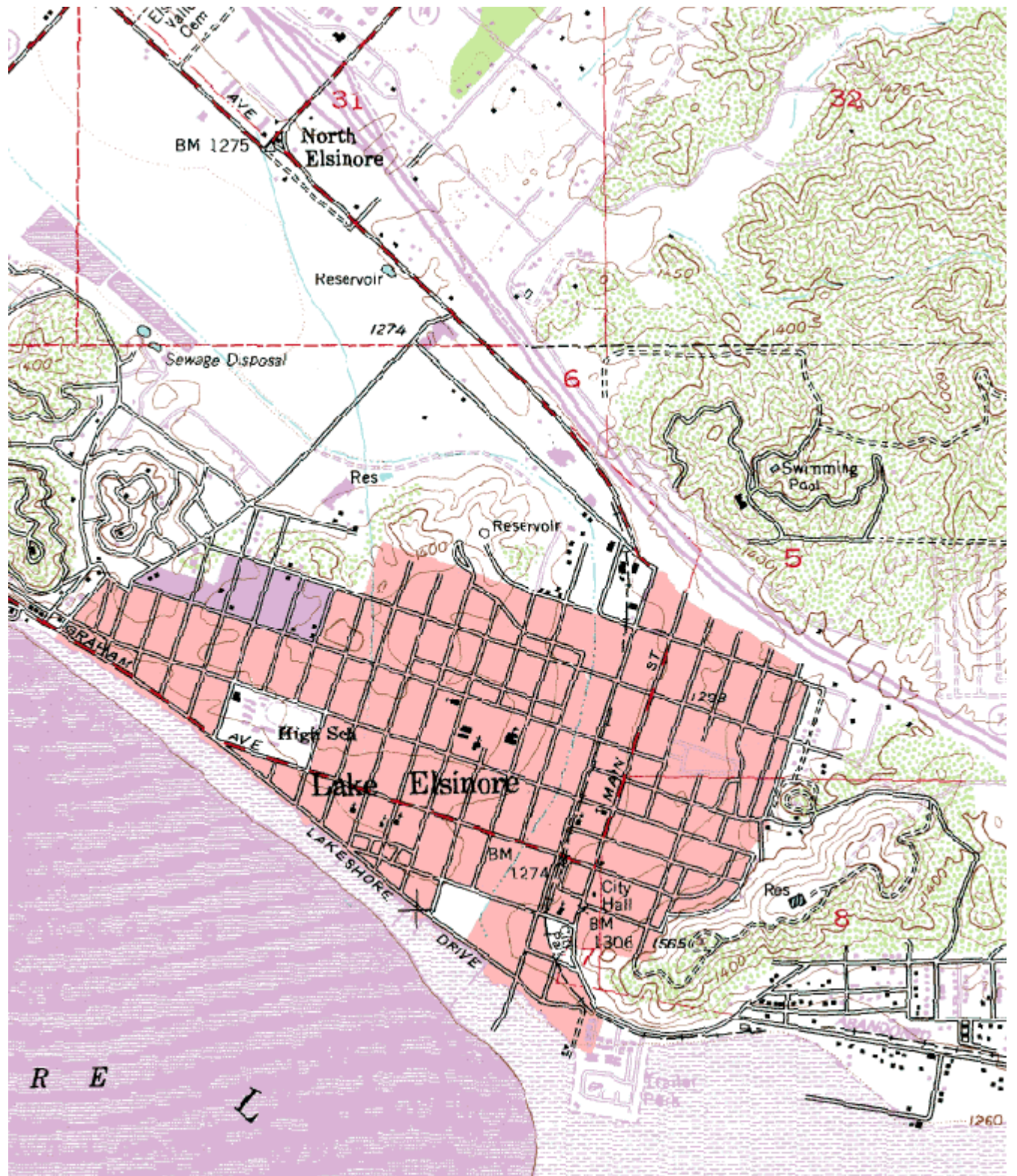
**South Coast AQMD
Site Survey Report for Lake Elsinore-W Flint Street**

Last updated May, 2011



AIRS Number	ARB Number	Site Start Date	Reporting Agency and Agency Code
060659001	33158	06/87	South Coast AQMD (061)

Site Address	County	Air Basin	Latitude	Longitude	Elevation
506 W Flint St Lake Elsinore, CA 92530	Riverside	South Coast	33° 40' 35"N	117° 19' 51"W	410



Site Survey Report

Siting Information

Site Name: Lake Elsinore-W Flint St	Date: 05/24/11	State Code: 33158	AIRS Number: 060659001
Address: 506 W Flint St Lake Elsinore, CA 92530	Latitude: 33° 40' 35"	Longitude: 117° 19' 51"	Elevation (m): 410
	Senior AQIS: Keith Brown	Site Technician: Twyla Miner	Site Phone: (951) 674-2616
Operating Agency: South Coast AQMD			

General Siting Conditions

Station Temperature Controlled: Yes Recorded: Yes	Traffic Description: Residential Distance: 50 meters Count (Veh/Day): < 2000	Topography Site: Hilltop Region: Valley	Predominant Wind Direction: S Arc Air Flow (Deg): 360 Degrees Probe Last Cleaned: 6/11
		QA Manual Approved: Yes Agency: SCAQMD Urbanization: Rural Ground Cover: Asphalt	Manifold Clean: Yes Cleaning Schedule: 6 Months Autocalibrator Type: Environics 100
			Site Survey Complete: Yes Logbook Up To Date: Yes
Meteorology Located With Instruments: Yes	Non-vehicular Local Sources Description: None Distance: N/A Direction: N/A		

Action Items

--

Comments

--

Detailed Site Information

Site name	Lake Elsinore-W Flint Street			
AQS ID (AIRS #)	060659001			
GIS coordinates	Latitude: 33° 40' 35" Longitude: 117° 19' 51"			
Location	Vacant Lot			
Address	506 W Flint St, Lake Elsinore, CA 92530			
County	Riverside			
Distance to road	50 meters			
Traffic count	< 2000 veh/day			
Groundcover	Asphalt			
Representative area	40140-Riverside-San Bernardino-Ontario, CA MSA			
Pollutant	Carbon Monoxide	Nitrogen Dioxide	Ozone	TEOM PM10
Site type	SLAMS	SLAMS	SLAMS	SLAMS
Monitor objective	Population Oriented	Population Oriented	Population Oriented	Population Oriented
Spatial scale	Neighborhood Scale	Neighborhood Scale	Neighborhood Scale	Neighborhood Scale
Instrument type	Primary	Primary	Primary	Primary
Method code	N/A	N/A	N/A	079
POC code	1	1	1	3
Instrument manufacturer/model	Horiba APMA-360	Teco 42i	Thermo 49i	R&P 1400A
Serial #	41407730011	CM08360053	116255	140A-2197
Property #	0016506	16741	N/A	ARB20003765
Last calibration date	10/20/10	2/24/11	3/3/11	4/13/11
Analysis method	Non dispersive infrared	06/87	UV Photometric	TEOM
Start date	06/87	06/87	06/87	01/10/94
Operation schedule	1:1	1:1	1:1	1:1
Sampling season	All Year	All Year	All Year	All Year
Probe height	4.1	4.1	4.1	4.35
Distance from supporting structure	1.8	1.8	1.8	1.8
Distance from obstructions on roof	N/A	N/A	N/A	N/A
Distance from obstructions not on roof	N/A	N/A	N/A	N/A
Distance from trees	17	17	17	10
Distance to furnace or incinerator flue	N/A	N/A	N/A	N/A
Distance between collocated monitors	N/A	N/A	N/A	N/A
Unrestricted airflow	Yes	Yes	Yes	Yes
Probe material	Teflon	Teflon	Teflon	N/A
Residence time	8.2	8.3	10.5	N/A
Will there be changes within the next 18 months?	No	No	No	No
Is it suitable for comparison against the annual PM2.5?	N/A	N/A	N/A	N/A

Frequency of flow rate verification for manual PM samplers audit	N/A	N/A	N/A	Monthly
Frequency of flow rate verification for automated PM analyzers audit	N/A	N/A	N/A	Monthly
Frequency of one-point QC check (gaseous)	Nightly	Nightly	Nightly	N/A
Date of last annual performance evaluation	8/10/10	8/10/10	8/10/10	N/A
Dates of semi-annual flow rate audits for PM monitors	N/A	N/A	N/A	Scheduled
	N/A	N/A	N/A	Scheduled
Date of past year's PM2.5-PEP audit	N/A	N/A	N/A	N/A
Date of past year's Pb-PEP audit	N/A	N/A	N/A	N/A

Pollutant	BAM-PM2.5 (Non-FEM)			
Site type	SLAMS			
Monitor objective	Population Exposure			
Spatial scale	Neighborhood Scale			
Instrument type	Non FEM BAM			
Method code	731			
POC code	3			
Instrument manufacturer/model	Met One BAM1020			
Serial #	A2549			
Property #	Sonoma Tech			
Last calibration date	4/1/11			
Analysis method	Beta Attenuation			
Start date	01/17/06			
Operation schedule	1:1			
Sampling season	All Year			
Probe height	2.6			
Distance from supporting structure	N/A			
Distance from obstructions on roof	N/A			
Distance from obstructions not on roof	N/A			
Distance from trees	10			
Distance to furnace or incinerator flue	N/A			
Distance between collocated monitors	N/A			
Unrestricted airflow	Yes			

Probe material	N/A			
Residence time	N/A			
Will there be changes within the next 18 months?	No			
Is it suitable for comparison against the annual PM2.5?	No			
Frequency of flow rate verification for manual PM samplers audit	N/A			
Frequency of flow rate verification for automated PM analyzers audit	Monthly			
Frequency of one-point QC check (gaseous)	N/A			
Date of last annual performance evaluation	N/A			
Dates of semi-annual flow rate audits for PM monitors	Scheduled			
	Scheduled			
Date of past year's PM2.5-PEP audit	N/A			
Date of past year's Pb-PEP audit	N/A			

**Lake Elsinore-W Flint Street
Site Photos**



Looking North from the probe.



Looking East from the probe.



Looking South from the probe.



Looking West from the probe.

**Lake Elsinore-W Flint Street
Site Photos (Cont.)**



Looking at the probe from the North.



Looking at the probe from the East.



Looking at the probe from the South.



Looking at the probe from the West.