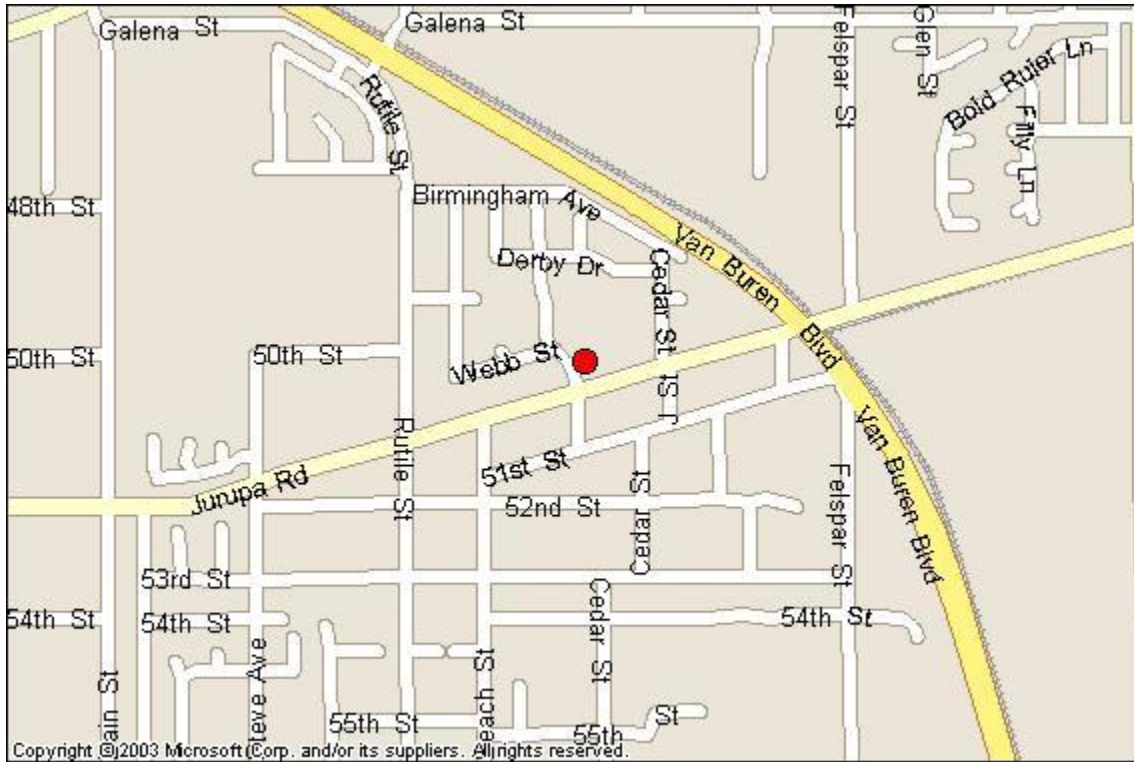


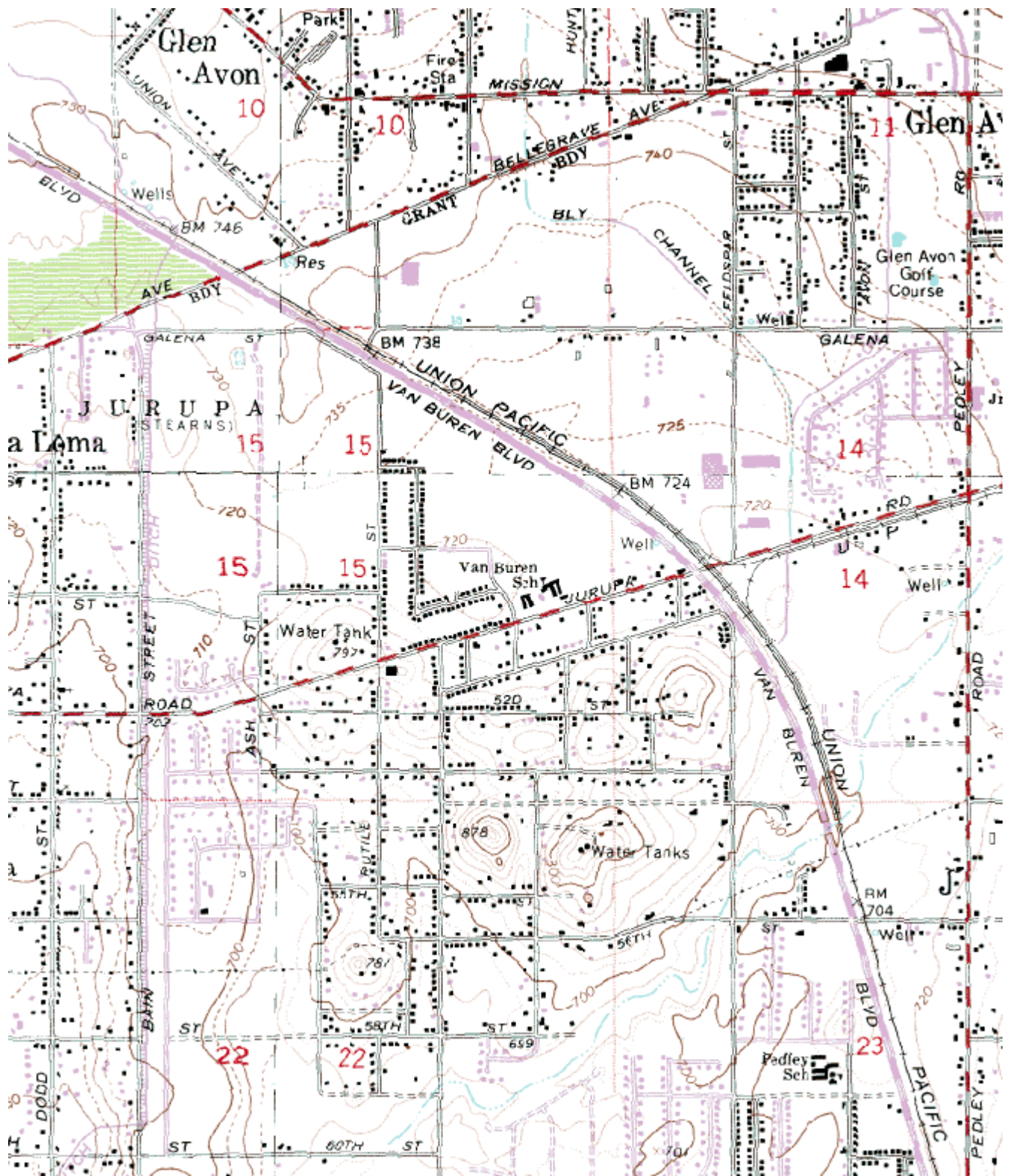
Quality Assurance Site Survey Report for Mira Loma (Van Buren)

Last updated May, 2010



AIRS Number	ARB Number	Site Start Date	Reporting Agency and Agency Code
060658005	33165	11/05	South Coast AQMD (061)

Site Address	County	Air Basin	Latitude	Longitude	Elevation
5130 Poinsettia Pl Riverside, CA 92509	Riverside	South Coast	33° 59' 46"N	117° 29' 32"W	220



Site Survey Report

Siting Information

Site Name: Mira Loma (Van Buren)	Date: 05/26/11	State Code: 33165	AIRS Number: 060658005
Address: 5130 Poinsettia Pl Riverside, CA 92509	Latitude: 33° 59' 46"	Longitude: 117° 29' 32"	Elevation (m): 220
	Senior AQIS: Keith Brown	Site Technician: Lila Enriquez	Site Phone: (951) 381-4773
Operating Agency: South Coast AQMD			

General Siting Conditions

Station Temperature Controlled: Yes Recorded: Yes	Traffic Description: Residential Distance: 14-15 meters Count (Veh/Day): < 1000	Topography Site: Level	Predominant Wind Direction: SW
		Region: Level	Arc Air Flow (Deg): 360 Degrees
		QA Manual Approved: Yes Agency: South Coast Urbanization: Suburban Ground Cover: Gravel	Probe Last Cleaned: 6/11
Manifold Clean: Yes			
Cleaning Schedule: 6 Months			
Auto calibrator Type: Environic 9100			
Meteorology Located With Instruments: Yes Shadowing: No	Non-vehicular Local Sources Description: None Distance: N/A Direction: N/A	Site Survey Complete: Yes	
		Logbook Up To Date: Yes	

Action Items

--

Comments

--

Detailed Site Information

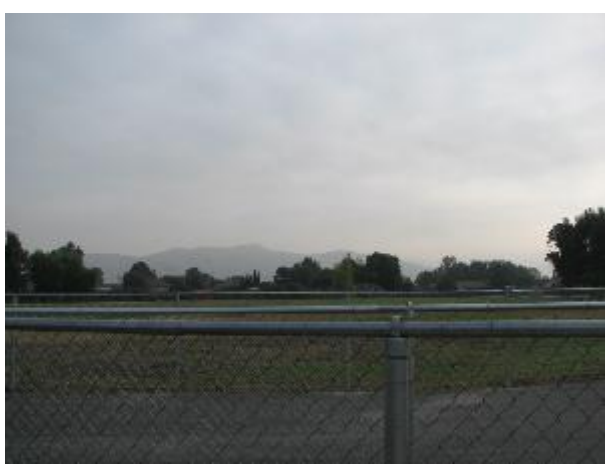
Site name	Mira Loma (Van Buren)			
AQS ID (AIRS #)	060658005			
GIS coordinates	Latitude: 33° 59' 46" Longitude: 117° 29' 32"			
Location	Van Buren Elementary School			
Address	5130 Poinsettia Place, Riverside CA			
County	Riverside			
Distance to road	14 – 15 meters			
Traffic count	< 1000 veh/day			
Groundcover	Gravel			
Representative area	40140-Riverside, San Bernardino-Ontario, CA MSA			
Pollutant	Carbon Monoxide	Nitrogen Dioxide	Ozone	PM10-SSI
Site type	SLAMS	SLAMS	SLAMS	SLAMS
Monitor objective	Population Oriented	Population Oriented	Population Oriented	Highest Concentration
Spatial scale	Neighborhood Scale	Neighborhood Scale	Neighborhood Scale	Neighborhood Scale
Instrument type	Primary	Primary	Primary	Primary
Method code	N/A	N/A	N/A	N/A
POC code	1	1	1	1
Instrument manufacturer/model	Horiba APMA-360	Thermo 42i NO/NO2/NOx	API/Teledyne 400	Tisch 300-310
Serial #	41626140013	CM08360047	192	50953
Property #	0016512	16770	0016586	N/A
Last calibration date	3/5/11	5/11/11	2/28/11	2/24/11
Analysis method	Non dispersive infrared	Chemiluminescence	UV Photometric	Gravimetric
Start date	11/09/05	11/09/05	11/09/05	11/09/05
Operation schedule	1:1	1:1	1:1	1:6
Sampling season	All Year	All Year	All Year	All Year
Probe height	4.4	4.4	4.4	2.6
Distance from supporting structure	1.8	1.8	1.8	1.6
Distance from obstructions on roof	N/A	N/A	N/A	N/A
Distance from obstructions not on roof	N/A	N/A	N/A	N/A
Distance from trees	36	36	36	36
Distance to furnace or incinerator flue	N/A	N/A	N/A	N/A
Distance between collocated monitors	N/A	N/A	N/A	2
Unrestricted airflow	Yes	Yes	Yes	Yes
Probe material	Teflon	Teflon	Teflon	N/A
Residence time	13.9	14.9	14.5	N/A
Will there be changes within the next 18 months?	No	No	No	No
Is it suitable for comparison against the annual PM2.5?	N/A	N/A	N/A	N/A

Frequency of flow rate verification for manual PM samplers audit	N/A	N/A	N/A	Monthly
Frequency of flow rate verification for automated PM analyzers audit	N/A	N/A	N/A	N/A
Frequency of one-point QC check (gaseous)	Nightly	Nightly	Nightly	N/A
Date of last annual performance evaluation	11/19/2010	11/19/2010	11/19/2010	N/A
Dates of semi-annual flow rate audits for PM monitors	N/A	N/A	N/A	6/2/10
	N/A	N/A	N/A	12/20/10
Date of past year's PM2.5-PEP audit	N/A	N/A	N/A	N/A
Date of past year's Pb-PEP audit	N/A	N/A	N/A	N/A

Pollutant	BAM-PM2.5 (FEM)	Andersen PM2.5 RAAS	FEM BAM – PM10	
Site type	SLAMS	SLAMS	SLAMS	
Monitor objective	Population Oriented	Population Oriented	Highest Concentration	
Spatial scale	Neighborhood Scale	Neighborhood Scale	Neighborhood Scale	
Instrument type	Audit	Primary	Audit	
Method code	170	N/A	122	
POC code	3	1	3	
Instrument manufacturer/model	MetOne BAM1020 FEM PM2.5	FRM PM2.5 RAAS	MetOne BAM 1020 FEM PM10	
Serial #	H3184	2.5-300-00434	D3924	
Property #	16718	N/A	166620 – USC	
Last calibration date	3/10/11	09/14/10	3/10/11	
Analysis method	Beta attenuation	Gravimetric	Beta Attenuation	
Start date	11/09/05	12/07/05	03/08/10	
Operation schedule	1:1	1:3	1:1	
Sampling season	All Year	All Year	All Year	
Probe height	4.5	2.9	4.5	
Distance from supporting structure	1.9	1.9	1.9	
Distance from obstructions on roof	N/A	N/A	N/A	
Distance from obstructions not on roof	N/A	N/A	N/A	
Distance from trees	N/A	N/A	N/A	
Distance to furnace or incinerator flue	N/A	N/A	N/A	
Distance between collocated monitors	2	2	2	
Unrestricted airflow	Yes	Yes	Yes	

Probe material	N/A	N/A	N/A	
Residence time	N/A	N/A	N/A	
Will there be changes within the next 18 months?	No	No	No	
Is it suitable for comparison against the annual PM2.5?	No	Yes	No	
Frequency of flow rate verification for manual PM samplers audit	N/A	Monthly	N/A	
Frequency of flow rate verification for automated PM analyzers audit	Monthly	N/A	Monthly	
Frequency of one-point QC check (gaseous)	N/A	N/A	N/A	
Date of last annual performance evaluation	N/A	N/A	N/A	
Dates of semi-annual flow rate audits for PM monitors	Scheduled	6/2/10	Scheduled	
	Scheduled	12/20/10	Scheduled	
Date of past year's PM2.5-PEP audit	N/A	3/9/10	N/A	
Date of past year's Pb-PEP audit	N/A	N/A	N/A	

**Mira Loma (Van Buren)
Site Photos**



Looking North from the probe.



Looking East from the probe.



Looking South from the probe.



Looking West from the probe.

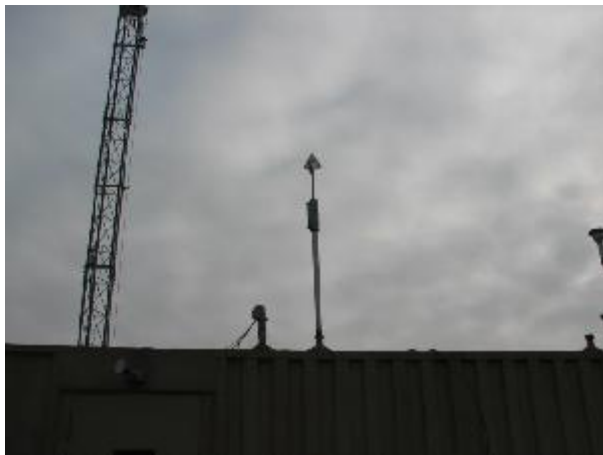
**Mira Loma (Van Buren)
Site Photos (Cont.)**



Looking at the probe from the North.



Looking at the probe from the East.



Looking at the probe from the South.



Looking at the probe from the West.