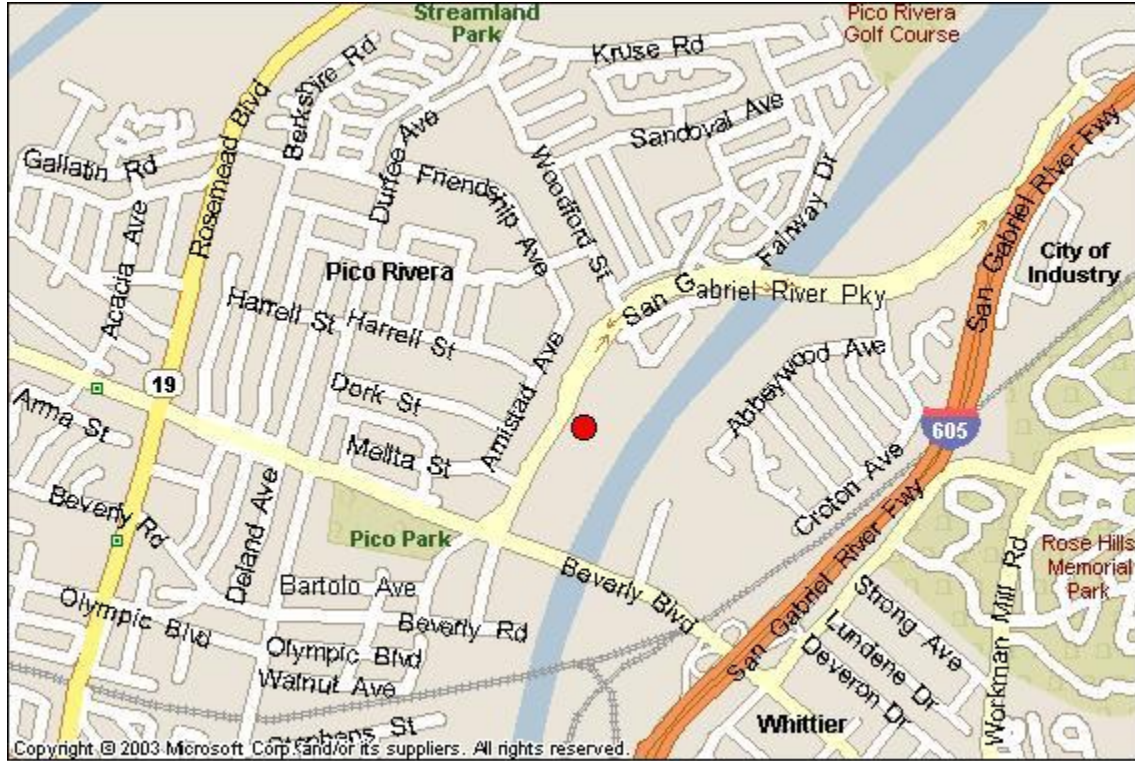
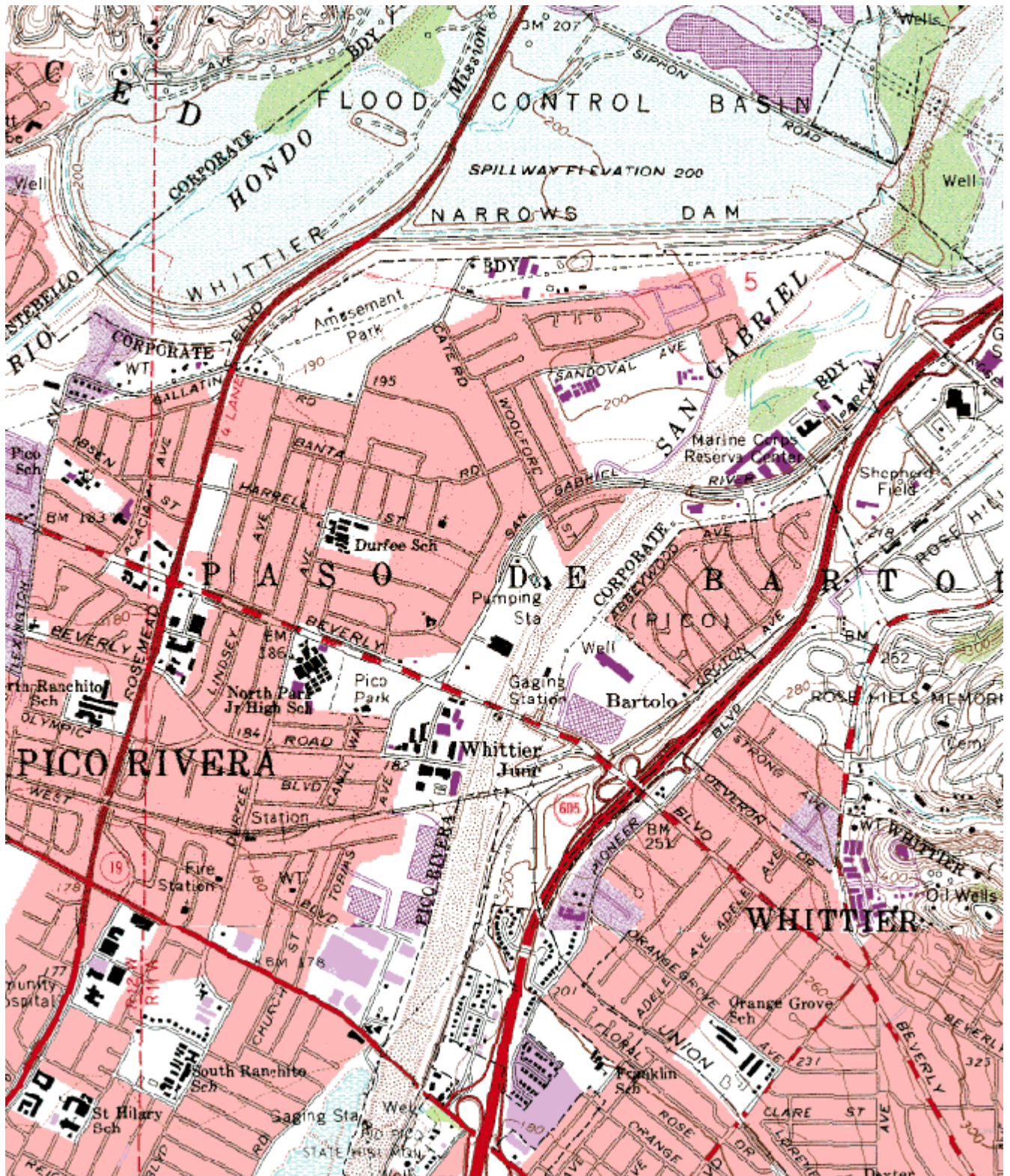


Quality Assurance Site Survey Report for Pico Rivera #2

Last updated May, 2011



AIRS Number	ARB Number	Site Start Date	Reporting Agency and Agency Code			
060371602	70185	09/05	South Coast AQMD (061)			
Site Address		County	Air Basin	Latitude	Longitude	Elevation
4144 San Gabriel River Pkwy Pico Rivera, CA 90660		Los Angeles	South Coast	34° 0' 37"N	118° 04' 07"W	58



Site Survey Report

Siting Information

Site Name: Pico Rivera #2	Date: 5/26/11	State Code: 70185	AIRS Number: 060371602
Address: 4144 San Gabriel River Pkwy. Pico Rivera, CA 90660	Latitude: 34° 0' 37"	Longitude: 118° 04' 07"	Elevation (m): 58
	Senior AQIS: Albert Dietrich	Site Technician: Tom Mac	Site Phone: (562)478-1961
Operating Agency: South Coast AQMD			

General Siting Conditions

Station Temperature Controlled: Yes Recorded: Yes	Traffic Description: Arterial Distance: 35 - 41 meters Count (Veh/Day): 20,000	Topography Site: Level Region: Valley	Predominant Wind Direction: SE Arc Air Flow (Deg): 360 Degrees Probe Last Cleaned: 6/11		
		Meteorology Located With Instruments: Yes	Non-vehicular Local Sources Description: Unpaved Parking Distance: 4 – 9 m Direction: NE	QA Manual Approved: Yes Agency: South Coast AQMD	Manifold Clean: Yes Cleaning Schedule: 6 Months Autocalibrator Type: Environics 100 (S/N 1343)
				Urbanization: Suburban	Site Survey Complete: Yes
Ground Cover: Asphalt	Logbook Up To Date: Yes				

Action Items

Comments

Detailed Site Information

Site name	Pico Rivera #2			
AQS ID (AIRS #)	060371602			
GIS coordinates	Latitude: 34° 0' 37" Longitude: 118° 04' 07"			
Location	Water District Property			
Address	4144 San Gabriel River Pkwy, Pico Rivera, CA			
County	Los Angeles			
Distance to road	35 – 41 meters			
Traffic count	20,000 veh/day			
Groundcover	Asphalt			
Representative area	31100-Los Angeles, Long Beach-Santa Ana, CA MSA			
Pollutant	Carbon Monoxide	Nitrogen Dioxide	Ozone	TSP (Lead)
Site type	SLAMS	SLAMS	SLAMS	SLAMS
Monitor objective	Population Oriented	Highest Concentration	Highest Concentration	Population Oriented
Spatial scale	Neighborhood Scale	Neighborhood Scale	Neighborhood Scale	Neighborhood Scale
Instrument type	Primary	Primary	Primary	Primary
Method code	N/A	N/A	N/A	N/A
POC code	1	1	1	1
Instrument manufacturer/model	Horiba 370	Thermo 42i	API/Teledyne 400	Tisch TE 300-310
Serial #	E000361	CM08360032	535-S	1546
Property #	D0006DUU	16721	N/A	N/A
Last calibration date	4/29/11	3/23/11	4/5/11	4/28/11
Analysis method	Non dispersive infrared	Chemiluminescence	UV Photometric	Gravimetric
Start date	9/05	9/05	09/05	09/05
Operation schedule	1:1	1:1	1:1	1:6
Sampling season	All Year	All Year	All Year	All Year
Probe height	4.5	4.5	4.5	2.11
Distance from supporting structure	1.8	1.8	1.8	1.12
Distance from obstructions on roof	N/A	N/A	N/A	N/A
Distance from obstructions not on roof	N/A	N/A	N/A	N/A
Distance from trees	N/A	N/A	N/A	N/A
Distance to furnace or incinerator flue	9	9	9	4
Distance between collocated monitors	N/A	N/A	N/A	N/A
Unrestricted airflow	Yes	Yes	Yes	Yes
Probe material	Teflon	Teflon	Teflon	N/A
Residence time	6.7	6.5	6.8	N/A
Will there be changes within the next 18 months?	No	No	No	No
Is it suitable for comparison against the annual PM2.5?	N/A	N/A	N/A	N/A

Frequency of flow rate verification for manual PM samplers audit	N/A	N/A	N/A	Monthly
Frequency of flow rate verification for automated PM analyzers audit	N/A	N/A	N/A	N/A
Frequency of one-point QC check (gaseous)	Nightly	Nightly	Nightly	N/A
Date of last annual performance evaluation	5/5/11	5/5/11	5/5/11	N/A
Dates of semi-annual flow rate audits for PM monitors	N/A	N/A	N/A	3/16/10, 5/25/10
	N/A	N/A	N/A	9/27/10, 10/27/10
Date of past year's PM2.5-PEP audit	N/A	N/A	N/A	N/A
Date of past year's Pb-PEP audit	N/A	N/A	N/A	Scheduled

Pollutant	PM2.5 RAAS	Xontech 910A VOCs PAMS 24 hour (A)	Xontech 910A VOCs PAMS 24 hour (B)	Carbonyl ATEC 8000
Site type	SLAMS	PAMS	PAMS	PAMS
Monitor objective	Population Oriented	Population Exposure	Population Exposure	Population Exposure
Spatial scale	Neighborhood Scale	Neighborhood Scale	Neighborhood Scale	Neighborhood Scale
Instrument type	Primary	Primary PAMS	Audit PAMS	Primary PAMS
Method code	N/A	N/A	N/A	N/A
POC code	1	1	1	1
Instrument manufacturer/model	Sierra Andersen RAAS PM2.5	Xontech 910A	Xontech 910A	Xontech 910A
Serial #	00511	5740	4145	30427
Property #	E000019	E000304	15465	E000412
Last calibration date	9/8/10	10/12/10	10/12/10	11/12/10
Analysis method	Gravimetric	TO-14 PAMS	TO-14 PAMS	TO14 PAMS
Start date	09/05	6/1994	6/1994	6/1994
Operation schedule	1:3	1:6	1:6	1:6 or intensive PAMS
Sampling season	All Year	All Year	All Year	All Year
Probe height	2.84	4.5	4.5	4.5
Distance from supporting structure	1.83	2	2	2
Distance from obstructions on roof	N/A	N/A	N/A	N/A
Distance from obstructions not on roof	N/A	N/A	N/A	N/A
Distance from trees	N/A	N/A	N/A	N/A
Distance to furnace or incinerator flue	4	N/A	N/A	N/A
Distance between collocated monitors	N/A	N/A	N/A	N/A

Unrestricted airflow	Yes	Yes	Yes	Yes
Probe material	N/A	SS	SS	SS
Residence time	N/A	< 20sec	< 20sec	< 20sec
Will there be changes within the next 18 months?	No	No	No	No
Is it suitable for comparison against the annual PM2.5?	Yes	N/A	N/A	N/A
Frequency of flow rate verification for manual PM samplers audit	Monthly	N/A	N/A	N/A
Frequency of flow rate verification for automated PM analyzers audit	N/A	N/A	N/A	N/A
Frequency of one-point QC check (gaseous)	N/A	N/A	N/A	N/A
Date of last annual performance evaluation	N/A	N/A	N/A	N/A
Dates of semi-annual flow rate audits for PM monitors	5/25/10	N/A	N/A	N/A
	10/27/10	N/A	N/A	N/A
Date of past year's PM2.5-PEP audit	Scheduled	N/A	N/A	N/A
Date of past year's Pb-PEP audit	N/A	N/A	N/A	N/A

Pollutant	Carbonyl ATEC 8000			
Site type	PAMS			
Monitor objective	Population Exposure			
Spatial scale	Neighborhood Scale			
Instrument type	Primary PAMS			
Method code	N/A			
POC code	1			
Instrument manufacturer/model	Xontech 910A			
Serial #	30422			
Property #	E000408			
Last calibration date	11/12/10			
Analysis method	TO14 PAMS			
Start date	6/1994			
Operation schedule	1:6 or intensive PAMS			
Sampling season	All Year			
Probe height	4.5			
Distance from supporting structure	2			
Distance from obstructions on roof	N/A			

Distance from obstructions not on roof	N/A			
Distance from trees	N/A			
Distance to furnace or incinerator flue	N/A			
Distance between collocated monitors	N/A			
Unrestricted airflow	Yes			
Probe material	SS			
Residence time	< 20sec			
Will there be changes within the next 18 months?	No			
Is it suitable for comparison against the annual PM2.5?	N/A			
Frequency of flow rate verification for manual PM samplers audit	N/A			
Frequency of flow rate verification for automated PM analyzers audit	N/A			
Frequency of one-point QC check (gaseous)	N/A			
Date of last annual performance evaluation	N/A			
Dates of semi-annual flow rate audits for PM monitors	N/A			
	N/A			
Date of past year's PM2.5-PEP audit	N/A			
Date of past year's Pb-PEP audit	N/A			

**Pico Rivera #2
Site Photos**



Looking North from the probe.



Looking East from the probe.



Looking South from the probe.



Looking West from the probe.

**Pico Rivera #2
Site Photos (Cont.)**



Looking at the probe from the North.



Looking at the probe from the East.



Looking at the probe from the South.



Looking at the probe from the West.