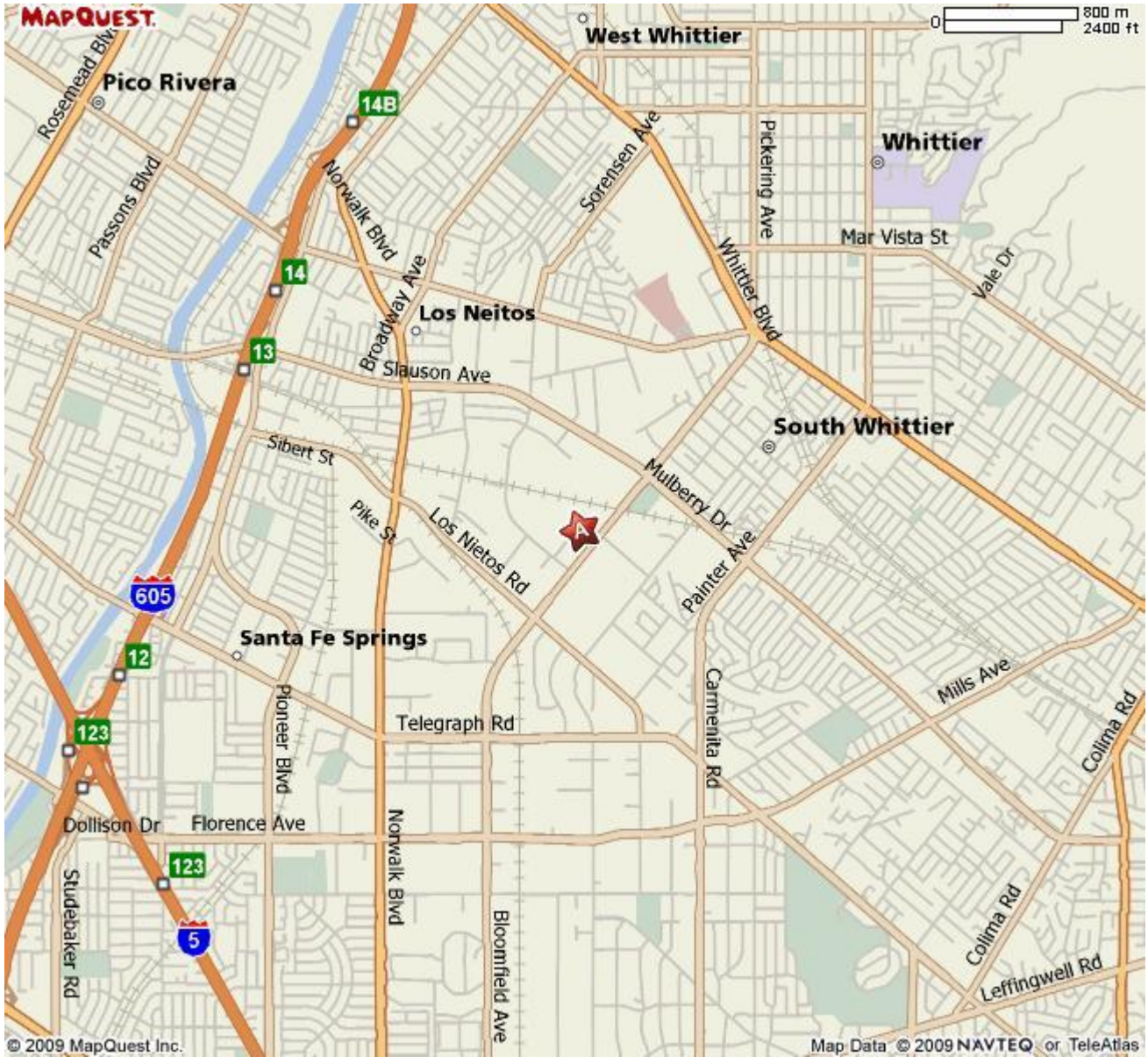


Quality Assurance Site Survey Report for Uddeholm (Quemetco)

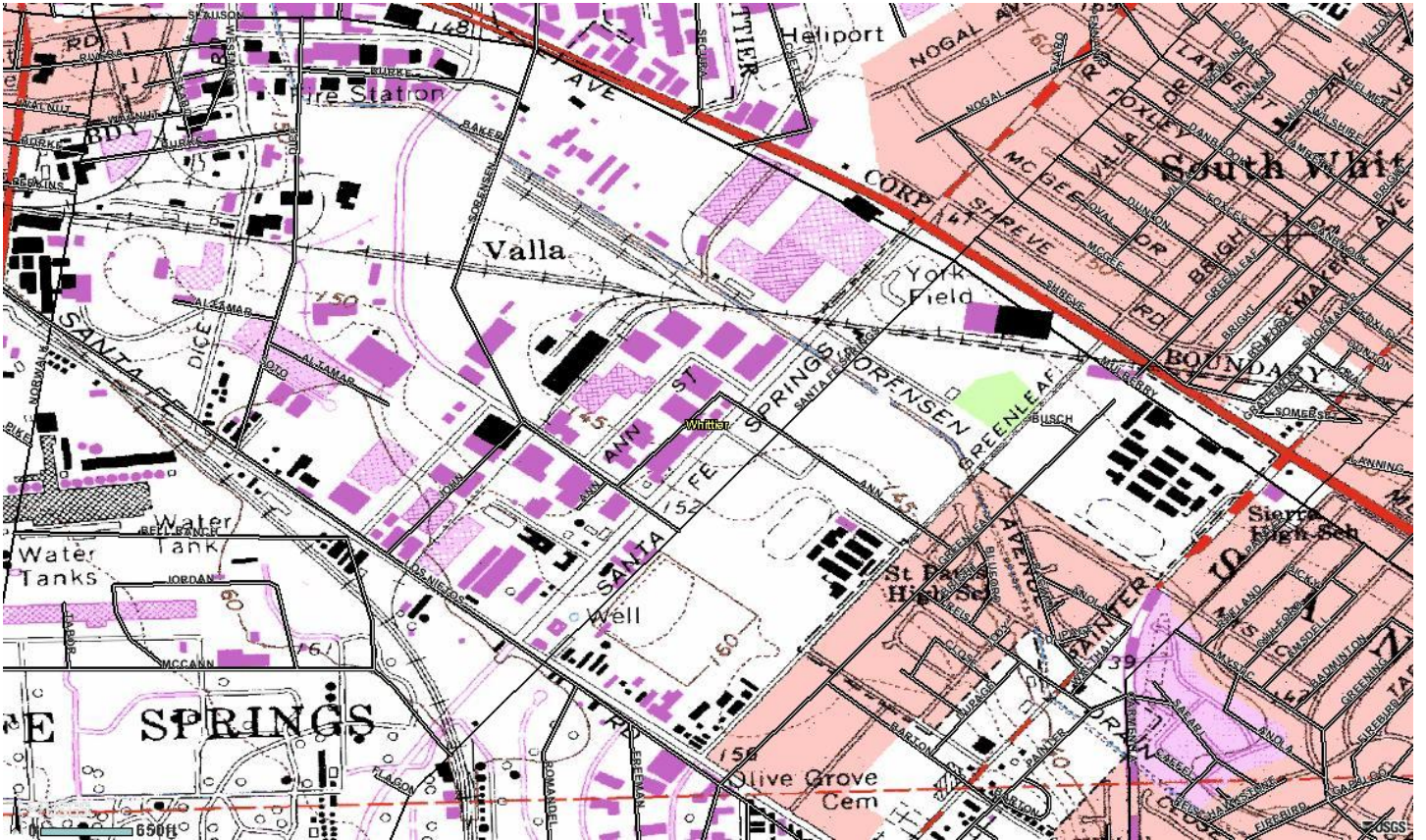
Last updated May, 2010



AIRS Number	ARB Number	Site Start Date	Reporting Agency and Agency Code
060371403	70045	11/26/92	South Coast AQMD (061)

Site Address	County	Air Basin	Latitude	Longitude	Elevation
9440 Ann St. Santa Fe Springs, CA 90670	Los Angeles	South Coast	33° 57' 17"N	118° 03' 19"W	44 m

Site Survey Report



Siting Information

Site Name: Uddeholm (Trojan Battery)	Date: 5/27/11	State Code: 70045	AIRS Number: 060371403
Address: 9440 Ann St. Santa Fe Springs, CA 90670	Latitude: 33° 57' 17"	Longitude: 118° 03' 19"	Elevation (m): 44
	Senior AQIS: Albert Dietrich	Site Technician: Tuong Mac	Site Phone: N/A
Operating Agency: South Coast AQMD			

General Siting Conditions

Station Temperature	Traffic	Topography	Predominant Wind Direction: W
		Site: Level	Arc Air Flow (Deg): 360
		Region: Level	Probe Last Cleaned Date: N/A
Meteorology	Non-vehicular Local Sources	QA Manual	Manifold Clean: N/A
		Approved: Yes	Cleaning Schedule: N/A
		Agency: South Coast AQMD	Autocalibrator Type: N/A
		Urbanization: Suburban	Site Survey Complete: Yes
		Ground Cover: Asphalt	Logbook Up To Date: Yes
Controlled: No	Description: Suburban		
Recorded: No	Distance: 26		
	Count (Veh/Day): 30000		
	Description: Lead Smelter		
	Distance: 38		
	Direction: SW		

Action Items

Comments

Detailed Site Information

Site name	Uddeholm (Trojan Battery)			
AQS ID (AIRS #)	060371403			
GIS coordinates	Latitude: 33° 57' 17" Longitude: 118° 03' 19"			
Location	Parking lot			
Address	9440 Ann St. Santa Fe Springs, CA 90670			
County	Los Angeles			
Distance to road	26			
Traffic count	30000			
Groundcover	Asphalt			
Representative area	31100-Los Angeles-Long Beach-Santa Ana			
Pollutant	TSP Pb			
Site type	SLAMS			
Monitor objective	Source Impact			
Spatial scale	Microscale			
Instrument type	Primary			
Method code	N/A			
POC code	1			
Instrument manufacturer/model	GMW TSP			
Serial #	NA			
Property #	4903			
Last calibration date	1/4/11			
Analysis method	Inductively Coupled Argon Plasma-Mass Spectrometry			
Start date	11/26/92			
Operation schedule	1:6			
Sampling season	All Year			
Probe height	2.6			
Distance from supporting structure	N/A			
Distance from obstructions on roof	N/A			
Distance from obstructions not on roof	N/A			
Distance from trees	N/A			
Distance to furnace or incinerator flue	N/A			
Distance between collocated monitors	N/A			
Unrestricted airflow	Yes			
Probe material	N/A			
Residence time	N/A			
Will there be changes within the next 18 months?	No			
Is it suitable for comparison against the annual PM2.5?	N/A			

Frequency of flow rate verification for manual PM samplers audit	Monthly			
Frequency of flow rate verification for automated PM analyzers audit	N/A			
Frequency of one-point QC check (gaseous)	N/A			
Date of last annual performance evaluation	N/A			
Dates of semi-annual flow rate audits for PM monitors	3/10, 5/25/10			
	9/28, 12/21/10			
Date of past year's PM2.5-PEP audit	N/A			
Date of past year's Pb-PEP audit	Scheduled			

**Trojan Battery - UDDH
Site Photos**



Looking North from the probe



Looking East from the probe.



Looking South toward the probe.



Looking West from the probe