



+
o •

Fumigation Facilities in South Los Angeles County

March 20, 2025



Introduction

Previous Meeting on Methyl Bromide in West Long Beach January 30, 2025

California Air Resources Board (CARB) monitored levels of Methyl Bromide in response to community concerns regarding fumigation facilities

CARB hosted an initial meeting to discuss the monitoring data and work by multiple agencies to address Methyl Bromide emissions

Today's Meeting on Fumigation Facilities in South Los Angeles County March 20, 2025

- Provide additional information
- Outline next steps
- Answer questions

Background on Fumigation

- Commodity fumigation is conducted near ports for pest control before and after shipping
 - Most facilities are permitted by LA County Agricultural Commissioner
 - Three fumigation facilities are permitted by South Coast AQMD under the Title V program
 - Fumigant use regulated by Department of Pesticide Regulation
- Initial investigation focused on two large fumigation facilities



Fumigants Used and Health Effects

- Exposure to fumigants may cause non-cancer health effects*
- Non-cancer health effects are not expected when pollutant levels are below the Reference Exposure Level
- When pollutants are above Reference Exposure Levels, the greater the exposure, the more likely someone may have health effects
- Current information indicates that most risks from fumigation in LA County are from methyl bromide

When exposed above Reference Exposure Levels, non-cancer health effects can include impacts to respiratory, developmental, nervous, cardiovascular, and gastrointestinal systems

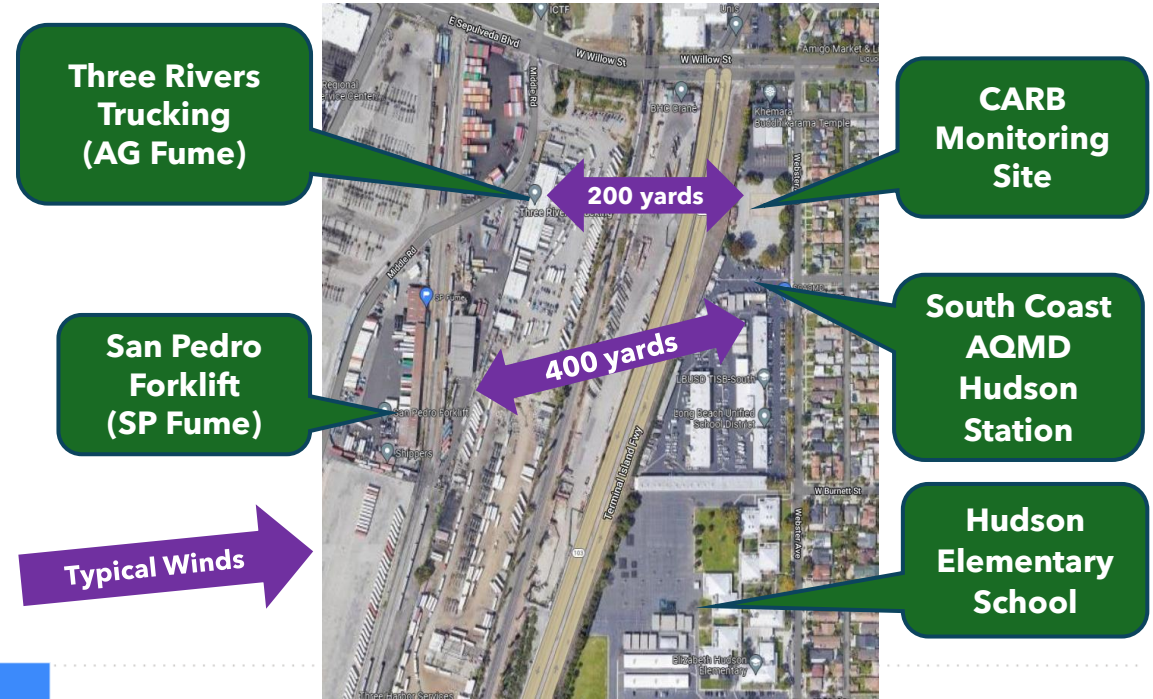
Fumigants Used
Methyl Bromide
Aluminum Phosphide
Magnesium Phosphide
Sulfuryl Fluoride**

* OEHHA has not developed any cancer unit risk factors for air district use for fumigants shown here

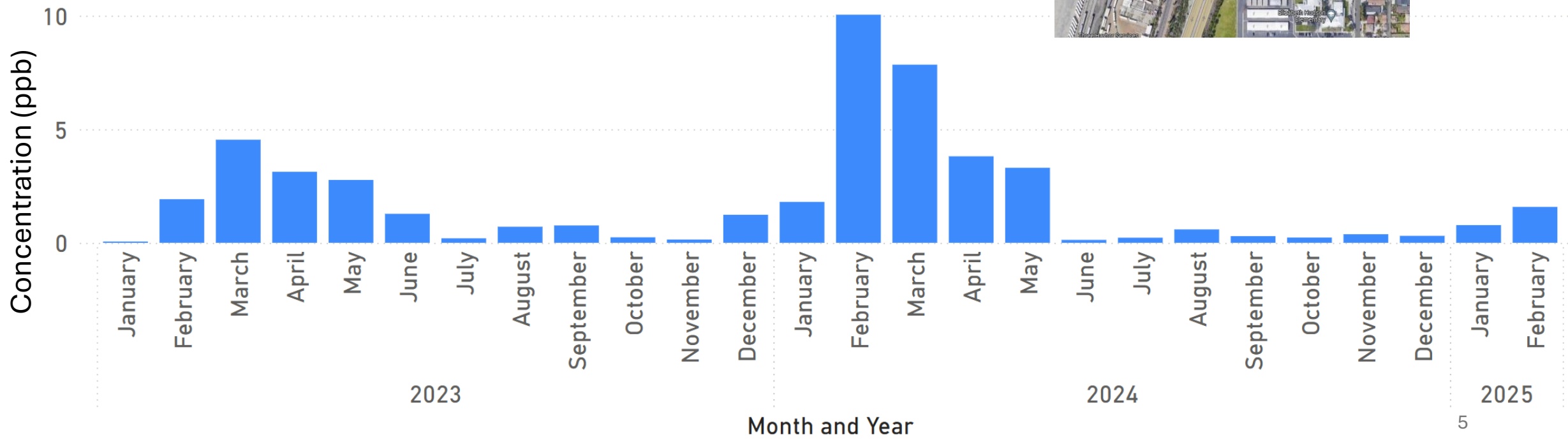
** OEHHA has not developed any cancer or non-cancer health reference levels for air district use from sulfuryl fluoride

California Air Resource Board Methyl Bromide Monitoring (Jan 2023– Feb 2025)

- 2-year average concentration at monitor is 1.5 x higher than Reference Exposure Level (Hazard Index = 1.5)
- Elevated levels typically occur between 6PM and Midnight



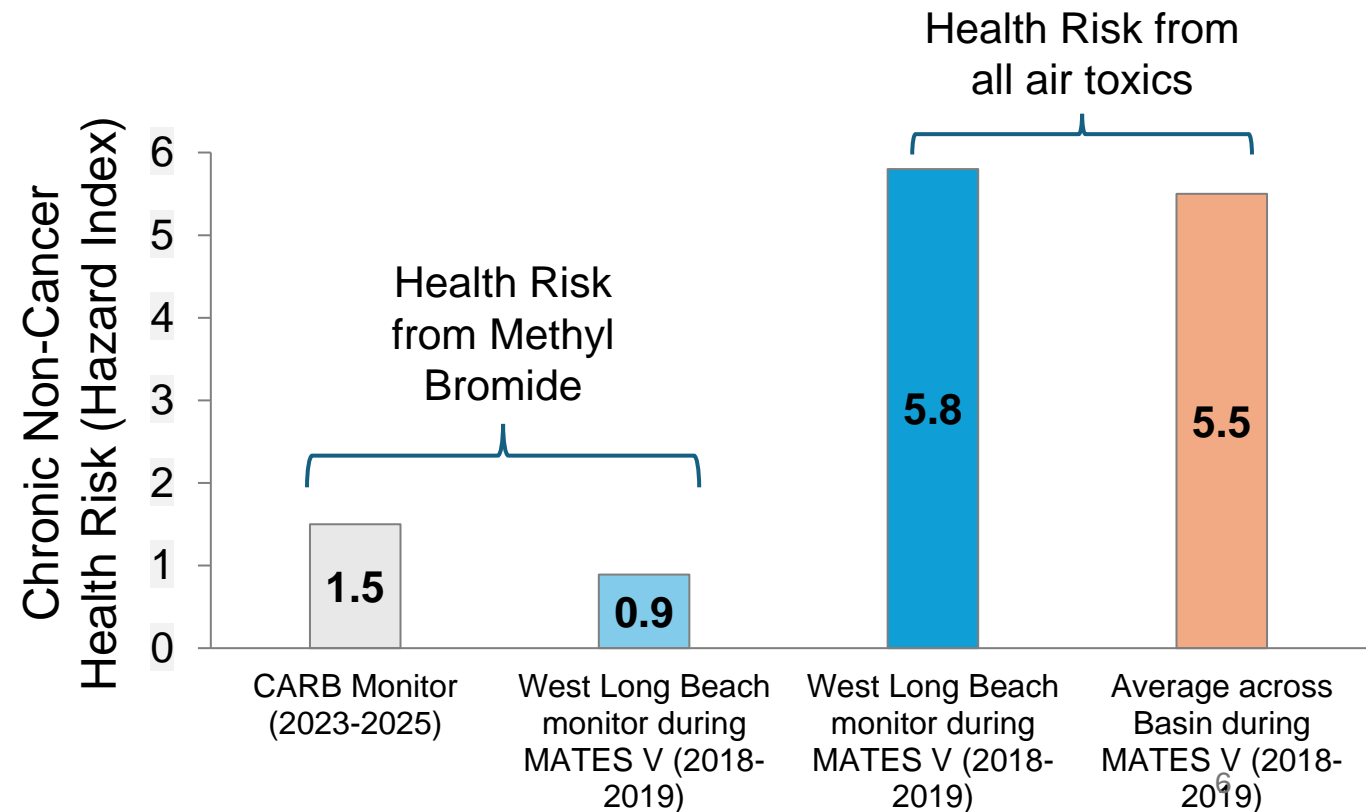
Average Monthly Methyl Bromide Concentration (ppb)



Interpreting the Risk Posed to the Community

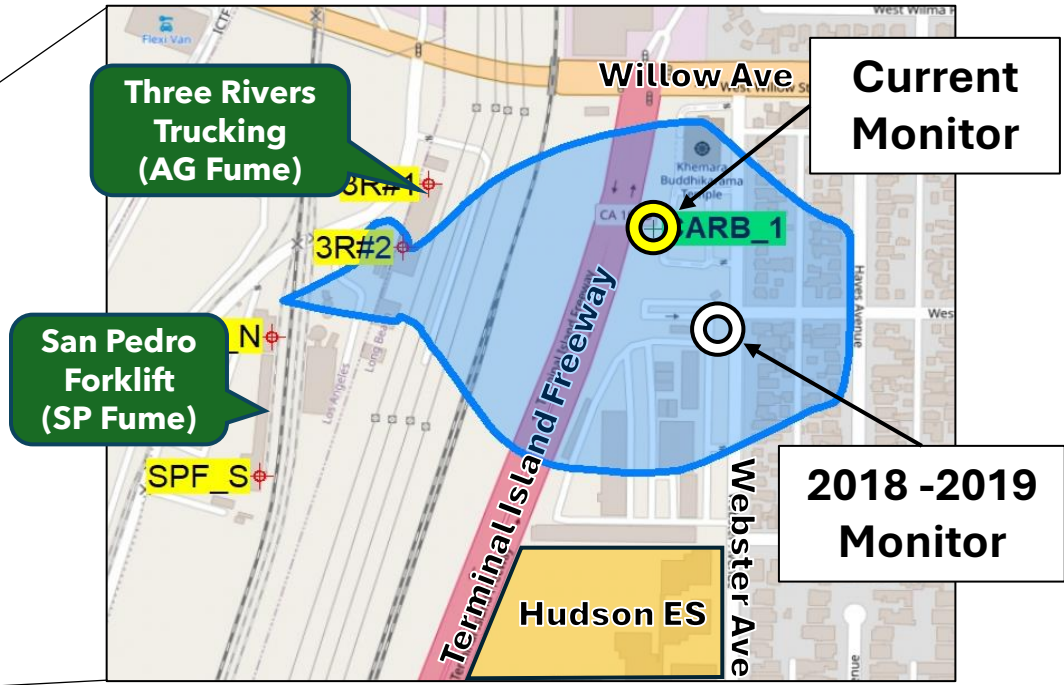
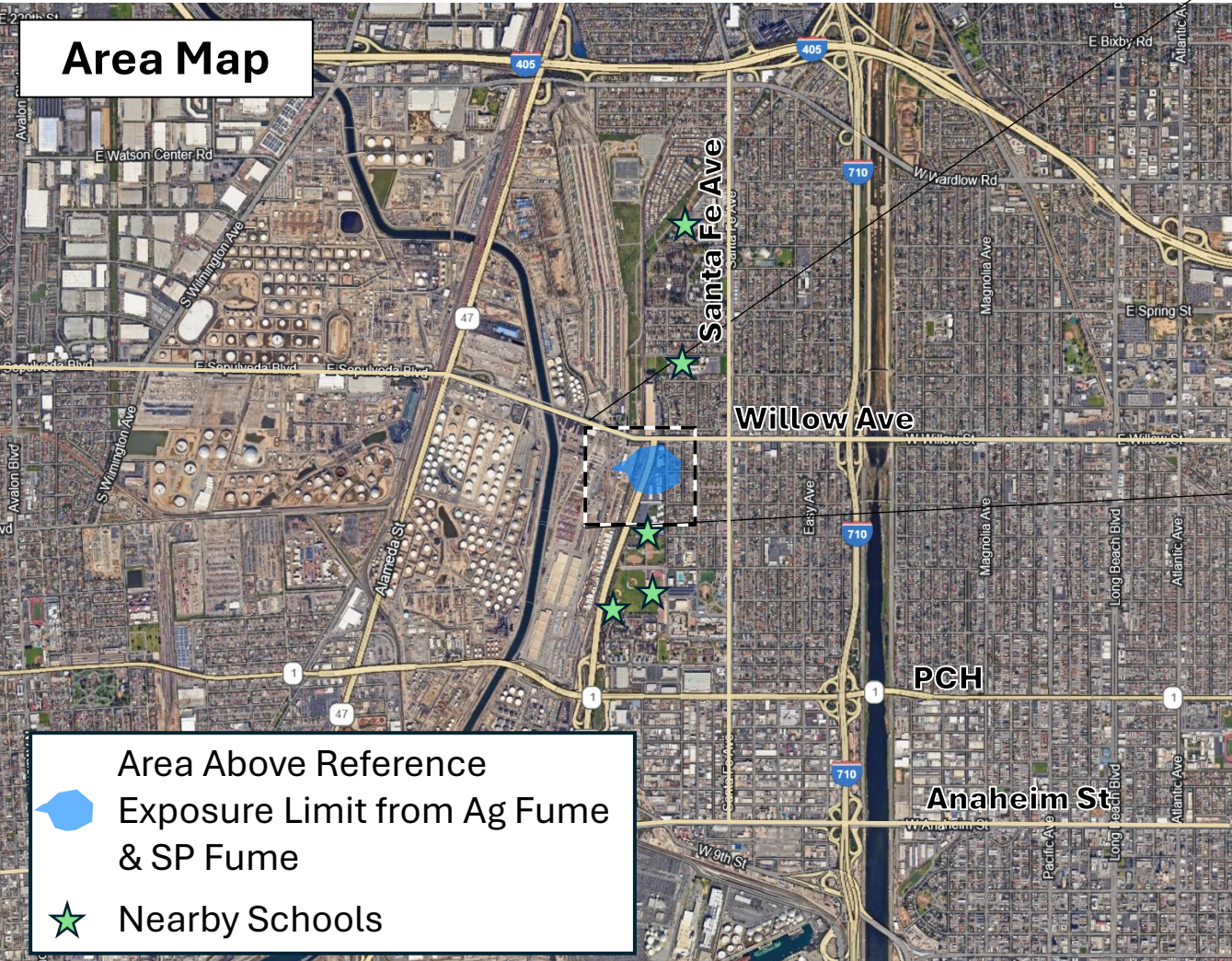


- Multiple Air Toxics Exposure Study V (MATES V) conducted by South Coast AQMD and published in 2021
 - Measured more than 100 air toxics, including Methyl Bromide
- Methyl Bromide during MATES V in West Long Beach neighborhood was below Reference Exposure Level, but higher than other sites



Modeled Area With Potential for Health Impacts

Department of Pesticide Regulation Modeling of Areas Above Reference Exposure Limit From SP Fume and Ag Fume 2023-2024 Emissions



- Areas outside blue zone not expected to have any adverse health impacts from Ag Fume or SP Fume

Recent Regulatory Actions Regarding Ag Fume and SP Fume

- LA County Agricultural Commissioner updated permit conditions to reduce exposure
 - No fumigation during school hours
 - Increased stack heights to reduce ground-level Methyl Bromide levels
 - Additional leak prevention measures
 - Facilities must schedule activities to avoid overlapping fumigation periods

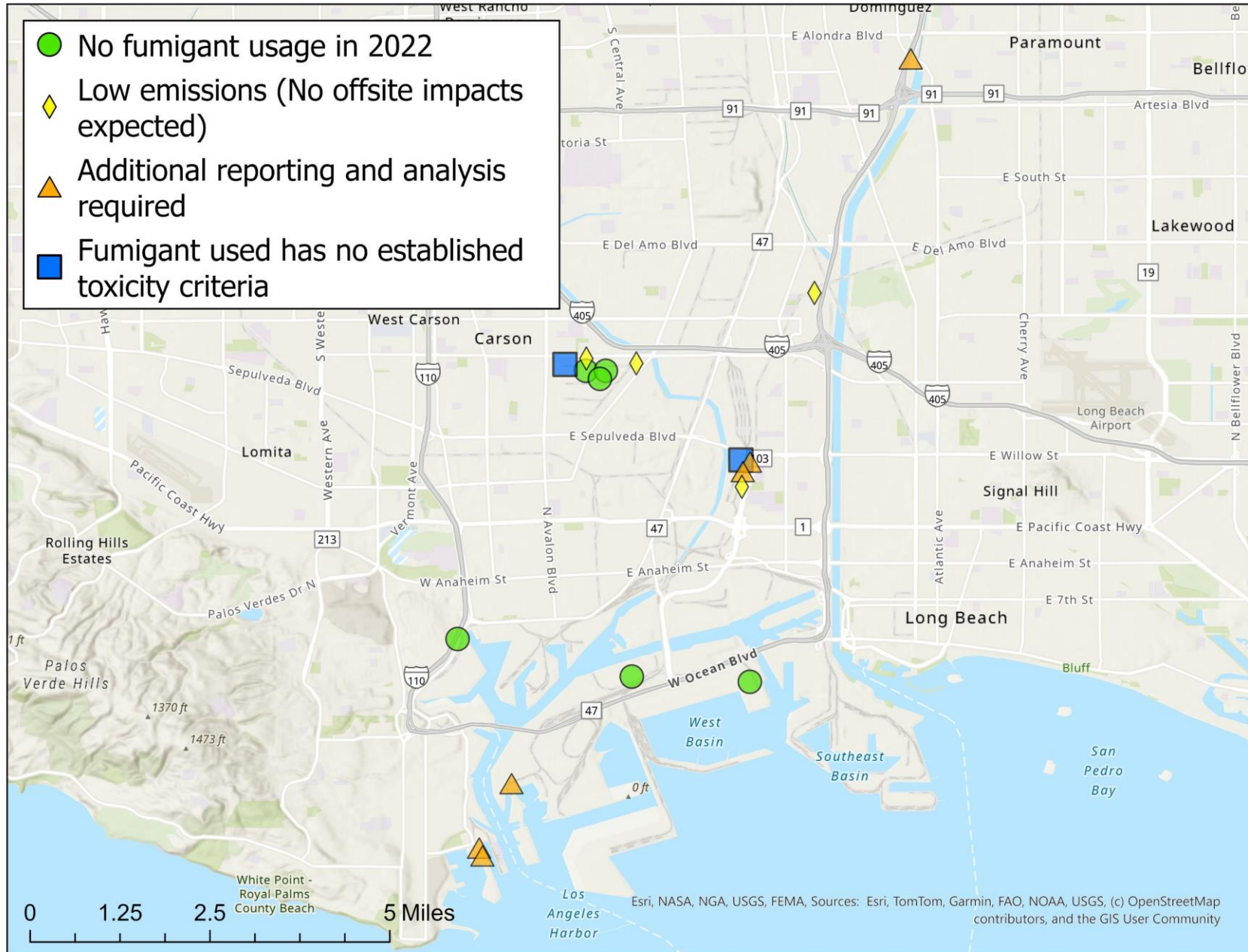
- South Coast AQMD implementation of Air Toxics Hot Spots program
 - Requires comprehensive report detailing all air toxic emissions
 - Reports submitted by facilities in early March and are under review
 - Health risk assessment and additional risk reduction may be required

Analysis of Other Fumigation Facilities in LA County

- LA County Agricultural Commissioner identified other fumigation facilities in the region
 - Facilities use Methyl Bromide and other fumigants
- South Coast AQMD used criteria under its Air Toxics program* to prioritize facilities
 - Fumigant usage
 - Fumigant toxicity
 - Distance to nearby residents/businesses
 - Local meteorology

* Facility Prioritization Procedure for the Rule 1402 Implementation of the AB 2588 Program

Analysis of All Fumigation Facilities Based on 2022 Emissions



Commodity Fumigation Facilities in South LA County

Row	Facility or Operator	Address	Fumigant Used	Total Usage in 2022 (lbs)	Category
1	Global Pest Management	155 Cannery Street, Terminal Island	Methyl Bromide Sulfuryl Flouride	15,098 5,124	⚠ Rule 1402 Requirements Triggered
2	Global Pest Management	1409 S. Sportman Dr, Compton	Methyl Bromide	11,626	⚠ Rule 1402 Requirements Triggered
3	Harbor Fumigation‡	2200 Miner Street, San Pedro	Methyl Bromide	20,803.5	⚠ Rule 1402 Requirements Triggered
4	Ag-Fume Services‡	2200 Miner Street, San Pedro	Methyl Bromide	19,888	⚠ Rule 1402 Requirements Triggered
5	Ag-Fume Services	2300 W Willow Street, Long Beach	Methyl Bromide	5,736.39	⚠ Rule 1402 Requirements Triggered
6	SPF Terminals	2418 E Sepulveda Ave, Long Beach	Methyl Bromide	4,883	⚠ Rule 1402 Requirements Triggered
7	Global Pest Management	1483 West Via Plata St., Long Beach	Methyl Bromide Sulfuryl Flouride	6,589 2,198	◇ Low Priority
8	Global Pest Management	1071 East 223rd Street, Carson	Methyl Bromide	4,370.25	◇ Low Priority
9	Ag-Fume Services	2501 West Pacific Coast Highway	Methyl Bromide	1,502	◇ Low Priority
10	Ag-Fume Services	22351 Wilmington Avenue, Carson	Methyl Bromide	1,187.1	◇ Low Priority
11	Ag-Fume Services‡	BERTHS 206 & 207, Long Beach	None	0	● No Fumigant Usage 2022
12	Ag-Fume Services	1035 East Watson Center Road, Carson	None	0	● No Fumigant Usage 2022
13	West Basin Container Terminal*	2050 John S. Gibson Blvd., San Pedro	New in 2023	0	● No Fumigant Usage 2022
14	GPM Logistics*	1160 E. Watson Center Rd, Carson	New in 2025	0	● No Fumigant Usage 2022
15	PCC Logistics*	1245 E. Watson Center Rd, Carson	New in 2024	0	● No Fumigant Usage 2022
16	Total Terminals International*	301 Mediterranean Way, Long Beach	New in 2023	0	● No Fumigant Usage 2022
17	Ecolab	22411 Bonita Street, Carson	Sulfuryl Fluoride	1,250	■ No health values for Sulfuryl Fluoride
18	Ecolab	2401 East Pacific Coast Highway, Wilmington	Sulfuryl Fluoride	New in 2023	■ No health values for Sulfuryl Fluoride

*Identified as the permit holder, but fumigation operator and usage data still being confirmed

‡Permitted by South Coast AQMD under the Title V Program

Upcoming South Coast AQMD Actions

- Continue Methyl Bromide monitoring
 - Provide near real time results on a public web display
 - Evaluate impacts of new permit conditions
- Continue to evaluate impacts from all fumigation facilities
- Six fumigation facilities in LA County required to submit detailed emission inventory
 - Health Risk Assessment may be required
 - If Health Risk Assessment shows risks above South Coast AQMD thresholds, facility may be required to implement controls to reduce risk

Upcoming South Coast AQMD Actions (cont.)

- Staff exploring possibility of rule development to address fumigation facilities
- South Coast AQMD and LA County Agricultural Commissioner are exploring the future role of existing MOU that specifies each agency's role with permitting
- Continue to provide information about these efforts

Visit: <http://www.aqmd.gov/home/news-events/community-investigations>

Public Discussion and Questions

- Raise your hand or enter questions and concerns using the Q&A button on Zoom
- For more in-depth conversations with South Coast AQMD staff, virtual “office hours” will be available during the following times:



<https://bit.ly/MeBr32125>

Friday, March 21st from 1 to 2 PM



<https://bit.ly/MeBr32525>

Tuesday, March 25th from 10 to 11 AM

South Coast AQMD Contacts



Dr. Sarah Rees
Deputy Executive Officer
Planning, Rule Development & Implementation
srees@aqmd.gov

Lisa Tanaka
Deputy Executive Officer & Public Advisor
Legislative, Public Affairs & Media
lomalley@aqmd.gov