

## Chapter 3: Community Profile

### Introduction

It is essential to understand the characteristics of a community and the profile of air pollution sources in order to address community air quality priorities. The following community profile provides a general overview of the East Los Angeles, Boyle Heights, West Commerce (ELABHWC) community, including the types of air pollution impacting the community, and a characterization of public health and socioeconomic factors. In addition, this section includes information about the community boundary that reflects input from the Community Steering Committee (CSC), a summary of the air pollution concerns identified by the community, and the air quality priorities based on CSC and public input. These air quality priorities are addressed in the Community Emission Reduction Plan (CERP) actions, described in Chapter 5.

#### Chapter 3 Highlights

- The community profile is based on input from the Community Steering Committee throughout the CERP development process
- The Community Steering Committee identified the top air quality priorities to be addressed in the CERP
- Data on land use, toxic air pollution impacts, public health factors, and social and economic factors in the community provides useful background information
- Information about the sources of air pollution in this community is presented in a “source attribution” analysis [currently under development]

### Community Boundary, Air Quality Concerns and Air Quality Priorities

During monthly CSC meetings, committee members, members of the public, and South Coast AQMD staff worked together to shape the elements and actions described in this Plan. Topics discussed with the CSC include:

- What should be the community **boundaries** for the AB 617 community plans?
- What **air quality concerns** does the community have?
- What are the top **air quality priorities** that the community would like to address through the AB 617 CERP?
- What **priority actions** should be included in the CERP?
- What should the **goals** for the priority actions include?
- Any additional **feedback on the Draft CERP**

The process is summarized in Table 3-1. CSC members discussed which geographic areas should be included within the community boundary, shown in Figure 3-1. The East Los Angeles, Boyle Heights, West Commerce CSC established two distinct community boundaries to represent this community for the purpose of AB 617 community plan implementation. The “Impacted Community” boundary focuses on the places in the community where people live, work, go to

school, and spend the majority of their time. The “Emissions Study Area” boundary includes both the Impacted Community and additional air pollution sources (e.g. facilities and major truck routes) that may affect the Impacted Community. Regions within and near either community boundary will benefit from the emissions reductions within the boundary.

The CSC and members of the public participated in an interactive mapping activity to identify community air quality concerns, which were posted on the webpage<sup>1</sup>. These community air quality concerns are shown in Figure 3-1 and listed in Figure 3-2. The vast majority of the concerns identified were within the Emissions Study Area.

Next, the air quality concerns were grouped into categories (e.g. metal processing, truck and automobile traffic, railyards, etc.), and the CSC and members of the public prioritized the top air quality concerns. CSC members were invited to provide ideas and input on CERP actions and also meet with South Coast AQMD staff to draft CERP actions together. The highest priority actions were included in the draft CERP based on input from the CSC members.

The work to implement the CERP and CAMP<sup>2</sup> is dynamic, thus certain action items have been written with built-in flexibility to permit necessary adjustments as new information becomes available. South Coast AQMD staff is committed to working with CSC members to evaluate ongoing actions and progress.

---

<sup>1</sup> Interactive map of air quality concerns in the East Los Angeles, Boyle Heights, West Commerce community: <https://scaqmd-online.maps.arcgis.com/apps/View/index.html?appid=3e6b40c9a9d94d01bf8d1cc02767370c&extent=-118.2963,33.9664,-118.0650,34.0778>

<sup>2</sup> Community Air Monitoring Plan (CAMP) for the East Los Angeles, Boyle Heights, West Commerce community: <http://www.aqmd.gov/docs/default-source/ab-617-ab-134/camps/elabhwc-camp.pdf?sfvrsn=4>

Table 3-1. Process of CSC Input on CERP elements

| CSC Meeting #       | Discussion Topic(s)  | What type of input did the CSC give?   | How was this CSC input used in the CERP development process?   |
|---------------------|--|--|--|
| #1<br>November 2018 | Community Air Quality Concerns and Community Boundary  | Refined community <b>boundaries</b> . Identified community air quality <b>concerns</b> .<br><u>Outcome</u> : list of air quality concerns                                  | <b>Boundaries</b> were used to define focus area for CERP actions (see Meetings #4-5). <b>Concerns</b> were prioritized for inclusion in Plans (see Meeting #3). |
| #2<br>January 2019  | Community Boundary   | Refined <b>community boundaries</b> .<br><u>Outcome</u> : community boundary   | <b>Boundaries</b> were used to define focus area for CERP actions (see Meetings #4-5).   |
| #3<br>February 2019 | Air Quality Concern Prioritization   | Prioritized which concerns would be addressed in Plans.<br><u>Outcome</u> : air quality priorities   | Actions were developed for <b>air quality priorities</b> (Meetings #4 and #5)  |
| #4<br>March 2019    | Strategies & Proposed Actions (Part 1)   | Ideas for <b>actions</b> can be written into the Plans. Staff will work with CSC members to write CERP actions.<br><u>Outcome</u> : draft focused list of actions for CERP | Feedback on actions were used to develop the list of <b>priority actions</b> (Meeting #6).   |
| #5<br>April 2019    | Strategies & Proposed Actions (Part 2), Draft CAMP, and Draft CERP Table of Contents & Action Template | <b>Community bus tour</b> provided additional insight on community concerns and experiences.   |  |
| #6<br>May 2019      | Focused list of CERP Actions (“priority actions”)  | Provided feedback on which <b>priority actions</b> should be included in CERP.<br><u>Outcome</u> : list of priority actions for CERP                                       | Feedback on actions were used to finalize the list of <b>priority actions</b> to be included in the <b>Draft CERP</b> .  |
| #7<br>June 2019     | Draft CERP, Goals for each CERP Action (Part 1)  | Feedback on <b>Draft CERP</b> . Ideas for specific goals for each CERP action.<br><u>Outcome</u> : Revised Draft CERP  | Feedback on <b>Draft CERP</b> and ideas for specific goals will be used to inform the <b>Draft Final CERP</b> in the Board package.                              |
| #8<br>July 2019     | Goals for each CERP Action (Part 2)  |  |  |
| #9<br>August 2019   | Final Discussion of Draft CERP   | <b>Final revisions</b> for Draft CERP before it is submitted to South Coast AQMD Board for consideration.<br><u>Outcome</u> : Draft Final CERP and Appendices              | Final comments to be addressed in <b>Draft Final CERP</b> that is part of the Board package.   |

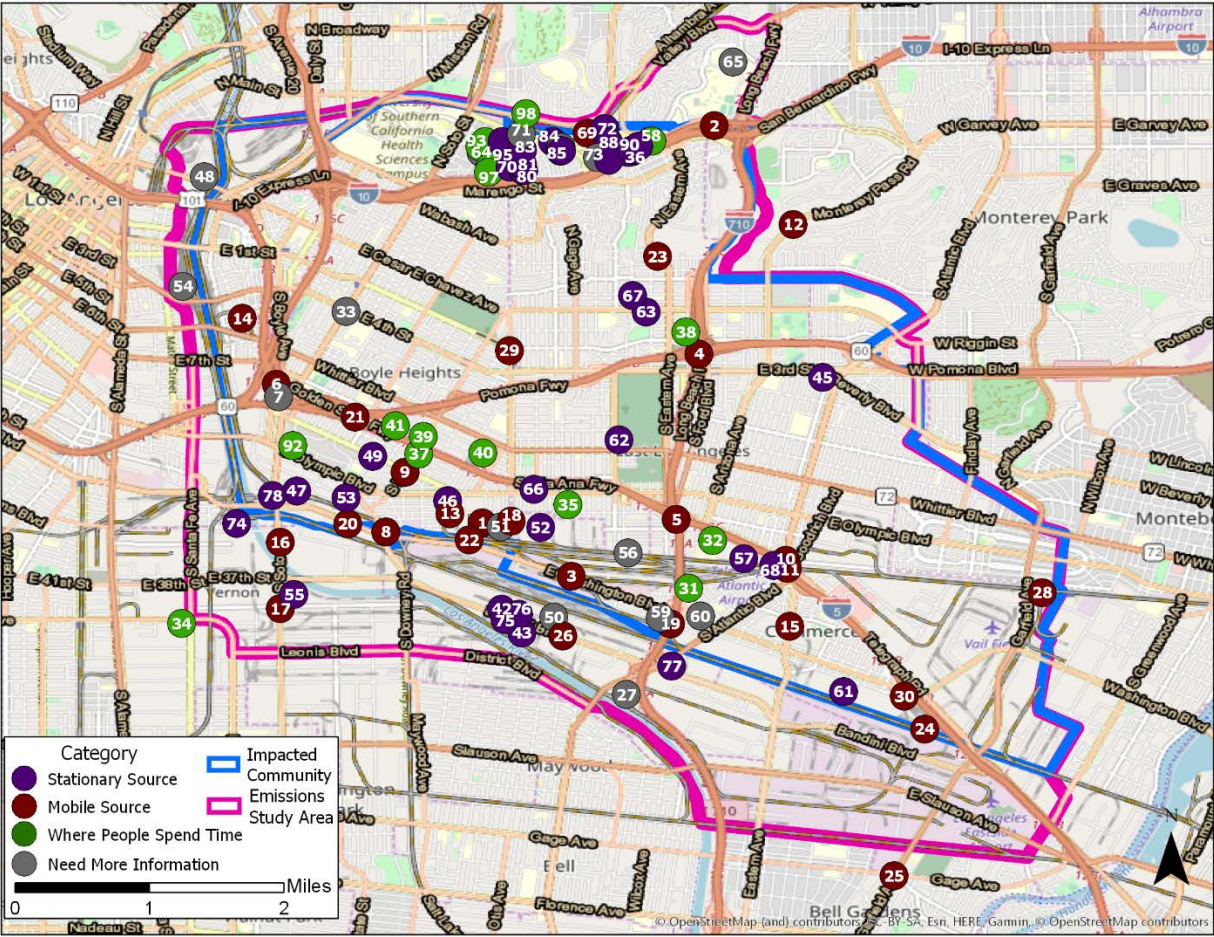


Figure 3-1. Impacted Community and Emissions Study Area boundaries of the East Los Angeles, Boyle Heights, West Commerce community



Figure 3-2. List of air quality concerns identified by the CSC and members of the public

| Label | Concern Name                                   | Category                | Label | Concern Name                                 | Category          |
|-------|--|-------------------------|-------|--|-------------------|
| 1     | Preferred cold service business                | Mobile Source           | 51    | Refinery                                     | Need More Info    |
| 2     | Metrolink                                      | Mobile Source           | 52    | 99 Cents facility                            | Stationary Source |
| 3     | BNSF Railyard/Union Pacific                    | Mobile Source           | 53    | Textile Companies – A Plus Fabrics           | Stationary Source |
| 4     | 710/60 Fwy Intersection                        | Mobile Source           | 54    | Tire Shops, other industry                   | Need More Info    |
| 5     | 710/5 Fwy Intersection                         | Mobile Source           | 55    | Farmer John                                  | Stationary Source |
| 6     | East LA Interchange                            | Mobile Source           | 56    | Construction of cold storage                 | Need More Info    |
| 7     | Transfer Yard                                  | Need More Info          | 57    | Adel Wiggins Group-Industry                  | Stationary Source |
| 8     | Truck Route                                    | Mobile Source           | 58    | Metal facility                               | Need More Info    |
| 9     | Truck Route on Lorena St.                      | Mobile Source           | 59    | Industrial Sources                           | Need More Info    |
| 10    | Trucks   | Mobile Source           | 60    | Oil Production                               | Need More Info    |
| 11    | Trains   | Mobile Source           | 61    | Refuse of Energy Facility                    | Stationary Source |
| 12    | Warehouses                                     | Mobile Source           | 62    | Calvary Cemetery                             | Stationary Source |
| 13    | Trucks Idling                                  | Mobile Source           | 63    | De La Rosa Auto Services                     | Stationary Source |
| 14    | Trucks Idling                                  | Mobile Source           | 64    | Pollution around Murchison St.               | Need More Info    |
| 15    | Truck Route                                    | Mobile Source           | 65    | Sulfur smell near CSULA                      | Need More Info    |
| 16    | Truck Route                                    | Mobile Source           | 66    | Soil remediation from closed gasoline retail | Need More info    |
| 17    | Trucks   | Mobile Source           | 67    | Soil remediation from closed gasoline retail | Need More Info    |
| 18    | Trucks   | Mobile Source           | 68    | Plating Site                                 | Stationary Source |
| 19    | 710 Fwy  | Mobile Source           | 69    | Hai's Trucking                               | Mobile Source     |
| 20    | Truck Route                                    | Mobile Source           | 70    | JSL Foods                                    | Stationary Source |
| 21    | Freeway Interchange                            | Mobile Source           | 71    | Xebec Developer/Last Mile Infill             | Need More Info    |
| 22    | Trains and Trucks Idling                       | Mobile Source           | 72    | Polychemie                                   | Stationary Source |
| 23    | Heavy Industry                                 | Mobile Source           | 73    | Republic Services                            | Need More Info    |
| 24    | BNSF Intermodal Railyard                       | Mobile Source           | 74    | Darling Delaware                             | Stationary Source |
| 25    | Traffic  | Mobile Source           | 75    | Baker Commodities                            | Stationary Source |
| 26    | Bandini Blvd                                   | Mobile Source           | 76    | West Coast Rendering                         | Stationary Source |
| 27    | Construction of CEMEX                          | Need More Info          | 77    | D & D Cremation Services                     | Stationary Source |
| 28    | Rail Traffic                                   | Mobile Source           | 78    | Toxic Waste Handlers                         | Stationary Source |
| 29    | Truck Traffic                                  | Mobile Source           | 79    | Accurate Plating Co                          | Stationary Source |
| 30    | Truck Traffic                                  | Mobile Source           | 80    | Cardenas Auto/Body Repair                    | Stationary Source |
| 31    | Bandini Park                                   | Where People Spend Time | 81    | B and B Towing Service                       | Stationary Source |
| 32    | Bristow Park                                   | Where People Spend Time | 82    | Southland Disposal                           | Stationary Source |
| 33    | New School development at old Lincoln Hospital | Need More Info          | 83    | GU's Recycling                               | Stationary Source |
| 34    | Vernon City Elementary School                  | Where People Spend Time | 84    | AMS Auto Buy                                 | Stationary Source |
| 35    | Eastman Avenue Elementary School               | Where People Spend Time | 85    | R G Diecutting & Foil Graphics               | Stationary Source |

| Label | Concern Name  | Category                | Label | Concern Name                                  | Category                |
|-------|---|-------------------------|-------|---|-------------------------|
| 36    | Daycares near Valmont Coatings                              | Need More Info          | 86    | D & S Autowrecking                            | Need More Info          |
| 37    | De La Hoya Ánimo Charter High School                        | Where People Spend Time | 87    | New California Bumpers                        | Stationary Source       |
| 38    | Volunteers of America Humphreys Head Start                  | Where People Spend Time | 88    | STIC-Adhesive Products Co                     | Stationary Source       |
| 39    | Lorena Street Elementary School                             | Where People Spend Time | 89    | Foote Axle & Forge                            | Stationary Source       |
| 40    | Odd Fellows Cemetery  | Where People Spend Time | 90    | Valmont Coating Industries                    | Stationary Source       |
| 41    | Garcia Park   | Where People Spend Time | 91    | Ponce's Body                                  | Stationary Source       |
| 42    | Exide Technologies  | Stationary Source       | 92    | Carmen Lomas Garza Primary Center             | Where People Spend Time |
| 43    | West Coast Rendering  | Stationary Source       | 93    | Murchison Street Elementary                   | Where People Spend Time |
| 44    | Valmont Coatings  | Stationary Source       | 94    | Murchison Street Early Education Center       | Where People Spend Time |
| 45    | San Cris Autobody Shop                                      | Stationary Source       | 95    | Ramona Gardens Housing Projects               | Need More Info          |
| 46    | Brite Plating Co/Metal Finishing Marketers                  | Stationary Source       | 96    | Ramona Head Start/State Pre-School            | Where People Spend Time |
| 47    | Toxic Waste Recycling Plant – Mana Scrap Recycling Facility | Stationary Source       | 97    | Boys and Girls Club                           | Where People Spend Time |
| 48    | Gravel Grinding   | Need More Info          | 98    | Ming Ya Buddhist Association                  | Where People Spend Time |
| 49    | Odors   | Need More Info          | 99    | The Floricanto Center for the Performing Arts | Where People Spend Time |
| 50    | Dioxin and Furan Concerns                                   | Need More Info          |       |   |                         |

The South Coast AQMD develops and enforces air pollution regulations to reduce emissions, improve air quality and protect public health. Many South Coast AQMD rules are related to a specific type of operation or pollution source. Figure 3-3 describes the number of facilities in this community that are subject to some key South Coast AQMD rules to control emissions from facilities processing metals. The figure also includes information about facilities that are in key state and federal programs, which include major sources of air pollution or other types of environmental pollution.

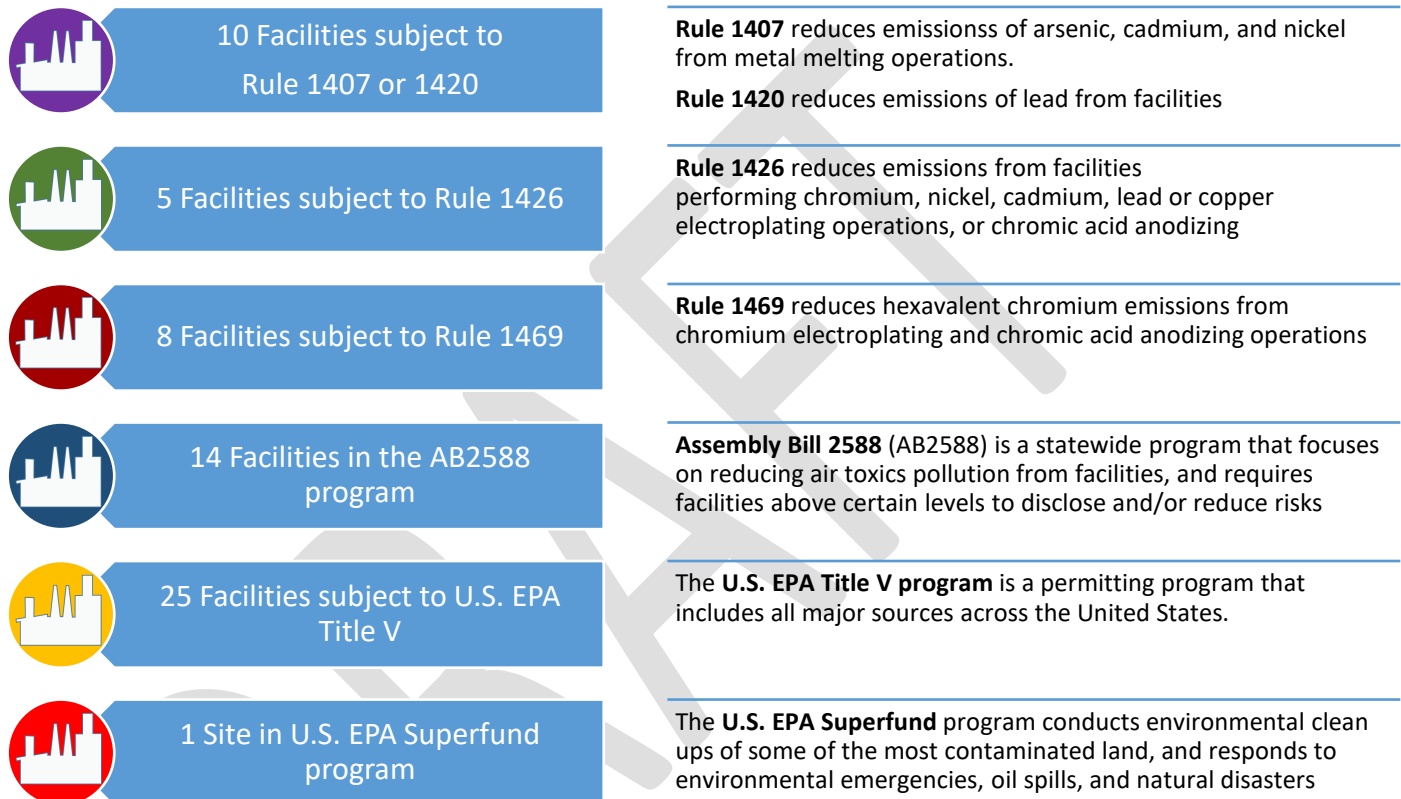


Figure 3-3. Key stationary sources in the East Los Angeles, Boyle Heights, West Commerce community, by regulatory program

The following air quality priorities for the CERP were identified by the CSC and members of the public for the East Los Angeles, Boyle Heights, West Commerce community:

- Neighborhood and freeway traffic (trucks and automobiles)
- Railyards
- Metal processing facilities
- Rendering facilities
- Auto Body shops
- Exposure reduction for sensitive populations in schools and childcare centers
- General concerns about industrial facilities, including a waste transfer station

Actions to address each of these air quality priorities are described in Chapter 5.

The South Coast AQMD and the California Air Resources Board (CARB) both develop and enforce air pollution regulations to improve air quality and protect public health. While CARB has primary authority over mobile sources, the South Coast AQMD has authority over stationary sources and “indirect sources”, which are facilities that attract mobile sources. Examples of indirect sources include warehouses and railyards. Specific information about ongoing rule development that is relevant to these air quality priorities is provided in Chapter 5.

### Community Air Pollution Profile and Related Data

Understanding what air pollution sources exist in the community and what air pollutants come from these sources helps identify key issues that can be addressed through CERP actions. This section presents data based on previous cumulative impact studies<sup>3</sup> to describe the impacts of toxic air pollutants in this community, as well as other environmental pollution, public health factors, and social and economic factors that make people more sensitive or vulnerable to the health effects of pollution<sup>4</sup>.

The East Los Angeles, Boyle Heights, West Commerce community is shown in Figure 3-1. The Impacted Community includes a land area of 18.96 square miles, and the Emission Study Area includes an area of 25.59 square miles. About 41% of this land area is used for residential living, 19% is zoned for commercial uses, 21% is zoned for industrial uses, and 10% is used for freeways, roadways, and land used for utilities and communications services (Figure 3-4).<sup>5</sup>

---

<sup>3</sup> More information regarding MATES IV and the final report can be found on South Coast AQMD’s website at: <http://www.aqmd.gov/home/air-quality/air-quality-studies/health-studies/matesiv>.

<sup>4</sup> Office of Environmental Health Hazard Assessment. CalEnviroScreen 3.0. <https://oehha.ca.gov/calenviroscreen/report/calenviroscreen-30>

<sup>5</sup> Land use refers to how certain areas of land are classified for development and use. Land use data is often used for city or county planning, such as the placement of housing developments and transportation hubs. Land use data is derived from the 2016 Southern California Association of Governments (SCAG) Regional Transportation Plan/ Sustainable Communities Strategy, which is based on 2012 data.



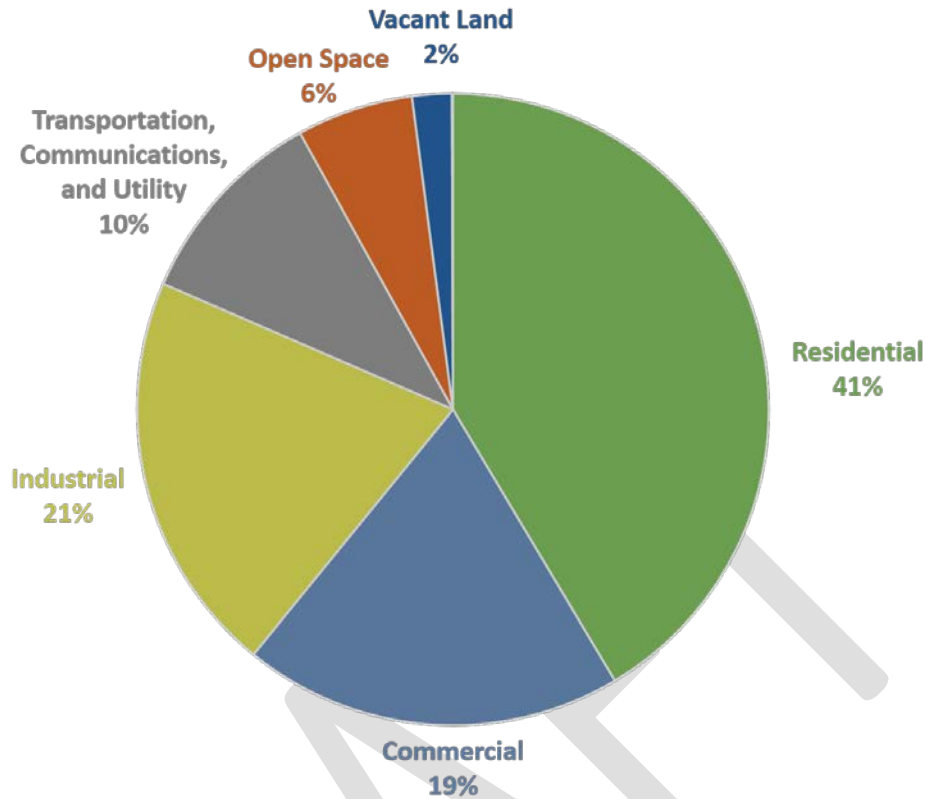


Figure 3-4. Land use profile in East Los Angeles, Boyle Heights, West Commerce

Air toxics are one group of air pollutants that can affect public health on a local community scale. This includes pollutants from diesel exhaust, metal particulate pollutants (e.g. hexavalent chromium, lead, arsenic, nickel, etc.), and gases (e.g. benzene, formaldehyde, etc.). The South Coast AQMD conducts the Multiple Air Toxics Exposure Study (MATES) every few years to understand the cumulative health impacts of air toxics in communities across the region. The most recently completed study was MATES IV, which was conducted in 2012-2013, and used air toxics monitoring, emissions inventories, modeling, and health risk assessment techniques to calculate the cancer risk due to toxic air pollutants (“air toxics cancer risk”).<sup>6</sup> MATES V is currently in progress. Based on MATES IV modeled data, approximately three-quarters of the air toxics cancer risk in the Basin is due to diesel particulate matter (Figure 3-5). The average air toxics cancer risk in the East Los Angeles, Boyle Heights, West Commerce community is higher than the Basin-wide average, and dominated by diesel particulate matter.

<sup>6</sup> More information regarding MATES IV and the final report can be found on South Coast AQMD’s website at: <http://www.aqmd.gov/home/air-quality/air-quality-studies/health-studies/matesiv>.

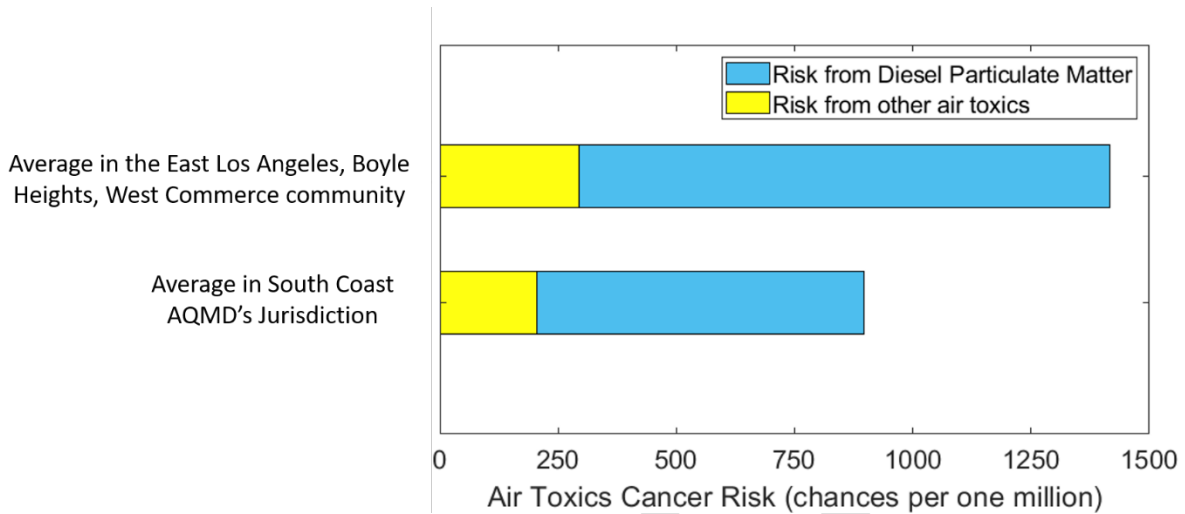


Figure 3-5. Air toxics cancer risk, based on MATES IV modeled data

Mobile sources include trucks, ships, trains, cars, buses, and other mobile equipment. Much of this equipment is powered by diesel, which is the air toxic pollutant with the highest impact in this community. The community includes more than 30.5 miles of freeways and 5 railyards, and many of these are located near residential areas (Figure 3-6)

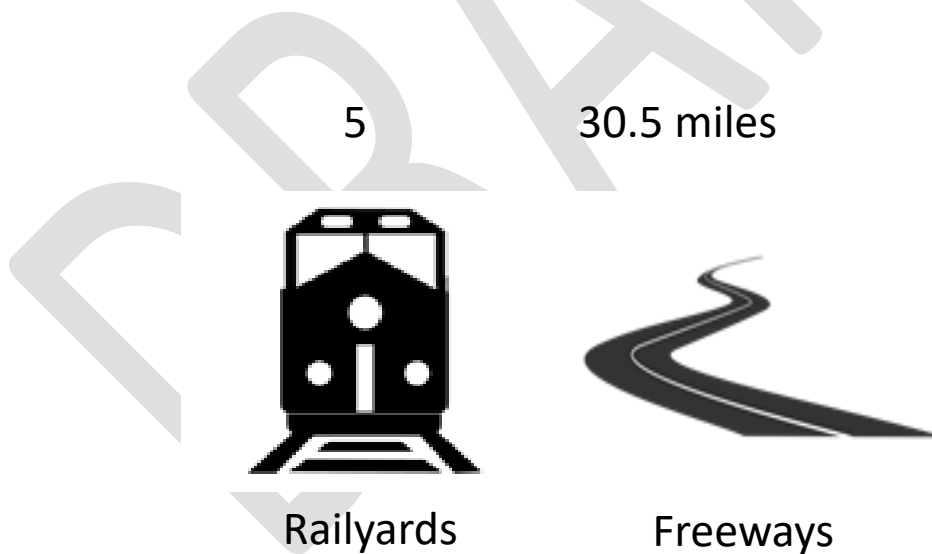


Figure 3-6. Diesel mobile sources in East Los Angeles, Boyle Heights, West Commerce

Understanding the community’s public health and socioeconomic profile helps to provide context for the work being done through this CERP. CalEnviroScreen 3.0 is a screening tool developed by the California Office of Environmental Health Hazard Assessment (OEHHA) that is

used to identify communities that are most affected by various sources of pollution, and where people are especially vulnerable to pollution’s effects. The CalEnviroScreen 3.0 data show that this community has public health factors, as well as social and economic factors, that make the community more sensitive and vulnerable to the harmful effects of air pollution compared to statewide averages (Figure 3-7 and Figure 3-8). These data show that, on average, the East Los Angeles, Boyle Heights, West Commerce community has generally worse public health factors and more social and economic disadvantages compared to California as a whole. The public health factors specifically show that this community has higher rates of emergency department visits for asthma and heart disease, and babies born low weight, compared to statewide averages.

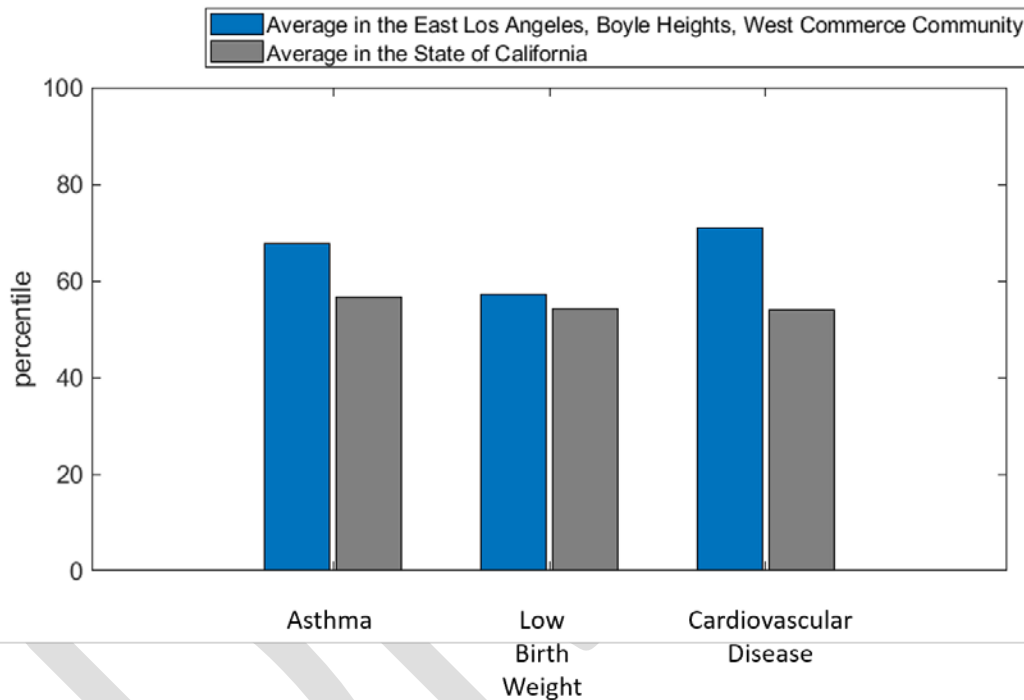


Figure 3-7. CalEnviroScreen 3.0 scores for public health factors in East Los Angeles, Boyle Heights, West Commerce compared to statewide averages

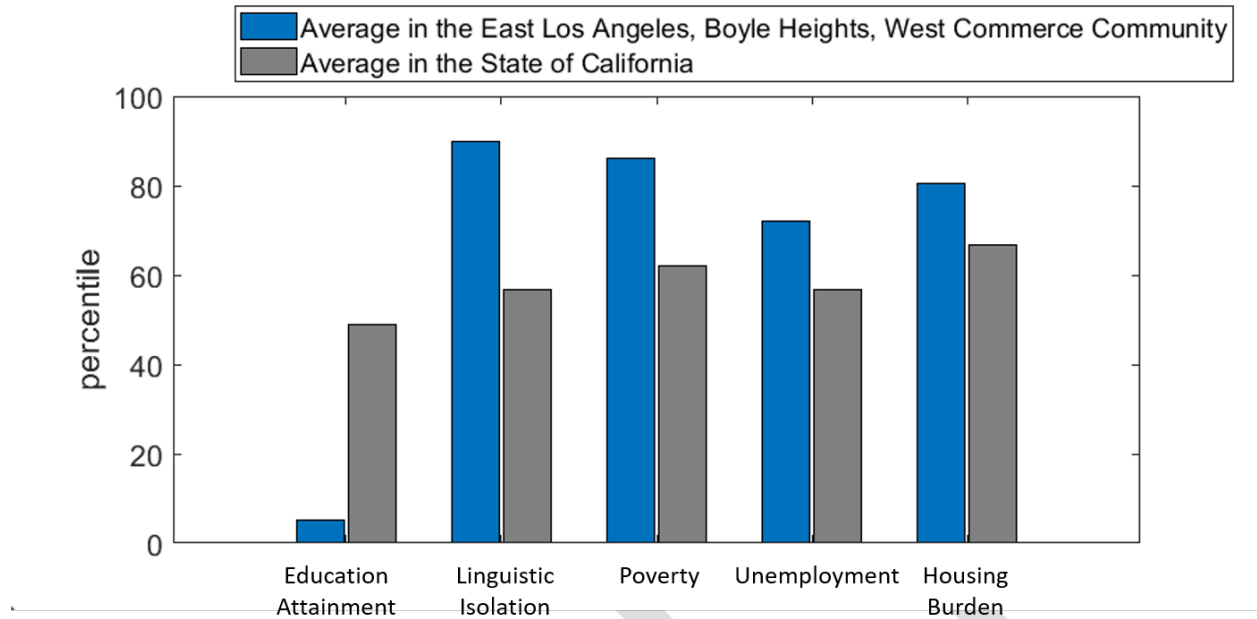


Figure 3-8. CalEnviroScreen 3.0 scores for social and economic factors in East Los Angeles, Boyle Heights, West Commerce compared to statewide averages<sup>7,8</sup>

[Emissions Inventory and Source Attribution analysis to follow in this section]

<sup>7</sup> The metric of Educational Attainment in CalEnviroScreen 3.0 is defined as the percent of people whose highest level of education is less than a high school education. A lower percentile score shown in the blue bar on the graph for this metric means the community has fewer people who have completed a high school education.

<sup>8</sup> The metric of Linguistic Isolation in CalEnviroScreen 3.0 is defined as the percent of households where no one over age 14 speaks English well. A higher percentile score shown in the blue bar on the graph for this metric means there are more households that meet this definition.