

# Aggregate Facilities

## Know the Rules & How to Report Concerns

South Coast  
Air Quality  
Management  
District



### Who is South Coast AQMD?

The South Coast Air Quality Management District (South Coast AQMD) is the regulatory agency responsible for improving air quality for large areas of Los Angeles, Orange, Riverside and San Bernardino counties, including the Coachella Valley.

### What are Aggregate Facilities?

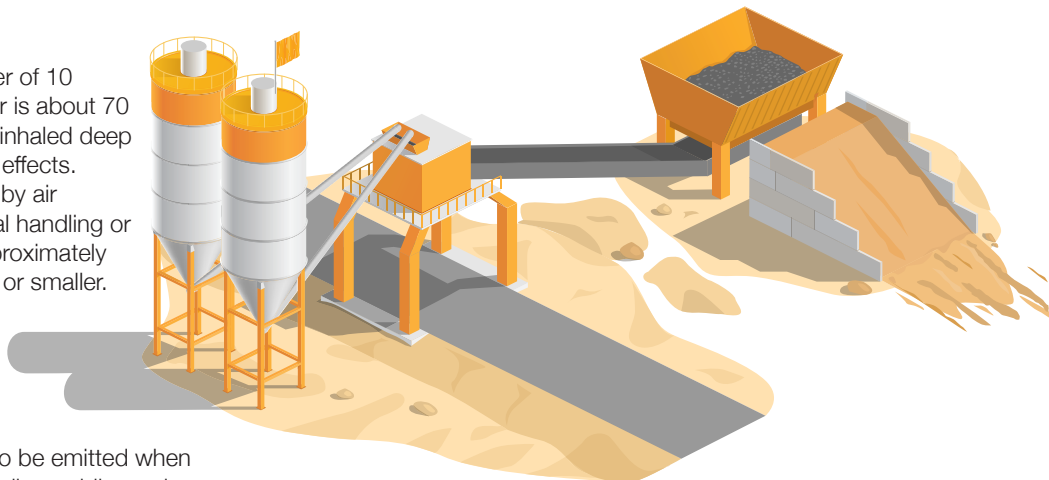
Aggregate operations produce or process materials like sand, gravel, crushed stone, and quarried rocks. Related operations include concrete batching, hot-mix asphalt production, and recycling of construction materials. These activities can generate particulate matter, or dust emissions.

### What is PM10 and fugitive dust?

- **PM10:** Particulate matter (PM) with a diameter of 10 microns or less (for comparison, a human hair is about 70 microns). Due to its small size, PM10 can be inhaled deep into the lungs and may cause adverse health effects.
- **Fugitive Dust:** Dust emissions not captured by air pollution controls, such as those from material handling or windblown emissions from storage piles. Approximately half of visible dust emissions are PM10-sized or smaller.

### How do Aggregate Operations emit PM10 pollution?

PM10 is generated during mining, processing, and handling activities, including loading/unloading of materials. PM10 can also be emitted when vehicles travel that track out soil onto surrounding public roads.



## Key Rules

### PM10 Emission Reductions from Aggregate and Related Operations (Rule 1157)

- Requires implementation of dust control measures, such as applying dust suppressants.
- Requires cleaning of internal paved roads and installation of devices near facility exit points to reduce track-out of material onto external roads.
- Requires cleaning of roads around the facility if material is tracked out.

### PM Control Devices (Rule 1155)

Requires proper operation of air pollution control devices such as baghouses and high-efficiency particulate air (HEPA) systems to control and capture PM emissions.

### Public Nuisance (Rule 402)

Prohibits the discharge of air contaminants or other materials that cause injury, detriment, nuisance, or annoyance to a considerable number of persons or the public, or that endanger public health or safety.

### Fugitive Dust (Rule 403)

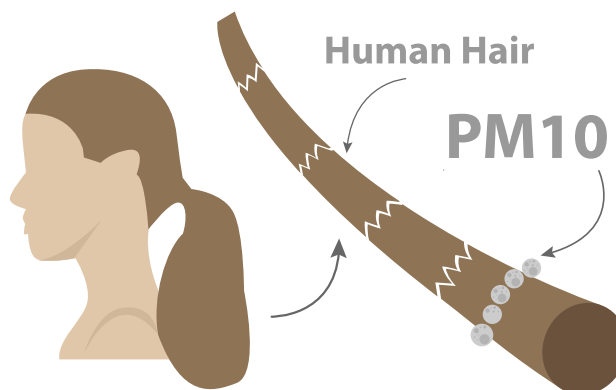
Requires actions to prevent, reduce, or mitigate emissions from sources like earthmoving activities and storage piles.

### How to Report an Air Quality Complaint

- ☎ 1-800-CUT-SMOG (1-800-288-7664)
- 🌐 [www.aqmd.gov/complaints](http://www.aqmd.gov/complaints)
- 📱 Through the South Coast AQMD Mobile App.

Your reports help ensure facilities comply with air quality regulations and protect public health.

### How big PM 10?



South Coast Air Quality Management District

21865 Copley Drive, Diamond Bar, CA 91765-4178

[aqmd.gov](http://aqmd.gov) • 1-800-CUT-SMOG

Stay Connected With Us @SouthCoastAQMD

