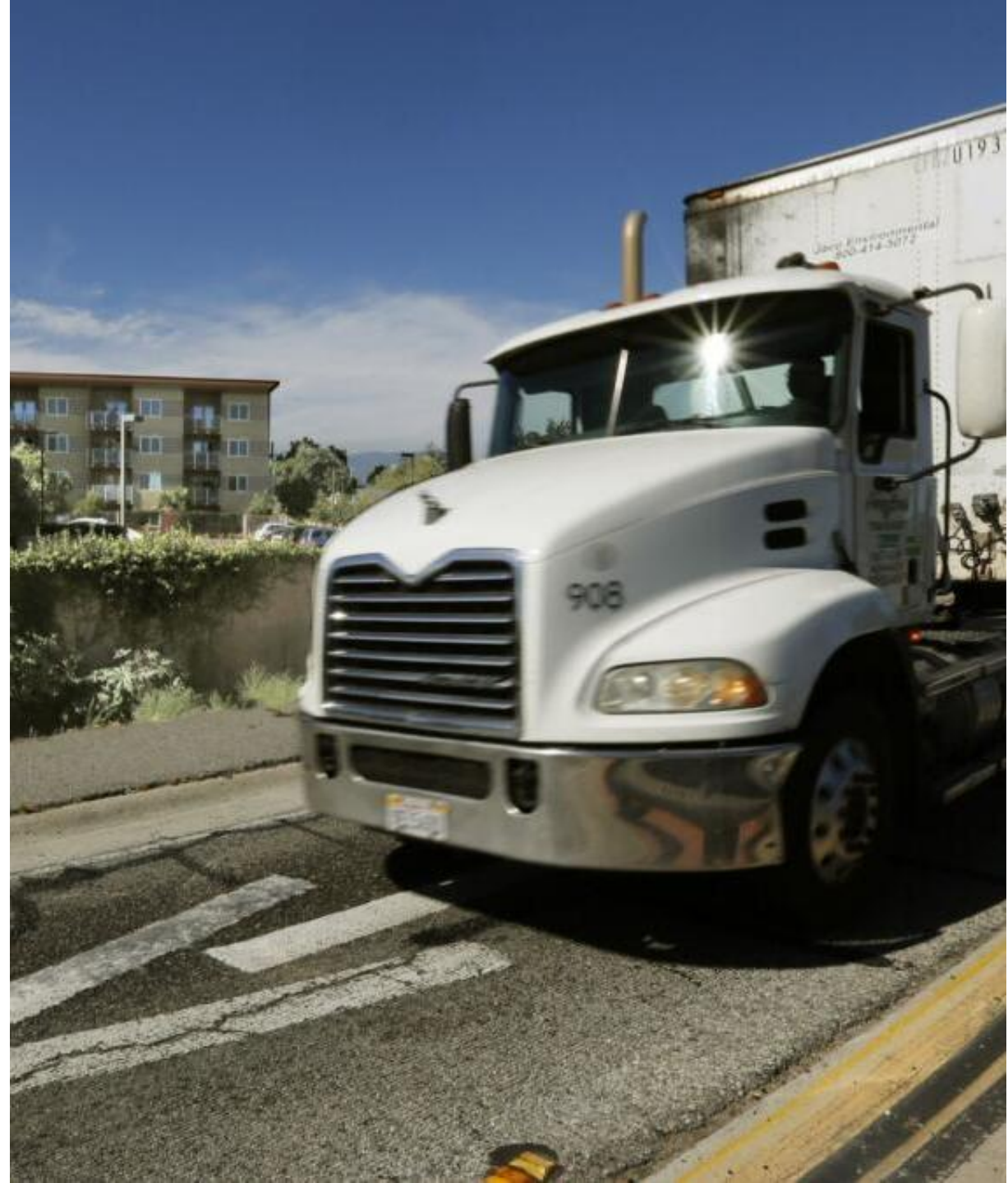


LEGACY LA COMMUNITY TRUCK ROUTES EVENT

Nish Krishnamurthy, PhD
Tuesday, March 31, 2026



South Coast Air Quality Management District (South Coast AQMD)

- Local air quality regulatory agency for large portions of Los Angeles, San Bernardino, and Riverside Counties and all of Orange County
- Jurisdiction covers approximately 17 millions residents



Assembly Bill 617 (AB 617)



- AB 617 was signed into California law in 2017 to address the disproportionate impacts of air pollution on environmental justice (EJ) communities
- South Coast AQMD's six AB 617 communities:

2018-Designated Communities

- *East Los Angeles, Boyle Heights, West Commerce (ELABHWC)**
- San Bernardino, Muscoy
- Wilmington, Carson, West Long Beach

2019-Designated Communities

- Eastern Coachella Valley
- Southeast Los Angeles

2020-Designated Community

- South Los Angeles

* Legacy LA and Ramona Gardens are in ELABHWC

AB 617 Components



Community
Emission
Reductions Plans
(CERPs)



Community Air
Monitoring Plans
(CAMPs)



Clean Technology
Investments



Best Available
Retrofit Control
Technology
Rules



Easier Access to
Emissions Data

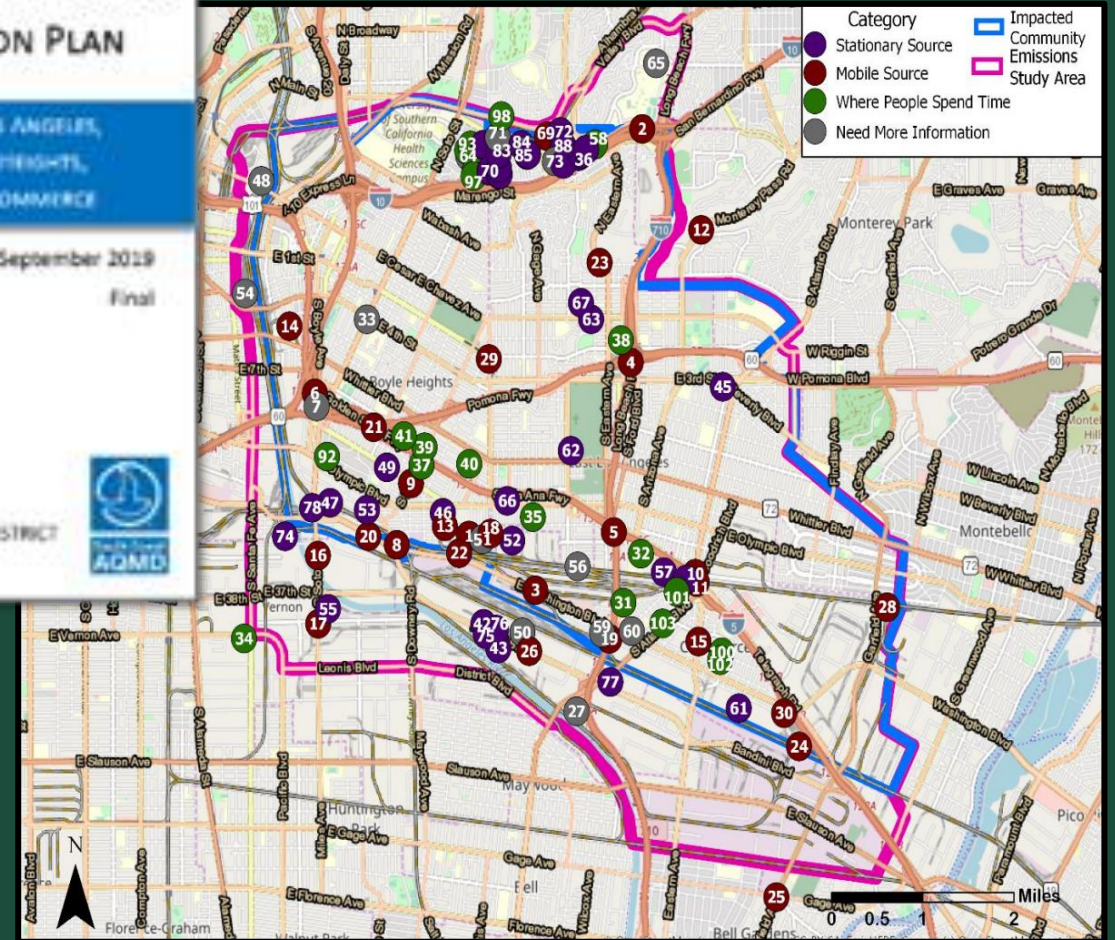
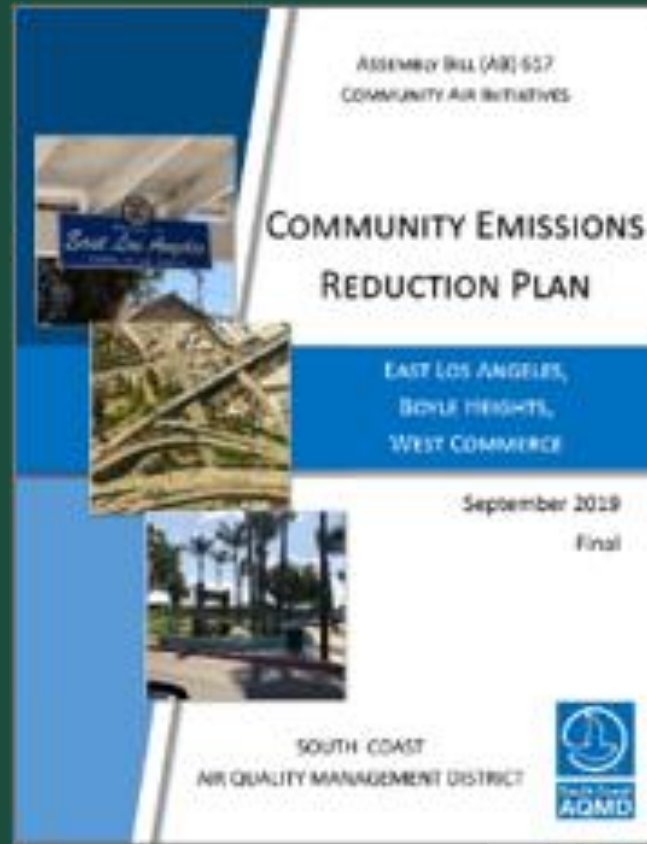
CERP Air Quality Priorities & Objectives

The CERP includes air quality priorities identified by Community Steering Committee (CSC)

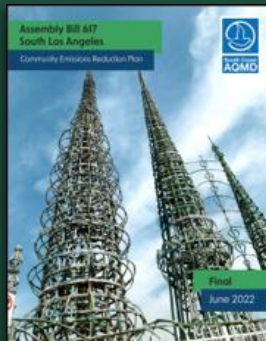
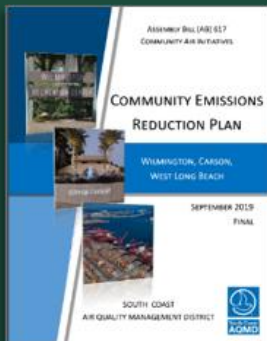
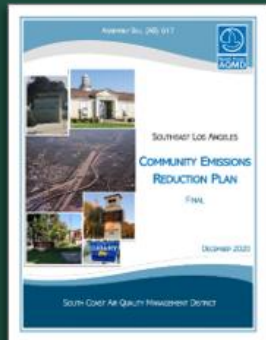
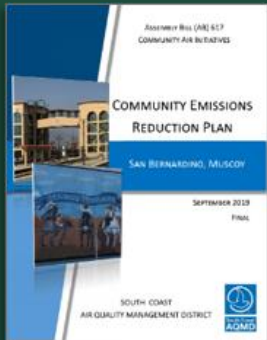
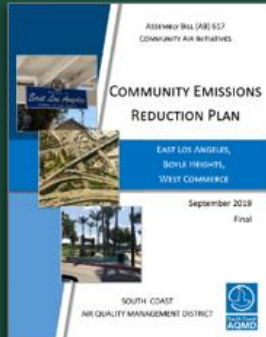
Each air quality priority includes objectives to help address it

ELABHWC CERP air quality priorities:

- *Neighborhood Truck Traffic*
- *Railyards*
- *Metal Processing Facilities*
- *Rendering Facilities*
- *Auto Body Shops*
- *Exposure Reduction*
- *General Industrial Facilities*



CERP Strategies



Reduce Exposure

+

Reduce Emissions



Heavy-duty Truck Emissions

- Heavy-duty trucks release pollutants such as diesel particulate matter (DPM) and nitrogen oxides (NO_x)
- Heavy-duty trucks account for 47% of DPM emissions in ELABHWC
- DPM contributes to 67% of air toxics cancer risk in South Coast Air Basin
- Reducing exposure to truck emissions by collaborating with transportation agencies on truck routes is a CERP objective

Request for Community Feedback

Purpose

- South Coast AQMD is seeking community feedback to identify *neighborhood* streets which may benefit from truck access restrictions

How Your Feedback Will Be Used

- Your input will be provided to the local transportation agencies for their consideration

How to Provide Feedback

- Instructions will be provided later in this presentation
- Supplemental information will be provided to aid your decision-making process

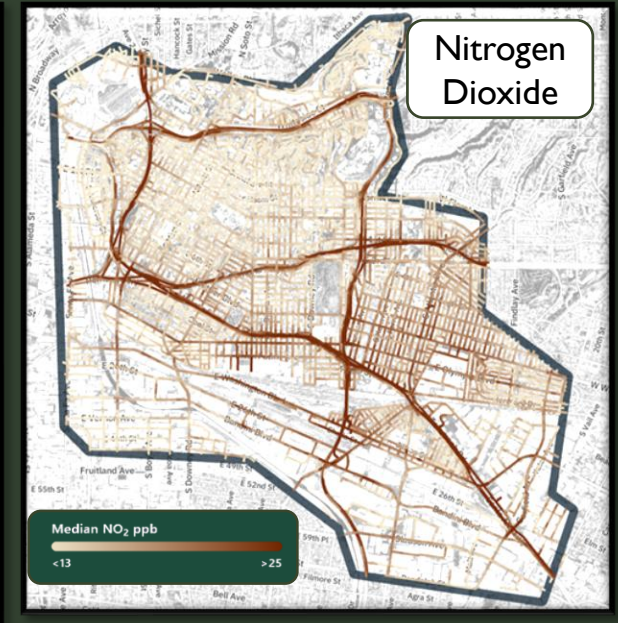
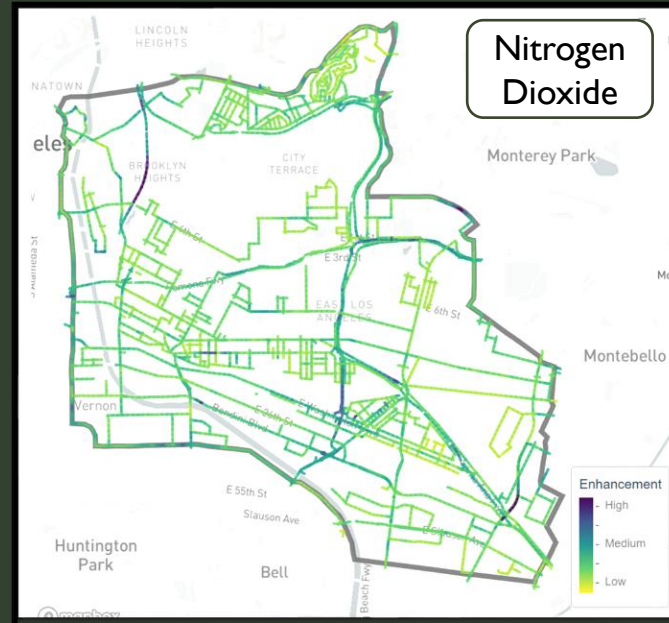
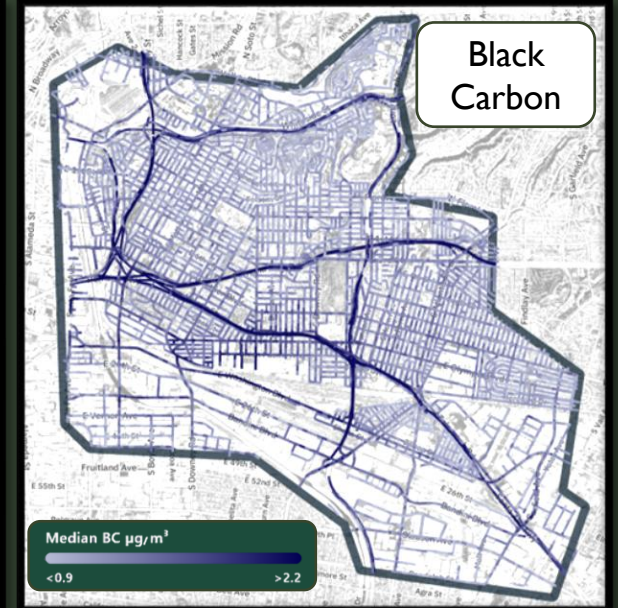
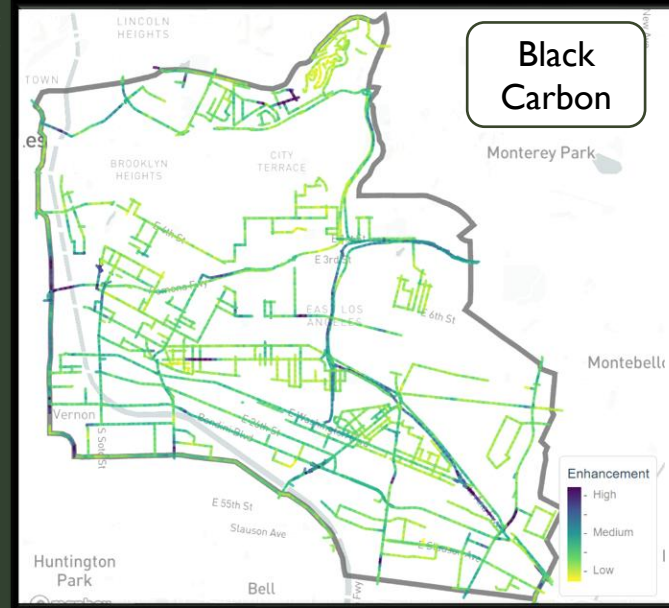


Supplemental Information: Pollutants of Concern

Nitrogen dioxide (NO₂) and black carbon (BC; also known as soot) are pollutants associated with truck emissions

South Coast AQMD and its contractor (Aclima) have conducted extensive mobile air monitoring measurements of ELABHWC community

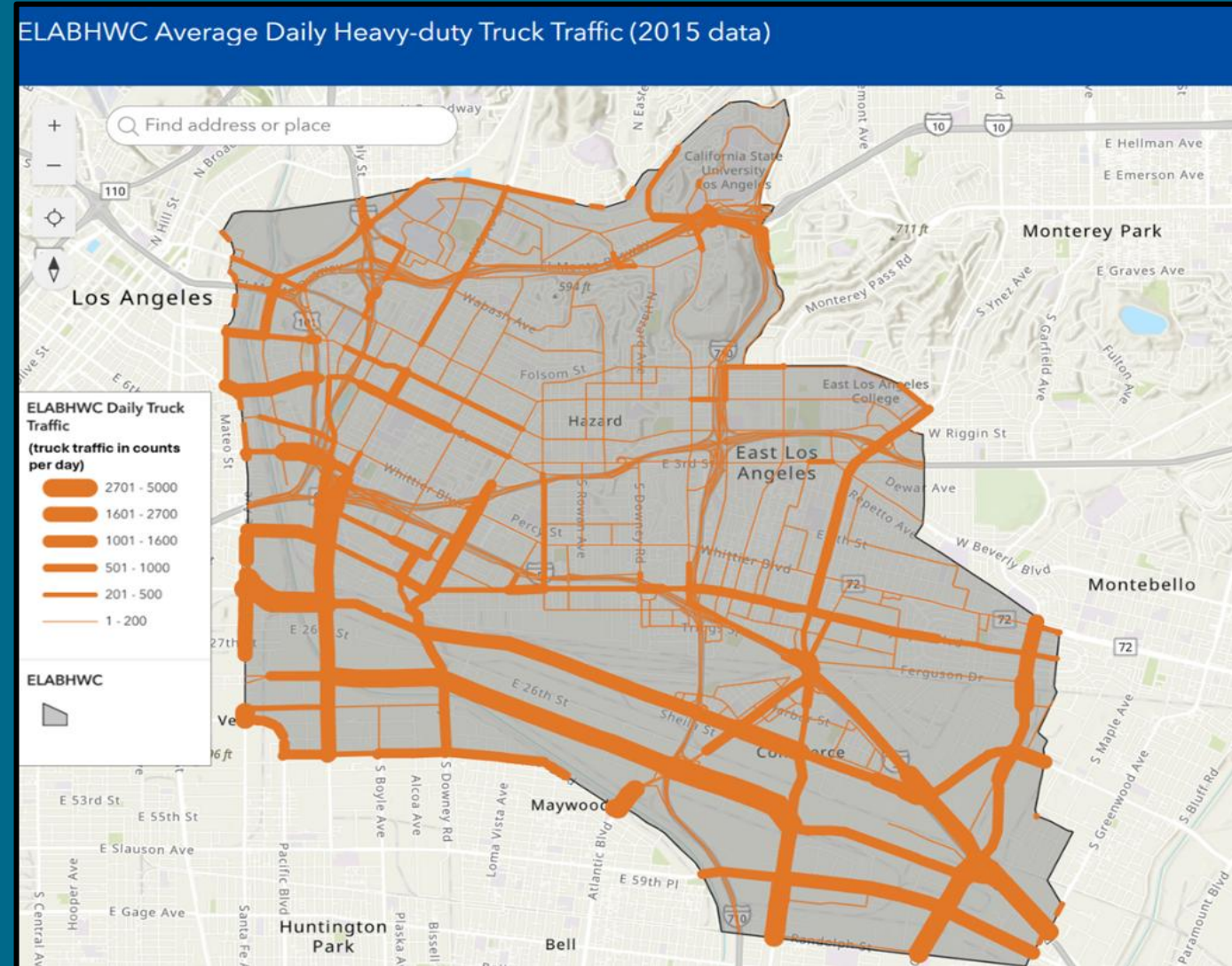
<https://www.aqmd.gov/nav/about/initiatives/environmental-justice/ab617-134/ab617-community-air-monitoring/communities/elabhwc/elabhwc-mobile-monitoring-dashboard>



Supplemental Information: Truck Traffic*

Corridors with higher truck traffic may correspond with locations with elevated levels of NO₂ and BC

* Truck traffic information based on Metro's 2015 Countywide Strategic Truck Arterial Network (CSTAN) study



Feedback Examples

Location (intersection, city block, address, etc.)	Comments
Euclid Ave. between Whittier Blvd. and Guirado St. in Boyle Heights	"Truck traffic through residential neighborhood and near elementary school."
Clea Ave. between Whittier Blvd. and 6 th St. in East LA	"Trucks exiting Whittier Blvd. cutting through a residential neighborhood to reach 6 th St."

Providing Community Feedback

Truck Routes Packet

Assembly Bill 617 - East Los Angeles, Boyle Heights, West Commerce (ELABHWC) Truck Routes Feedback Form

South Coast Air Quality Management District (SCAQMD) is seeking additional community feedback to identify neighborhood streets and corridors of concern for truck traffic in ELABHWC.

How Your Feedback Will Be Used:
Community input will help identify locations for potential truck restrictions to be shared with relevant transportation agencies.

Providing Community Feedback

The packet includes four map pages, each showing a different subsection of the ELABHWC community boundary.

Review each subsection and mark any streets, intersections, or specific locations where you have concerns related to truck traffic.

Use black or red ink to clearly circle, highlight, or annotate the areas of concern. You may also write short notes directly on the map.

Each page includes labeled landmarks and notable locations to help you orient yourself within the neighborhood.

Scan these QR codes to view the ELABHWC community map on your phone or submit your feedback online:

- Community Map
- Online Truck Routes Feedback Form

Online Feedback Form

South Coast AQMD AB 617 Truck Routes Feedback Form

When you submit this form, it will not automatically collect your details like name and email address unless you provide it yourself.

* Required

1. Please enter your name. *


Enter your answer

2. Please enter your email address. *

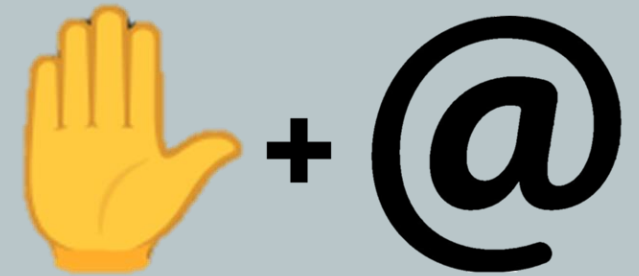
Enter your answer

3. Which Assembly Bill 617 community area are you in? *

- East Los Angeles, Boyle Heights, West Commerce (ELABHWC)
- San Bernardino, Muscog (SBM)



Meetings and Email



<https://forms.office.com/g/c0sxtFnkm9>

Next Steps

CSC Input

- Solicit CSC input until **Friday, May 29, 2026**
- Compile CSC feedback



Mapping and Data Sharing

- Map potential locations for truck restrictions, where feasible
- Provide CSC feedback to local transportation agencies*

* Submission of maps or other materials by South Coast AQMD to other agencies does not guarantee that truck route restrictions will be implemented

ELABHWC Truck Routes Contacts

Nish Krishnamurthy, Ph.D.
Air Quality Specialist
nkrishnamurthy@aqmd.gov
909-396-3120

Robert Dalbeck
Program Supervisor
rdalbeck@aqmd.gov
909-396-2139

General AB 617 Inquiries
ab617@aqmd.gov



ELABHWC Resources

- [CERP](#)
- [ELABHWC map](#)
- [AB 617 Truck Routes Feedback Form](#)
- [Mobile Air Monitoring Dashboard \(South Coast AQMD\)](#)
- [Mobile Air Monitoring Report \(Aclima\)](#)
- [Truck traffic map](#)