

COMMUNITY STEERING COMMITTEE

CSC # 1 - ECV

FEBRUARY 20, 2020



Arlene Farol
Sr. Public Information Specialist



South Coast
AQMD

CSC ORIENTATION

- Welcome Letter
- Expectations of CSC Members
 - CSC Charter
- Meeting Schedule / Timeline
- Community Boundary Map

WELCOME LETTER & EXPECTATIONS



Expectations of CSC Members



Community Network



Communicate & Outreach



Attendance & Participation

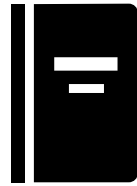


Appropriate Representation



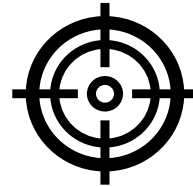
Respect

CSC CHARTER



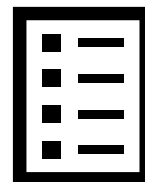
Background

Mission



Membership

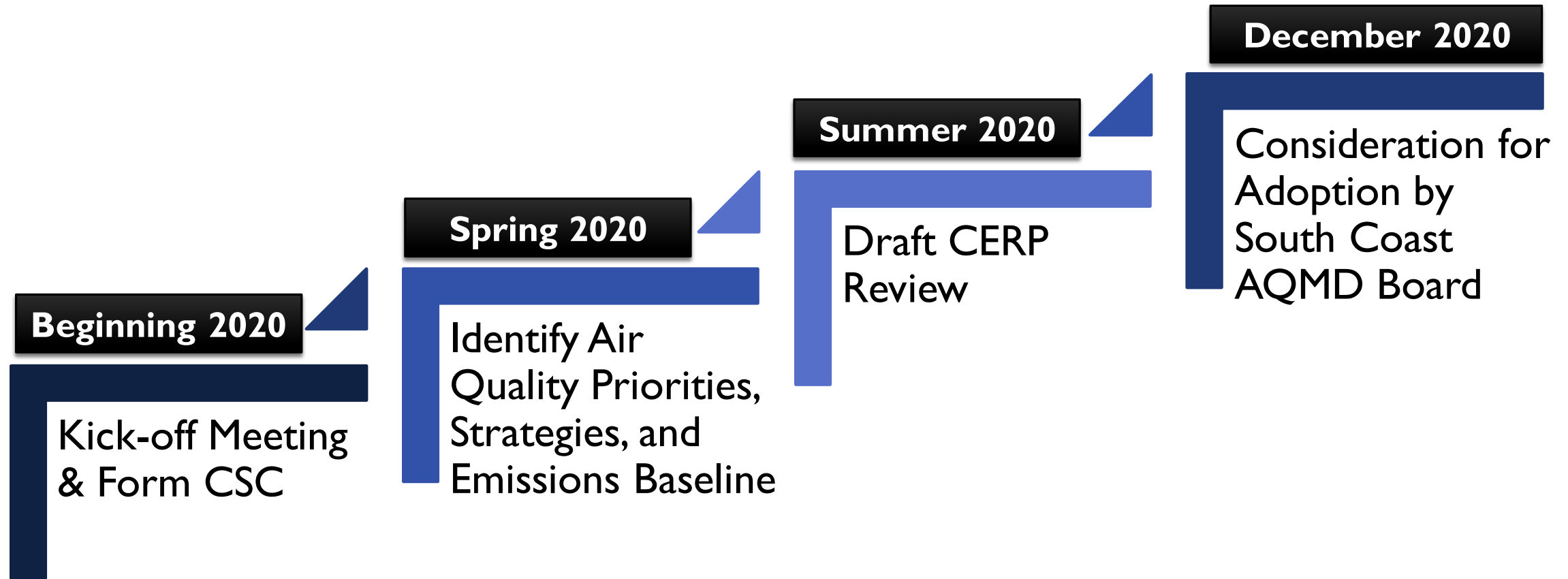
Guidelines




AB 617 – 2020 COMMUNITY STEERING COMMITTEE TENTATIVE SCHEDULE

<p>January 22, 2020</p>	<p>Community Kick-off Meeting</p> <p>Location: Coachella Library Conf Rooms 1500 Sixth St. Coachella, CA</p>	<p>June 25, 2020</p>	<p>Community Steering Committee Meeting</p> <p>Location:TBD</p>
<p>February 20, 2020</p>	<p>Community Steering Committee Meeting</p> <p>Location: Coachella Library Conf Rooms 1500 Sixth St., Coachella, CA</p>	<p>September, 24 2020</p>	<p>Community Steering Committee Meeting Location:TBD</p>
<p>March 19, 2020</p>	<p>Monitoring Workshop CSC Meeting</p> <p>Location: Coachella Library Conf Rooms 1500 Sixth St., Coachella, CA</p>	<p>October 22 , 2020</p>	<p>Community Steering Committee Meeting</p> <p>Location:TBD</p>
<p>April 23 , 2020</p>	<p>Community Steering Committee Meeting</p> <p>Location:TBD</p>		

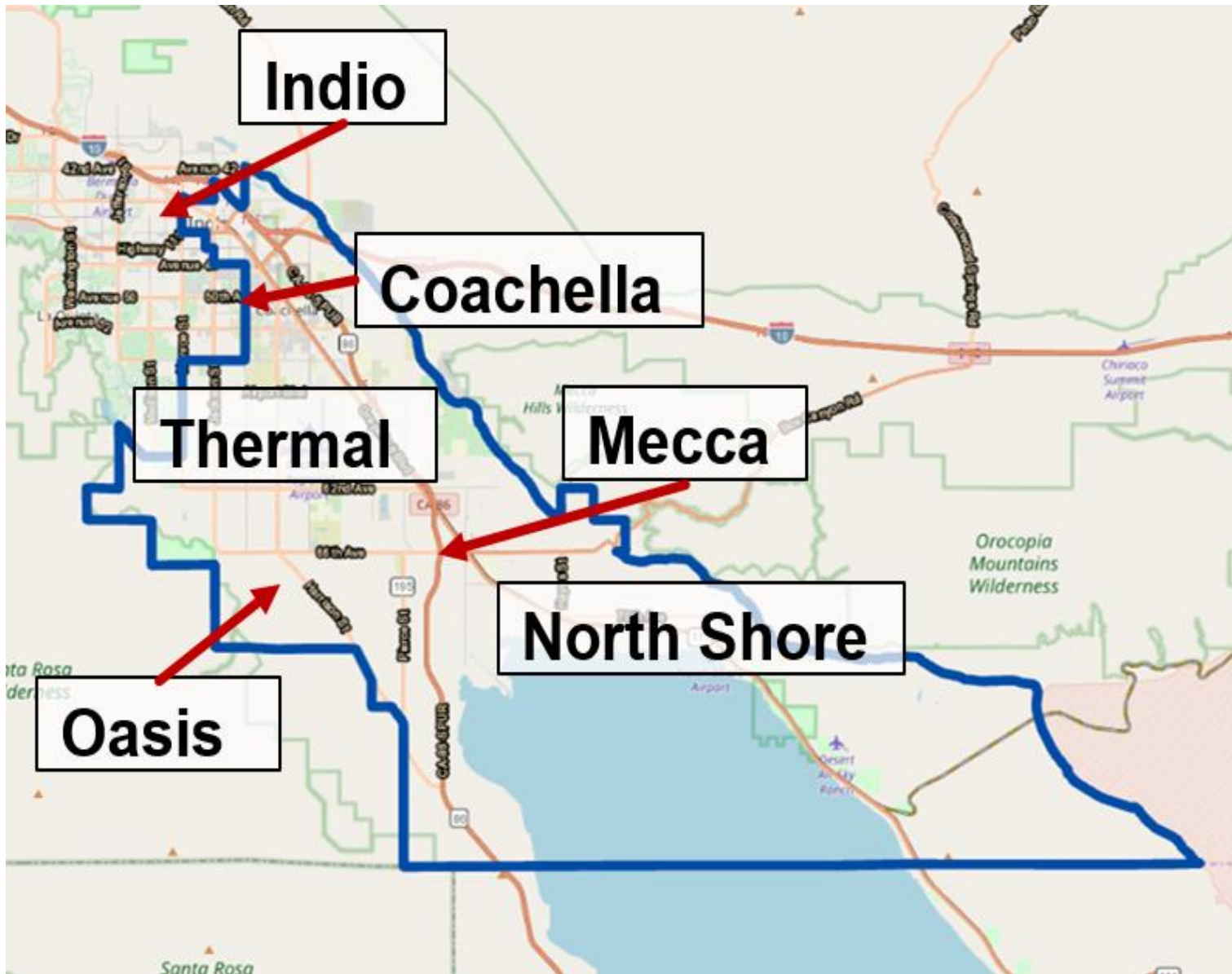
Next Steps for ECV CERP





**CSC involvement and input is critical
for successful CERP and CAMP
implementation**

**Thank you for your continued
commitment!**



COMMUNITY BOUNDARY MAP

The boundaries include
Coachella, Indio, Mecca,
North Shore, Oasis and
Thermal

COMMUNITY BOUNDARY

Purpose: to guide where AB 617 resources will be focused in this community

- Air measurements
- Incentives (e.g., funding for cleaner trucks)
- Emissions reductions

Goals

- Identify the main impacted area*
- Identify the emissions study area** (*Includes both the impacted area and nearby air pollution sources*)

* Neighborhoods outside the “impacted area” will benefit from reducing air pollution emissions near the boundary

** South Coast AQMD rules, enforcement, and other programs apply to **all** facilities in our region

AIR QUALITY PRIORITIES

EASTERN COACHELLA VALLEY CSC MEETING #1
FEBRUARY 20, 2020



Pedro Piqueras, Ph.D.
Air Quality Specialist

OVERVIEW OF CERP PROCESS

Launch

- Establish community steering committee (CSC)
- CSC identifies air quality priorities

Development

- Conduct regular CSC meetings and workshops to develop:
 - Emission reduction **goals and targets**
 - Identify **actions** and **strategies** to achieve goals and targets

Implementation

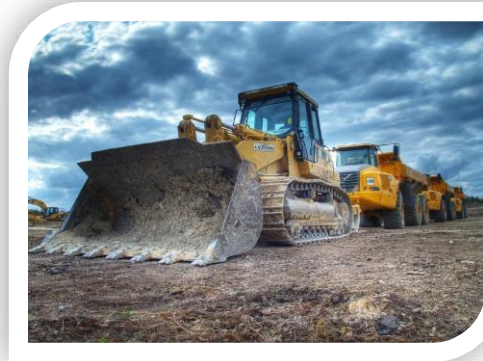
- CERP is **adopted** by South Coast AQMD Governing Board and **approved** by CARB Board
- Begin implementing CERP actions to reduce emissions



SOURCES OF AIR POLLUTION IN ECV

Top 5 Sources of Diesel Particulate Matter (DPM)

- A toxic air pollutant that comes from diesel engines
 1. Heavy heavy-duty diesel trucks
 2. Trains
 3. Off-road equipment
(e.g., construction equipment)
 4. Farm equipment
(e.g., cultivators, harrows, tree shakers, tractors)
 5. Medium heavy-duty diesel trucks



SOURCES OF AIR POLLUTION IN ECV

Top 5 Sources of Volatile Organic Compounds (VOCs)

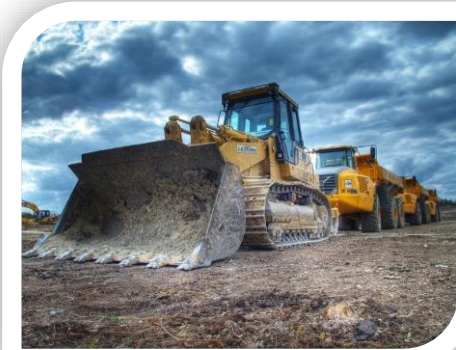
- A group of gases that can contribute to forming smog
 - Examples: acetone, benzene, formaldehyde
1. Consumer products *(e.g., deodorants, hairspray, spray paints)*
 2. Light-duty vehicles *(e.g., passenger cars, pick-up trucks)*
 3. Off-road equipment *(e.g., construction equipment)*
 4. Pesticides/fertilizers
 5. Coatings and related processes



SOURCES OF AIR POLLUTION IN ECV

Top 5 Sources of Fine Particulate Matter (PM_{2.5})

- Fine particles that can be breathed deep into the lungs and cause health problems
1. Construction and demolition
 2. Road dust (*paved and unpaved roads*)
 3. Fugitive windblown dust
 4. Farming operations
(*e.g., tilling, shaking*)
 5. Light-duty vehicles
(*e.g., tire and brake wear*)



SOURCES OF AIR POLLUTION IN ECV

Top 5 Sources of Coarse Particulate Matter (PM10)

- Slightly larger particles that can be breathed into the lungs and cause health problems
1. Construction and demolition
 2. Road dust (*paved and unpaved roads*)
 3. Fugitive windblown dust
 4. Farming operations
(*e.g., tilling, shaking*)
 5. Light-duty vehicles
(*e.g., tire and brake wear*)



AIR QUALITY PRIORITY EXAMPLES*

Reduce emissions from:



Fugitive Dust



Pesticides



**Agricultural and
Other Burning**



**Trucks
Transiting the
Community**



**Construction/
Off-Road
Equipment**

These are only examples of the types of air quality priorities that can be included in the CERP. The priorities will be based on community input.

AIR QUALITY PRIORITY EXAMPLES* (CONTINUED)

Reduce exposure at:



Schools



**Residential
areas**



**Places sensitive
populations spend
time (e.g., senior centers,
community centers)**

Address concerns about:



Green spaces



Land use

These are only **examples** of the types of air quality priorities that can be included in the CERP. The priorities will be based on community input.

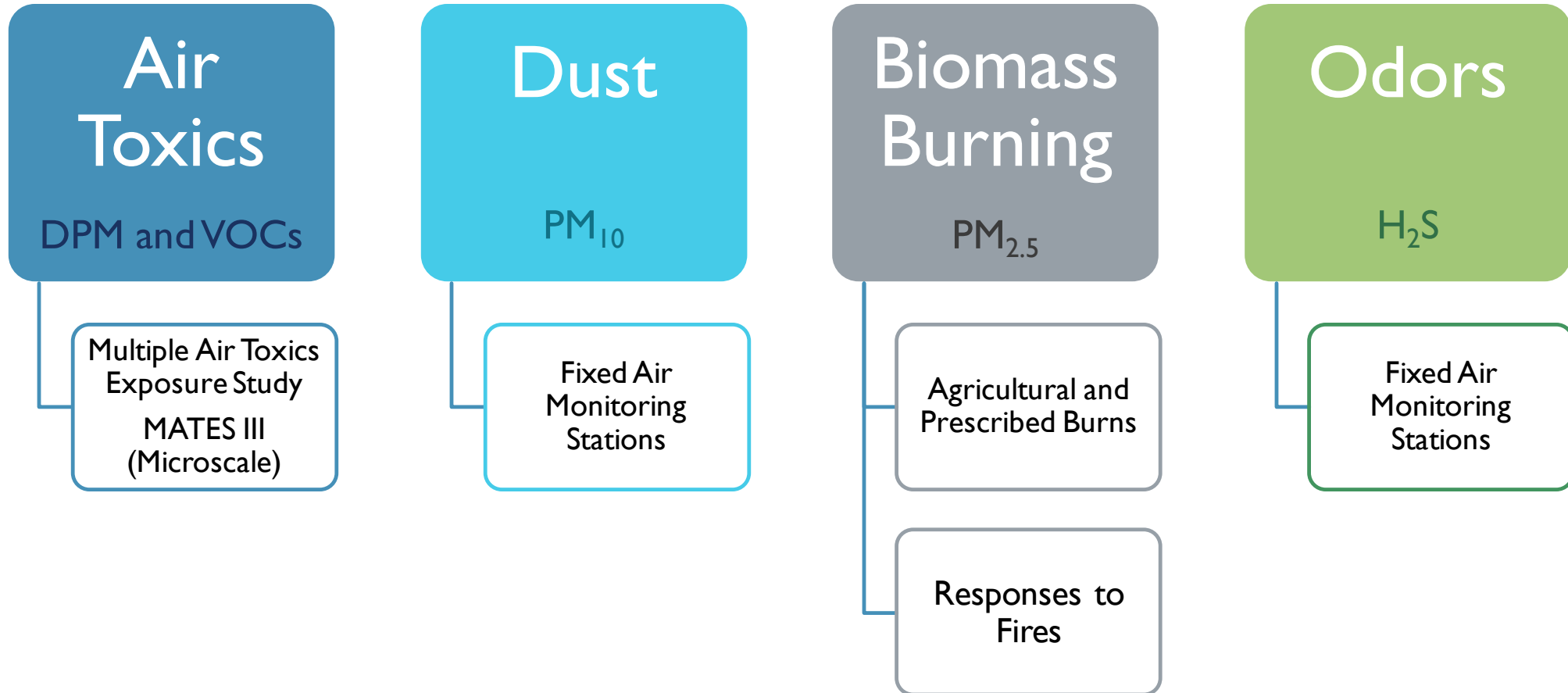
AB 617 COMMUNITY AIR MONITORING

EASTERN COACHELLA VALLEY CSC MEETING #1

Payam Pakbin
Program Supervisor

FEBRUARY 20, 2020

PAST AND EXISTING AIR MONITORING TO ADDRESS TOP SOURCES OF POLLUTION IN ECV



EASTERN COACHELLA VALLEY AIR MONITORING ACTIVITIES

Air Toxics

- **MATES III
(Microscale; 2005)**

Dust and Odors

- Air monitoring stations in ECV
 - **Indio**
 - **Mecca** (Saul Martinez Elementary School)
 - **Tribal** Air Monitoring Station (Salton Sea North Shore) *with assistance from the Imperial Irrigation District*

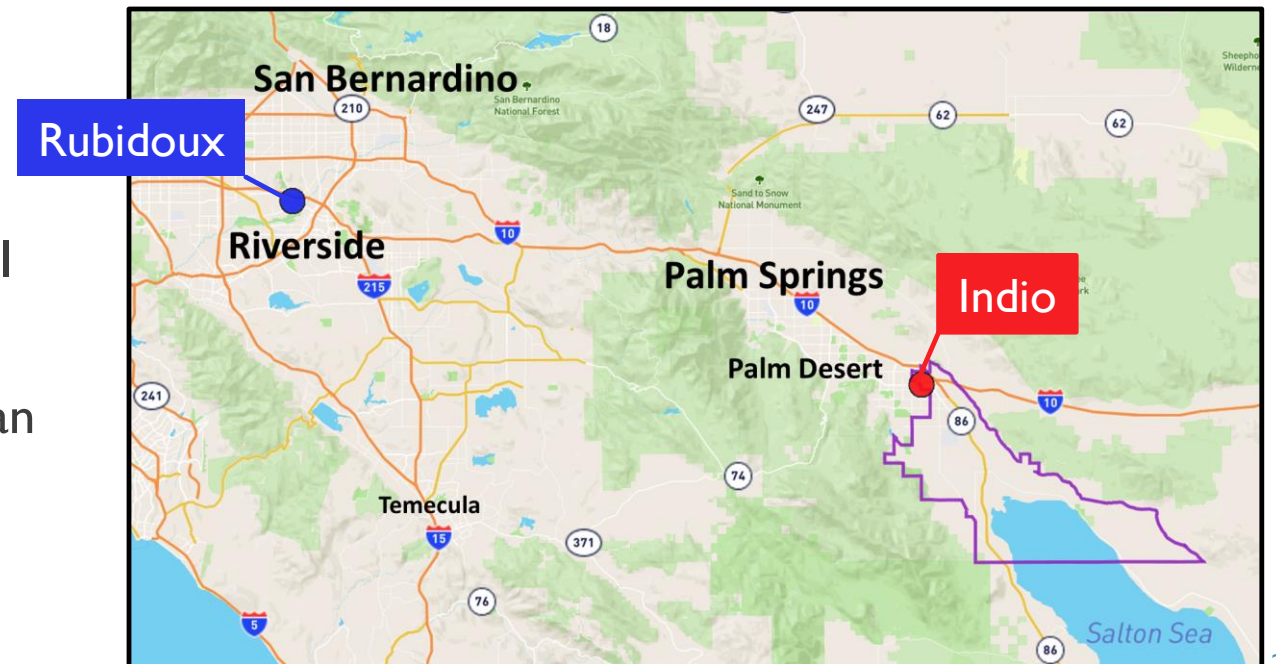
Biomass Burning

- Air monitoring for special circumstances – Frost Prevention Burning

MULTIPLE AIR TOXICS EXPOSURE STUDY MICROSCALE STUDY

Purpose: to determine if some of the target communities show higher levels of air toxics (**DPM** and **VOCs**) compared with those of the fixed sites

- A comprehensive list of air toxic pollutants were measured at **Indio Air Monitoring Station** (February 2005 to June 2005)
- Levels were compared with one of MATES III fixed stations in **Rubidoux**
- All air toxics levels were similar or lower than those in **Rubidoux**, with the exception of Manganese
 - Manganese may reflect contributions from geologic sources and its levels are generally higher in the eastern portion of the District



CURRENT SOUTH COAST AQMD FIXED AIR MONITORING IN ECV

Indio

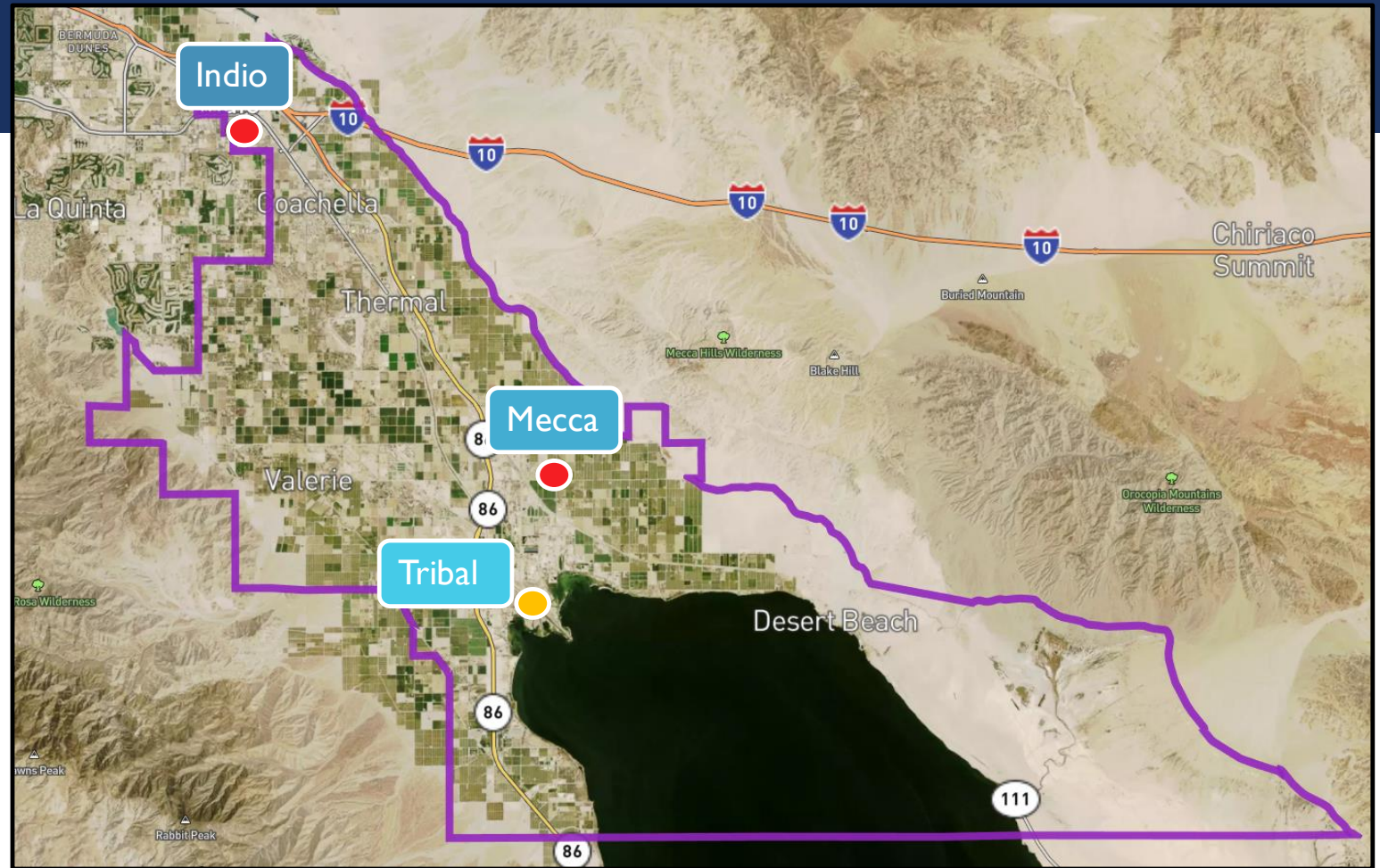
- Ozone
- Fine Particulate Matter (PM_{2.5})
- Coarse Particulate Matter (PM₁₀)
- Wind

Mecca

- Coarse Particulate Matter (PM₁₀)
- Hydrogen Sulfide (H₂S)
- Wind

Tribal

- Hydrogen Sulfide (H₂S)



- South Coast AQMD Air Monitoring Station
- Imperial Irrigation District Air Monitoring Station
- ▭ Proposed ECV Community Boundary

ADDITIONAL AIR MONITORING

Fugitive Dust

- Measured PM_{10} at **Desert Mirage High School** to address concerns about fugitive dust (2007)

Smoke

- Measured $PM_{2.5}$ at **Oasis Elementary School** in response to concerns about smoke from agricultural frost prevention burning (2012 – 2013)
- Measured $PM_{2.5}$ at **Desert Mirage High School** in response to fires in Mecca area (2015, 2017, 2019)

Odors

- Measured H_2S at **College of the Desert, Mecca Elementary School, Saul Martinez Elementary School, and South Coast AQMD Indio Air Monitoring Station** in response to odors (2010)
- **Mecca Community Monitoring Station** established in February 2011

AB 617 COMMUNITY AIR MONITORING EXAMPLES

Goal: Develop a Community Air Monitoring Plan (CAMP) and appropriate monitoring strategies based on selected air quality priorities

Purpose: CAMP to support Community Emission Reduction Plan (CERP) development and implementation



**Mobile
Monitoring**



**Fixed
Monitoring**



**Low-Cost
Sensors &
Sensor
Networks**

Learn more about our air monitoring capabilities and resources in the **Community Air Monitoring Workshop** at the next CSC Meeting in March

ADDITIONAL EXAMPLES TO ADDRESS AIR QUALITY PRIORITIES

Truck Traffic

Action 1: *Reduce emissions from truck idling*

- Provide focused enforcement for idling trucks in the community
- Provide outreach on how to file a complaint for illegal truck idling
- Install “No idling” signage

Action 2: *Reduce emissions from heavy-duty trucks*

- Continue developing regulations to reduce emissions from trucks (CARB and South Coast AQMD)
- Identify incentive opportunities for cleaner trucks
- Work with local cities and county to establish designated truck routes

Schools

Action 1: *Reduce exposure to harmful air pollutants through public outreach to schools*

- Provide air quality programs to schools
- Provide outreach to schools for asthma programs

Action 2: *Reduce exposure to harmful pollutants at schools*

- Install air filtration systems at schools prioritized by the CSC

*These are examples of potential actions to address these air quality priorities

COMMUNITY AIR QUALITY PRIORITY ACTIVITY

What is the purpose this activity?

- To identify air quality priorities for ECV

How will this information be used?

- To help the CSC develop ways to reduce air pollution and exposure to air pollution in ECV

CSC Activity

- Join a table with new faces for discussion
- Discuss the group's **top 3** air quality priorities
- Select a speaker to share the group's top 3 air quality priorities with the entire CSC



Please take turns listening to everyone's input.

THANK YOU!

AB 617 web page:
www.aqmd.gov/ab617

Community Liaison:

Arlene Farol
909.396.2250

afarol@aqmd.gov

Language ▾ F.I.N.D. ▾ About ▾ Contact Grants & Bids ▾ Online Services ▾ I'm Looking For ▾ Sign Up ▾ Search

AIR QUALITY RULES & COMPLIANCE INCENTIVES & PROGRAMS PERMITS NEWS, WEBCASTS, & CALENDAR TECHNOLOGY ADVANCEMENT RESOURCES MEETING AGENDAS & MINUTES

South Coast AQMD

Share: [f](#) [t](#)

[Home](#) / [About](#) / [Initiatives](#) / [Community Efforts](#) / [Environmental Justice](#) / [AB 617](#)

AB 617 Community Air Initiatives

AB 617

- AB 617 Community Air Monitoring
- Community Identification & Prioritization
- Wilmington/West Long Beach/Carson
- San Bernardino/Muscoy
- Boyle Heights/East Los Angeles/West Commerce
- Eastern Coachella Valley**
- Southeast Los Angeles
- Technical Advisory Group

The South Coast Air Quality Management District is conducting extensive community-based efforts that focus on improving air quality and public health in environmental justice communities.

Filter: Sort by Date:

Upcoming Events

● Meeting
02/20/2020 AT 5:30 PM 📅
AB 617 Community Meeting; February 20, 2020

Attendees will have an opportunity to hear about a new program to improve air quality in this community. Information will be provided about how to participate as a member of the Community

LOCATION:
Coachella Meeting Rooms
(adjacent to Coachella Library),
1500 Sixth Street, Coachella, CA
92236