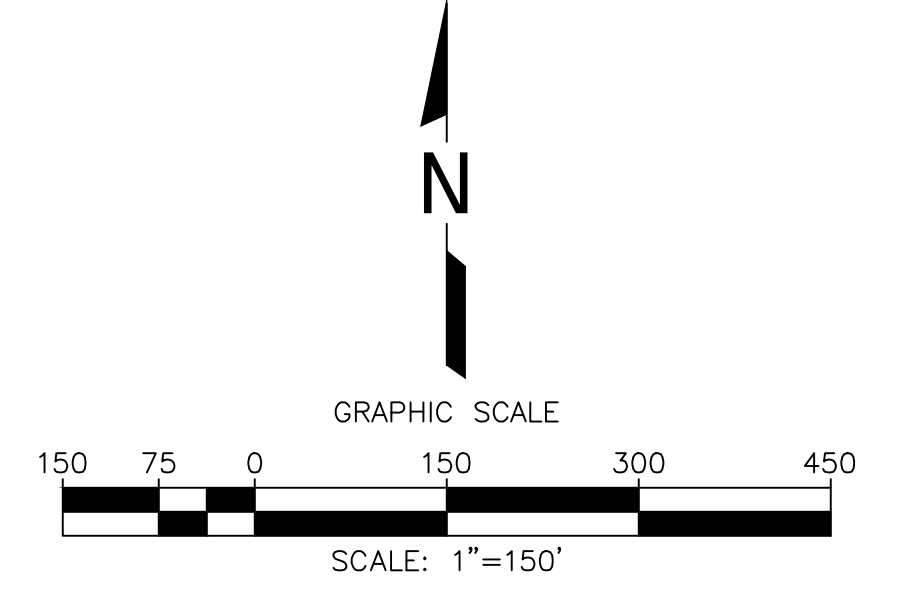


GENERAL DRAWING NOTES:

- EXISTING TOPOGRAPHIC SURVEY INFORMATION SHOWN WAS PROVIDED BY PROPELLOR. AERIAL PHOTOGRAPHY DATED APRIL 08, 2026.
- NORTH ARROW SHOWN HERE IS REFERENCE TO THE CALIFORNIA STATE PLANE ZONE V COORDINATE SYSTEM, NAD 83.
- THE LOCATION OF ANY EXISTING GCCS COMPONENTS AND OTHER FEATURES ARE APPROXIMATE AND SHOULD BE USED FOR INFORMATION PURPOSES ONLY.

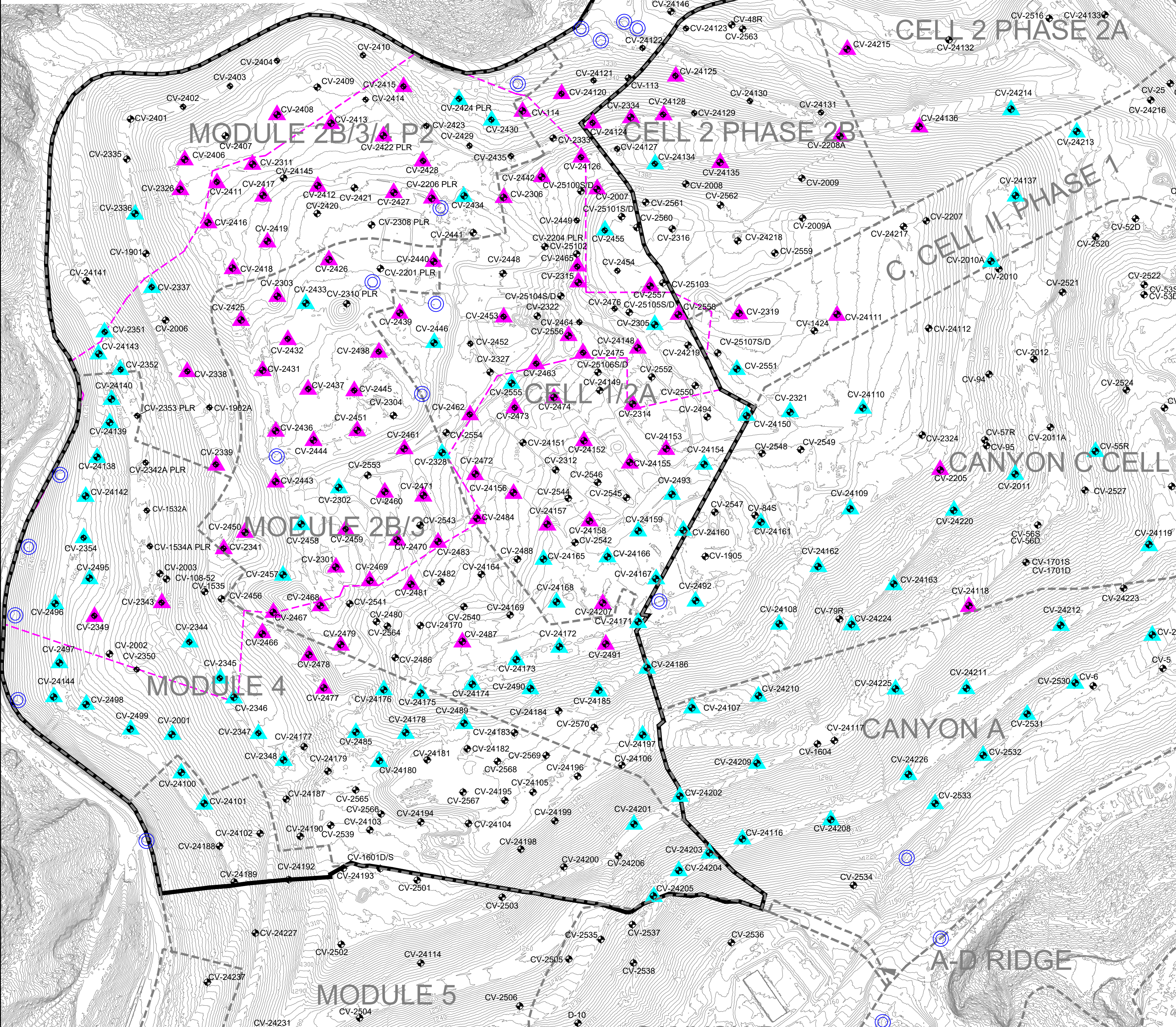
#	Well I.D.	Operational Startup Date
1	CV-2337	4/22/2024
2	CV-2302	4/26/2024
3	CV-2328	4/26/2024
4	CV-2336	4/30/2024
5	CV-24142	5/3/2024
6	CV-24144	5/13/2024
7	CV-2496	5/30/2024
8	CV-2497	5/30/2024
9	CV-24109	7/3/2024
10	CV-24162	7/7/2024
11	CV-24101	7/8/2024
12	CV-24100	7/17/2024
13	CV-2498	7/18/2024
14	CV-2348	7/22/2024
15	CV-2347	7/24/2024
16	CV-2346	7/25/2024
17	CV-2345	7/27/2024
18	CV-2344	7/30/2024
19	CV-24108	9/4/2024
20	CV-24210	9/10/2024
21	CV-24212	1/10/2025
22	CV-2001	1/23/2025
23	CV-24202	2/20/2025
24	CV-24209	2/28/2025
25	CV-24197	3/11/2025
26	CV-24166	4/7/2025
27	CV-24168	4/7/2025
28	CV-24171	4/7/2025
29	CV-24165	4/7/2025
30	CV-24134	4/9/2025
31	CV-24173	4/15/2025
32	CV-24174	4/15/2025
33	CV-24175	4/15/2025
34	CV-24159	4/16/2025
35	CV-24154	4/17/2025
36	CV-24214	5/2/2025
37	CV-2354	5/6/2025
38	CV-2493	5/6/2025
39	CV-24160	5/6/2025
40	CV-2492	5/7/2025
41	CV-24161	5/8/2025
42	CV-24224	5/12/2025
43	CV-24119	5/14/2025
44	CV-24107	5/15/2025
45	CV-24211	5/15/2025
46	CV-24137	5/15/2025
47	CV-24208	5/16/2025
48	CV-24116	5/20/2025
49	CV-24204	5/20/2025
50	CV-24205	5/20/2025
51	CV-2490	6/5/2025
52	CV-24203	6/5/2025
53	CV-24225	6/9/2025
54	CV-24186	6/10/2025
55	CV-24222	6/10/2025
56	CV-24163	6/11/2025
57	CV-24143	6/12/2025
58	CV-24139	6/12/2025
59	CV-24140	6/14/2025
60	CV-24220	6/16/2025
61	CV-55R	6/23/2025
62	CV-24213	7/9/2025
63	CV-24150	7/9/2025
64	CV-24110	7/17/2025
65	CV-2485	8/7/2025
66	CV-24180	8/15/2025
67	CV-2489	9/4/2025
68	CV-2530	10/3/2025
69	CV-2533	10/3/2025
70	CV-2532	10/17/2025
71	CV-2529	10/18/2025
72	CV-2010A	11/24/2025
73	CV-2011A	11/24/2025
74	CV-2551	12/30/2025
75	CV-2351	1/23/2026
76	CV-24138	1/23/2026
77	CV-2352	1/26/2026
78	CV-2499	1/27/2026
79	CV-2455	2/28/2026
80	CV-2495	2/28/2026
81	CV-24167	3/4/2026
82	CV-24185	3/19/2026
83	CV-24201	3/26/2026
84	CV-24178	3/30/2026
85	CV-2430	3/31/2026
86	CV-2555	4/1/2026
87	CV-24226	4/2/2026
88	CV-24176	4/3/2026
89	CV-2321	4/10/2026
90	CV-2433	4/11/2026
91	CV-2446	4/11/2026
92	CV-2457	4/11/2026
93	CV-2458	4/11/2026
94	CV-2424	4/13/2026
95	CV-2434	4/14/2026
96	CV-2305	4/15/2026
97	CV-24172	4/16/2026
98	CV-2531	4/29/2026



- LEGEND**
- 1150 TOPOGRAPHIC CONTOUR
 - EXISTING CELL LIMITS (APPROXIMATE)
 - REACTION AREA BOUNDARY - CONDITION 9A
 - REACTION AREA BOUNDARY - DATA ANALYSIS
 - ⊕ CV-XX EXISTING VERTICAL LFG EXTRACTION WELL
 - ⊕ CV-XX PLR EXISTING LFG VERTICAL EXTRACTION WELL - PRESSURIZED LEACHATE RELEASE
 - ⊙ EXISTING CONDENSATE SUMP WITH PUMP
 - ▲ EXISTING DE-WATERING WELL WITH PUMP - CURRENTLY RUNNING
 - ▲ EXISTING DE-WATERING WELL WITH PUMP - INSTALLED

De-Watering Well Pumps that are Currently Installed and Not in Operation

#	Well I.D.
2	CV-2007
3	CV-2206-PLR
4	CV-2258
5	CV-2301
6	CV-2303
7	CV-2306
8	CV-2311
9	CV-2314
10	CV-2315
11	CV-2316
12	CV-2328
13	CV-2334
14	CV-2338
15	CV-2339
16	CV-2341
17	CV-2343-PLR
18	CV-2345
19	CV-2406
20	CV-2408
21	CV-2411
22	CV-2412
23	CV-2413
24	CV-2415
25	CV-2416
26	CV-2417
27	CV-2419
28	CV-2418
29	CV-2422
30	CV-2425
31	CV-2426
32	CV-2427
33	CV-2428
34	CV-2431
35	CV-2432
36	CV-2436
37	CV-2437
38	CV-2438
39	CV-2439
40	CV-2440
41	CV-2442
42	CV-2443
43	CV-2444
44	CV-2445
45	CV-2450
46	CV-2450
47	CV-2453
48	CV-2459
49	CV-2460
50	CV-2461
51	CV-2462
52	CV-2463
53	CV-2464
54	CV-2466
55	CV-2467
56	CV-2468
57	CV-2469
58	CV-2470
59	CV-2471
60	CV-2472
61	CV-2473
62	CV-2474
63	CV-2475
64	CV-2476
65	CV-2477
66	CV-2478
67	CV-2479
68	CV-2480
69	CV-2481
70	CV-2482
71	CV-2483
72	CV-2484
73	CV-2485
74	CV-2486
75	CV-2487
76	CV-2488
77	CV-2489
78	CV-2490
79	CV-2491
80	CV-2492
81	CV-2493
82	CV-2494
83	CV-2495
84	CV-2496
85	CV-2497
86	CV-2498
87	CV-2499
88	CV-2500
89	CV-2501
90	CV-2502
91	CV-2503
92	CV-2504
93	CV-2505
94	CV-2506
95	CV-2507



Zone Description	De-Watering Pumps			
	Total	Operational	Non-Operational	Pending Installation
Within Condition 9A Boundary	142	62	80	17
Outside of Condition 9A Boundary	49	36	13	3
Combined (Both Areas)	191	98	93	20
Condensate Sump	50	47	3	12

DATE:	
REVISION:	
NO.:	
SHEET TITLE:	EXISTING DE-WATERING WELL WITH PUMP MAP
PROJECT TITLE:	CHIQUITA CANYON LANDFILL CASTAIC, CALIFORNIA
CLIENT:	CHIQUITA CANYON LANDFILL CASTAIC, CALIFORNIA
ACAD FILE:	N:\CAD\ASBUILT-MASTERS
APP. BY:	
DRN. BY:	AEK
CHK. BY:	
DATE:	05/08/2026
SCALE:	AS SHOWN
SHEET:	1

N:\CAD\ASBUILT - MASTERS\CHIQUITA\GCCS\2026 ACAD\2026 CCL Existing De-Watering Well with Pump Map_2026-05-08.dwg May 08, 2026 - 10:24am By: smelino