

Solid Waste Borehole Maximum
Temperature Profiles Over 6 Weeks
for 4/2/2026 12:00 AM to 5/13/2026 12:00 AM

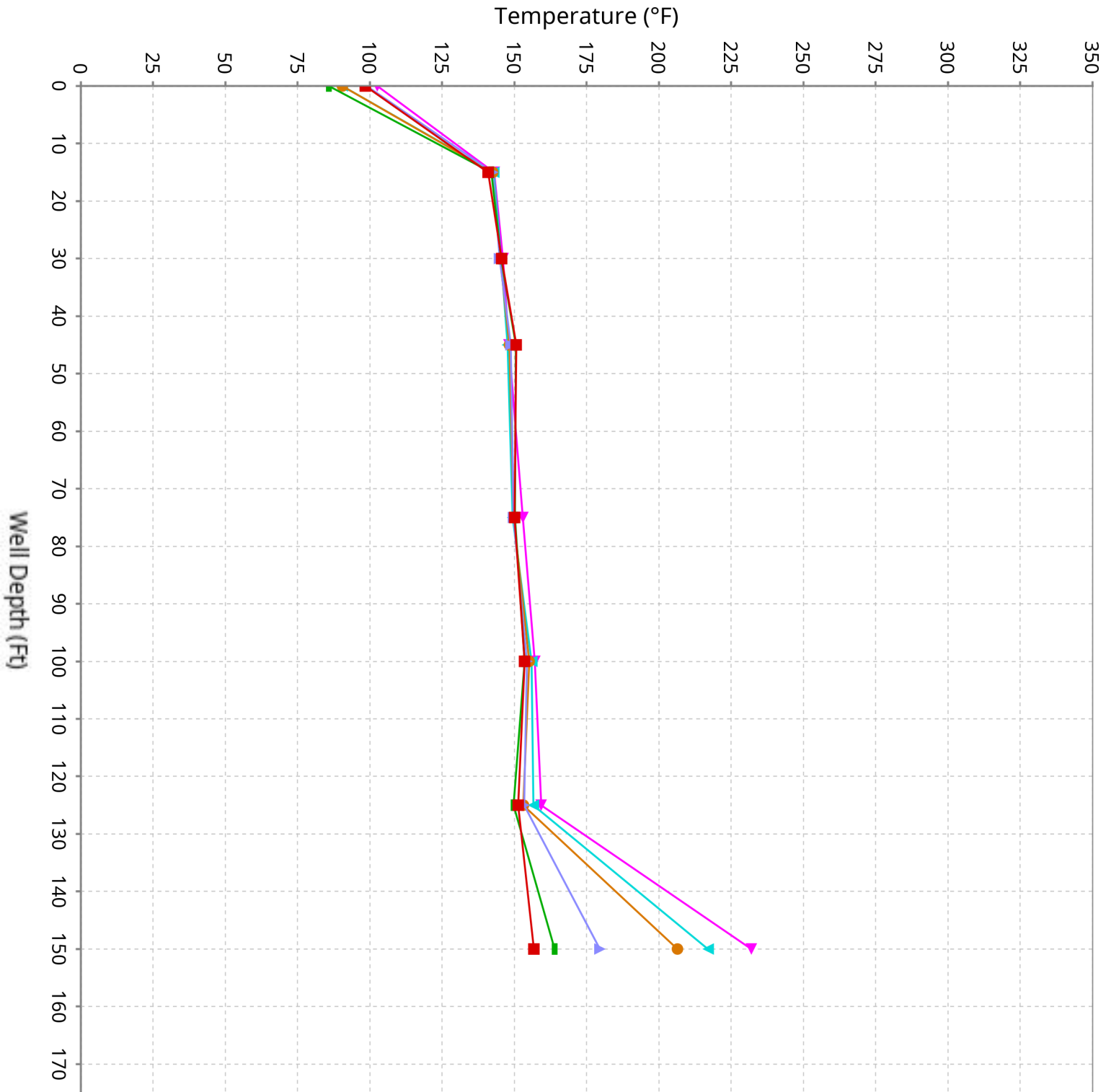
SCS ENGINEERS

07224053.00 | May 14, 2026

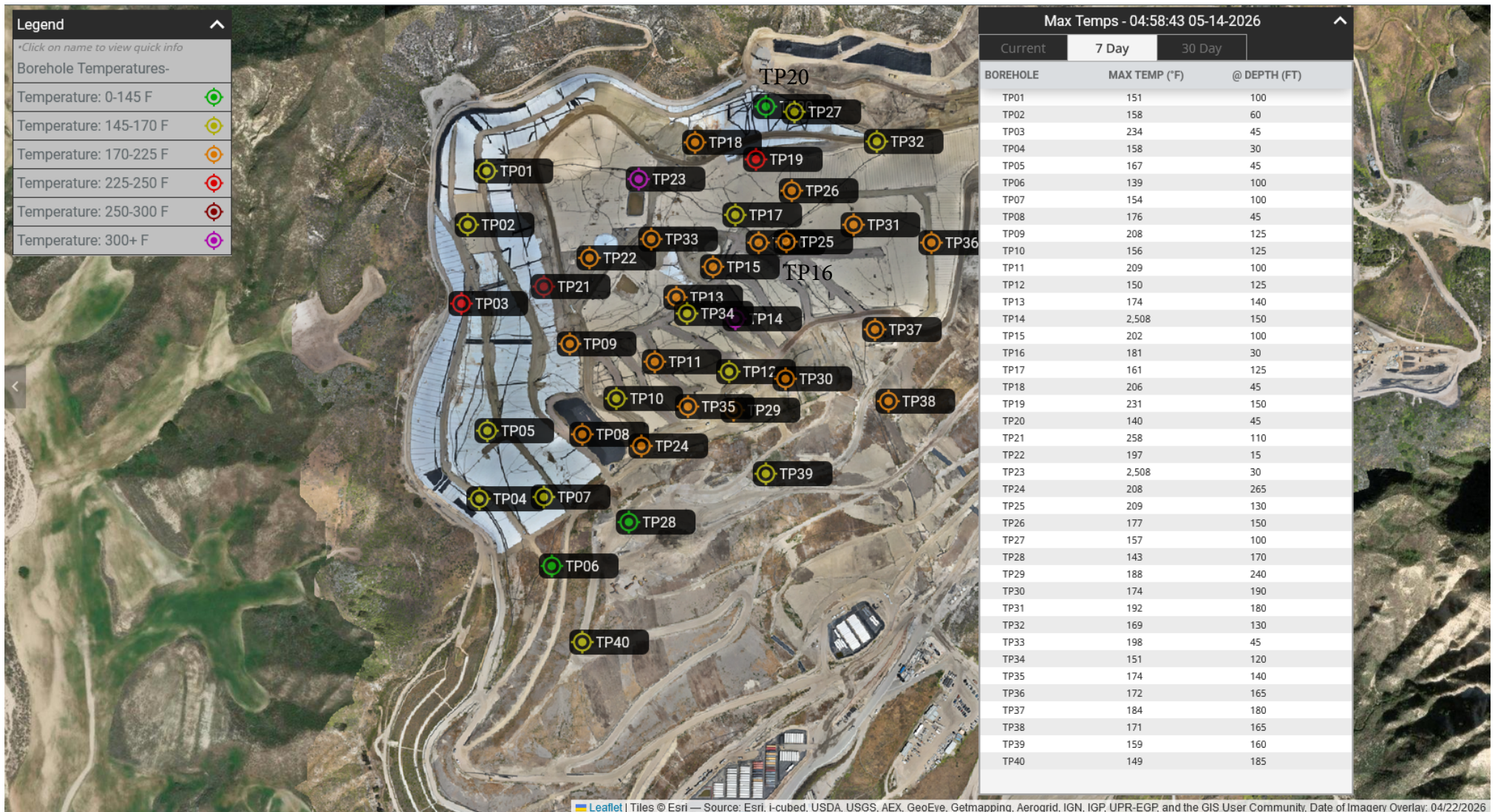
274 Granite Run Drive
Lancaster, PA 17601
717-550-6330

Vertical Temperature Profiles from Temperature Probes at Chiquita Landfill for TP-19

Maximum data for 4/2/2026 12:00 AM to 5/13/2026 12:00 AM

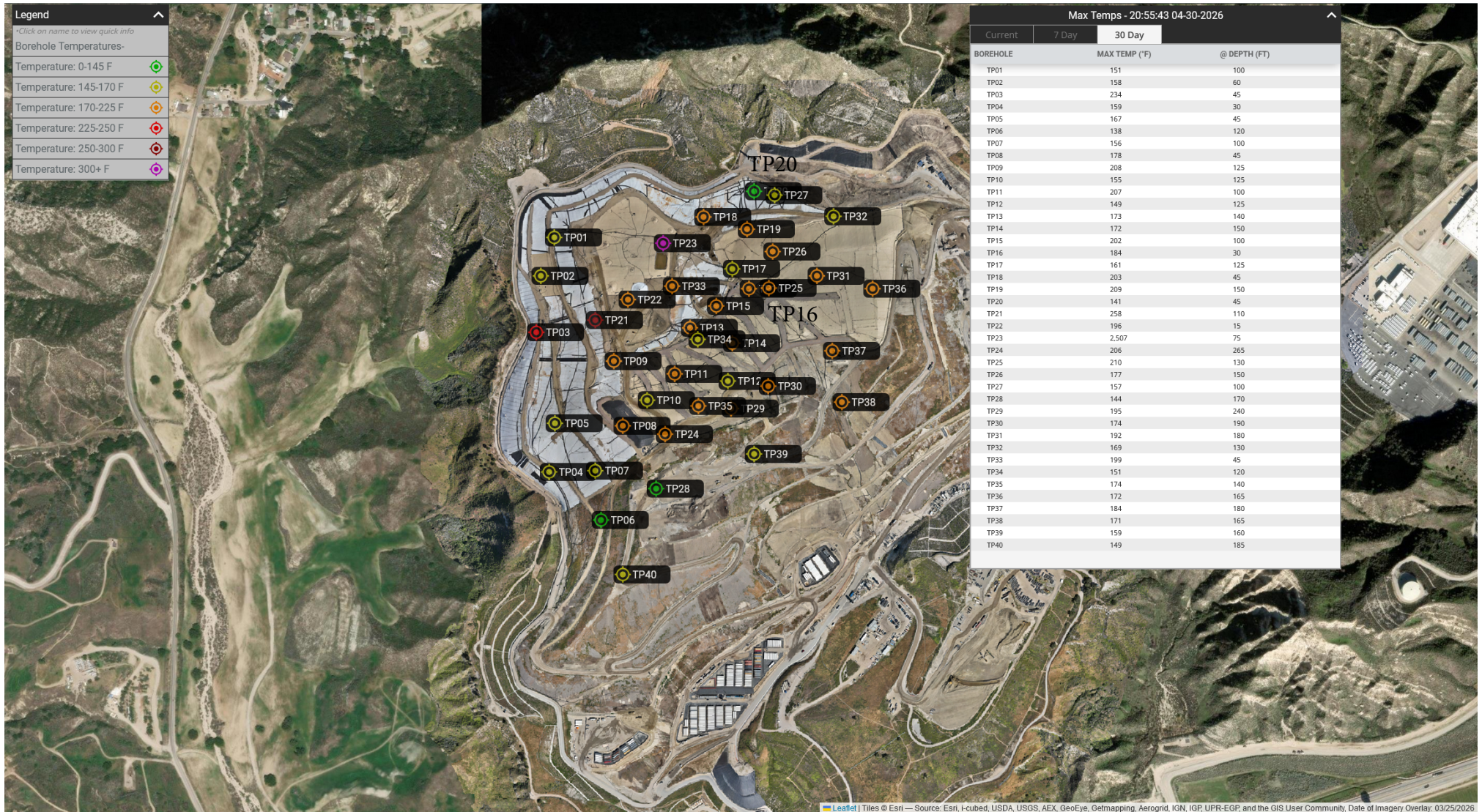


Maximum Vertical Temperature Map from Temperature Probes at Chiquita Landfill



*The reported maximum temperature reading of 2508°F for TP-14 and TP-23 is considered anomalous and is believed to be associated with a potential thermocouple sensor malfunction. The sensors remain under evaluation and investigation.

Thirty Day Maximum Vertical Temperature Map from Temperature Probes at Chiquita Canyon Landfill



*The reported maximum temperature reading of 2508°F for TP-23 is considered anomalous and is believed to be associated with a potential thermocouple sensor malfunction. The sensor remains under evaluation and investigation.