

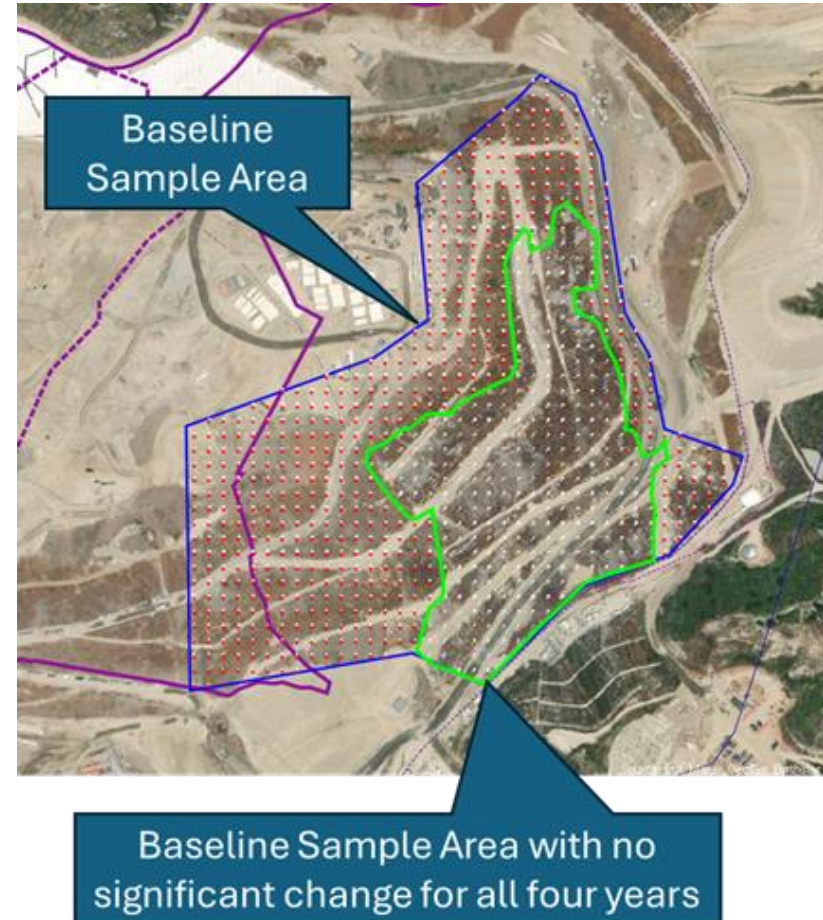


Chiquita Canyon Landfill Surface Settlement Report Findings

DECEMBER 9 AND 11, 2025

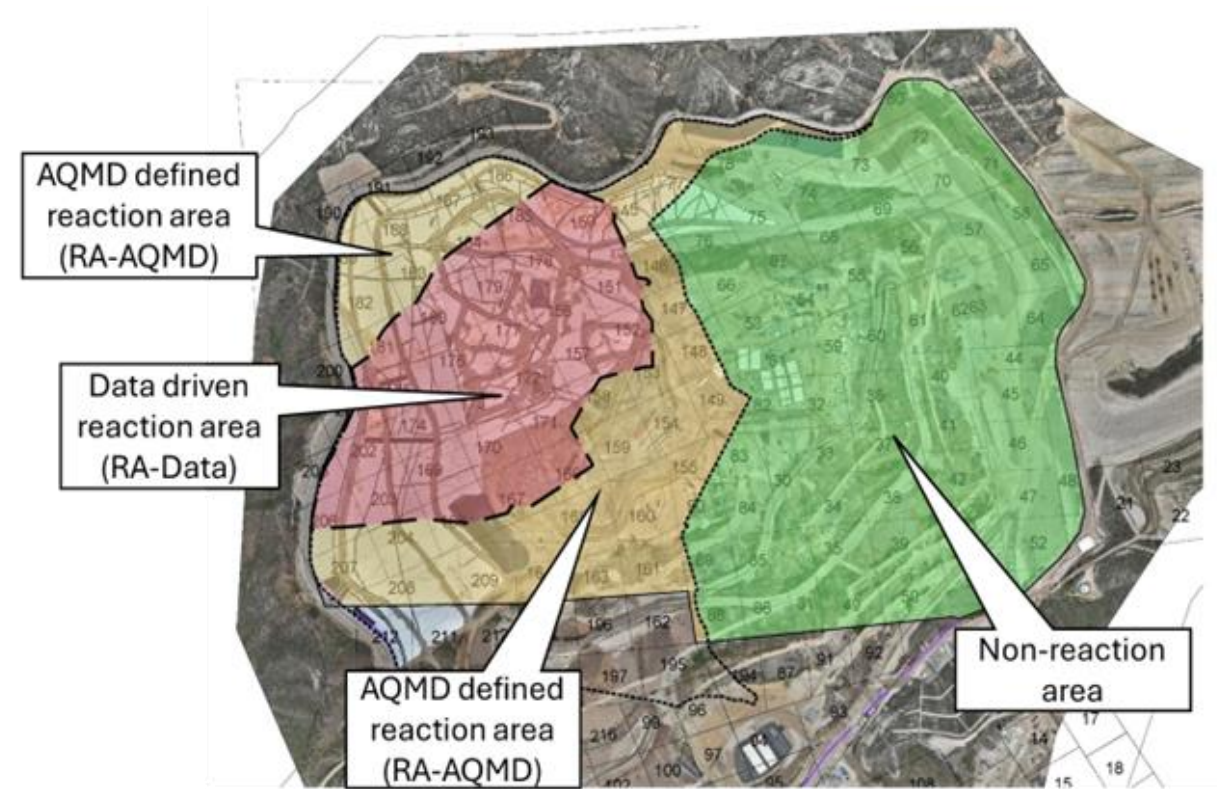
Baseline Sample Area

- Baseline sampling area was at southeast edge of the current lined area
 - Furthest distance from the reaction area
- Annual elevation data from 324 locations for four years from 2021 through 2025.
 - 1,246 data points
- Determined the annualized baseline rate of settlement to be about 2.1%



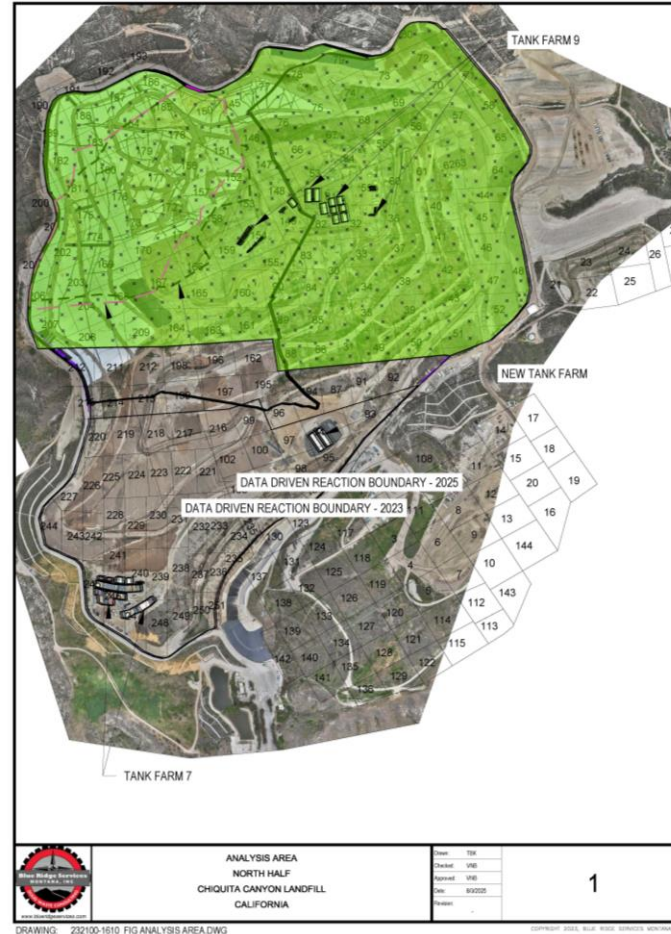
Reaction Boundaries

- Detailed analysis was done between May 18, 2023, and May 21, 2025, in the north half of the site
- Analysis focused on the currently defined reaction boundaries and the area east of them



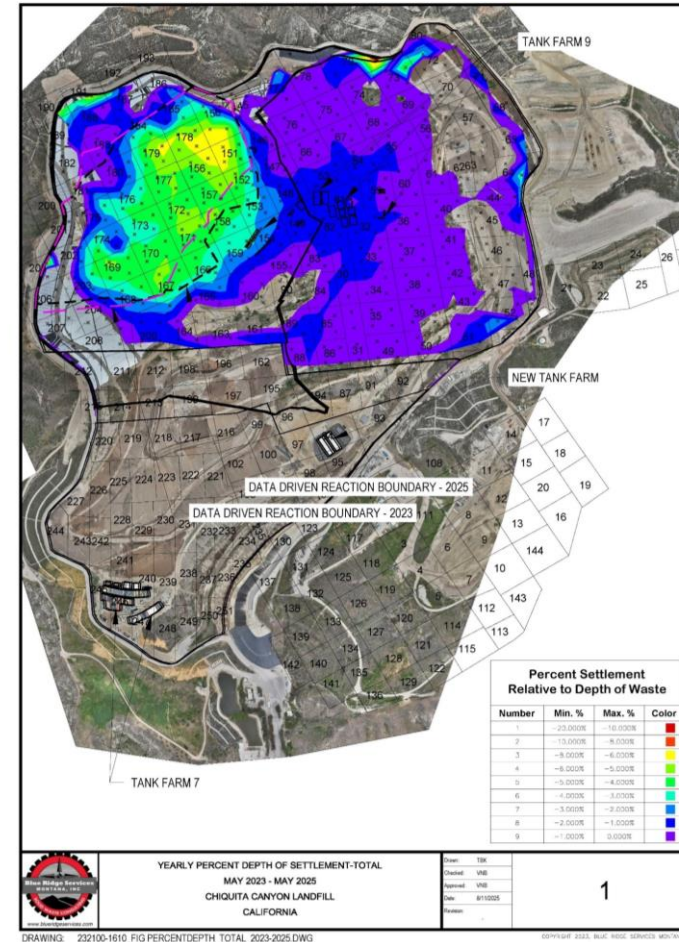
Detailed Analysis Sample Points

- Four sample locations were defined in each inspection grid within the analysis area.
 - 453 point locations
- A surface elevation for each point was pulled from each Propeller topographic surface from May 2023 through May 2025
 - 82 surfaces resulted in 37,146 elevation points



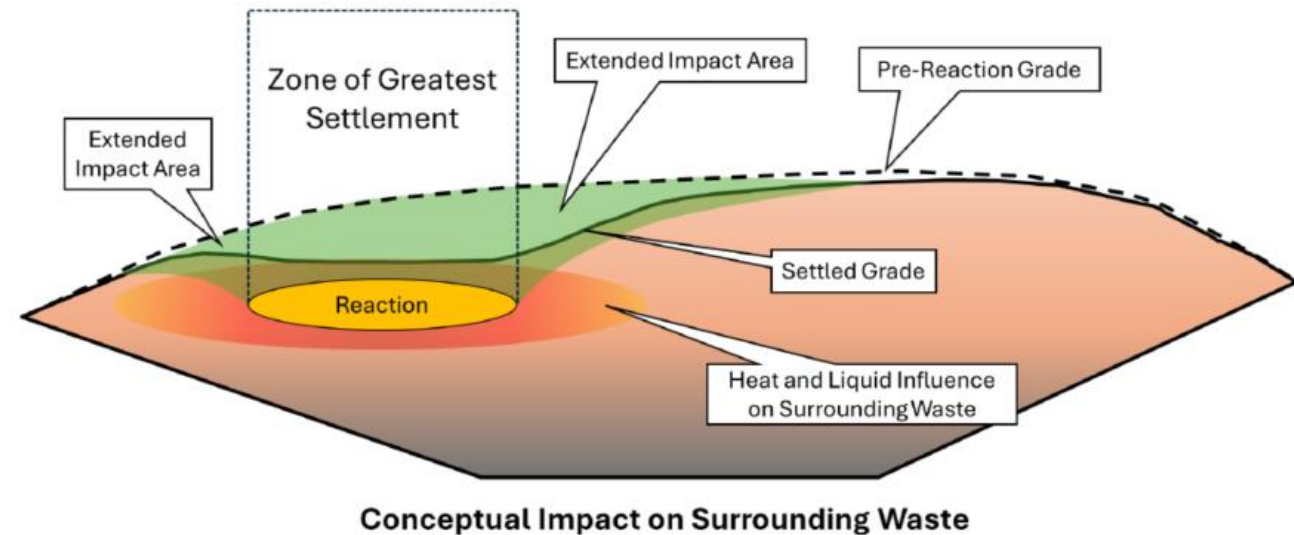
Summary of Findings

- Evaluation of settlement rate showed that the area within the data drive boundary had the highest rate with rates reducing the further out from that zone



Summary of Findings (cont.)

- Settlement rates exceed the baseline average of 2.1% annual beyond the data driven boundary due to influence of the reaction on surrounding waste mass



Summary of Findings (cont.)

- Monthly trends in settlement rate show the diminishing rate of settlement within both the data driven and AQMD defined boundary
 - The diminishing rate of settlement indicates that the reaction is slowing, rather than expanding

