



SOUTH COAST AIR QUALITY MANAGEMENT DISTRICT  
**ANNOUNCEMENTS**

[www.aqmd.gov](http://www.aqmd.gov)

@SouthCoastAQMD    

---

**FOR IMMEDIATE RELEASE:** July 16, 2023

**MEDIA CONTACT:**

Bernard Parks, (909) 396-3127, Cell: (909) 414-6309

Connie Mejia, (909) 396-3456, Cell: (909) 215-5601

[press@aqmd.gov](mailto:press@aqmd.gov)

## **South Coast AQMD Extends Smoke Advisory Due to Moreno Valley Fire**

**Valid from July 16, 2023 to July 17, 2023**

*This advisory is in effect from Sunday 9:30 a.m. through Monday 12:00 p.m. South Coast AQMD will issue an update if additional information becomes available.*

### **Current Conditions**

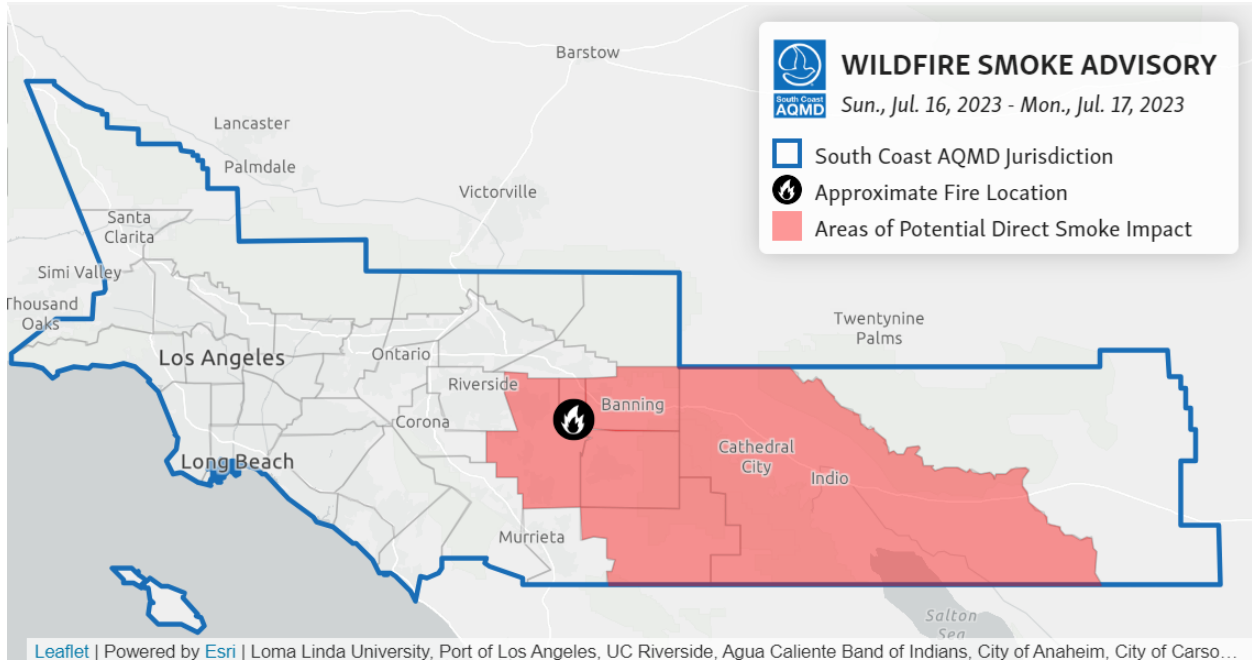
- The Rabbit Fire is currently at 7,600 acres with 10% containment as of Sunday at 9:00 AM:
- Visit the [Cal FIRE/Riverside County Fire Department Incident Summary](#) for more details
- As of Sunday at 9:00 AM, smoke production and fire growth has decreased significantly
- Any remaining smoke is being transported towards the east and southeast into Hemet, Beaumont, Banning, and the Coachella Valley

Conditions may change quickly due to fire activity and weather. Download the [South Coast AQMD app](#) or visit [www.aqmd.gov/AQImap](http://www.aqmd.gov/AQImap) to view current air quality in your neighborhood.

### **Forecasted Smoke and Air Quality Impacts**

- Hot and dry conditions will continue throughout the day on Sunday and into Monday
- Winds from the west will continue to push any remaining smoke towards the east and may result in Air Quality Index levels that are **Unhealthy for Sensitive Groups** in impacted areas
- Light and variable winds during the overnight hours may result in the highest AQI levels in areas immediately adjacent to the fires

- Note that AQI levels may reach the **Unhealthy** category in the afternoon hours from high levels of ozone (smog) due to the current heat wave and are largely unrelated to the fires. See [South Coast AQMD Ozone Advisory](#).



**Detailed Forecast**

<p>Sunday</p>	<p>Winds from the west will continue to push smoke towards the east, potentially affecting neighborhoods in the Hemet area, Idyllwild, San Gorgonio Pass and Coachella Valley. Ozone (smog) levels will also be elevated due to the heat wave affecting the region.</p>
<p>Sunday Evening and Early Monday Morning</p>	<p>If the fire continues to produce smoke, light and variable winds may lead to increased smoke concentrations in areas immediate adjacent to the fires</p>
<p>Monday</p>	<p>If the fire is still producing smoke, winds from the west will continue to push smoke to the east. Ozone (smog) levels will also be elevated in the afternoon hours.</p>

**If you are in an area impacted by smoke:**

- Limit your exposure by remaining indoors with windows and doors closed or seeking alternate shelter.
- Avoid vigorous physical activity.
- Run your air conditioning and/or an air purifier. If possible, do **not** use swamp coolers or whole house fans that bring in outside air.
- Avoid burning wood in your fireplace or firepit and minimize sources of indoor air pollution such as candles, incense, pan-frying, and grilling.
- If you must be outside, a properly fit N95 or P100 respirator may provide some protection.

For more information, visit [www.aqmd.gov/smokesafety](http://www.aqmd.gov/smokesafety).

South Coast AQMD is the regulatory agency responsible for improving air quality for large areas of Los Angeles, Orange, Riverside and San Bernardino counties, including the Coachella Valley. For news, air quality alerts, event updates and more, please visit us at [www.aqmd.gov](http://www.aqmd.gov), download our award-winning app, or follow us on [Facebook](#), [Twitter](#) and [Instagram](#).

###