



# SOUTH COAST AIR QUALITY MANAGEMENT DISTRICT ANNOUNCEMENTS

www.aqmd.gov

@SouthCoastAQMD    

**FOR IMMEDIATE RELEASE:** June 16, 2026

**MEDIA CONTACT:**

Nahal Mogharabi, (909) 396-3773, Cell: (909) 837-2431

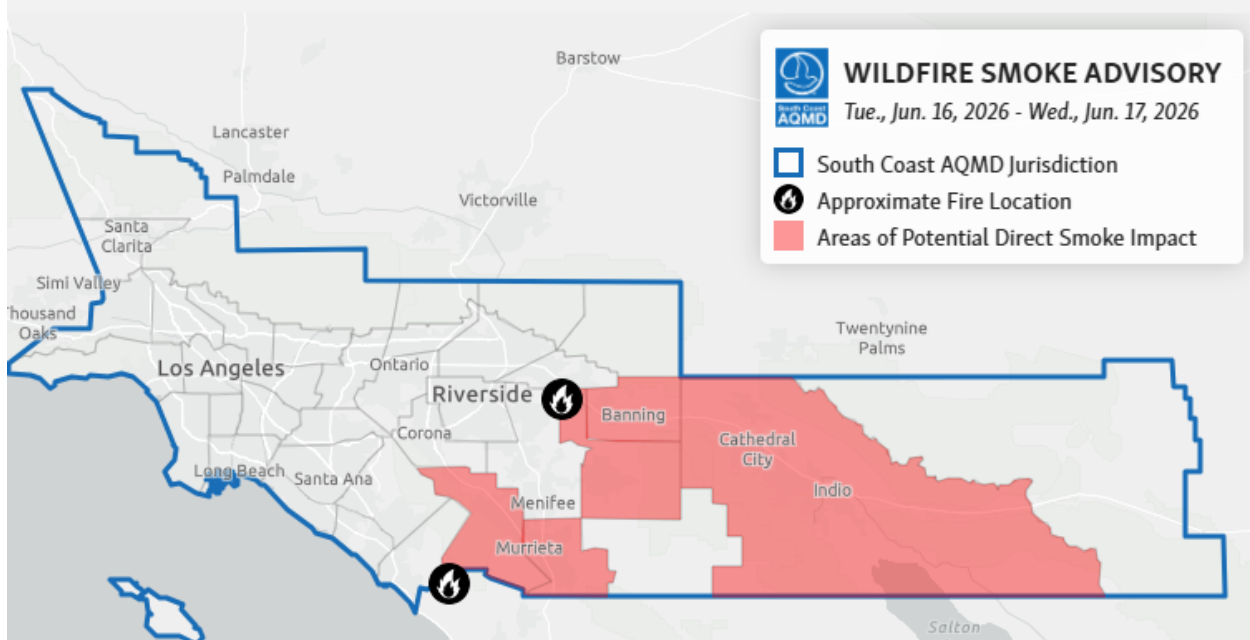
Lisette Guzman, (909) 396-2788, Cell: (840) 240-9598

[press@aqmd.gov](mailto:press@aqmd.gov)

## South Coast AQMD Extends Wildfire Smoke Advisory

*Valid until Wednesday at 5:00 PM*

**Valid Tuesday 3:00 PM until Wednesday 5:00 PM**



### Current conditions

- The [Shore Fire](#) has burned 2,600 acres in Riverside County and is 25% contained as of 2:00 PM on June 16, 2026.
- The [Mateo Fire](#) has burned 989 acres in San Diego County and is 10% contained.
- Based on satellite and webcam imagery, the fires are actively producing smoke as of Tuesday afternoon. Winds are pushing smoke from the Shore Fire towards San Geronimo Pass and the Coachella Valley and pushing smoke from the Mateo Fire towards Lake Elsinore and Temecula.

- Regulatory monitors and sensors show that PM2.5 levels reached **Unhealthy for Sensitive Groups to Unhealthy** Air Quality Index (AQI) categories since Monday evening in the areas of San Gorgonio Pass and the Coachella Valley and remained in the **Moderate** category in the areas of Lake Elsinore and Temecula.

Conditions may change quickly due to fire activity and weather. Download the [South Coast AQMD app](#) or visit [www.aqmd.gov/AQImap](http://www.aqmd.gov/AQImap) to view current air quality in your neighborhood.

**Forecasted Smoke and Air Quality Impacts**

- On Tuesday night, smoke from the Shore Fire is expected to continue to impact the areas of San Gorgonio Pass and the Coachella Valley. Smoke from the Mateo Fire is expected to mainly influence Lake Elsinore and Temecula.
- AQI due to PM2.5 may reach the Unhealthy for Sensitive Groups category or higher in these areas.
- Smoke impacts will depend on fire activity and containment efforts.
- In addition to wildfire smoke, northwesterly winds gusting to 40 mph are also expected to contribute to high levels of windblown dust with PM10 in the Unhealthy for Sensitive Groups AQI category or higher, through Wednesday morning in the Coachella Valley.

**Detailed Forecast**

Tuesday afternoon	AQI is expected to remain at <b>Moderate</b> levels in the affected areas due to better air circulation in the daytime.
Tuesday nighttime	For both fires smoke will stay close to the ground at night. AQI may increase to <b>Unhealthy for Sensitive Groups</b> or higher in these areas. Strong northwesterly winds may also contribute to high levels of dust in the Coachella Valley. PM10 due to dust may also reach the <b>Unhealthy for Sensitive Groups</b> AQI category or higher during the nighttime.
Wednesday daytime	Due to decreasing wind speed and improved air circulation, AQI is expected to improve between <b>Good</b> and <b>Moderate</b> in the daytime.

**If you are in an area impacted by smoke:**

- Limit your exposure by remaining indoors with windows and doors closed or seeking alternate shelter.
- Avoid vigorous physical activity.
- Run your air conditioning and/or an air purifier. If possible, do not use swamp coolers or whole house fans that bring in outside air.

- Avoid burning wood in your fireplace or firepit and minimize sources of indoor air pollution such as candles, incense, pan-frying, and grilling.
- If you must be outside, a properly fit N95 or P100 respirator may provide some protection.

For more information, visit [www.aqmd.gov/smokesafety](http://www.aqmd.gov/smokesafety).

South Coast AQMD is the regulatory agency responsible for improving air quality for large areas of Los Angeles, Orange, Riverside and San Bernardino counties, including the Coachella Valley. For news, air quality alerts, event updates and more, please visit us at [www.aqmd.gov](http://www.aqmd.gov), download our award-winning app, or follow us on [Facebook](#), [X](#) (formerly known as Twitter) and [Instagram](#).

###